

Name

Surface Level

Designer

Suzanne Tick

Style No.

2011

Collection

Unified Field

Use

Upholstery
Wrapped Wall
Panel
Screens

Content

53% Recycled Polyester,
47% Olefin

Abrasion

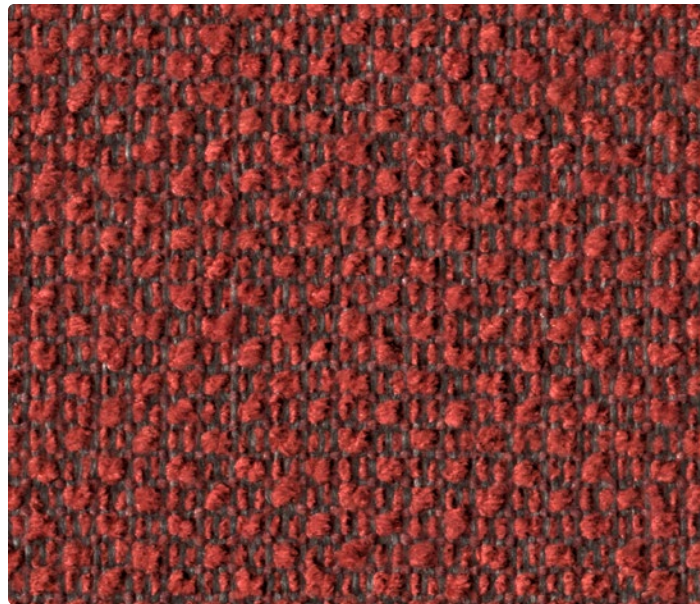
Wyzenbeek
50,000 double rubs

Special Characteristics

Bleach Cleanable

Environmental

Recycled Content
Chemical Finish Free
Heavy Metal Free
REACH Regulation
Compliant



Cherrybark 2011-07



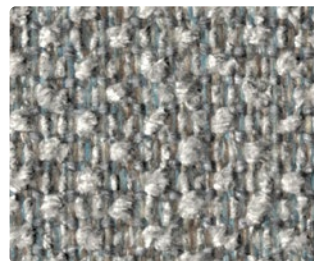
Rock Salt 2011-04



Whey 2011-03



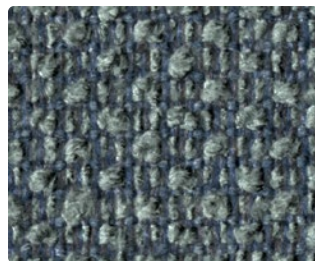
Water Mint 2011-09



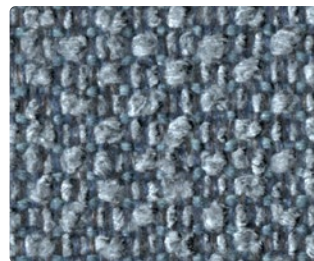
Flannel 2011-02



Raffia 2011-05



Green Earth 2011-08



Ice Sheet 2011-11



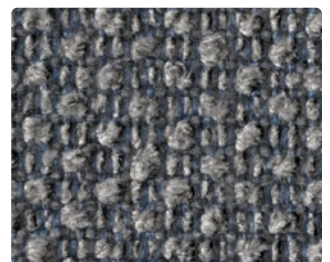
Seedpod 2011-06



Kelp 2011-10



Liquid 2011-12



Ore 2011-01

Name

Surface Level

Style No.

2011

Designer

Suzanne Tick

Specification

Use: Upholstery/Wrapped Wall/Panel/Screens
Content: 53% Post Consumer Recycled Polyester, 47% Olefin
Weight: 16.93 oz per linear yard
Width: 55" +/- 1"
Pattern Repeat: None
Directional: No

Finish

Acrylic Backing

Performance

Abrasion: ASTM D4157 Wyzenbeek 50,000 double rubs
Breaking Strength: ASTM D5034 Warp 460 lbf, Fill 323 lbf
Seam Slippage: ASTM D4034 Warp 44 lbf, Fill 84 lbf
Colorfastness to Light: AATCC 16, Grade 4 at 40 Hours
Colorfastness to Crocking: AATCC 8, Wet Class 4-5, Dry Class 5
Pilling: ASTM D3511 (Brush Pill), Class 3

Acoustical Rating

ISO 10534-2, Fabric Transparency 0.70

Flame Retardancy

Cal TB 117-2013, UFAC Class 1, NFPA 260
ASTM E84 Unadhered Class A or 1
CAN/ULC 102: 2019 (R2024)

Maintenance

WS, Clean with either a water-based or solvent-based cleaning agent.
Bleach Cleanable: 9% (10:1 Ratio), wipe with water after solution

Environmental

Recycled Content
Chemical Finish Free
Heavy Metal Free
REACH Regulation Compliant

Origin

USA

Dye lots may vary slightly from samples shown. Samples shown off the bolt. Irregular yarn slubs and variations in color are characteristic of this product and not considered defects.



Canada

877.705.LUUM
luumtextiles.ca

USA

877.705.LUUM
luumtextiles.com

International

919.464.2922
luumtextiles.com

cdn/us/int/05-25

© Luum™ 2025, all rights reserved.
*,™ Trademarks used under license by Luum™, Surface Level™
*Certification Marks owned by the Association for Contract Textiles, Inc.
Abrasion test results exceeding ACT Performance Guidelines are not an indicator of product lifespan.
Multiple factors affect fabric durability and appearance retention.

U8-SC-305-2011