

Name

Afterimage

Designer

Suzanne Tick

Style No.

6003

Collection

Twist on a Classic

Use

Drapery

Content

71% Polyester

29% Wool

Environmental

Renewable Content

Oeko-Tex 100 Certified

REACH Regulation Compliant

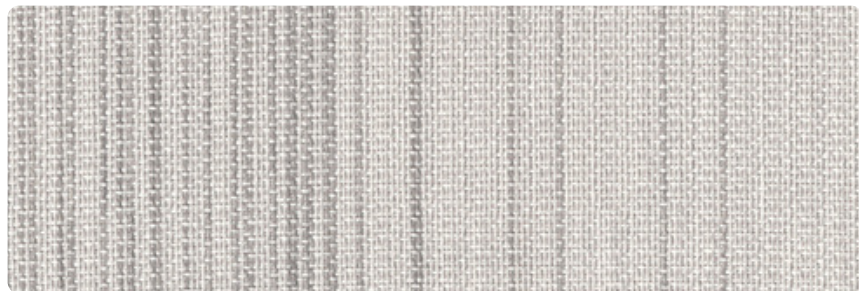
Samples shown railroaded



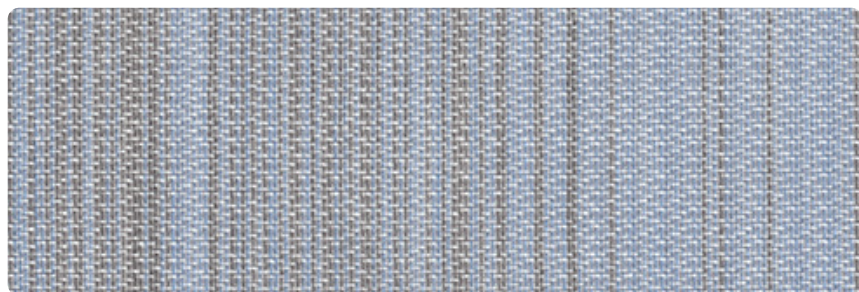
Solar Noon
6003-02



Midmorn
6003-03



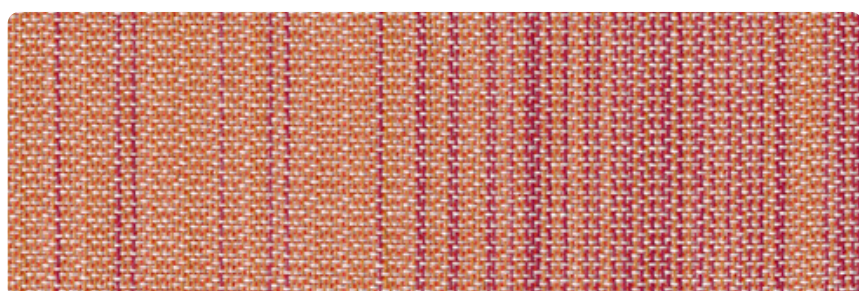
Winter Fog
6003-04



Dusk
6003-05



Marine Layer
6003-06



Alpenglow
6003-01

LUUM

Name **Afterimage**

Style No. **6003**

Designer Suzanne Tick

Specification
Use: Drapery
Content: 71% Polyester, 29% Wool
Weight: 16.77 oz per linear yard
Width: 126"
Pattern Repeat: Vertical: 29"
Railroaded Repeat Horizontal: 29"
Directional: Yes

Finish None

Performance
Colorfastness to Light: AATCC 16, Grade 5 at 60 Hours
Colorfastness to Crocking: AATCC 8, Wet Class 5, Dry Class 5

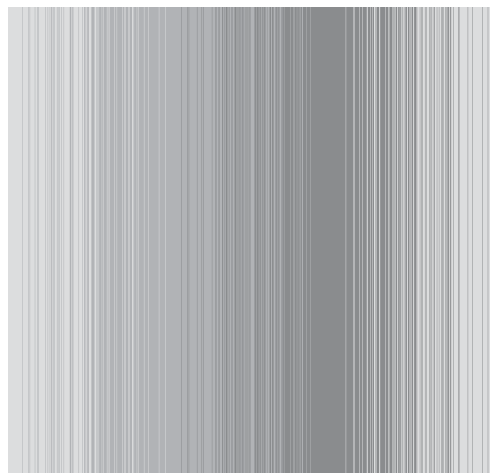
Acoustical Rating NRC 0.15 draped flat, NRC 0.20 draped at 100% fullness tested to ASTM C423 standards

Flame Retardancy NFPA 701, CAN/ULC S109

Maintenance WS, Clean with either a water-based or solvent-based cleaning agent.

Environmental
Renewable Content
Oeko-Tex 100 Certified
REACH Regulation Compliant

Origin Italy
Dye lots may vary slightly from samples shown.
Samples Shown Railroaded



Graphic shows on full repeat - Railroaded

————— 29" —————

Canada
877.705.LUUM
luumtextiles.ca

USA
877.705.LUUM
luumtextiles.com

International
919.464.2922
luumtextiles.com

cdn/us/int/05-24

© Luum™ 2024, all rights reserved.

*™ Trademarks used under license by Luum™, Afterimage™

*Certification Marks owned by the Association for Contract Textiles, Inc.

SC-305-6003