

LUUM

Collection

Organized Complexity

Designer

Suzanne Tick

Products

Focal Point

Intraweb

Juxtapose

Limitless Loop

Milieu

Touch Tone



Organized Complexity

by Luum

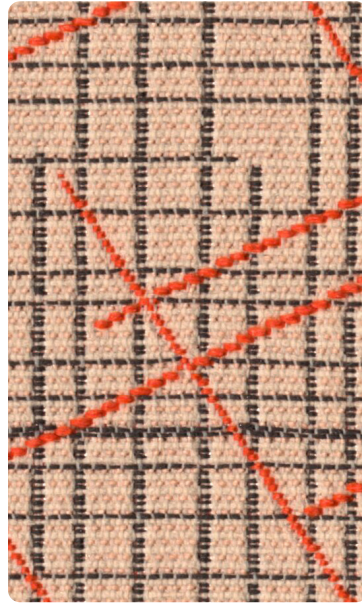
The Organized Complexity collection by Suzanne Tick features six textiles that observe how humans connect in relationship to nature's dynamism. Just as nature is always engaged in problem solving, fitting form to function and returning itself to the conditions conducive to evolution for the greater good, the ways we relate to one another can be as well - solidifying nature as our ultimate operating manual.

Organized Complexity explores how patternwork, manufacturing techniques and materiality reflect the relationship between humans and nature - revealing the ways we cohabitate, mirror and affect the natural systems around us.

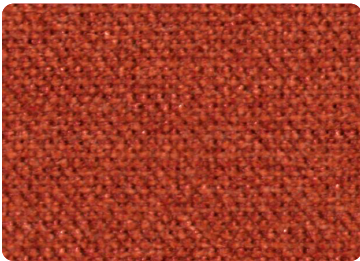
Organized Complexity Collection



Limitless Loop
Radian 4116-04



Intraweb
Superposition 2002-04



Milieu
Flamboyance 2001-18



Touch Tone
Sycamore 4117-07



Focal Point
Pyrotechnic 6002-08



Juxtapose
Timber 7020-04

Limitless Loop

Use: Upholstery/Wrapped Wall
Content: 100% Polyester Ground + 50% Polyester + 50% Nylon Stitching
Number of Colorways: 6
Abrasion: Wyzenbeek 100,000 double rubs
Special Characteristics: Chemical Finish Free, Heavy Metal Free
 ☒ ♻️ ⚡ ⭐

Intraweb

Use: Multipurpose
Content: 100% Recycled Biodegradable* Polyester (Postconsumer)
Number of Colorways: 9
Abrasion: Wyzenbeek 100,000 double rubs
Special Characteristics: Recycled Content, Chemical Finish Free, Biodegradable*, Fluorine Free Stain Repellent, Facts 3rd-party certified to NSF/ANSI 336 Gold
 ☒ ♻️ ⚡ ⭐ © facts

Milieu

Use: Multipurpose
Content: 90% Recycled Polyester (Postconsumer) + 10% Polyester
Number of Colorways: 27
Abrasion: Wyzenbeek 100,000 double rubs
Special Characteristics: Recycled Content, Fluorine Free Stain Repellent
 ☒ ♻️ ⚡ ⭐

Touch Tone

Use: Upholstery
Content: Face: 90% Polyurethane + 10% Silicone
 Back: 100% Polyester Backing
Number of Colorways: 22
Abrasion: Wyzenbeek 500,000 double rubs
Special Characteristics: Bleach Cleanable, Inherently Ink/Stain Resistant, Chemical Finish Free, PVC Free, DMF Free, Phthalate Free, Complies with California Section 01350 VOC Emission Standards
 ☒ ♻️ ⚡ ⭐

Focal Point

Use: Drapery
Content: 100% Polyester
Number of Colorways: 8
Special Characteristics: Chemical Finish Free, Heavy Metal Free, Clean Air Gold Certified
 ♻️ ⚡ ⭐

Juxtapose

Use: Direct Glue/Wrapped Wall
Content: 70% Recycled Polyester (Postconsumer) + 30% Polyester
Number of Colorways: 6
Special Characteristics: Recycled Content, Heavy Metal Free, REACH Regulation Compliant, Bleach Cleanable
 ♻️ ⚡ ⭐

© Luum 2023, all rights reserved.
 *™ Trademarks used under license by Luum™.
 Limitless Loop™, Intraweb™, Milieu™, TouchTone™, Focal Point™, Juxtapose™

*Certification marks owned by the Association for Contract Textiles, Inc

*Rate and extent of biodegradation into elements found in nature is 91% after 1,278 days under ASTM D5511 (Anaerobic Biodegradation of Plastic Materials Under High Solids Anaerobic Digestion Conditions.) The test was done with the same component (PET) polyester and biocatalyst additive. No evidence of further degradation.

Abrasion test results exceeding ACT Performance Guidelines are not an indicator of product lifespan. Multiple factors affect fabric durability and appearance retention.

Dye lots may vary slightly from samples shown. All samples shown off the bolt.

Always order a memo sample for complete colorway representation.

Visit our website to learn more, order samples or find your local Luum Rep

Canada
855.835.LUUM
luumtextiles.ca

USA
855.835.LUUM
luumtextiles.com

International
416.661.3370
luumtextiles.com

cdn/us/int/09-23

SC-CC-Sept23

Limitless Loop NA, Intraweb U3-A3-P4, Milieu U3-A3-P4, Touch Tone U4, Focal Point NA, Juxtapose A4