

Name

Texture Map

Designer

Suzanne Tick

Style No.

2004

Collection

Good Vibrations Collection

Use

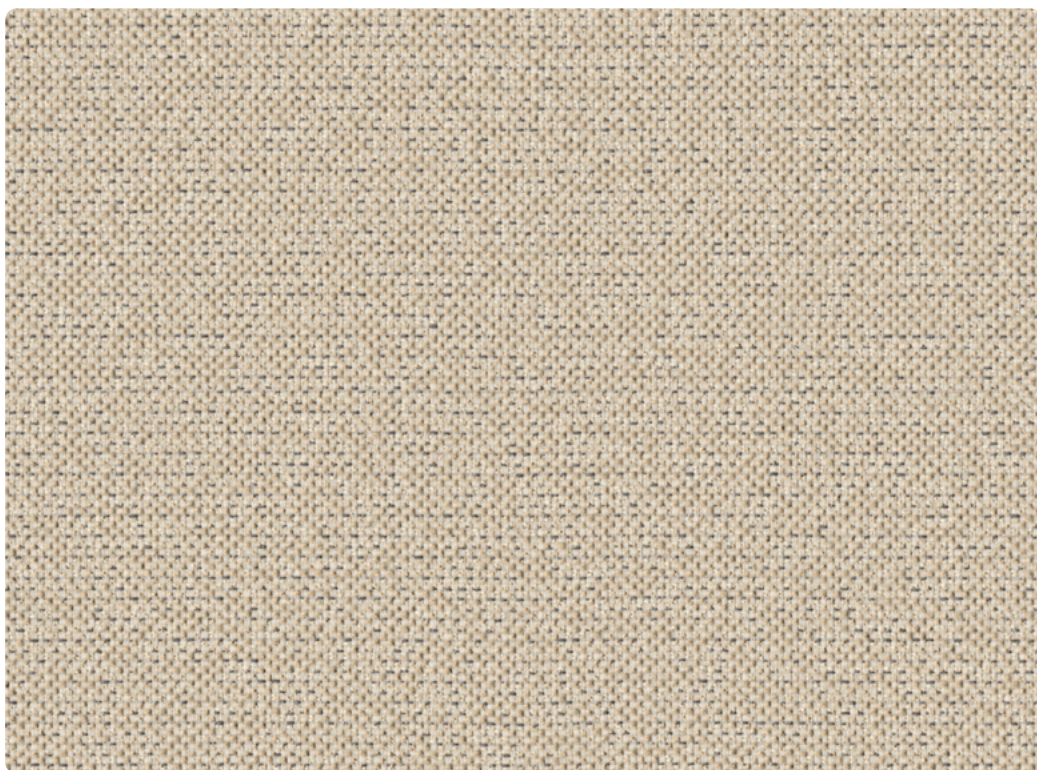
Upholstery
 Wrapped Wall
 Panel
 Screens

Content

100% Recycled
 Biodegradable* Polyester

Abrasion

Wyzenbeek
 70,000 double rubs



Windblown Silt
 2004-05



Holocene
 2004-06



Elm Pollen
 2004-10



Miocene
 2004-11



Trace Fossil
 2004-04



Rockfall
 2004-03



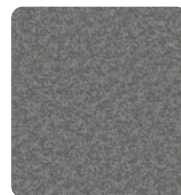
Coralline
 2004-07



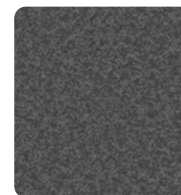
Water Table
 2004-09



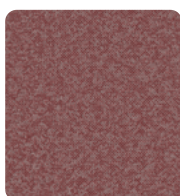
Linden
 2004-12



Henge
 2004-02



Mineralize
 2004-01



Latent Heat
 2004-08



Thaw
 2004-14



Green Algae
 2004-13



Continental Drift
 2004-15



Ocean Basin
 2004-16

Name **Texture Map**

Style No. **2004**

Designer Suzanne Tick

Specification **Use:** Upholstery, Wrapped Wall, Panel, Screens
Content: 100% Recycled Biodegradable* Polyester (Post Consumer)
Weight: 16.5 oz per linear yard
Width: 54"
Pattern Repeat: 14" Horizontal, 19.7" Vertical
Directional: Yes

Finish PFAS Free Stain Repellent

Performance **Abrasion:** ASTM D4157 Wyzenbeek 70,000 double rubs
Breaking Strength: ASTM D5034 Warp 304 lbf, Fill 426 lbf
Seam Slippage: ASTM D4034 Warp 92.9, Fill 76.7 lbf
Colorfastness to Light: AATCC 16, Grade 4 at 40 Hours
Colorfastness to Crocking: AATCC 8, Wet Class 4, Dry Class 4
Pilling: ASTM D3511 (Brush Pill), Class 4

Acoustical Rating Fabric Transparency 0.75, NRC 0.70 tested to ISO 10534-2 standards

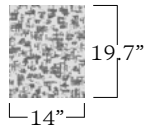
Flame Retardancy Cal TB 117-2013, NFPA 260, UFAC Class 1
 ASTM E84 Unadhered Class A or 1

Maintenance WS, Clean with either a water-based or solvent-based cleaning agent

Environmental Recycled Content
 Biodegradable*
 PFAS Free Stain Repellent
 Facts 3rd-party certified to NSF/ANSI 336 Gold

Origin Canada

Dye lots may vary slightly from samples shown. Samples shown off the bolt.



Graphic shows one full repeat.

Canada
 877.705.LUUM
 luumtextiles.ca

USA
 877.705.LUUM
 luumtextiles.com

International
 919.464.2922
 luumtextiles.com

cdn/us/int/01-24

© Luum™ 2024, all rights reserved.

*™ Trademarks used under license by Luum™, Texture Map™

**Certification Marks owned by the Association for Contract Textiles, Inc.

***Rate and extent of biodegradation into elements found in nature is 91% after 1,278 days under ASTM D5511 (Anaerobic Biodegradation of Plastic Materials Under High Solids Anaerobic Digestion Conditions.) The test was done with the same component (PET) polyester and biocatalyst additive. No evidence of further degradation.

Abrasion test results exceeding ACT Performance Guidelines are not an indicator of product lifespan. Multiple factors affect fabric durability and appearance retention.

U4-P5-A4-SC-305-2004