

LUUM

Future Tense Collection

05 — 2019



Future Tense Collection

The Future Tense Collection designed by Suzanne Tick highlights our progressive approach to textile design with an emphasis on super scale and the duality of materials. Non-traditional processes are applied to honest materials, providing new context. Each fabric requires a second look, encouraging interaction with the environment and promoting curiosity. Through questioning the tangible, we become more engaged with our surroundings.

Nodding to past eras characterized by large graphic applications and the elevation of everyday materials, the *Future Tense Collection* harnesses the power of textiles to simultaneously define and shift our spatial perspective. The five new fabrics are grounded in industrial design, celebrating advances in conscious manufacturing and sustainability. The expressive patterns and palettes are both bold and complex, reflecting the balance between harmony and discord.



Collection: Future Tense
Designer: Suzanne Tick

Use: Upholstery

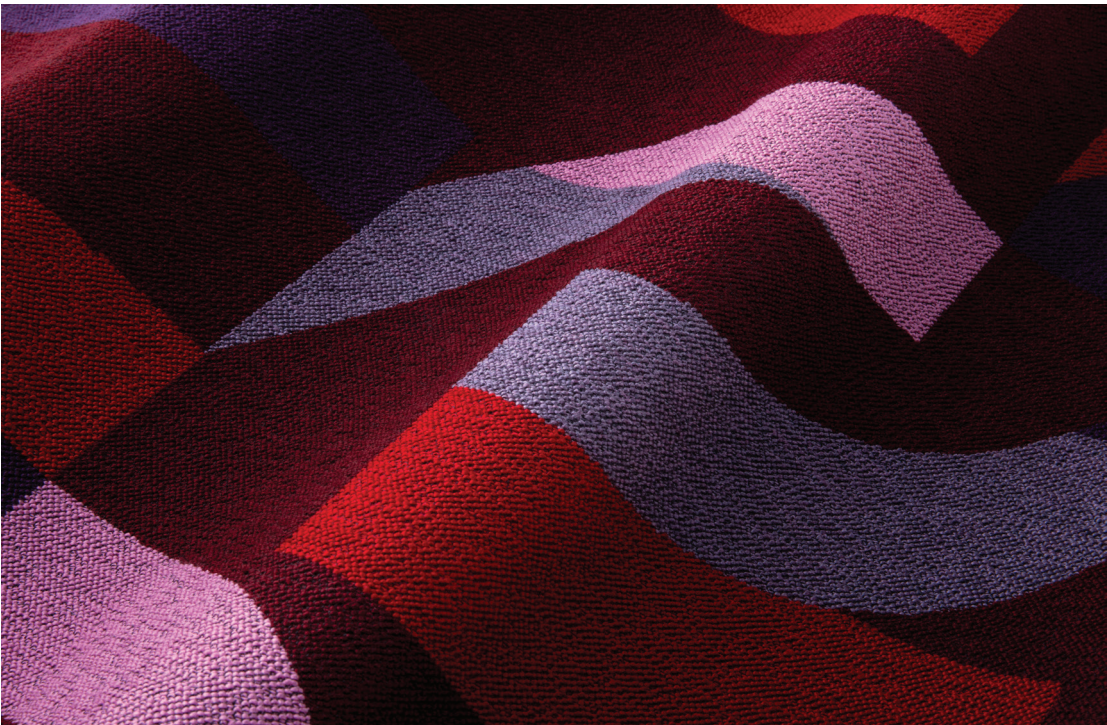
Schema’s fragmented graphic pattern honors generations of restless designers; an awakening of brilliant color and disciplined lines in an attempt to dissolve space. Nodding to recurring visual cues, super graphic patterning shifts one’s notion of scale and context while bringing vitality to an interior.

1 — Schema

Content: 73% Acrylic + 27% Polyester
Number of Colorways: 6
(shown on chair): Dynamic Nature (*Schema*), Raw Jade (*Adage*)
(shown on reverse): Concept Map
Abrasion: Wyzenbeek 65,000 double rubs
Special Characteristics: Bleach Cleanable, Heavy Metal Free, Oeko-Tex 100 Certified Yarn

By juxtaposing graphic geometries with pure hues, curvilinear forms are reintroduced in spaces both built and imagined. Digital dream spaces signify our vision of utopia, while the built environment increasingly breaks from norms and requires deeper engagement. *Schema*’s textural materiality is impactful and grounding, while imaginative and vivid colors speak to possibilities of the cerebral.





1. Schema



3. Macrotweed



2. Actuate

2 — Actuate

Actuate is a classic and versatile tonal texture. Technical fibers in a multi-faceted basket weave are softened by integrating a yarn that combines rich colors with subtle luster. This blended yarn interrupts the weave structure to create organic movement and visual interest. The next evolution of *Percept*, *Actuate* expands the offering of resonant colors in this high-performance construction. Archetypal colors pair with harmonious light tones for an unexpected and contemporary palette.

Use: Multipurpose

Content: 60% Polyester + 40% Recycled Polyester (Post-Consumer)

Number of Colorways: 16 (*shown here, top to bottom*): Lambent, Favrile, Conscious, Aqueous, Prelude

Abrasion: Wyzenbeek 100,000 double rubs

Special Characteristics: Recycled Content, Heavy Metal Free, PFOA/PFOS Free Stain Repellent

3 — Macrotweed

Macrotweed explores volume through texture and color. Marled and chunky yarns are blended to create a hyper-textural product. Amplified and graphic combinations mimic a multi-colored pattern, motivating the user to question suppositions about a textile's color, dimension, and form. The palette challenges the expected and creates an explosion of graphic hue. *Macrotweed* highlights Luum's exploration of scale, material, and construction.

Use: Upholstery

Content: 100% Polyester

Number of Colorways: 12 (*shown here, front to back*): Goldstone, Chimeric, White Ash, Reverb, Cameo, Watershed

Abrasion: Wyzenbeek 100,000 double rubs

4 — Color Fuse

Color Fuse transforms natural materials, making the tangible intangible. Translucent high-performance polyurethane is bonded to a chunky black and white cotton weave structure, creating a chromatic barrier between the user and the fiber below. The tinted color softens the effect of the contrasting substrate, while highlighting the depth of the weave. The palette represents the evolution of pastel colors toward soft but saturated hues with greater clarity of color.

Use: Upholstery

Content: Coating: 100% Polycarbonate Polyurethane, Base Cloth: 100% Cotton Woven

Number of Colorways: 9 (*shown here, top to bottom*): Sublimate (*Tilt Shift*), Freeze (*Color Fuse*), Simmer (*Tilt Shift*), Molten (*Color Fuse*), Ionize (*Tilt Shift*), Wax (*Color Fuse*), Polarize (*Tilt Shift*), Enamel (*Color Fuse*).

Abrasion: Martindale 100,000 cycles

5 — Tilt Shift

Tilt Shift's linear design and use of recycled cotton encourages us to shift our value system toward sustainability. The post-industrial and post-consumer cotton used in *Tilt Shift* is derived from apparel waste, which is carefully sorted by color, shredded, and spun into yarn. Inspired by the isometric language and forced perspective of architectural drawings, the parallax pattern engages the viewer, prompting a new outlook. The progressive palette encompasses a range of unexpected color combinations of neutrals and bold brights, to reflect a contrast of artificial and natural components.

Use: Upholstery

Content: 59% Polyester + 41% Recover® Upcycled Cotton (Post-Consumer)

Number of Colorways: 11 (*shown here, see 4, Color Fuse; shown on chair, reverse side, Temper*)

Abrasion: Wyzenbeek 100,000 double rubs

Special Characteristics: Recycled Content, PFOA/PFOS Free Stain Repellent, NSF/ANSI 336 Compliant

USA, Canada 877.705.LUUM

International 919.464.2922

luumtextiles.com