

Collection  
Structural Dimension

Designer  
Suzanne Tick

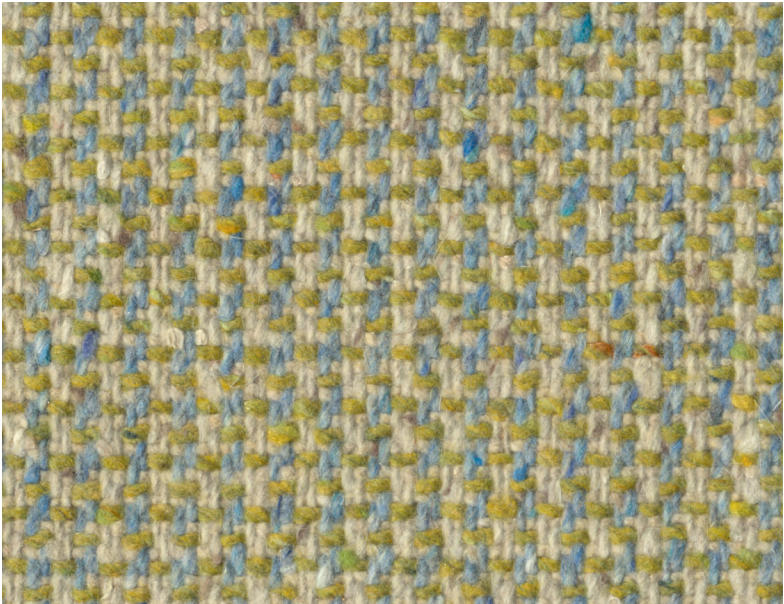
Products  
Graph Speck  
Full Wool  
Impression  
Newknit



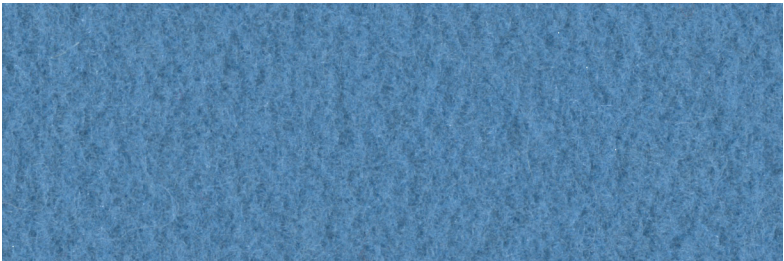
# Structural Dimension Collection by Luum

What we build together creates the shape of our future. The *Structural Dimension* collection by Suzanne Tick is a grouping of four textiles that encourages us to explore a deeper vision of how spaces can be built.

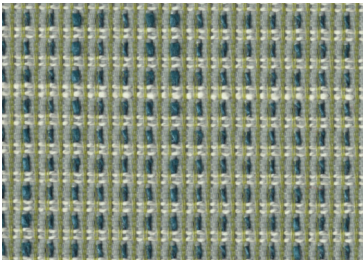
Multi-dimensional structures and classic building materials are created using fiber and construction technology, facilitating connection between users in the interior and providing opportunities for breaks from the use of two-dimensional screens. At once tactile and colorful, each textile in the *Structural Dimension* collection awakens the subtlety of our senses using the dimensional craft of weaving.



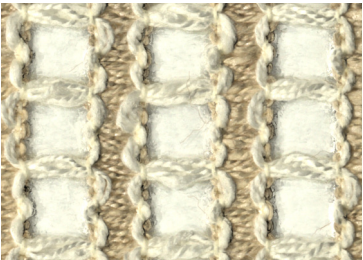
Graph Speck  
Limecrete 4106-13



Full Wool  
Sea Holly 4008-25



Impression  
Willow 7019-05



Newknit  
Fretwork 6001-01

## Graph Speck

**Use:** Upholstery  
**Content:** 51% Recycled Wool + 39% Recycled Acrylic + 10% Recycled Polyester (Preconsumer & Postconsumer)  
**Number of Colorways:** 16  
**Abrasion:** Martindale 125,000 Cycles  
**Special Characteristics:** Recycled Content, Heavy Metal Free, REACH Regulation Compliant, Renewable Content



**Binder Card Available**

Wool is a natural product. Color variations are part of the natural beauty of wool and are not considered a defect.

## Full Wool

**Use:** Upholstery/Wrapped Wall  
**Content:** 100% Wool  
**Number of Colorways:** 22  
**Abrasion:** Martindale 50,000 Cycles  
**Special Characteristics:** Chemical Finish Free, EU Ecolabel, Heavy Metal Free, Oeko-Tex 100 Certified, Renewable Content



**Binder Card Available**

Wool is a natural product. Color variations are part of the natural beauty of wool and are not considered a defect.

## Impression

**Use:** Direct Glue/Wrapped Wall  
**Content:** 59% Polyester + 41% Recycled Polyester (Postconsumer)  
**Number of Colorways:** 7  
**Special Characteristics:** Bleach Cleanable, Recycled Content, Heavy Metal Free, PFOA/PFOS Free Stain Repellent



**Binder Card Available**

## Newknit

**Use:** Drapery  
**Content:** 91% Trevira® CS Polyester + 9% Polyester  
**Number of Colorways:** 5  
**Special Characteristics:** REACH Regulation Compliant



**Binder Card Available**

Visit our website to learn more, order samples or find your local Luum Rep

**Canada**  
855.835.LUUM  
luumtextiles.ca

**USA**  
855.835.LUUM  
luumtextiles.com

**International**  
416.661.3370  
luumtextiles.com

cdn/us/int/09-22

SC-CC-SEPT22

Graph Speck U9, Full Wool U8, Impression NA, Newknit NA

© Luum 2022, all rights reserved.  
\*™ Trademarks used under license by Luum™, Graph Speck™, Full Wool™, Impression™, Newknit™

\*Certification marks owned by the Association for Contract Textiles, Inc

Abrasion test results exceeding ACT Performance Guidelines are not an indicator of product lifespan. Multiple factors affect fabric durability and appearance retention.

Dye lots may vary slightly from samples shown. All samples shown off the bolt.

Always order a memo sample for complete colorway representation.