

Name
Trichroma

Designer
Suzanne Tick

Style No.
4127

Collection
Kinetic Energy

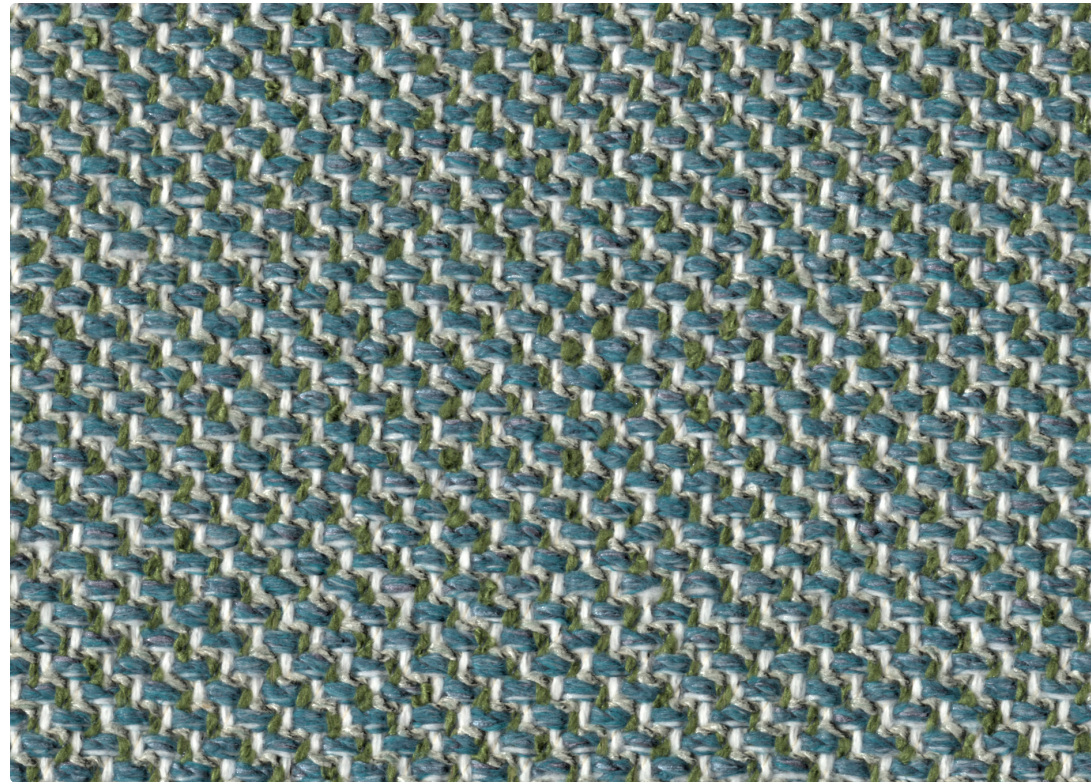
Use
Upholstery

Content
51% Recycled Polyester, 49% Polyester

Abrasion
Wyzenbeek 75,000 double rubs

Special Characteristics
Bleach Cleanable

Environmental
Recycled Content
Heavy Metal Free



Splash 4127-11



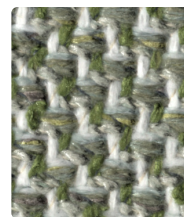
Whistle 4127-03



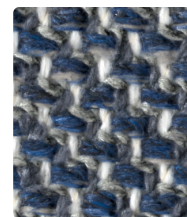
Frolic 4127-04



Amble 4127-07



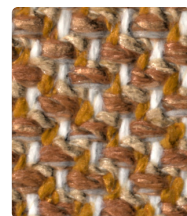
Cultivate 4127-10



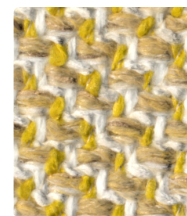
Plunge 4127-13



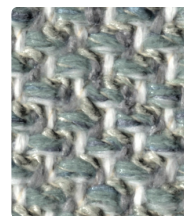
Wash 4127-02



Roam 4127-06



Somersault 4127-08



Drizzle 4127-12



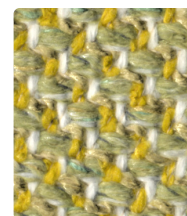
Barge 4127-14



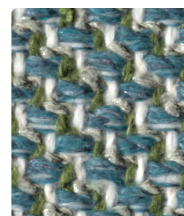
Siphon 4127-01



Sashay 4127-05



Leapfrog 4127-09



Splash 4127-11



Vault 4127-15

Name **Trichroma**

Style No. **4127**

Specification

Use: Upholstery
Content: 51% Recycled Polyester (Post Consumer), 49% Polyester
Weight: 28.8 oz per linear yard
Width: 54"
Pattern Repeat: None
 This style is designed to be applied randomly to minimize waste
Directional: Yes

Finish Acrylic Backing

Performance

Abrasion: ASTM D4157 Wyzenbeek 75,000 double rubs
Breaking Strength: ASTM D5034 Warp 50 lbf, Fill 50lbf
Seam Slippage: ASTM D4034 Warp 40 lbf, Fill 40 lbf
Colorfastness to Light: AATCC 16, Grade 4 at 40 Hours
Colorfastness to Crocking: AATCC 8, Wet Class 4, Dry Class 4
Pilling: ASTM D3511 (Brush Pill), Class 4

Flame Retardancy Cal TB 117-2013, UFAC Class 1

Maintenance W, Clean with a water-based cleaning agent. Do not use solvent products
 Bleach Cleanable: 9% (10:1 Ratio), wipe with water after solution

Environmental Recycled Content
 Heavy Metal Free

Origin USA

Dye lots may vary slightly from samples shown. Samples shown off the bolt.



Canada
 877.705.LUUM
 luumtextiles.ca

USA
 877.705.LUUM
 luumtextiles.com

International
 919.464.2922
 luumtextiles.com

cdn/us/int/09-24

© Luum™ 2024, all rights reserved.
 *,™ Trademarks used under license by Luum™, Trichroma™
 *Certification Marks owned by the Association for Contract Textiles, Inc.
 Abrasion test results exceeding ACT Performance Guidelines are not an indicator of product lifespan.
 Multiple factors affect fabric durability and appearance retention.

U4-SC-305-4127