

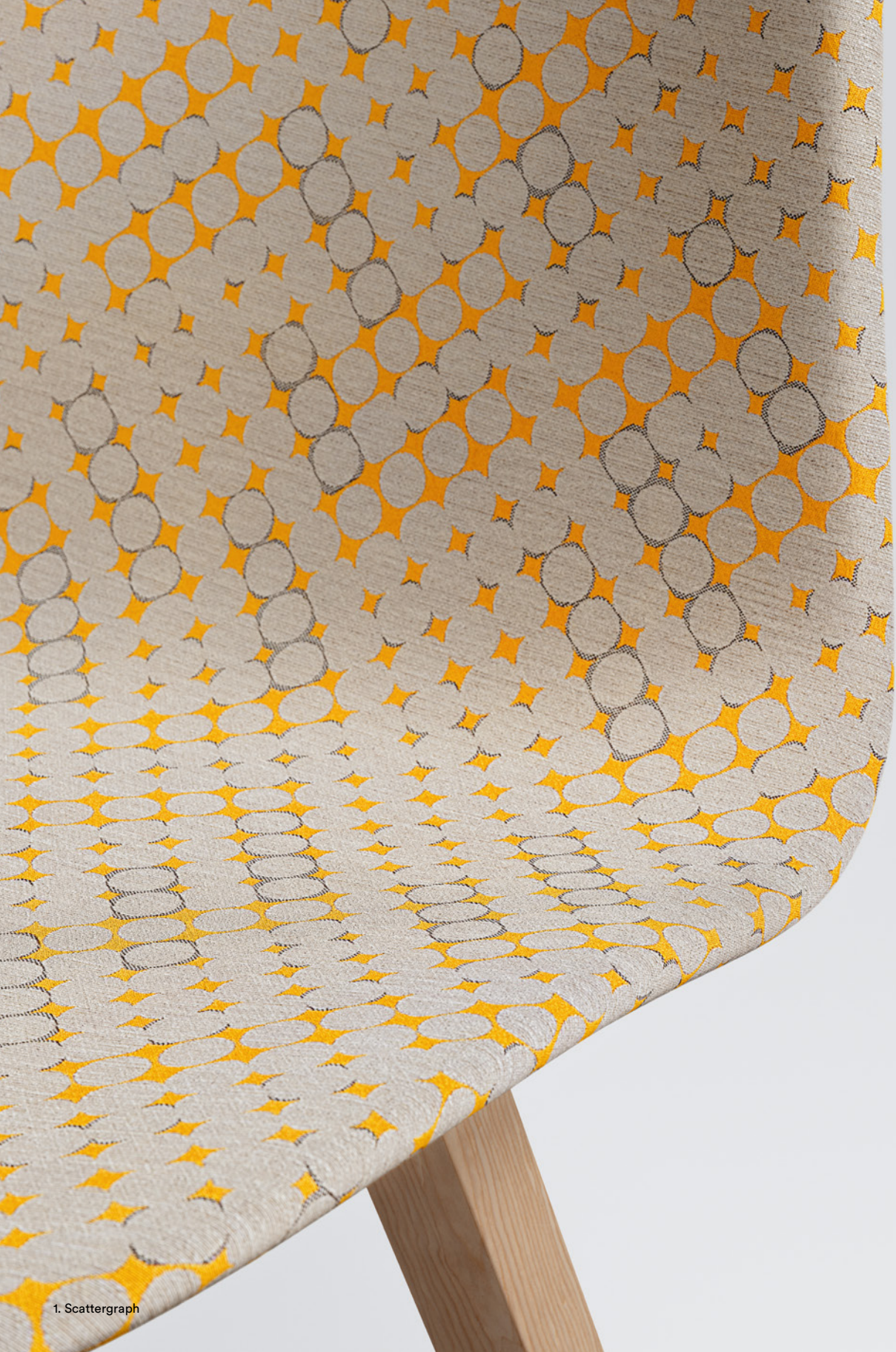
LUUM

Kinetic Energy Collection

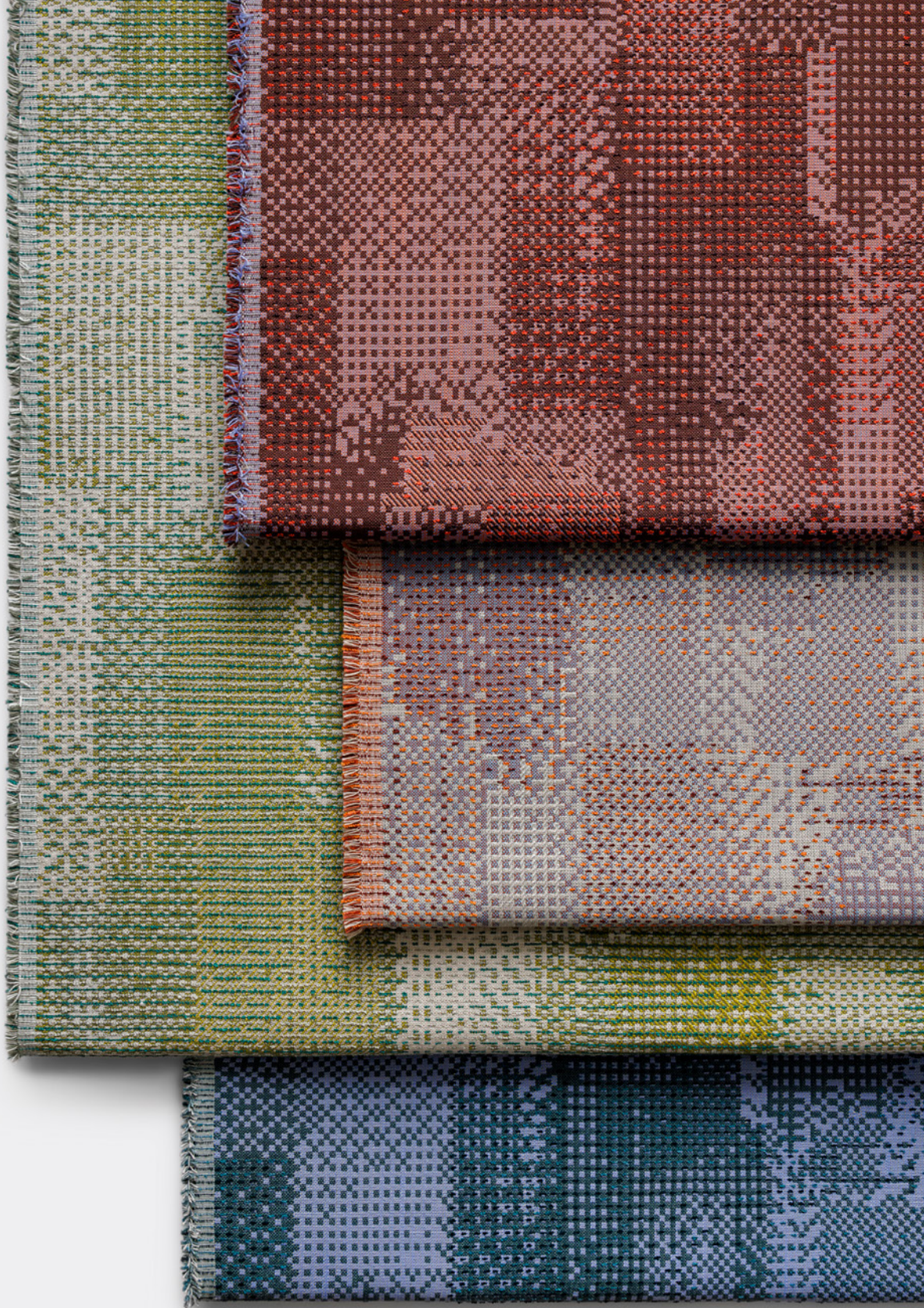


Kinetic Energy Collection

How does change happen and how can we use it to better our world? *Kinetic Energy* is a captivating collection of six sustainable textiles by Suzanne Tick that draws inspiration from the dynamic motion of both the digital and physical realms. Bringing the transformative power of movement into our spaces, this collection invigorates and inspires us with innovative weave structures, vibrant color combinations, and artful explorations of materiality—mirroring our collective energy to forge, nurture, and reshape our environments for the greater good.



1. Scattergraph



1 — Scattergraph

With a dynamic and playful motif, *Scattergraph* embodies an energy that references augmented reality and merges our physical and digital worlds. Its cascading pattern of curved squares fluctuates in contrast thanks to its usage of buzzy neon yarns alongside more grounded heathered yarns. *Scattergraph* offers durability for a variety of furniture forms in workplace and higher education settings—and is available in 10 bright colorways with a PFAS-free stain repellent.

Use: Upholstery

Content: 36% Polyester, 33% Nylon, 21% Acrylic, 10% Recycled Polyester (Post-Consumer)

Number of Colorways: 10 (*shown on chair*): Zing (*shown on reverse, top to bottom*): Shocking Pink, Razzle, Limelight, Absynthe, Zing, Ruby Laser

Abrasion: Wyzenbeek 100,000 double rubs

Special Characteristics: Recycled Content, Heavy Metal Free, PFAS Free Stain Repellent, North American Made

2 — Datastorm

Inspired by the abundance of information in our digital world, *Datastorm*'s technical assemblage of cells cascade along the surface of this multicolored textile like cyber patchwork—ebbing and flowing organically to create a layered pattern. Each colorway is punctuated by unique tonal and brightly-colored boucle accents, creating opportunities for color coordination across the Luum line. Bleach cleanable, made from 50% post-consumer recycled polyester, and available in nine colorways, *Datastorm* is well-suited for hospitality, workplace, and higher education applications.

Use: Upholstery

Content: 50% Recycled Polyester (Post-Consumer), 50% Polyester

Number of Colorways: 9 (*shown here, top to bottom*): Hot Wire, Qubit, Zap, Streaming

Abrasion: Wyzenbeek 100,000 double rubs

Special Characteristics: Bleach Cleanable, Heavy Metal Free, Recycled Content, Oeko Tex 100 Cat II, REACH Regulation Compliant

3 — Trichroma

As its name suggests, *Trichroma* displays a multicolor, highly-dimensional twill structure that runs diagonally, instantly transforming the traditional into the contemporary through use of color and material. Robust yet refined, this weave employs thick and voluminous yarns made from 51% recycled polyester to create dimensionality that's both tactile and visually stunning. By combining an alternating end-and-end warp with three other uniquely colorful novelty yarns in the weft, the result feels organic, irregular, and substantial—yet still high-performance and bleach cleanable.

Use: Upholstery

Content: 51% Recycled Polyester (Post-Consumer), 49% Polyester

Number of Colorways: 15 (*shown on reverse, top to bottom*): Frolic, Somersault, Roam, Sashay

Abrasion: Wyzenbeek 75,000 double rubs

Special Characteristics: Bleach Cleanable, Recycled Content, Heavy Metal Free, North American Made



4 ——— Lithoprint

Developed over three years of application testing, *Lithoprint* is Luum's first domestically-produced coated textile, made with cleaner chemistry and more sustainable manufacturing methods. This elegant small-scale, textile-like pattern is created through a printmaking process: coated with 12 custom ground colors, printed with a slub-like pattern, and finally, embossed for a matte, textured effect. Comprised of a polyurethane base, silicone top coat, and knit backing, *Lithoprint* is engineered to balance elasticity with upholsterability—creating a surface that's wipeable, stain-resistant, bleach cleanable, and appropriate for all marketplaces.

Use: Upholstery

Content: Face: 95% Polycarbonate Polyurethane, 5% Silicone, Back: 100% Polyester Knit

Number of Colorways: 12 (*shown here, top to bottom*): Cloudy Crystal, Space Rock, Marquise, Sea Pearl

Abrasion: Wyzenbeek 100,000 double rubs

Special Characteristics: Bleach Cleanable, 15 Weeks Hydrolysis, North American Made, Inherently Ink and Stain Resistant, Heavy Metal Free, PVC Free

5 ——— Median

Composed of 40% recycled content, *Median* is a visually-inviting, multi-purpose upholstery that uses boucle and chenille yarns for a harmonious yet variegated surface. *Median* alternates bulkier, matte boucle yarns in a fine warp structure with thinner, luminescent chenille yarns in the weft to create an appealing horizontal texture. Perfect for furniture of all types, as well as wrapped walls, panels, and screens, *Median* transforms spaces with a soft, textured sensation.

Use: Multipurpose

Content: 60% Polyester, 40% Recycled Polyester (Post-Consumer)

Number of Colorways: 22 (*shown here, top to bottom*): Leblanc, Jaune, Comandra, Mignonette

Abrasion: Wyzenbeek 60,000 double rubs

Special Characteristics: Recycled Content, PFAS Free Stain Repellent, North American Made

6 ——— Earthshine

Encompassing beauty, performance, and cleanability in one lustrous surface, *Earthshine* adds functional refinement to wrapped walls. Its use of vibrant polyethylene tape yarn in both warp and weft maximizes light reflection and expresses the feelings of movement and luxury. As Luum's first wrapped wall textile with tape yarn in both warp and weft, *Earthshine* compares nicely to other tape constructions on the market and is both scrubbable and bleach cleanable. The luminosity and depth of its structure illuminates vertical surfaces, transforming spaces with a heavily textured sensation.

Use: Wrapped Wall

Content: 73% Polyethylene, 27% Olefin

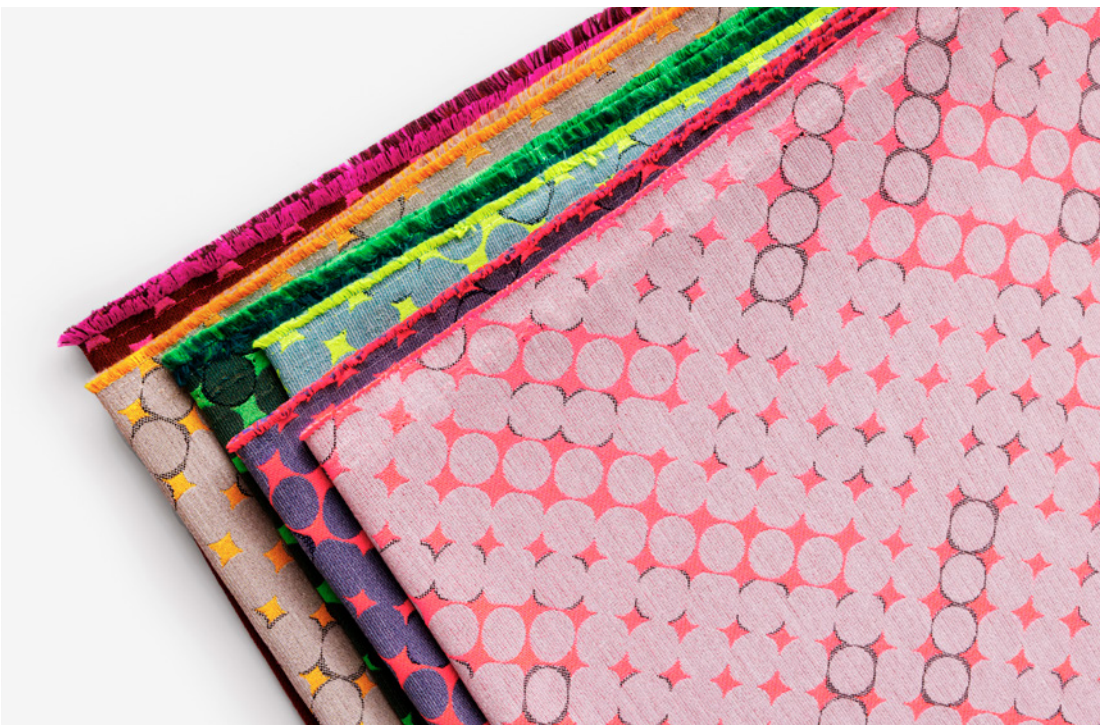
Number of Colorways: 6 (*shown here, top to bottom*): Argon Flash, Shade, Umbra, Scatter

Special Characteristics: Bleach Cleanable, Scrubbable, North American Made, Chemical Finish Free, Heavy Metal Free, Facts 3rd-party certified to NSF/ANSI 336 Compliant, REACH Regulation Compliant



USA, Canada 877.705.LUUM
International 919.464.2922

luumtextiles.com



1. Scattergraph

6. Earthshine & 4. Lithoprint

