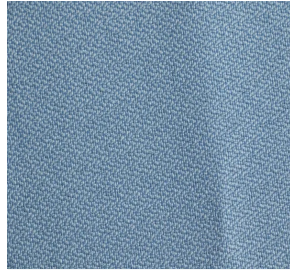


Baby Blue 1B01  
(MS 401)



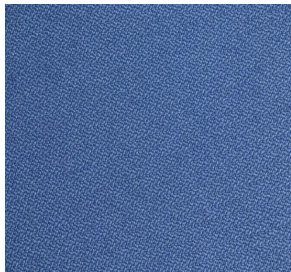
Dolphin 1B02  
(MS 402)



Electric 1B03  
(MS 403)



Amalfi 1B04  
(MS 404)



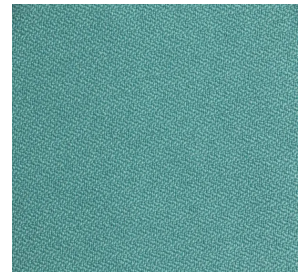
Med Blue 1B05  
(MS 405)



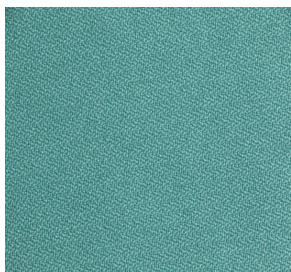
Corn Flower 1B06  
(MS 406)



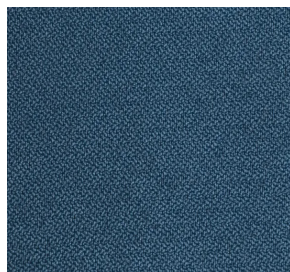
China Sea 1B07  
(MS 407)



Waterfall 1B08  
(MS 409)



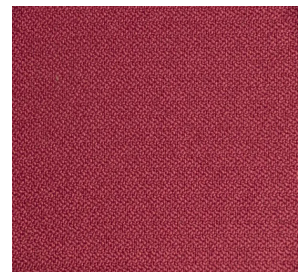
Vesuvius 1B09  
(MS 410)



Turchino 1B10  
(MS 411)



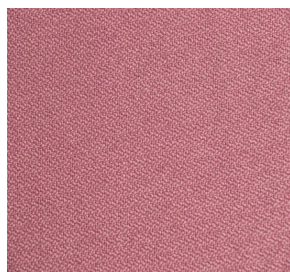
Lilac 1B11  
(MS 412)



Blush 1B12  
(MS 413)



Fuscia 1B13  
(MS 414)



Pink 1B14  
(MS 415)

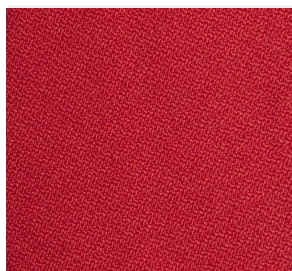


Lavender 1B15  
(MS 416)

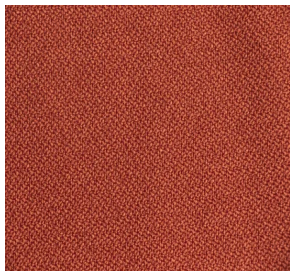


Amethyst 1B16  
(MS 417)

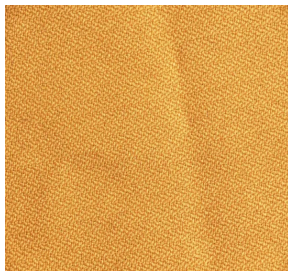




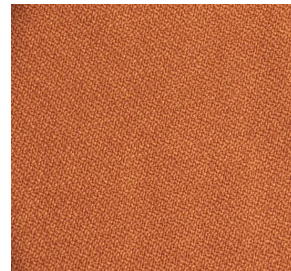
Flame IB17  
(MS 418)



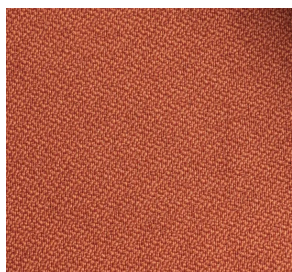
Aattenzione IB18  
(MS 419)



Fresco IB19  
(MS 420)



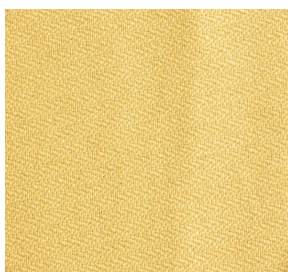
Burnt Orange IB20  
(MS 421)



Cinnamon IB21  
(MS 422)



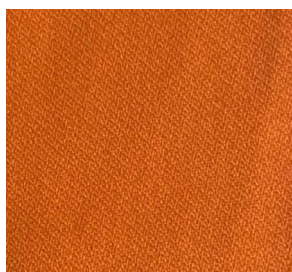
Warm Glow IB22  
(MS 423)



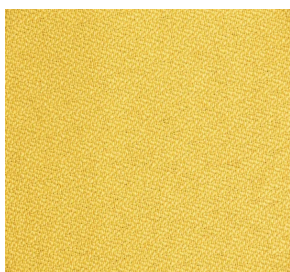
Villa De Sole IB23  
(MS 424)



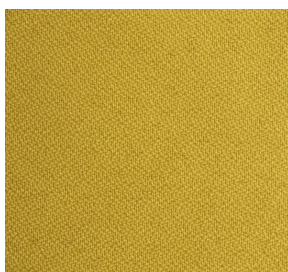
Salmon IB24  
(MS 425)



Dago Orange IB25  
(MS 426)



Lemon IB26  
(MS 427)



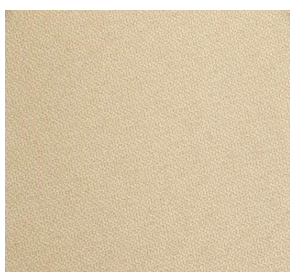
Frengia IB27  
(MS 428)



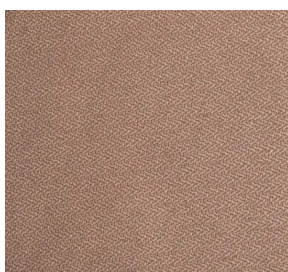
Neutro IB28  
(MS 429)



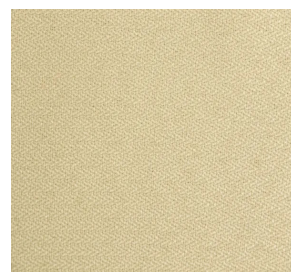
Cream IB29  
(MS 430)



Peach Cream IB30  
(MS 431)

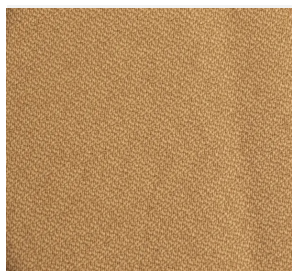


Peach IB31  
(MS 432)

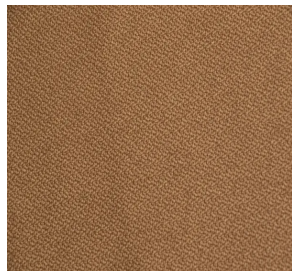


Latte IB32  
(MS 433)





Indian Coffee IB33  
(MS 434)



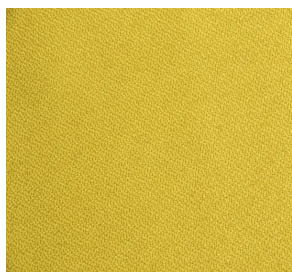
Caramel IB34  
(MS 435)



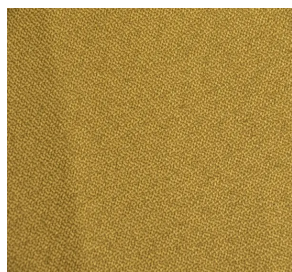
Acron IB35  
(MS 436)



Dark Forest IB36  
(MS 437)



Relection IB37  
(MS 438)



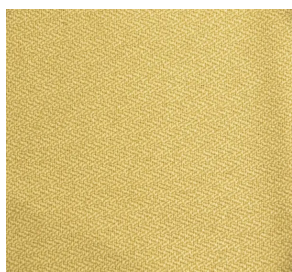
Olive IB38  
(MS 439)



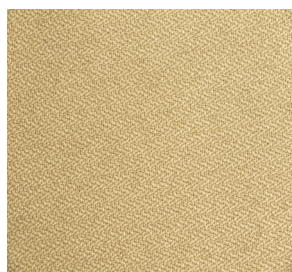
Roman Green IB39  
(MS 440)



Azazon IB40  
(MS 441)



Verde IB41  
(MS 442)



Duomo IB42  
(MS 443)



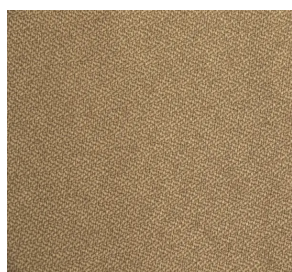
Verona IB43  
(MS 444)



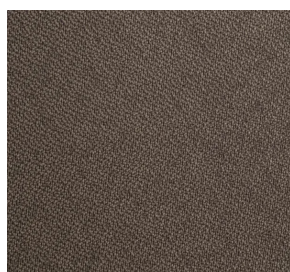
Bramble IB44  
(MS 445)



Cloud IB45  
(MS 446)



Arno IB46  
(MS 447)



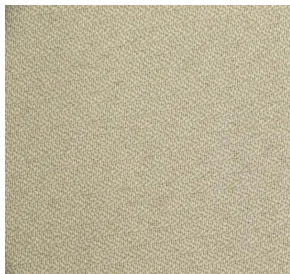
Greysto IB47  
(MS 448)



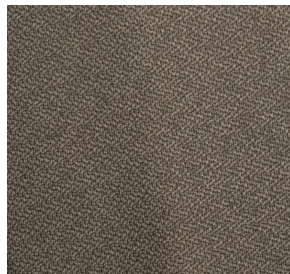
Mink IB48  
(MS 449)



Acid IB49  
(MS 450)



Gargoyle IB50  
(MS 451)



Granada IB51  
(MS 452)



Black IB52  
(MS 453)

COMPOSITION	:100% Polyester
WEIGHT	:340 grams per liner meter
WIDTH	:140cms/55* +/-2%
ABRASION	:In excess of 60,000 Cycles Martindale Abrasion tester at 12KPA Pressure
FLAMMABILITY	:BS EN 1021-1: 1994(Cigarette) BS 7176: 1995 Low Hazard Flammability performance is dependent on the combination of material used
FASTNESS TO LIGHT	:5(ISO: 105-B02,2000)
MAINTENANCE	:Professional cleaning is recommended.
FASTNESS TO RUBBING	:Wet: 4-5 & Dry: 4-5
COLOUR MATCHING	:Batch to batch variations in shade may occur within commercial tolerances.
OPTION 1	:Fire retardant – Fabric will meet BS EN 1021 (Match) and IS: 1561-2002 when treated with FR extreme process.
OPTION 2	:Hydroguard – This special treatment is applied to provide water and stain repellency.

Colours represented on this card are digital and intended to provide an overview of our finish program. Refer to individual samples to view actual material.

REMARKS: THESE RANGE OF FABRIC IS ONLY AVAILABLE AT TEKNION INDIA.

[WWW.TEKNION.COM](http://WWW.TEKNION.COM)

TO ORDER INDIVIDUAL SAMPLES, PLEASE VISIT [WWW.TEKNION.COM](http://WWW.TEKNION.COM) OR CONTACT YOUR TEKNION REPRESENTATIVE. WHILE TEKNION USES EVERY EFFORT TO MAINTAIN STRICT STANDARDS AND CONSISTENCY OF FINISH, COLOR AND TEXTURE THERE MAY BE SLIGHT VARIATIONS BETWEEN THE SAMPLES SHOWN AND THE ACTUAL PRODUCT.

ASIA  
TEL 603.3342.4345  
603.3342.3466  
INFO.TEKNION.  
MALAYSIA@TEKNION.  
COM

CANADA  
TEL 866.TEKNION  
866.835.6466  
INFO.CAN@TEKNION.  
COM

USA  
TEL 877.TEKNION  
877.835.6466  
INFO.US@TEKNION.  
COM

OTHER OFFICES  
EUROPE, SOUTH AND  
CENTRAL AMERICA,  
MIDDLE EAST, RUSSIA

FOR REGIONAL  
INFORMATION GO TO  
[WWW.TEKNION.COM](http://WWW.TEKNION.COM)  
TEL 416.661.3370  
TEKINTL@TEKNION.COM

MY 07-23

© TEKNION 2023

®, ™ TRADE MARKS OF TEKNION CORPORATION AND/OR ITS SUBSIDIARIES OR LICENSED TO IT. PATENTS MAY BE PENDING. SOME PRODUCTS MAY NOT BE AVAILABLE IN ALL MARKETS. CONTACT YOUR LOCAL TEKNION REPRESENTATIVE FOR AVAILABILITY.