

### Collection

Fabric of Space

### Designer

Suzanne Tick

### Products

Spectral Array

Graviton

Welded

Formwork

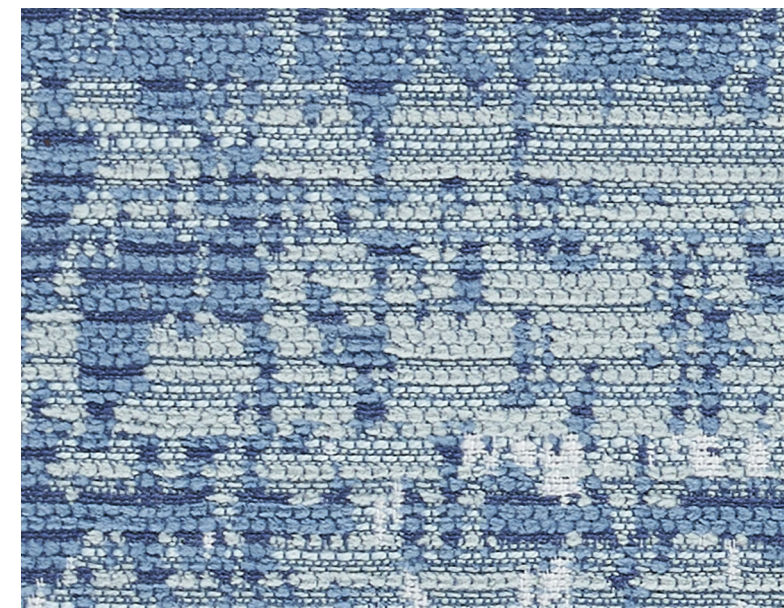
Emergent



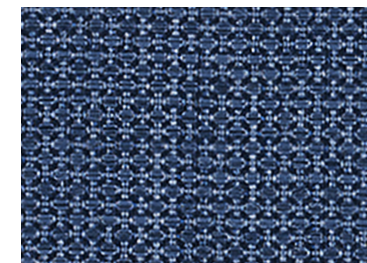
## Fabric of Space Collection by Luum

Fabric of Space, a collection of five textiles by Suzanne Tick, draws inspiration from the ever-expanding universe — intersecting the matrices of time, matter, and energy to weave the world around us.

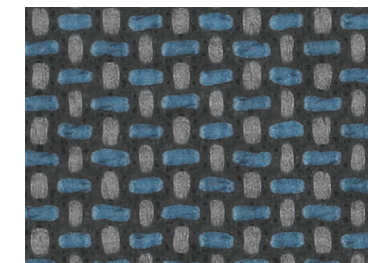
With its multidimensional networks of layers and patterns, Fabric of Space mirrors the structural building blocks of our universe — awakening us more fully to our place in the world. Together, we experience the expansive choreography of the galaxy with Emergent, the patterns of star trails in Formwork, the frequency and sensory impact of sound waves through Spectral Array, and the rooted layers of earth of Welded and Graviton.



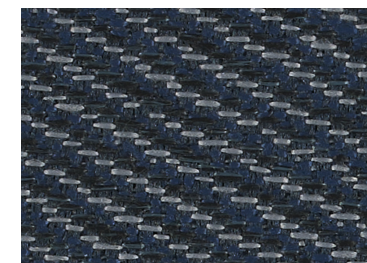
Spectral Array  
Cerebral 4103-05



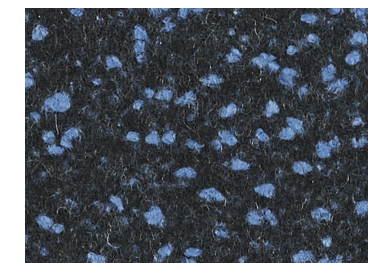
Graviton  
Condensation 1034-12



Welded  
Alliance 4095-01



Formwork  
Precipitant 4102-12



Emergent  
Galaxy 4101-01

### Spectral Array

Use: Upholstery

Content: 100% UV Polyester

Number of Colorways: 8

Abrasion: Wyzenbeek 63,000 double rubs

Special Characteristics: Bleach Cleanable, Heavy

Metal Free, Fluorine Free Stain Repellent,

Greenguard Gold Certified, 400-1,200 hours of

Lightfastness

☑️ 🌿 🌟 🌠 🌠

### Graviton

Use: Multipurpose

Content: 100% Recycled Polyester (Postconsumer)

Number of Colorways: 16

Abrasion: Wyzenbeek 100,000 double rubs

Special Characteristics: Recycled Content, Heavy

Metal Free, PFOS/PFOA Free Stain Repellent,

REACH Regulation Compliant

☑️ 🌿 🌟 🌠 🌠

**Binder Card Available**

### Welded

Use: Upholstery

Content: Coating: 100% Tekloom TPE

Base Cloth: 100% Polyester Woven

Number of Colorways: 11

Abrasion: Wyzenbeek 105,000 double rubs\*\*

Special Characteristics: Bleach Cleanable,

Inherently Ink and Stain Resistant, Chemical

Finish Free, DMF Free, Heavy Metal Free, REACH

Regulation Compliant, Complies with California

Section 03150 VOC Emission Standards

☑️ 🌿 🌟 🌠 🌠

**Binder Card Available**

### Formwork

Use: Multipurpose

Content: 51% Recycled Polyester (Postconsumer)

+ 49% Polyester

Number of Colorways: 12

Abrasion: Wyzenbeek 100,000 double rubs

Special Characteristics: Bleach Cleanable,

Recycled Content, Heavy Metal Free, PFOA/PFOS

Free Stain Repellent

☑️ 🌿 🌟 🌠 🌠

**Binder Card Available**

### Emergent

Use: Upholstery

Content: 45% Cotton, 40% Recycled Wool,

10% Recycled Polyester, 3% Recycled Acrylic,

2% Recycled Nylon (Preconsumer)

Number of Colorways: 11

Abrasion: Martindale 50,000+ cycles

Special Characteristics: Renewable Content,

Recycled Content, Heavy Metal Free, REACH

Regulation Compliant

☑️ 🌿 🌟 🌠 🌠

Wool is a natural product. Color variations are part of the natural beauty of wool and are not considered a defect.

Visit our website to learn more, order samples or find your local Luum Rep

**Canada**  
855.835.LUUM  
luumtextiles.ca

**USA**  
855.835.LUUM  
luumtextiles.com

**International**  
416.661.3370  
luumtextiles.com

cdn/us/int/05-22

SC-CC-May22

Spectral Array NA, Graviton U2, Welded U8, Formwork U4, Emergent U13

© Luum 2022, all rights reserved.

\*™ Trademarks used under license by Luum™, Spectral Array™, Graviton™, Welded™, Formwork™, Emergent™

\*Certification marks owned by the Association for Contract Textiles, Inc.

Abrasion test results exceeding ACT Performance Guidelines are not an indicator of product lifespan. Multiple factors affect fabric durability and appearance retention.

Dye lots may vary slightly from samples shown. All samples shown off the bolt.

Always order a memo sample for complete colorway representation.