



Color Kit By Luum

Utilizing classic textures: *Actuate*, *Digi Tweed*, *Heather Tech* and *Percept*, Color Kit is a resource for color in design-driven, high-performance textiles. Muted and soft, rich and saturated, this multi-purpose grouping offers coordinates as well as unexpected contemporary hues for palettes in a variety of project types. All textiles are applicable for the performance needs of upholstery, panels, screens and acoustical wrapped walls.

Name

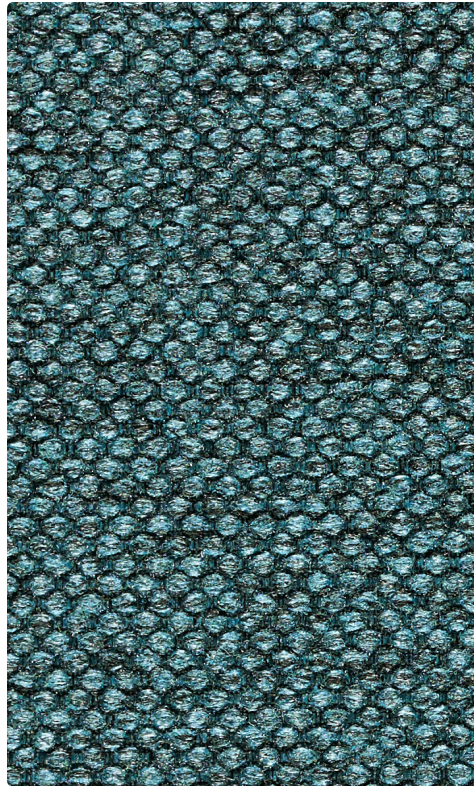
Actuate
Digi Tweed
Heather Tech
Percept

Designer

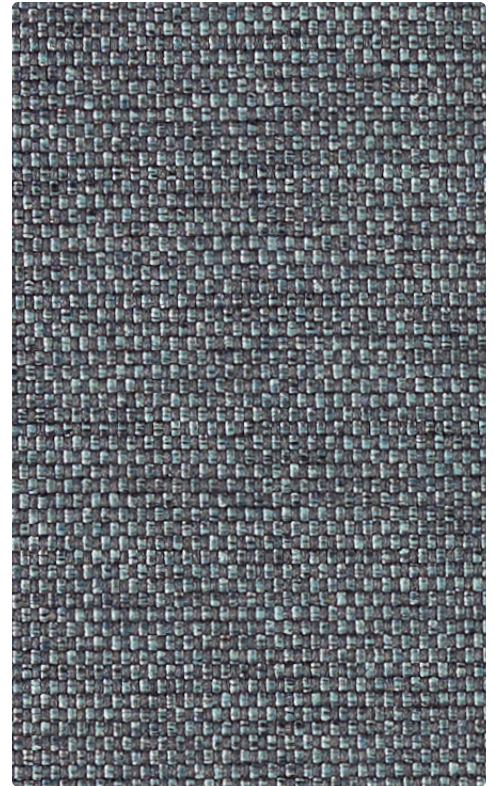
Suzanne Tick

Use

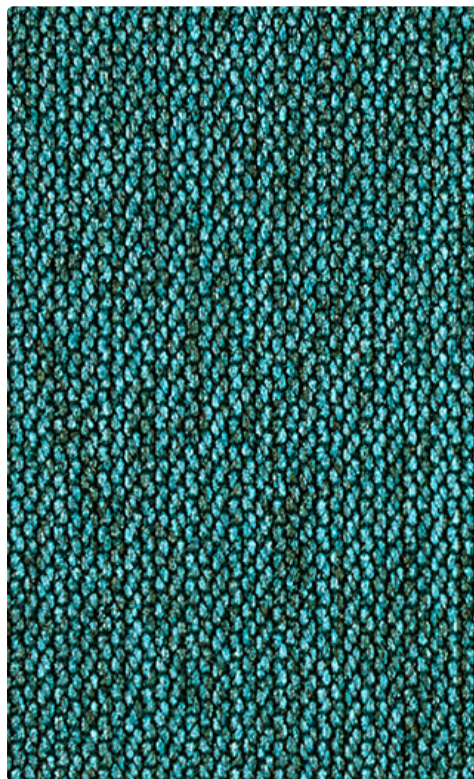
Upholstery
Wrapped Wall
Panel
Screens



Digi Tweed
Loch Tweed 4058-20



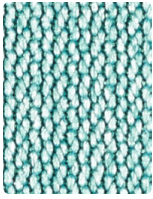
Actuate
Favrile 4073-12



Percept
Peak 4040-12



Heather Tech
Loch Tech 4059-20



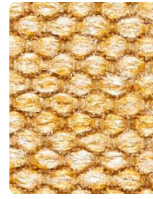
Percept
Tenet 4040-11



Digi Tweed
Loden Tweed
4068-09



Actuate
Concious 4073-10



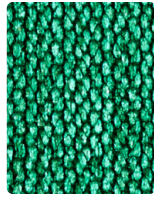
Digi Tweed
Sundew Tweed
4058-12



Percept
Constant 4040-23



Digi Tweed
Clear Tweed 4058-19



Percept
Jubilant 4040-10



Digi Tweed
Sagebrush Tweed
4058-10



Heather Tech
Sundew Tech
4059-12



Actuate
Suffuse 4073-07



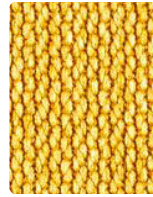
Heather Tech
Clear Tech
4059-19



Actuate
Fortify 4073-11



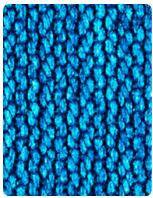
Heather Tech
Sagebrush Tech
4059-10



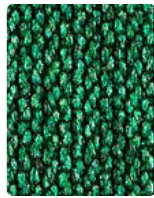
Percept
Radiant 4040-24



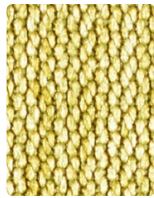
Heather Tech
Flax Tech 4059-04



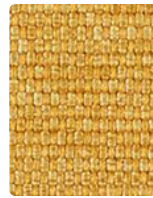
Percept
Amplitude
4040-13



Percept
Propagate 4040-25



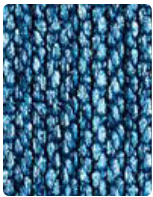
Percept
Epiphany
4040-08



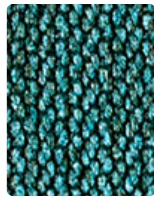
Actuate
Lambent
4073-09



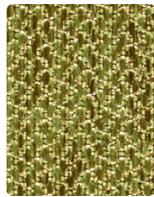
Percept
Schema 4040-07



Percept
Placid 4040-26



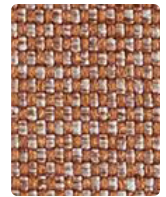
Percept
Peak 4040-12



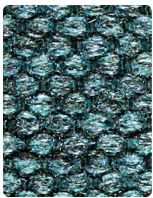
Percept
Reason 4040-09



Digi Tweed
Meadow Tweed
4058-11



Actuate
Mordant 4073-08



Digi Tweed
Loch Tweed
4058-20



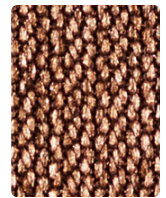
Heather Tech
Loch Tech
4059-20



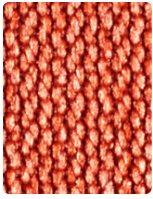
Heather Tech
Loden Tech
4059-09



Heather Tech
Meadow Tech
4059-11



Percept
Intrinsic 4040-
064059-11



Percept
Verve 4040-19



Digi Tweed
Rose Tweed
4058-13



Heather Tech
Thistle Tech
4059-17



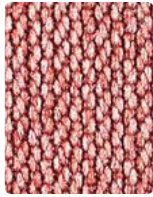
Digi Tweed
Thistle Tweed
4058-17



Percept
Fringe 4040-28



Digi Tweed
Raspite Tweed
4058-14



Percept
Pulse 4040-22



Actuate
Prelude 4073-13



Digi Tweed
Lav Tweed
4058-18



Percept
Harmonic
4040-14



Actuate
Meridian 4073-14



Heather Tech
Rose Tech
4059-13



Percept
Devotion 4040-16



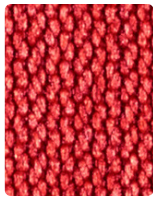
Heather Tech
Lav Tech 4059-18



Actuate
Aqueous
4073-01



Heather Tech
Raspite Tech
4059-14



Percept
Cardinality
4040-17



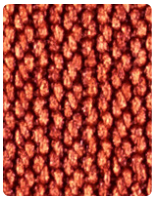
Digi Tweed
Beetroot Tweed
4058-16



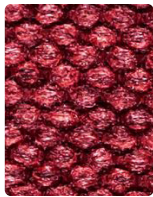
Digi Tweed
North Sea Tweed
4058-22



Digi Tweed
Ocean Tweed
4058-21



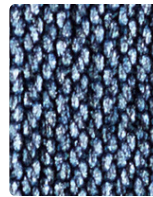
Percept
Ignite 4040-18



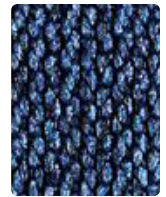
Digi Tweed
Maddier Tweed
4058-15



Heather Tech
Beetroot Tech
4059-16



Percept
Nebula 4040-15



Percept
Singular 4040-27



Actuate
Thermal 4073-15



Heather Tech
Maddier Tech
4059-15



Actuate
Induction
4073-16



Heather Tech
Ocean Tech
4059-22



Heather Tech
Ocean Tech
4059-21



Heather Tech
Basalt Tech
4059-08



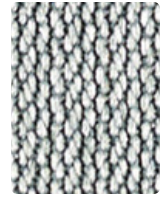
Digi Tweed
Basalt Tweed
4058-08



Digi Tweed
Oat Tweed
4058-03



Digi Tweed
Topaz Tweed
4058-02



Percept
Pristine 4040-01



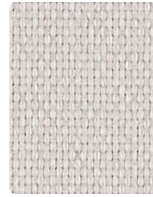
Actuate
Aether 4073-03



Heather Tech
Crag Tech
4059-07



Heather Tech
Oat Tech 4059-03



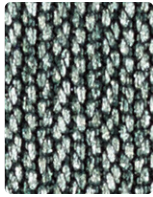
Heather Tech
Topaz Tech
4059-02



Digi Tweed
Dust Tweed
4058-01



Digi Tweed
Onyx Tweed
4058-23



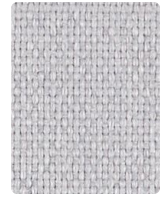
Percept
Context 4040-03



Digi Tweed
Flax Tweed
4058-04



Actuate
Vanish 4073-06



Heather Tech
Dust Tech
4059-01



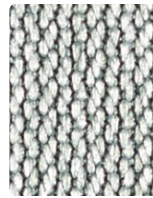
Percept
Transmit 4040-20



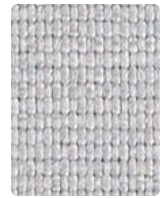
Heather Tech
Obsidian Tech
4059-24



Digi Tweed
Silt Tweed
4058-05



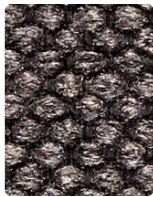
Percept
Sublime 4040-02



Actuate
Syntax 4073-05



Heather Tech
Onyx Tech
4059-23



Digi Tweed
Obsidian Tweed
4058-24



Percept
Render 4040-21



Digi Tweed
Loam Tweed
4058-06



Digi Tweed
Crag Tweed
4058-07



Actuate
Spectral 4073-02



Percept
Essence 4040-04



Heather Tech
Silt Tech 4059-05



Heather Tech
Loam Tech
4059-06



Actuate
Facet 4073-04

Specification

Actuate

Upholstery,
Wrapped Wall,
Panel, Screens

Content: 60% Polyester +
40% Recycled Polyester
(Postconsumer)

Origin: USA

Weight: 18.8 oz/ly
Width: 54"
Repeat: None
Directional: No

Finish: Latex Backing, Stain Repellent
Abrasion: ASTM D4157 Wyzenbeek 100,000 double rubs
Breaking Strength: ASTM D5034 Warp 272 lbf, Fill 374 lbf
Seam Slippage: ASTM D4034 Warp 73 lbf, Fill 54 lbf
Colorfastness to Light: AATCC 16, Grade 4 at 40 Hours
Colorfastness to Crocking: AATCC 8, Wet Class 4.5, Dry Class 4.5
Pilling: ASTM D3511 (Brush Pill), Class 5
Acoustical Rating*: Fabric Transparency 0.80, NRC 0.70
Flame Retardancy: Cal TB 117-2013, UFAC Class 1 NFPA 260, ASTM E84 Unadhered Class A or 1
Maintenance: WS, Clean with either a water-based or solvent-based cleaning agent.
Environmental: Heavy Metal Free, PFOA/PFOS Free Stain Repellent, Recycled Content
☑️🔥🌿🌟🌟

Digi Tweed

Upholstery,
Wrapped Wall,
Panel, Screens

Content: 55% Recycled
Polyester (Postconsumer) +
45% Polyester

Origin: USA

Weight: 19.6 oz/ly
Width: 54"
Pattern Repeat: None
Directional: Yes

Finish: Stain Repellent
Abrasion: ASTM D4157 Wyzenbeek 100,000 double rubs
Breaking Strength: ASTM D5034 Warp 331 lbf, Fill 368 lbf
Seam Slippage: ASTM D4034 Warp 158 lbf, Fill 242 lbf
Colorfastness to Light: AATCC 16, Grade 4 at 40 Hours
Colorfastness to Crocking: AATCC 8, Wet Class 4, Dry Class 4
Pilling: ASTM D3511 (Brush Pill), Class 4.5
Acoustical Rating*: Fabric Transparency 0.90, NRC 0.70
Flame Retardancy: Cal TB 117-2013, ASTM E84 Unadhered Class A or 1
Maintenance: WS, Clean with either a water-based or solvent-based cleaning agent.
Environmental: Heavy Metal Free, PFOA/PFOS Free Stain Repellent, Recycled Content
☑️🔥🌿🌟🌟

Heather Tech

Upholstery,
Wrapped Wall,
Panel, Screens

Content: 67% Recycled
Polyester (Postconsumer) +
33% Polyester

Origin: USA

Weight: 13.8 oz/ly
Width: 54"
Pattern Repeat : None
Directional: No

Finish: Stain Repellent
Abrasion: ASTM D4157 Wyzenbeek 100,000 double rubs
Breaking Strength: ASTM D5034 Warp 294 lbf, Fill 219 lbf
Seam Slippage: ASTM D4034 Warp 182 lbf, Fill 154 lbf
Colorfastness to Light: AATCC 16, Grade 4 at 40 Hours
Colorfastness to Crocking: AATCC 8, Wet Class 4, Dry Class 4
Pilling: ASTM D3511 (Brush Pill), Class 4.5
Acoustical Rating*: Fabric Transparency 0.90, NRC 0.70
Flame Retardancy: Cal TB 117-2013, ASTM E84 Unadhered Class A or 1
Maintenance: WS, Clean with either a water-based or solvent-based cleaning agent.
Environmental: Heavy Metal Free, PFOA / PFOS Free Stain Repellent, Recycled Content
☑️🔥🌿🌟🌟

Percept

Upholstery,
Wrapped Wall,
Panel, Screens

Content: 81% Recycled
Polyester (Postconsumer) +
19% Polyester

Origin: USA

Weight: 18.5 ± 0.5 oz/ly
Width: 54"
Pattern Repeat: None
Directional: No

Finish: Stain Repellent
Abrasion: ASTM D4157 Wyzenbeek 95,000 double rubs
Breaking Strength: ASTM D5034 Warp 404 lbf, Fill 372 lbf
Seam Slippage: ASTM D4034 Warp 159 lbf, Fill 179 lbf
Colorfastness to Light: AATCC 16, Grade 4 at 40 Hours
Colorfastness to Crocking: AATCC 8, Wet Class 4, Dry Class 4
Pilling: ASTM D3511 (Brush Pill) Class 5
Acoustical Rating*: Fabric Transparency 0.85, NRC 0.75
Flame Retardancy: Cal TB 117-2013, ASTM E84 Unadhered Class A or 1
Maintenance: WS, Clean with either a water-based or solvent-based cleaning agent.
Environmental: PFOA/PFOS Free Stain Repellent, Recycled Content
☑️🔥🌿🌟🌟

*Acoustical rating tested to
ISO 10534-2 standards

Dyes lots may vary slightly from
samples shown.

All samples shown off the bolt.

Canada
877.705.LUUM
luumtextiles.ca

USA
877.705.LUUM
luumtextiles.com

International
919.464.2922
luumtextiles.com

cdn/us/int/05/20

© Luum™ 2020, all rights reserved.

* ,™ Trademarks used under license by Luum™, Actuate, Digi Tweed, Heather Tech, Percept

*Certification marks owned by the Association for Contract Textiles.

SC-350-COLOR KIT