

**Name**  
Macrotweed

**Designer**  
Suzanne Tick

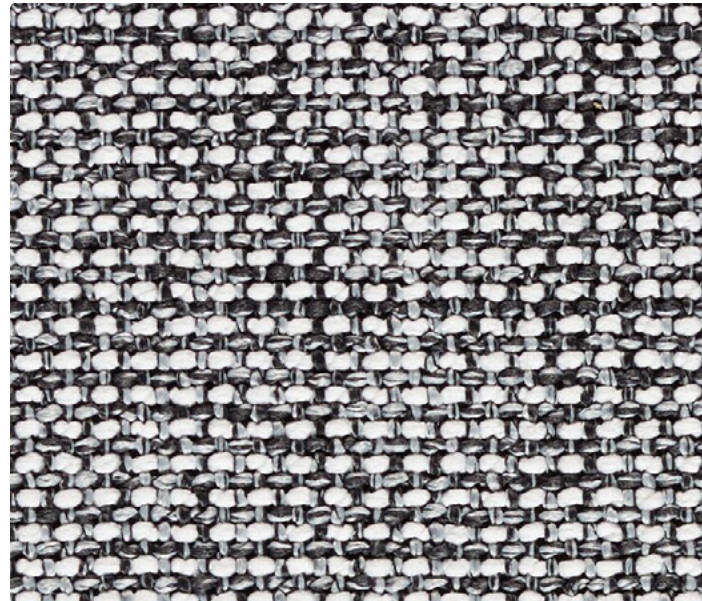
**Style No.**  
4072

**Use**  
Upholstery

**Content**  
100% Polyester

**Abrasion** Wyzenbeek  
100,000 double rubs

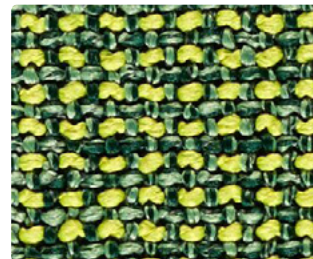
**Special Characteristics**  
Bleach cleanable



White Ash 4072-03



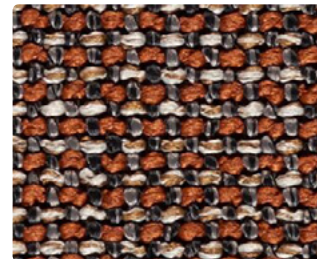
Goldstone 4072-06



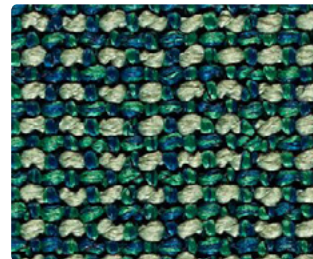
Reverb 4072-07



Petrify 4072-04



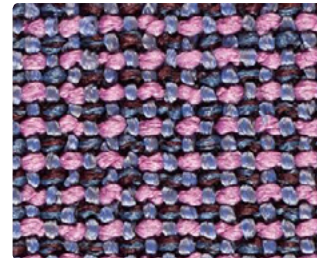
Amber 4072-05



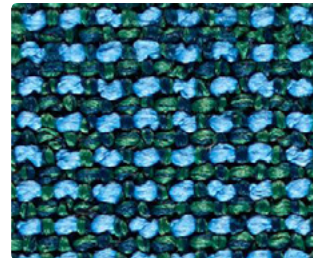
Cameo 4072-08



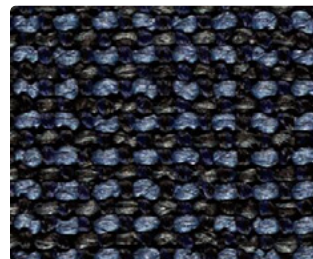
Lode 4072-02



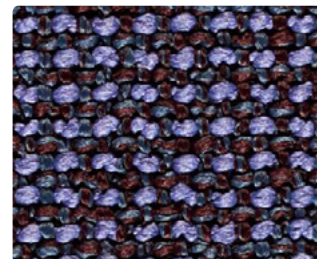
Chimeric 4072-11



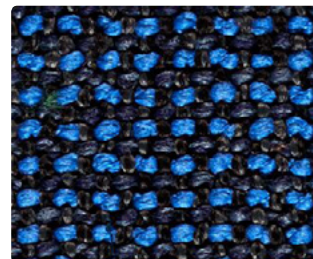
Watershed 4072-09



Ink 4072-01



Anthropocene 4072-12



Galena 4072-10

**Name** \_\_\_\_\_ **Macrotweed**  
**Style No.** \_\_\_\_\_ **4072**

**Designer** Suzanne Tick

**Specification**  
**Use:** Upholstery  
**Content:** 100% Polyester  
**Weight:** 28.45 oz per linear yard  
**Width:** 55"  
**Pattern Repeat:** None  
**Directional:** No

**Finish** Acrylic Backing

**Performance**  
**Abrasion:** ASTM D4157 Wyzenbeek 100,000 double rubs  
**Breaking Strength:** ASTM D5034 Warp 668.8 lbf, Fill 679.4 lbf  
**Seam Slippage:** ASTM D4034 Warp 77.2 lbf, Fill 83.6 lbf  
**Colorfastness to Light:** AATCC 16, Grade 4-5 at 40 Hours  
**Colorfastness to Crocking:** AATCC 8, Wet Class 5, Dry Class 5  
**Pilling:** ASTM D3511 (Brush Pill), Class 5

**Flame Retardancy** Cal TB 117-2013

**Maintenance** WS, Clean with either a water-based or solvent-based cleaning agent.  
Bleach Cleanable: 9% (10:1 Ratio), wipe with water after solution.

**Origin** Italy

Dye lots may vary slightly from samples shown. Samples shown off the bolt.



**Canada**  
877.705.LUUM  
luumtextiles.ca

**USA**  
877.705.LUUM  
luumtextiles.com

**International**  
919.464.2922  
luumtextiles.com

cdn/us/int/05-19

© Luum™ 2019, all rights reserved.

\*,™ Trademarks used under license by Luum™, Macrotweed™

\*Certification Marks owned by the Association for Contract Textiles, Inc.

U7 - SC-305-4072