

Name

Juxtapose

Designer

Suzanne Tick

Style No.

7020

Collection

Organized Complexity

Use

Direct Glue
Wrapped Wall

Content

70% Recycled Polyester +
30% Polyester

Environmental

Recycled Content
Heavy Metal Free
REACH Regulation
Compliant



Yakisugi 7020-02



Lacquer 7020-03



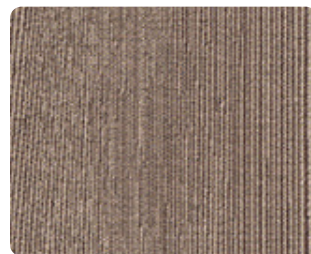
Lumber 7020-05



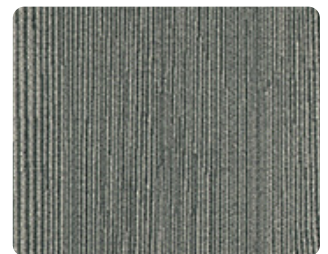
Yakisugi 7020-02



Timber 7020-04



Rosewood 7020-06



Greenheart 7020-01

LUUM

Name _____

Juxtapose

Style No. _____

7020

Designer

Suzanne Tick

Specification

Use: Direct Glue/Wrapped Wall

Content: 70% Recycled Polyester (Post Consumer) + 30% Polyester

Weight: 14 oz per linear yard

Width: 56.25"

Pattern Repeat: 56.25" Horizontal, 50.13" Vertical

Directional: Yes

Finish

Acrylic Backing

Performance

Breaking Strength: ASTM D5034 Warp 384 lbf, Fill 281 lbf

Colorfastness to Light: AATCC 16, Grade 4 at 40 Hours

Colorfastness to Crocking: AATCC 8, Wet Class 3, Dry Class 4

Flame Retardancy

ASTM E84 Adhered Class A or 1

ASTM E84 Unadhered Class A or 1

Maintenance

W, Clean with a water-based cleaning agent. Do not use solvent products.

Bleach Cleanable: 9% (10:1 Ratio), wipe with water after solution.

Environmental

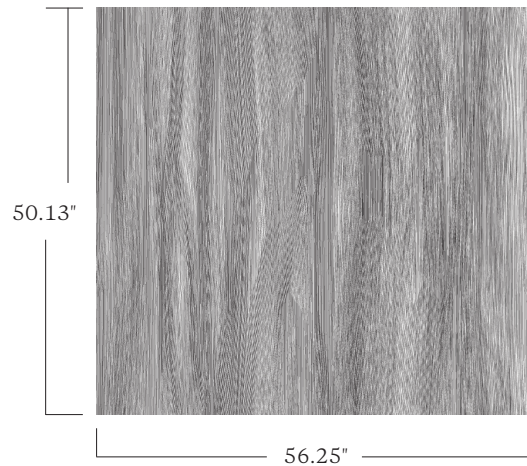
Recycled Content

Heavy Metal Free

REACH Regulation Compliant

Origin

USA



Graphic shows one full repeat.

Canada

877.705.LUUM
luumtextiles.ca

USA

877.705.LUUM
luumtextiles.com

International

919.464.2922
luumtextiles.com

cdn/us/int/09-23

© Luum™ 2023, all rights reserved.

®,™ Trademarks used under license by Luum™, Juxtapose™

*Certification Marks owned by the Association for Contract Textiles, Inc.
Multiple factors affect fabric durability and appearance retention.

A4-SC-305-7020