

Name

Duo Chrome

Designer

Suzanne Tick

Style No.

4076

Use

Reversible Upholstery
Wrapped Wall/Panel

Content

100% Polyester

Abrasion

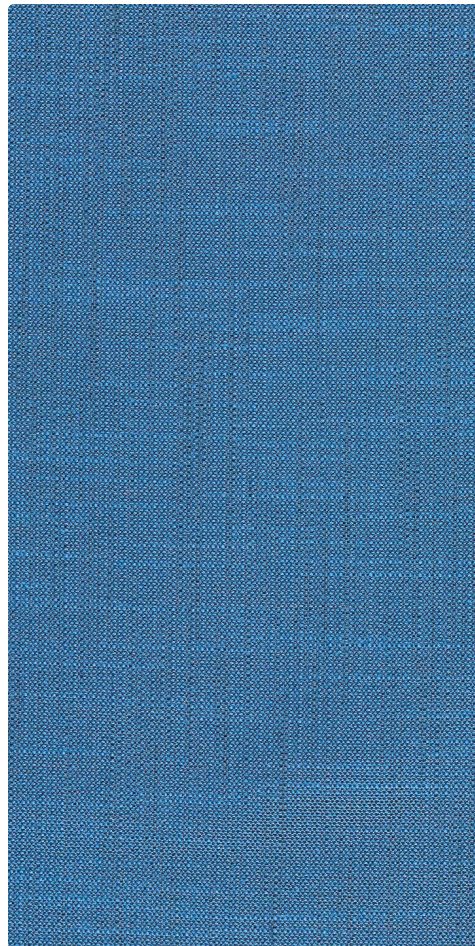
Wyzenbeek
100,000 double rubs

Special
Characteristics

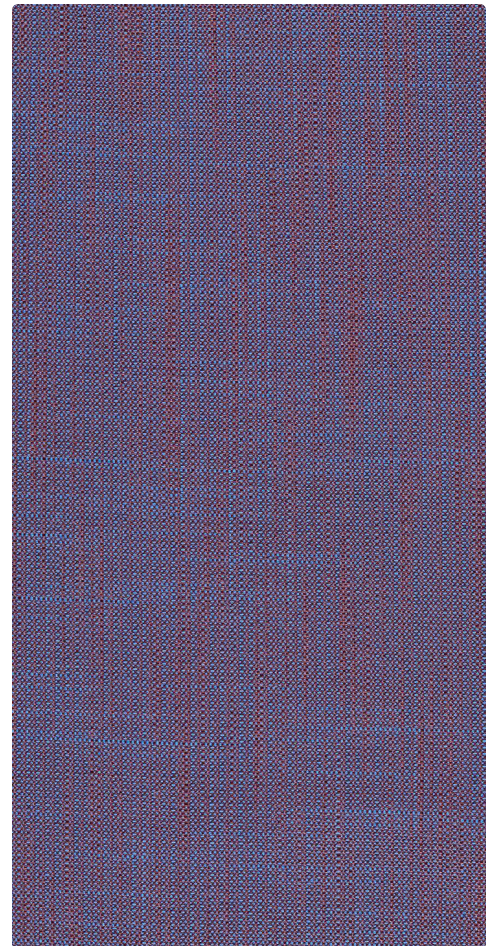
Bleach Cleanable

Environmental

Heavy Metal Free
REACH Regulation
Compliant



Aquamarine 4076-12



Boysenberry 4076-15



Canvas 4076-05



Platinum 4076-04



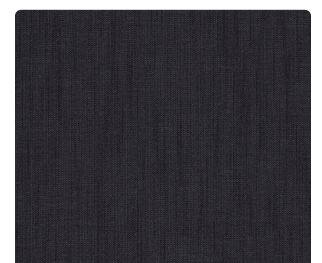
Charcoal 4076-02



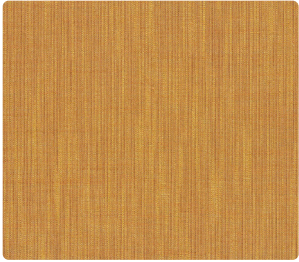
Silver Elm 4076-10



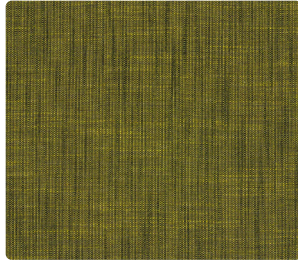
Black Pepper 4076-03



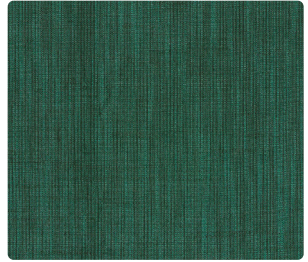
Ebony 4076-01



Goldenrod 4076-07



Citron 4076-08



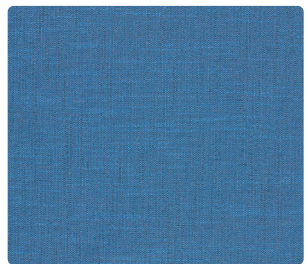
Emerald 4076-09



Copper 4076-06



Dusty Plum 4076-17



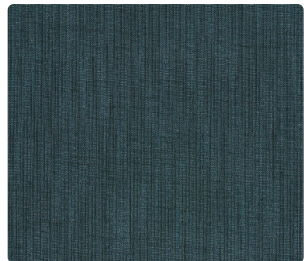
Aquamarine 4076-12



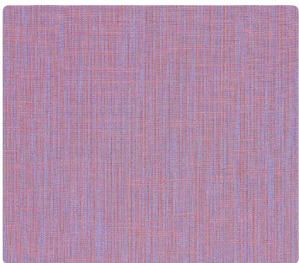
Persimmon 4076-20



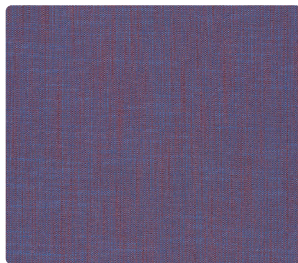
Red Oxide 4076-19



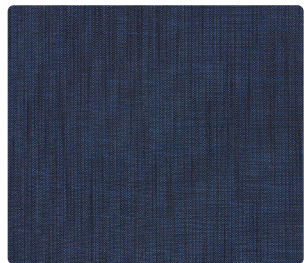
Evergreen 4076-11



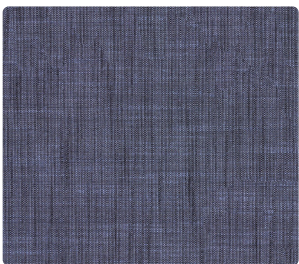
Hydrangea 4076-16



Boysenberry 4076-15



Navy 4076-13



Iris 4076-14



Oxblood 4076-18

Name **Duo Chrome**

Style No. **4076**

Designer Suzanne Tick

Specification
Use: Upholstery, Wrapped Wall/Panel
Content: 100% Polyester
Weight: 30.3 oz per linear yard
Width: 55"
Pattern Repeat: None
Directional: No

Finish None

Performance
Abrasion: ASTM D4157 Wyzenbeek 100,000 double rubs
Breaking Strength: ASTM D5034 Warp 790.1 lbf, Fill 424.6 lbf
Seam Slippage: ASTM D4034 Warp 44.9 lbf, Fill 67.2 lbf
Colorfastness to Light: AATCC 16, Grade 4-5 at 40 Hours
Colorfastness to Crocking: AATCC 8, Wet Class 4-5, Dry Class 5
Pilling: ASTM D4970 (Martindale), Class 5

Flame Retardancy Cal TB 117-2013

Maintenance
W, Clean with a water-based cleaning agent. Do not use solvent products.
Bleach Cleanable: 9% (10:1 Ratio), wipe with water after solution.

Reversible This product is double sided, please take care during order placement and upholstery.

Environmental
Heavy Metal Free
REACH Regulation Compliant

Origin Italy

Dye lots may vary slightly from samples shown. Samples shown off the bolt.



Canada
877.705.LUUM
luumtextiles.ca

USA
877.705.LUUM
luumtextiles.com

International
919.464.2922
luumtextiles.com

cdn/us/int/09-19

© Luum™ 2019, all rights reserved.

*,™ Trademarks used under license by Luum™, Duo Chrome™

*Certification Marks owned by the Association for Contract Textiles, Inc.

U6-SC-305-4076