

Name
Complect

Designer
Suzanne Tick

Style No.
1032

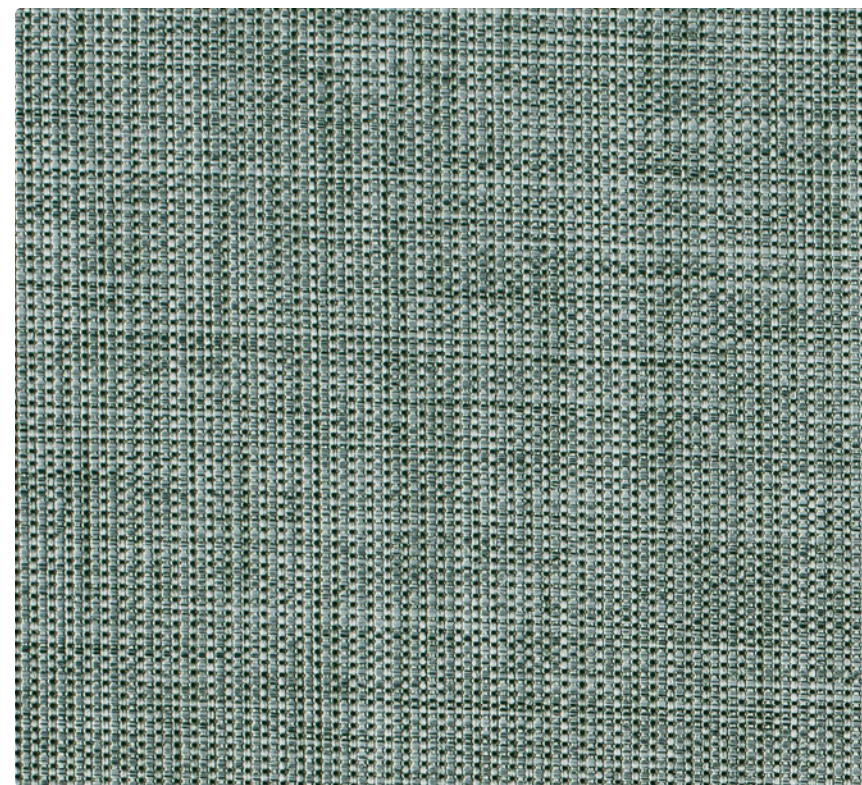
Collection
Shared Ground

Use
Upholstery
Wrapped Wall
Panel
Screens

Content
100% Recycled Polyester

Abrasion
Wyzenbeek
75,000 double rubs

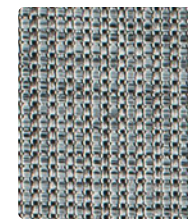
Environmental
Recycled Content
Heavy Metal Free
PFOA/PFOS Free
Stain Repellent



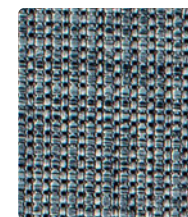
Agave 1032-19



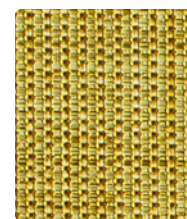
Cumulus 1032-05



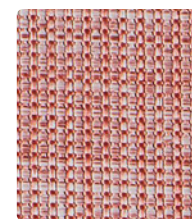
Silverleaf 1032-03



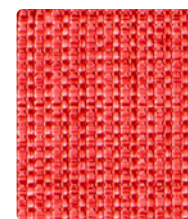
Quarry 1032-02



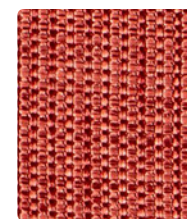
Yolk 1032-06



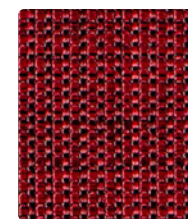
Apricot 1032-07



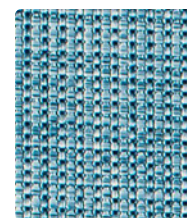
Highlighter Pink
1032-08



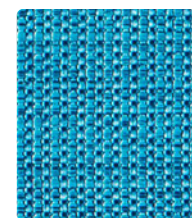
Autumn 1032-10



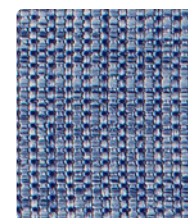
Deep Crimson 1032-09



Winter 1032-15



Blue Ice 1032-14



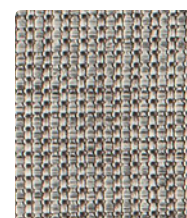
Opaline 1032-11



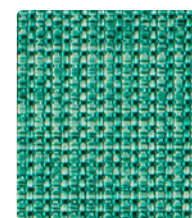
Reservoir 1032-12



Gentian 1032-13



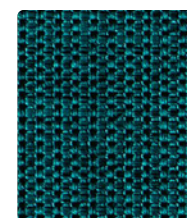
Jute 1032-04



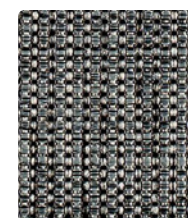
Turquoise 1032-17



Okra 1032-18



Boreal 1032-16



Melanite 1032-01

Name **Complect**

Style No. **1032**

Designer Suzanne Tick

Specification
Use: Upholstery/Wrapped Wall/Panel/Screens
Content: 100% Recycled Polyester (Postconsumer)
Weight: 15.88 oz per linear yard
Width: 54"
Pattern Repeat: None
Directional: Yes

Finish Stain Repellent

Performance
Abrasion: ASTM D4157 Wyzenbeek 75,000 double rubs
Breaking Strength: ASTM D5034 Warp 100 lbf, Fill 93 lbf
Seam Slippage: ASTM D4034 Warp 34 lbf, Fill 85 lbf
Colorfastness to Light: AATCC 16, Grade 4 at 40 Hours
Colorfastness to Crocking: AATCC 8, Wet Class 4, Dry Class 4
Pilling: ASTM D3511 (Brush Pill), Class 4

Acoustical Rating
Fabric Transparency 0.65, NRC 0.60 tested to ISO 10534-2 standards

Flame Retardancy
Cal TB 117-2013, UFAC Class 1, NFPA 260
ASTM E84 Unadhered Class A

Maintenance
WS, Clean with either a water-based or solvent-based cleaning agent.

Environmental
Recycled Content
Heavy Metal Free
PFOA/PFOS Free Stain Repellent

Origin Mexico



Dye lots may vary slightly from samples shown. Samples shown off the bolt.

Canada
877.705.LUUM
luumtextiles.ca

USA
877.705.LUUM
luumtextiles.com

International
919.464.2922
luumtextiles.com

cdn/us/int/02-22

© Luum™ 2022, all rights reserved.

*™ Trademarks used under license by Luum™, Complect™

*Certification Marks owned by the Association for Contract Textiles, Inc.

U2-P2-A2-SC-305-1032

