

Name
Top Coat

Designer
Suzanne Tick

Style No.
4083

Use
Upholstery

Content
Face: 100% Silicone
Back: 100% Polyester
Knit

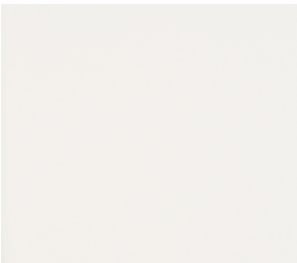
Abrasion
Wyzenbeek
100,000 double rubs**

Special Characteristics
Bleach Cleanable

Environmental
Chemical Finish Free
Heavy Metal Free
Complies with California
Section 01350 VOC
Emission Standards



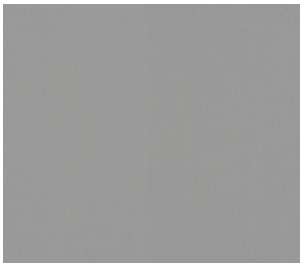
Indigo Ink 4083-15



Shell 4083-01



Glaze 4083-02



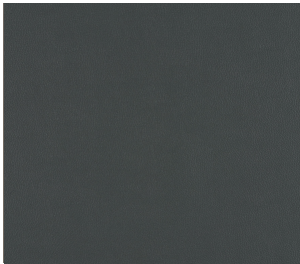
Chromate 4083-03



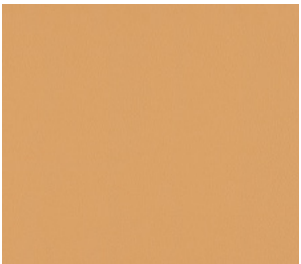
Stoneware 4083-04



Seal 4083-16



Weld 4083-17



Toast 4083-10



Polish 4083-11



Frit 4083-12



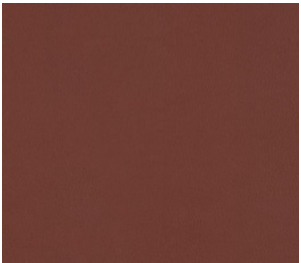
Claycast 4083-09



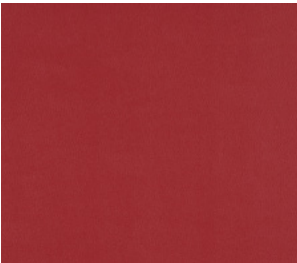
Heat Set 4083-08



Shellac 4083-13



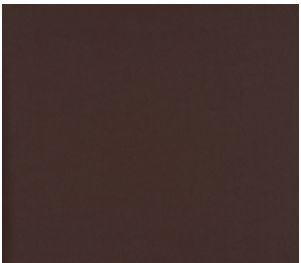
Braze 4083-06



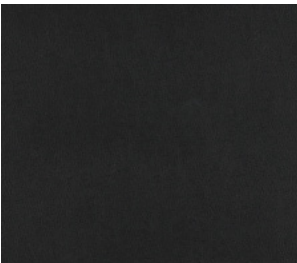
Conduct 4083-07



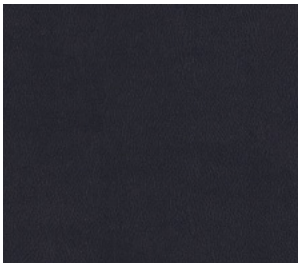
Dip 4083-14



Aniline 4083-05



Black Oxide 4083-18



Indigo Ink 4083-15

Top Coat



Top Coat
by Luum

Engineered with the environment at heart, both built and natural, Top Coat is a performance faux leather made from 100% silicone. Without the presence of additives, silicone inherently rejects microbiological growth, making it widely applicable in corporate, education, healthcare and hospitality settings. In addition, Top Coat has increased elasticity and subtle texture, with a color palette range that encompasses deep colors, synthetic brights and evocative neutrals. PVC-free silicone supports indoor air quality, while its performance capabilities are expansive: inherently ink and denim resistant, anti-microbial, anti-fungal and bleach and viricide cleanable.

Name	Top Coat
Style No.	4083
Designer	Suzanne Tick
Specification	Use: Upholstery Content: <i>Face:</i> 100% Silicone <i>Back:</i> 100% Polyester Knit Weight: 25.5 oz per linear yard Width: 54" Pattern Repeat: None Directional: No
Finish	Inherently ink and denim resistant. Silicone, inherently, does not support microbiological growth.
Performance	Abrasion: ASTM D4157 Wyzenbeek 100,000+ double rubs** Adhesion of Coating: ASTM D751 Coating Cannot Be Removed Tear Strength: ASTM D2261 Warp 12.1 lbf, Fill 20.7 lbf Colorfastness to Light: AATCC 16, Grade 5 at 200 Hours Colorfastness to Crocking: AATCC 8, Wet Class 5, Dry Class 5
Flame Retardancy	Cal TB 117-2013, UFAC Class 1, NFPA 260
Maintenance	WS, Clean with either a water-based or solvent-based cleaning agent. Bleach Cleanable: 20% (4:1 Ratio), wipe with water after solution. For a list of approved cleaning products, please visit the resources section on the Luum website at www.luumtextiles.com
Environmental	Chemical Finish Free Heavy Metal Free Complies with California Section 01350 VOC Emission Standards.
Origin	Korea
	Dye lots may vary slightly from samples shown. Samples shown off the bolt.



Canada	USA	International
877.705.LUUM luumtextiles.ca	877.705.LUUM luumtextiles.com	919.464.2922 luumtextiles.com

[cdn/us/int/01-20](#)

© Luum™ 2020, all rights reserved.
*,™ Trademarks used under license by Luum™, Top Coat™
Multiple factors affect fabric durability and appearance retention, including end-user application and proper maintenance.
**Wyzenbeek results above 100,000 double rubs have not been shown to be a reliable indicator of increased lifespan. For test report showing full results, please contact customerservice@luumtextiles.com.
*Certification Marks owned by the Association for Contract Textiles, Inc.

SC-305-4083