

Name

Wooly Wooly

Designer

Suzanne Tick

Style No.

4123

Collection

Twist on a Classic

Use

Upholstery

Content

32% Polyester

25% Wool

25% Acrylic

18% Cotton

Abrasion

Martindale

30,000 cycles

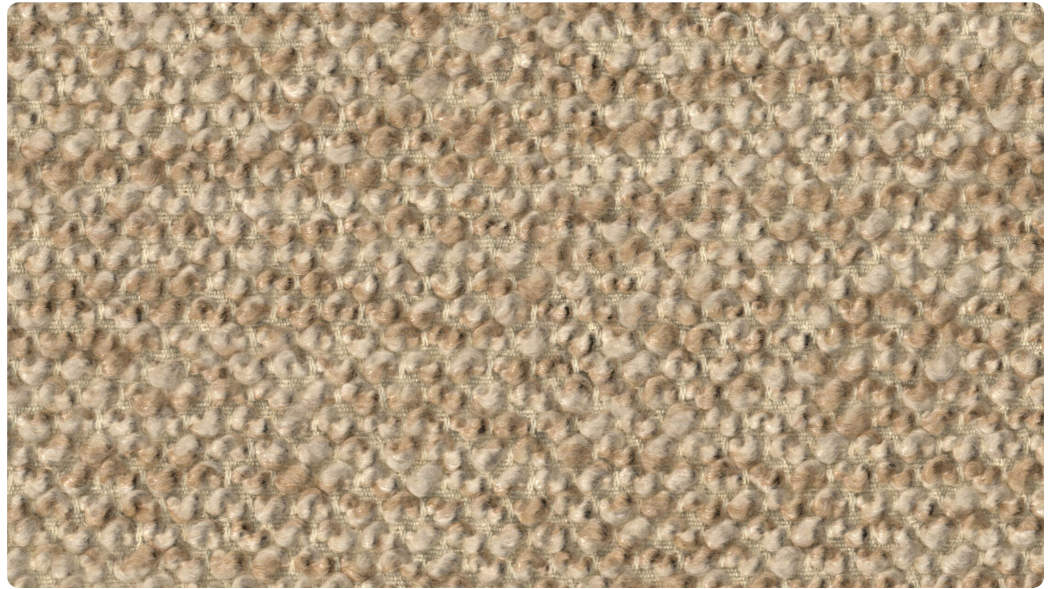
Environmental

Renewable Content

Heavy Metal Free

REACH Regulation

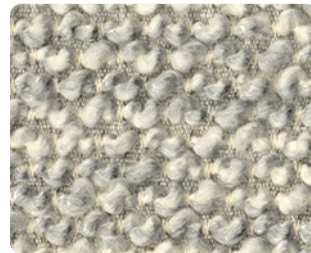
Compliant



Toasty 4123-05



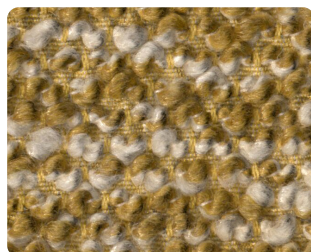
Snug 4123-06



Whisper 4123-01



Cozy 4123-04



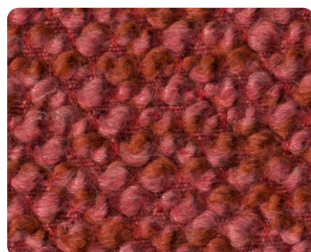
Nestle 4123-07



Hush 4123-02



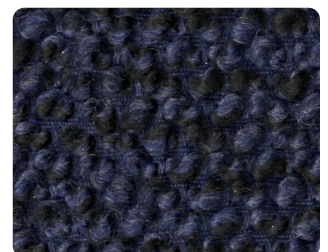
Lull 4123-03



Tenderheart 4123-08



Still 4123-09



Tranquil 4123-10

LUUM

Name



Wooly Wooly

Style No.



4123

Designer

Suzanne Tick

Specification

Use: Upholstery
Content: 32% Polyester, 25% Wool, 25% Acrylic, 18% Cotton
Weight: 23.80 oz per linear yard
Width: 55"
Pattern Repeat: None
Directional: Yes

Finish

Anti-Pilling

Performance

Abrasion: ASTM D4966 Martindale 30,000 cycles
Breaking Strength: ASTM D5034 Warp 324 lbf, Fill 228 lbf
Seam Slippage: ASTM D4034 Warp 130.5 lbf, Fill 111.5 lbf
Colorfastness to Light: AATCC 16, Grade 5 at 40 Hours
Colorfastness to Crocking: AATCC 8, Wet Class 5, Dry Class 5
Pilling: ISO 12945 (Martindale) Class 4-5

Flame Retardancy

Cal TB 117-2013

Maintenance

S, Clean with a dry cleaning or solvent-based cleaning agent.
Do not use water-based cleaning products.

Environmental

Renewable Content
Heavy Metal Free
REACH Regulation Compliant

Origin

Italy

Dye lots may vary slightly from samples shown. Samples shown off the bolt.
Wool is a natural product. Color variations are part of the natural beauty of wool and are not considered a defect.



Canada

877.705.LUUM
luumtextiles.ca

USA

877.705.LUUM
luumtextiles.com

International

919.464.2922
luumtextiles.com

cdn/us/int/05-24

© Luum™ 2024, all rights reserved.

*™ Trademarks used under license by Luum™, Wooly Wooly™

*Certification Marks owned by the Association for Contract Textiles, Inc.

U8-SC-305-4123