

Name

Rubric

Designer

Suzanne Tick

Style No.

4112

Collection

Super Natural

Use

Upholstery

Content

55% Wool +
30% Recycled Cotton +
7% Recycled Polyester +
5% Cotton +
3% Nylon

Abrasion

Wyzenbeek
100,000 double rubs

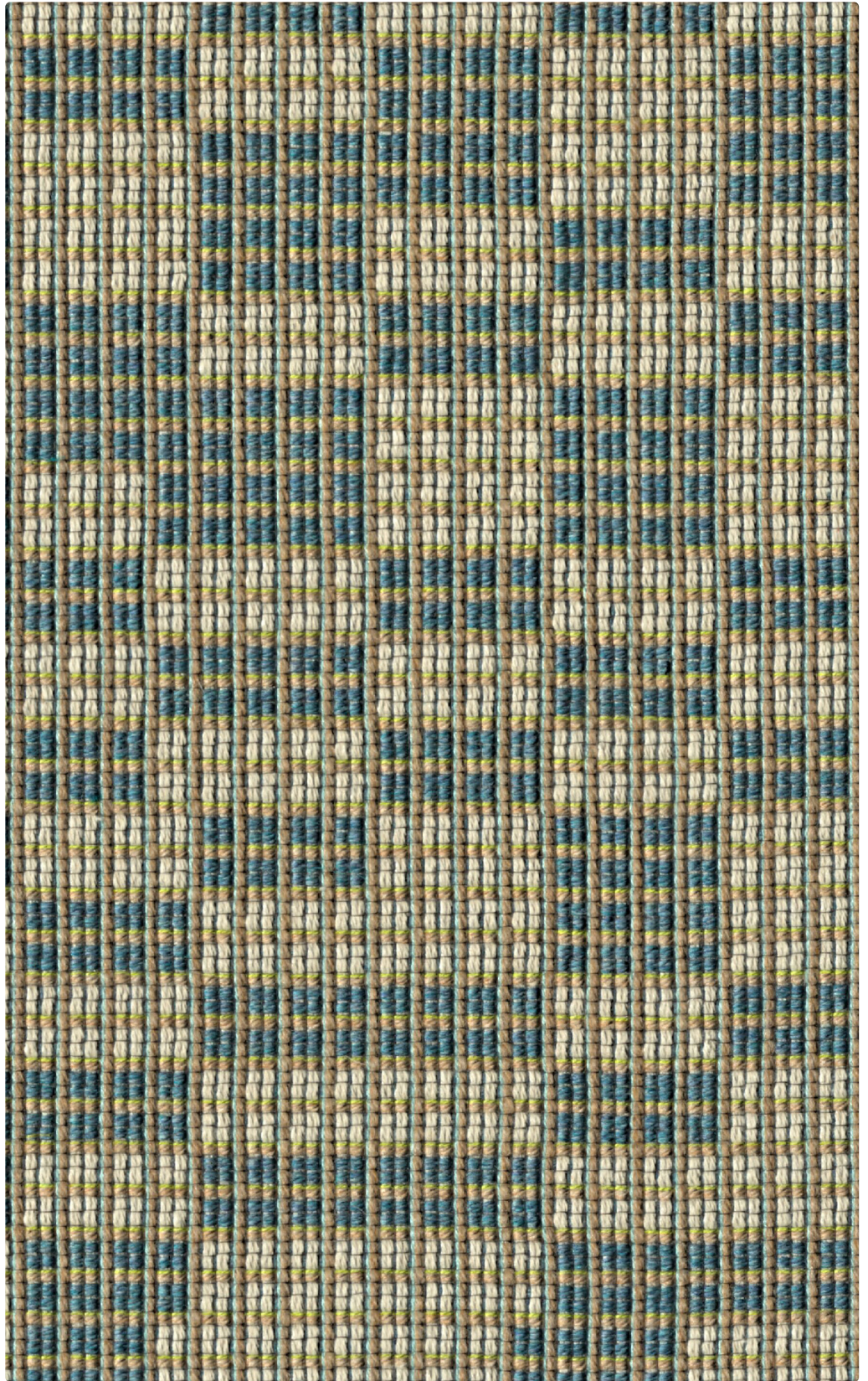
Environmental

Renewable Content
Recycled Content
Fluorine Free Stain
Repellent



Rubric by Luum

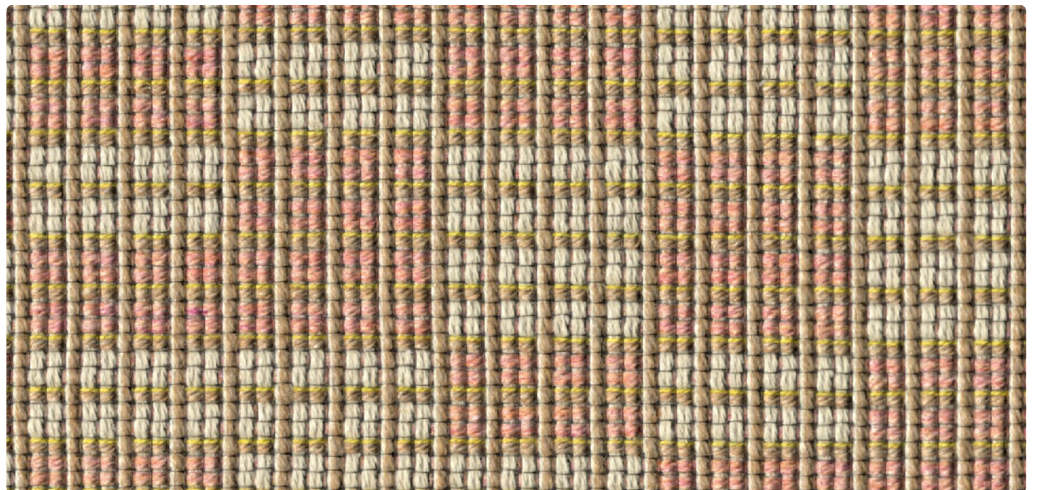
Woven on a double beam loom with natural fibers, Rubric's multicolor block pattern plays with scale and repetition, inspired by nature's cellular organization. Within its underlying grid, complex melanges of North American wool in the weft interact with a recycled cotton blend in the warp to yield dynamic movement that is forgiving on furniture. Neutral wool gridlines, consistent throughout Rubric's 6 colorways, are punctuated by vivid cotton accents to create a unique conversation between natural and bright colors. Benefiting from the inherent characteristics of its 55% domestic wool content, Rubric is a soft and breathable textile that is comfortable for all seasons and climates.



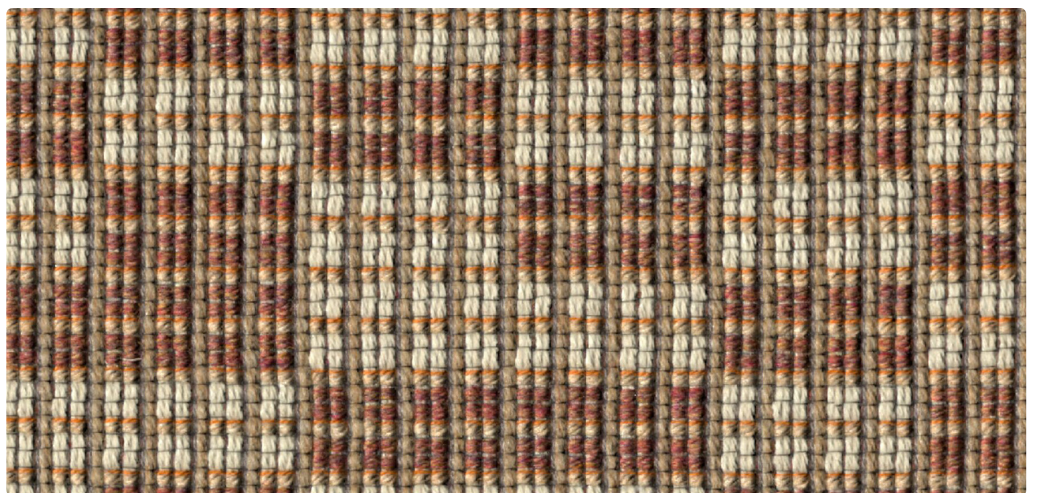
Submerged Stone 4112-04



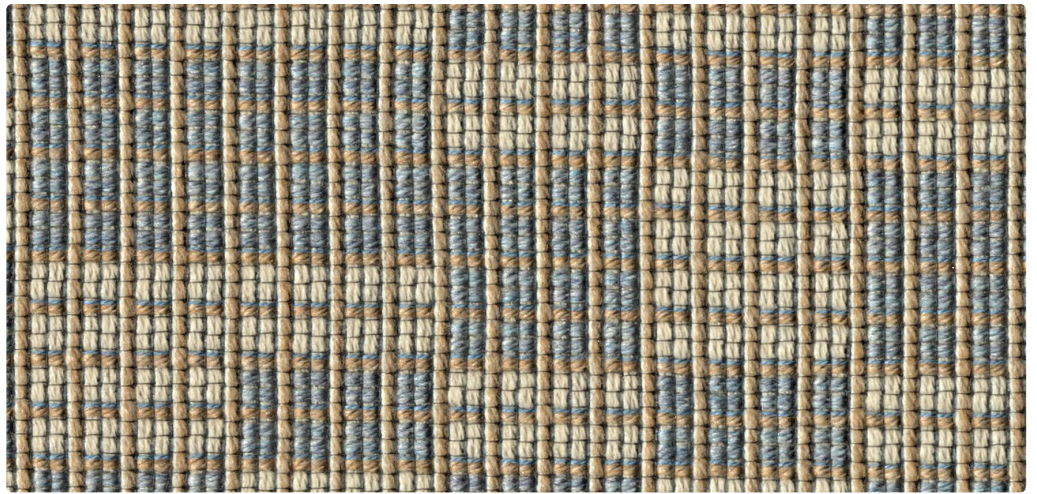
Straw Clay 4112-01



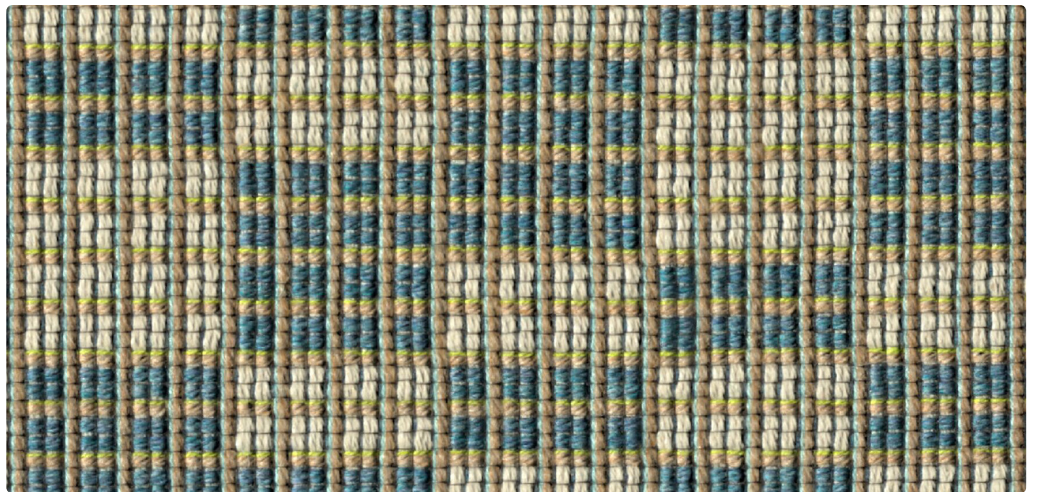
Pink Laterite 4112-02



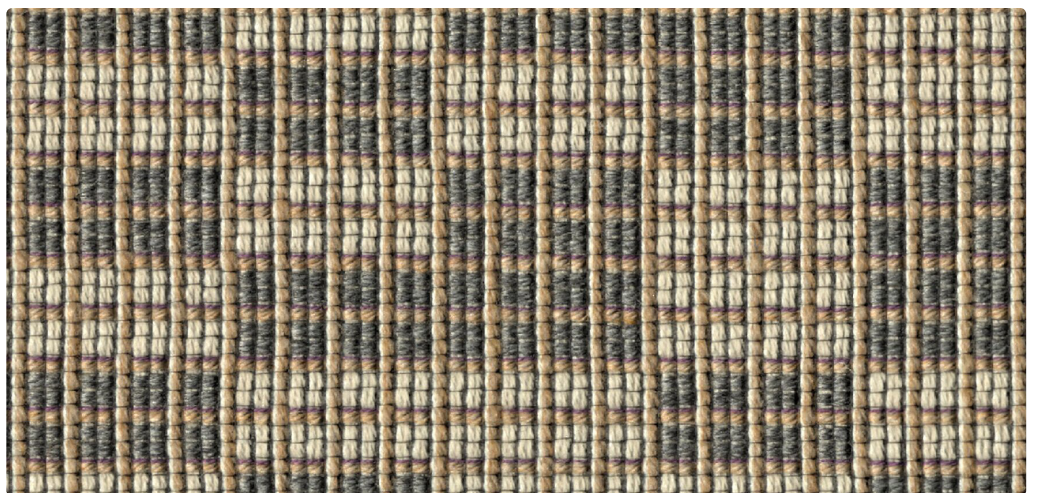
Rammed Earth 4112-03



Glass Block 4112-05

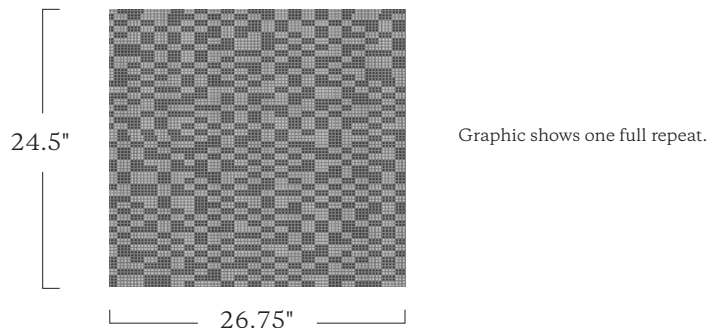


Submerged Stone 4112-04



Stacked Slate 4112-06

Name	Rubric
Style No.	4112
Designer	Suzanne Tick
Specification	Use: Upholstery Content: 55% Wool + 30% Recycled Cotton (Preconsumer) + 7% Recycled Polyester (Postconsumer) + 5% Cotton + 3% Nylon Weight: 25.08 oz per linear yard Width: 54" Pattern Repeat: 26.75" Horizontal, 24.5" Vertical Directional: Yes
Finish	Acrylic Backing Fluorine Free Stain Repellent
Performance	Abrasion: ASTM D4157 Wyzenbeek 100,000 double rubs Breaking Strength: ASTM D5034 Warp 161 lbf, Fill 147.5 lbf Seam Slippage: ASTM D4034 Warp 31 lbf, Fill 29.3 lbf Colorfastness to Light: AATCC 16, Grade 5 at 40 Hours Colorfastness to Crocking: AATCC 8, Wet Class 4, Dry Class 4-5 Pilling: ASTM D3511 (Brush Pill), Class 3
Flame Retardancy	Cal TB 117-2013
Maintenance	S, Clean with a dry cleaning or solvent-based cleaning agent. Do not use water-based cleaning products.
Environmental	Renewable Content Recycled Content Fluorine Free Stain Repellent
Origin	USA Dye lots may vary slightly from samples shown. Samples shown off the bolt. Wool is a natural product. Color variations are part of the natural beauty of wool and are not considered a defect.



Canada
877.705.LUUM
luumtextiles.ca

USA
877.705.LUUM
luumtextiles.com

International
919.464.2922
luumtextiles.com

cdn/us/int/2023

© Luum™ 2023, all rights reserved.

*™ Trademarks used under license by Luum™, Rubric™

*Certification Marks owned by the Association for Contract Textiles, Inc.

Abrasion test results exceeding ACT Performance Guidelines are not an indicator of product lifespan.

Multiple factors affect fabric durability and appearance retention.

U11-SC-305-4112