

Name

Stratiform

Designer

Suzanne Tick

Style No.

1030

Use

Wrapped Wall
Panel

Content

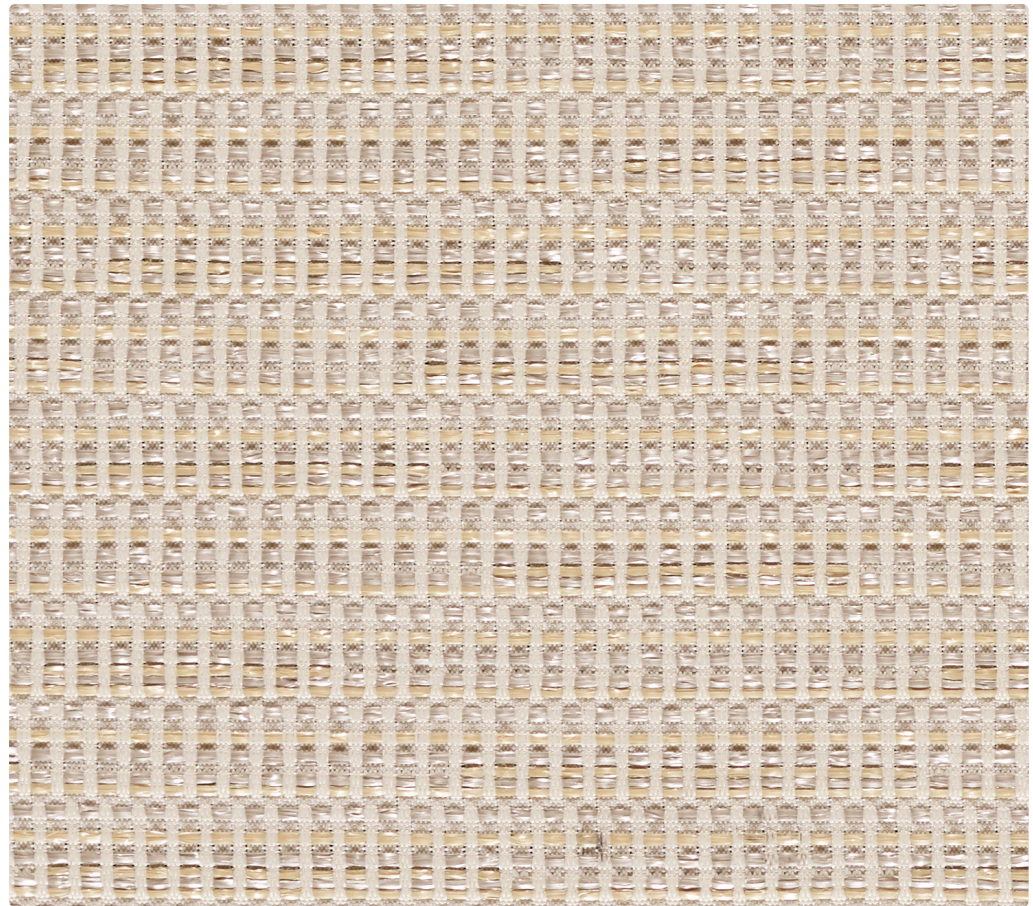
52% Recycled Polyester+
48% Polypropylene

Special Characteristics

Bleach Cleanable

Envorionmental

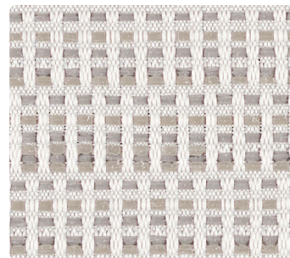
Recycled Content



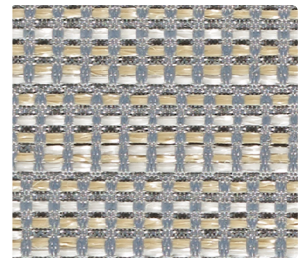
Limestone 1030-02



Calcify 1030-01



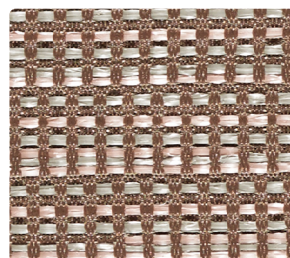
Moraine 1030-04



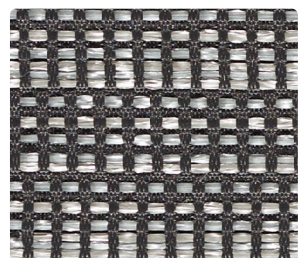
Glacial 1030-05



Sandhill 1030-03



Bedrock 1030-06



Flint 1030-07

Name

Stratiform

Style No.

1030

Designer

Suzanne Tick

Specification

Use: Wrapped Wall/Panel
Content: 52% Recycled Polyester (43% Preconsumer, 9% Postconsumer) + 48% Polypropylene
Weight: 15 ± 1 oz per linear yard
Width: 66"
Pattern Repeat: Horizontal 7.75" Vertical 4" Random Match
Directional: Yes

Finish

Polyester Immersion Backing

Performance

Breaking Strength: ASTM D5034 Warp 317 lbf, Fill 302 lbf
Colorfastness to Light: AATCC 16, Grade 4 at 40 Hours
Colorfastness to Crocking: AATCC 8, Wet Class 3, Dry Class 4

Acoustical Rating

Fabric Transparency: 0.85, NRC 0.65 tested to ISO 10534-2 standards

Flame Retardancy

ASTM E84 Unadhered Class A or 1

Maintenance

WS, Clean with either a water-based or solvent-based cleaning agent.
Bleach Cleanable: 10% (9:1 Ratio), wipe with water after solution.

Environmental

Recycled Content

Origin

USA

Dye lots may vary slightly from samples shown. Samples shown off the bolt.



Canada

877.705.LUUM
luumtextiles.ca

USA

877.705.LUUM
luumtextiles.com

International

919.464.2922
luumtextiles.com

cdn/us/int/09-20

© Luum™ 2020, all rights reserved.
*,™ Trademarks used under license by Luum™, Stratiform™

*Certification Marks owned by the Association for Contract Textiles, Inc.

A2-P2-SC-305-1030