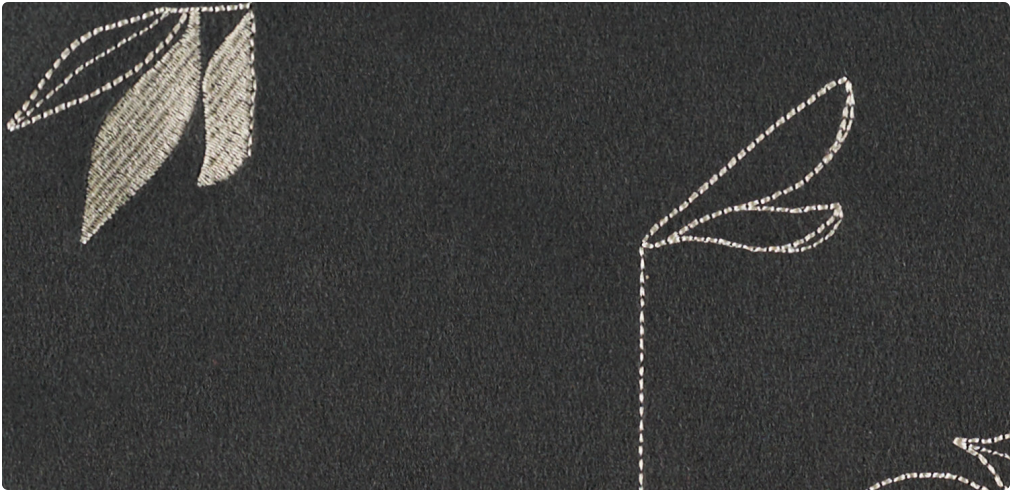
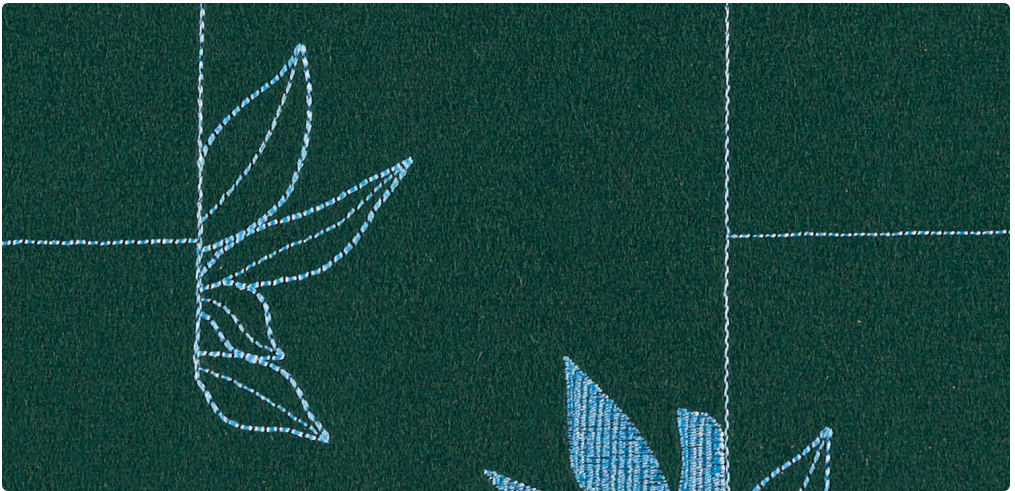


## Second Nature by Luum

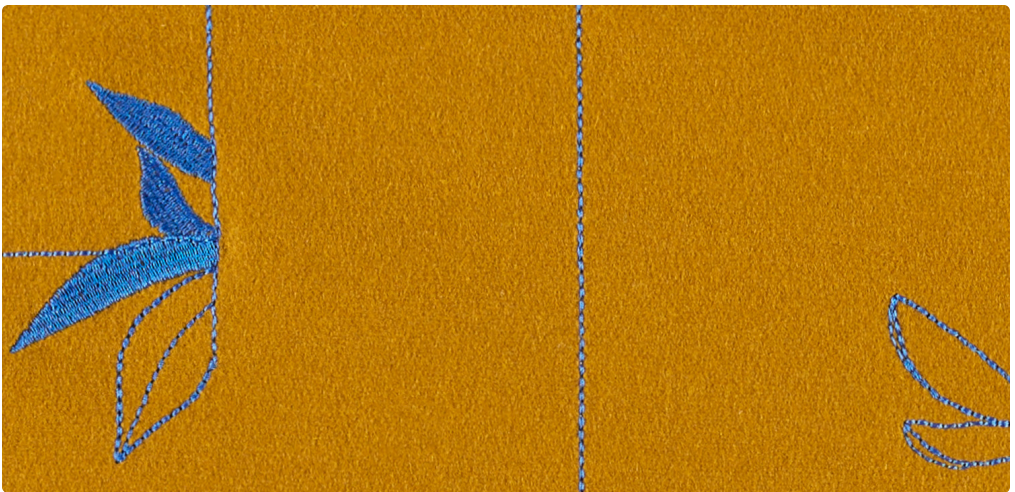
Even through the smallest crack in the pavement, nature finds a way to break through. In Second Nature, Luum's first contemporary floral pattern, a botanical motif emerges from an architectural stitched pattern, expressing nature's ability to regenerate and challenging our perceptions of traditional floral patterns. Using the wool-blend solid *Construct* as a base cloth, Second Nature's linear stitching refers to structure while transforming the surface of the fabric, inviting us to reimagine our relationship to the natural environment.



Peppervine 4080-06



Moonflower 4080-01



Muscadine 4080-02

**Name**

Second Nature

**Designer**

Suzanne Tick

**Style No.**

4080

**Use**

Upholstery

**Content**

78% Wool +  
21% Nylon +  
1% Polyester

**Abrasion**

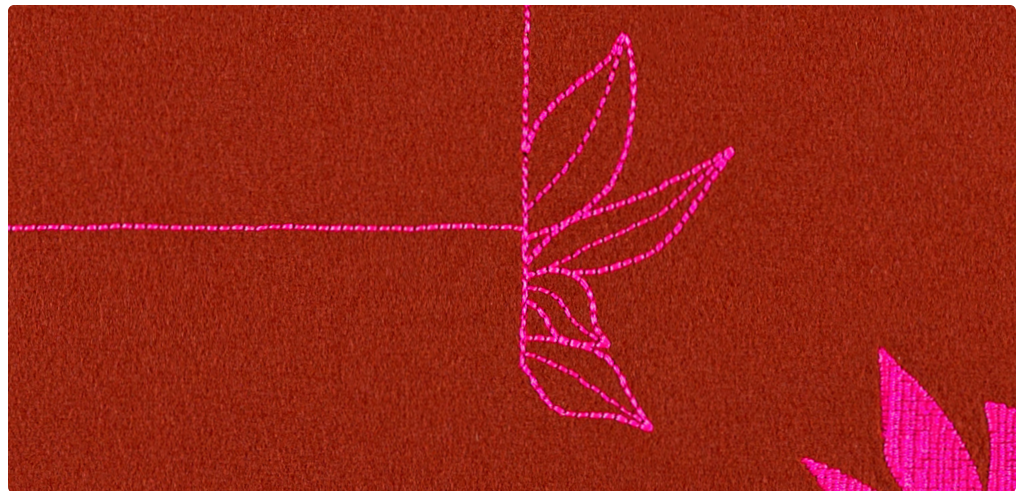
Martindale  
100,000 cycles

**Environmental**

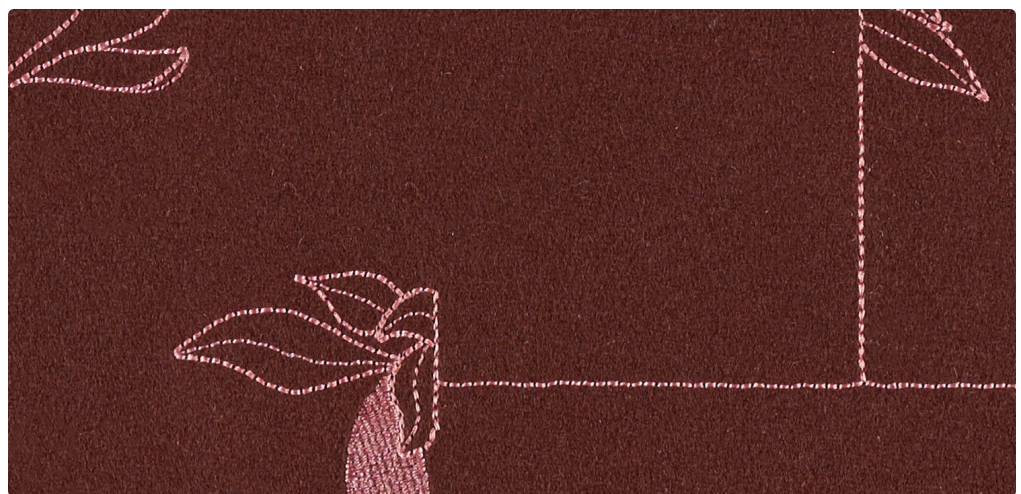
Renewable Content



Chaparral 4080-03



Bougainvillea 4080-04



Nightshade 4080-05

Name **Second Nature**

Style No. **4080**

Designer Suzanne Tick

Specification  
Use: Upholstery  
Content: 78% Wool + 21% Nylon + 1% Polyester  
Weight: 19.15 oz per linear yard  
Width: 54"  
Pattern Repeat: Horizontal 27" Vertical 14.5" Random Match  
Directional: No

Finish None

Performance  
Abrasion: ASTM D4966 Martindale 100,000 cycles  
Breaking Strength: ASTM D5034 Warp 103.7 lbf, Fill 65.4 lbf  
Seam Slippage: ASTM D4034 Warp 76.1 lbf, Fill 80 lbf  
Colorfastness to Light: AATCC 16, Grade 5 at 40 Hours  
Colorfastness to Crocking: AATCC 8, Wet Class 5, Dry Class 5  
Pilling: ISO 12945 (Martindale), Class 3

Flame Retardancy Cal TB 117-2013, UFAC Class 1, NFPA 260

Maintenance S, Clean with a dry cleaning or solvent-based cleaning agent.  
Do not use water-based cleaning products.

Environmental Renewable Content

Origin Base: Italy  
Stitching: USA

Wool is a natural product.  
Color variations are part of the natural beauty of wool and are not considered a defect.  
Dye lots may vary slightly from samples shown. Samples shown off the bolt.



#### Customization

**Canada**  
877.705.LUUM  
luumtextiles.ca

**USA**  
877.705.LUUM  
luumtextiles.com

**International**  
919.464.2922  
luumtextiles.com

cdn/us/int/01-20

© Luum™ 2020, all rights reserved.

\*,™ Trademarks used under license by Luum™, Second Nature™

\*Certification Marks owned by the Association for Contract Textiles, Inc.

U16-SC-305-4080