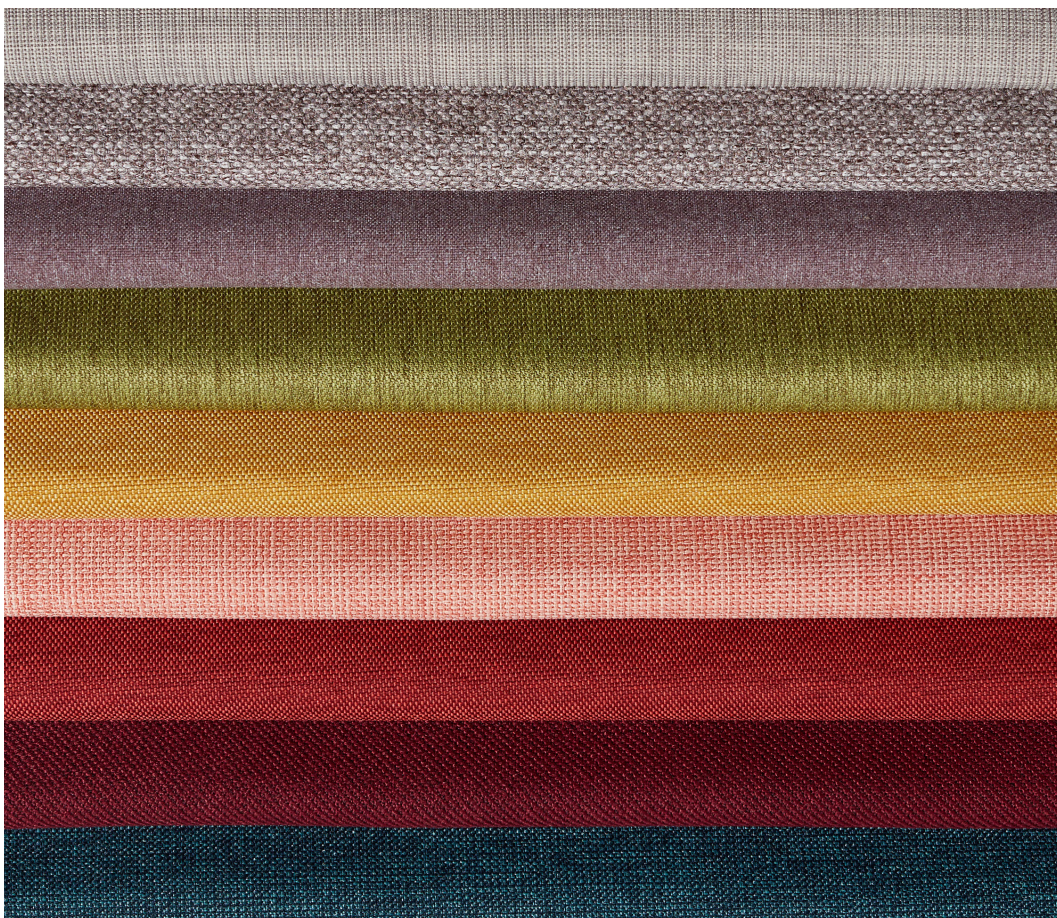


# LUUM



## Color Kit 2.0 By Luum

Utilizing recycled and biodegradable polyester fibers, Color Kit 2.0 is a toolkit of eight sustainable, North American made textures in a range of 157 colorways. Designed from the fiber level, *Actuate*, *Complect*, *Crossgrain*, *Digi Tweed*, *Ecotone*, *Graviton*, *Heather Tech* and *Percept* offer a variety of luster levels, texture options and colorways that coordinate together and with large scale patterns across all surfaces of the interior on upholstery, panels, screens and acoustical wrapped walls.



**Name**

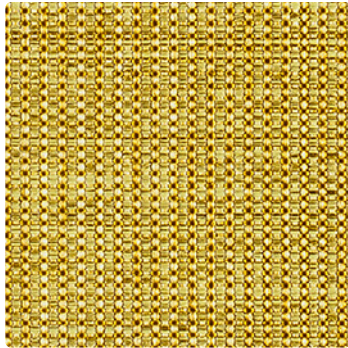
Actuate  
Complect  
Crossgrain  
Digi Tweed  
Ecotone  
Graviton  
Heather Tech  
Percept

**Designer**

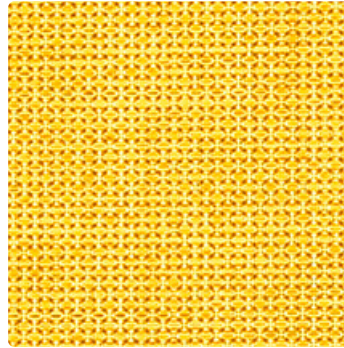
Suzanne Tick

**Use**

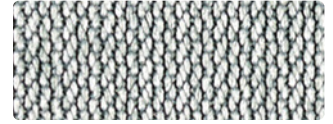
Upholstery  
Wrapped Wall  
Panel  
Screens



Complect  
Yolk 1032-06



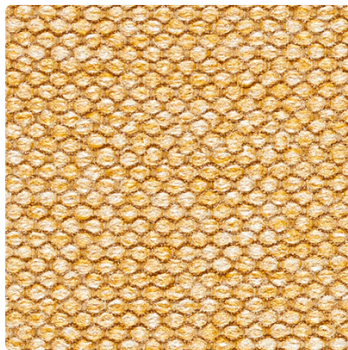
Graviton  
Luminous Flux 1034-07



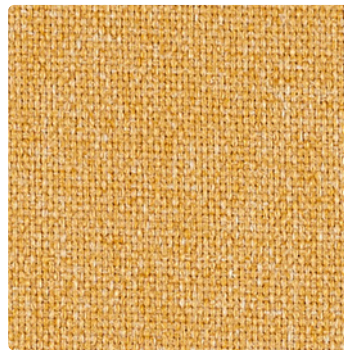
Percept  
Pristine 4040 - 01



Digi Tweed  
Topaz Tweed 4058 - 02



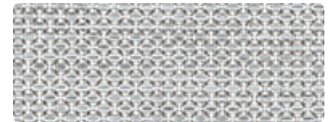
Digi Tweed  
Sundew Tweed 4058-12



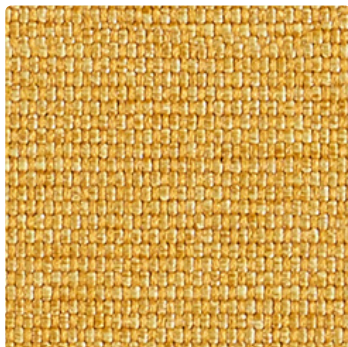
Heather Tech  
Sundew Tech 4059-12



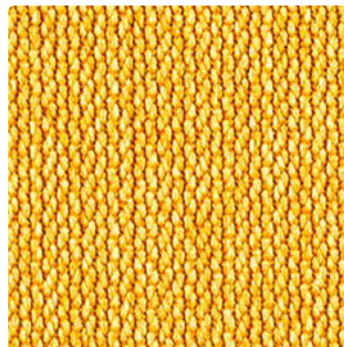
Actuate  
Vanish 4073 - 06



Graviton  
Albedo 1034 - 05



Actuate  
Lambent 4073-09



Percept  
Radiant 4040-24



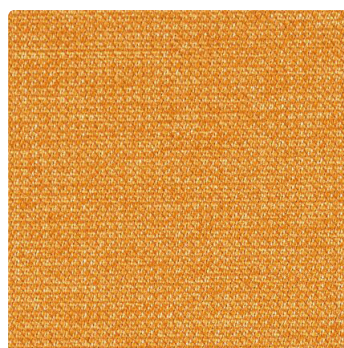
Heather Tech  
Topaz Tech 4059 - 02



Digi Tweed  
Oat Tweed 4058 - 03



Ecotone  
Savanna 4092-07



Crossgrain  
Ginkgo 4089-11



# LUUM



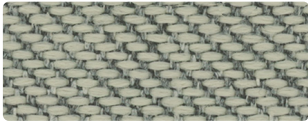
Complect  
Cumulus 1032 - 05



Heather Tech  
Oat Tech 4059 - 03



Digi Tweed  
Silt Tweed 4058 - 05



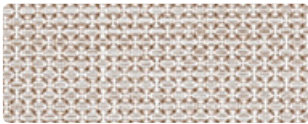
Ecotone  
Tundra 4092 - 05



Digi Tweed  
Flax Tweed 4058 - 04



Digi Tweed  
Loam Tweed 4058 - 06



Graviton  
Half Life 1034 - 06



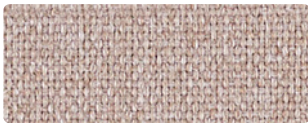
Complect  
Jute 1032 - 04



Actuate  
Mordant 4073 - 08



Actuate  
Suffuse 4073 - 07



Heather Tech  
Flax Tech 4059 - 04



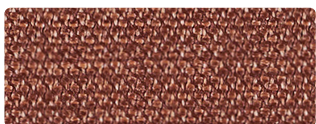
Crossgrain  
Burl 4089 - 12



Percept  
Constant 4040 - 20



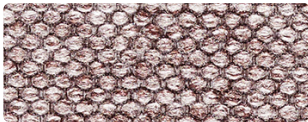
Percept  
Schema 4040 - 21



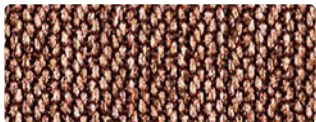
Crossgrain  
Iroko 4089 - 10



Ecotone  
Arid 4092 - 06



Digi Tweed  
Thistle Tweed 4058 - 17



Percept  
Intrinsic 4040 - 06

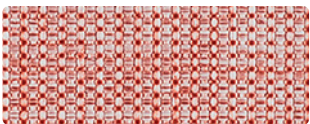


Heather Tech  
Silt Tech 4059 - 05

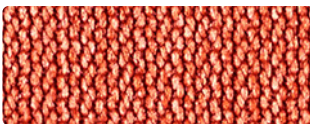
Color Kit 2.0



Digi Tweed  
Sundew Tweed 4058 - 12



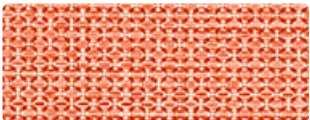
Complect  
Apricot 1032 - 07



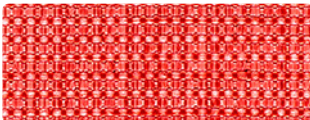
Percept  
Verve 4040 - 19



Heather Tech  
Sundew Tech 4059 - 12



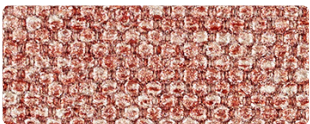
Graviton  
Fission 1034 - 09



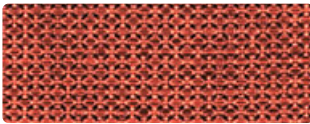
Complect  
Highlighter Pink 1032 - 08



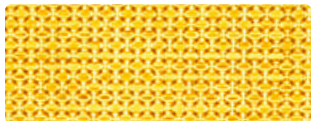
Crossgrain  
Ginkgo 4089 - 11



Digi Tweed  
Rose Tweed 4058 - 13



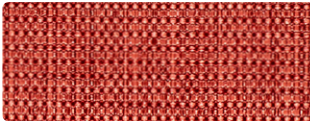
Graviton  
Boiling Point 1034 - 10



Graviton  
Luminous Flux 1034 - 07



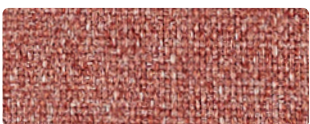
Percept  
Pulse 4040 - 22



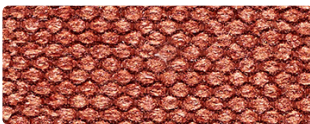
Complect  
Autumn 1032 - 10



Percept  
Radiant 4040 - 24



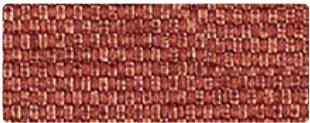
Heather Tech  
Rose Tech 4059 - 13



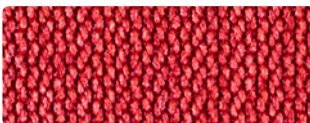
Digi Tweed  
Raspite Tweed 4058 - 14



Actuate  
Lambent 4073 - 09



Actuate  
Meridian 4073 - 14



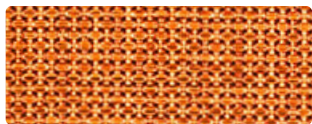
Percept  
Cardinality 4040 - 17



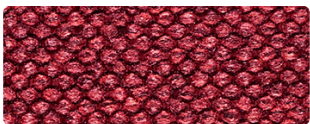
Ecotone  
Savanna 4092 - 07



# LUUM



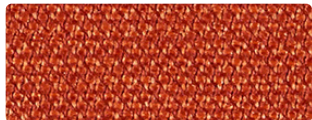
Graviton  
Kelvin 1034 - 09



Digi Tweed  
Madder Tweed 4058 - 15



Crossgrain  
Tuliptree 4089 - 09



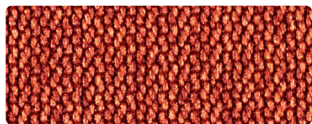
Crossgrain  
Red Oak 4089 - 08



Complect  
Deep Crimson 1032 - 09



Ecotone  
Desert Bloom 4092 - 08



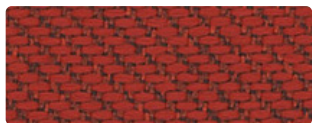
Percept  
Ignite 4040 - 18



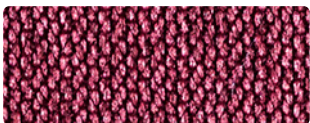
Heather Tech  
Madder Tech 4059 - 15



Actuate  
Prelude 4073 - 13



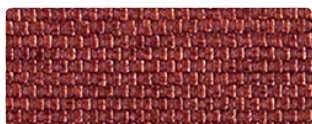
Ecotone  
Badlands 4092 - 09



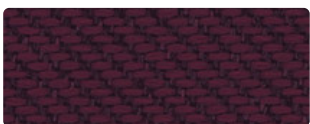
Percept  
Devotion 4040 - 16



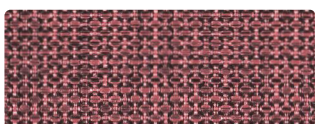
Heather Tech  
Thistle Tech 4059 - 17



Actuate  
Thermal 4073 - 15



Ecotone  
Caldera 4092 - 10



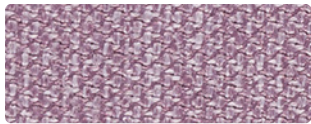
Graviton  
Quantum 1034 - 11



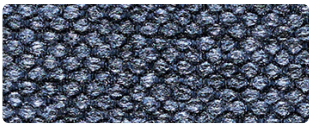
Heather Tech  
Raspite Tech 4059 - 14



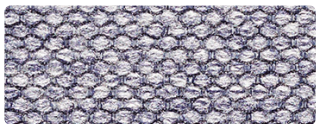
Color Kit 2.0



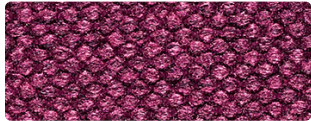
Crossgrain  
Tenon 4089 - 06



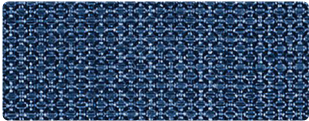
Digi Tweed  
Ocean Tweed 4058 - 21



Digi Tweed  
Lav Tweed 4058 - 18



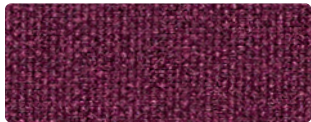
Digi Tweed  
Beetroot Tweed 4058 - 16



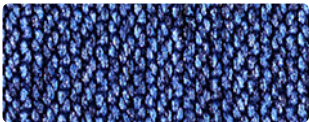
Graviton  
Condensation 1034 - 12



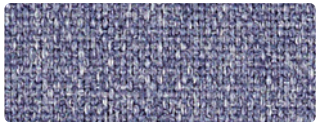
Complect  
Opaline 1032 - 11



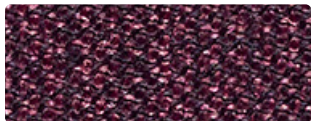
Heather Tech  
Beetroot Tech 4059 - 16



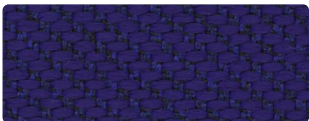
Percept  
Harmonic 4040 - 14



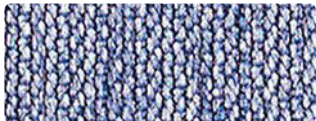
Heather Tech  
Lav Tech 4059 - 18



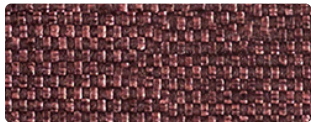
Crossgrain  
Amaranth 4089 - 07



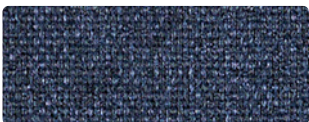
Ecotone  
Rain Shadow 4092 - 13



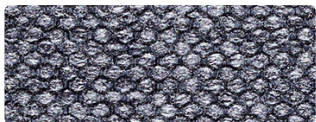
Percept  
Fringe 4040 - 28



Actuate  
Induction 4073 - 16



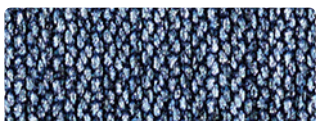
Heather Tech  
Ocean Tech 4059 - 21



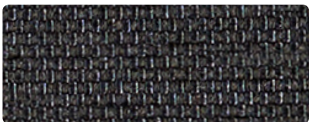
Digi Tweed  
North Sea Tweed 4058 - 22



Percept  
Singular 4040 - 27



Percept  
Nebula 4040 - 15



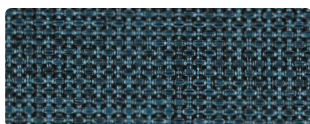
Actuate  
Spectral 4073 - 02



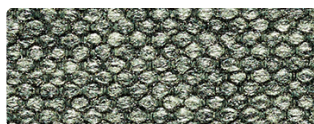
# LUUM



Complect  
Reservoir 1032 - 12



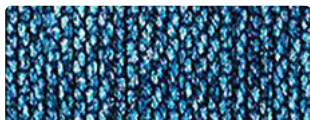
Graviton  
Hydrostatic 1034 - 16



Digi Tweed  
Loden Tweed 4058 - 09



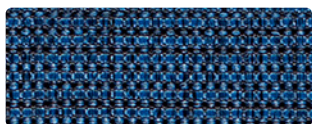
Crossgrain  
Xylem 4089 - 05



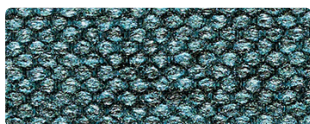
Percept  
Placid 4040 - 26



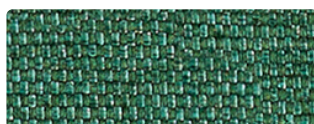
Graviton  
Ampere 1034 - 14



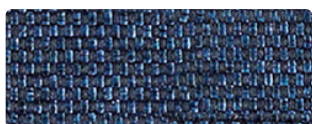
Complect  
Gentian 1032 - 13



Digi Tweed  
Loch Tweed 4058 - 20



Actuate  
Fortify 4073 - 11



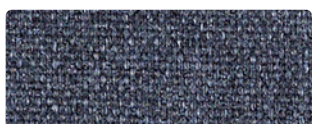
Actuate  
Aqueous 4073 - 01



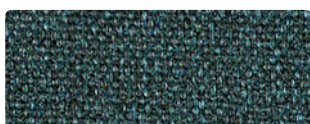
Complect  
Boreal 1032 - 16



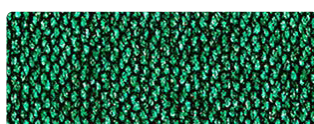
Percept  
Jubilant 4040 - 10



Heather Tech  
North Sea Tech 4059 - 22



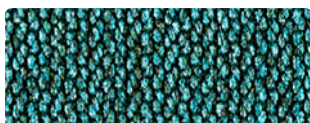
Heather Tech  
Loch Tech 4059 - 20



Percept  
Propagate 4040 - 25



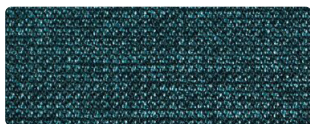
Crossgrain  
Cove 4089 - 04



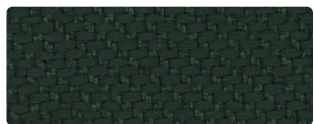
Percept  
Peak 4040 - 12



Crossgrain  
Cypress 4089 - 13



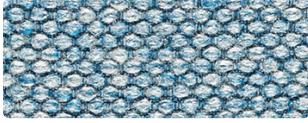
Crossgrain  
Driftwood 4089 - 15



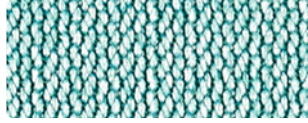
Ecotone  
Treeline 4092 - 16



## Color Kit 2.0



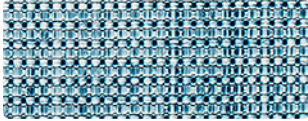
Digi Tweed  
Clear Tweed 4058 - 19



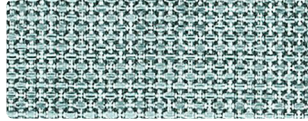
Percept  
Tenet 4040 - 11



Actuate  
Conscious 4073 - 10



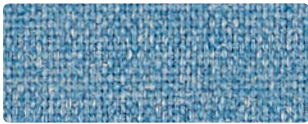
Complect  
Winter 1032 - 15



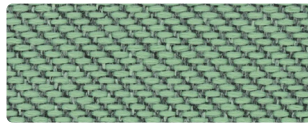
Graviton  
Centigrade 1034 - 13



Digi Tweed  
Sagebrush Tweed 4058 - 10



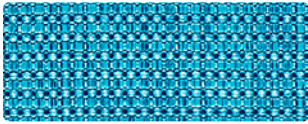
Heather Tech  
Clear Tech 4059 - 19



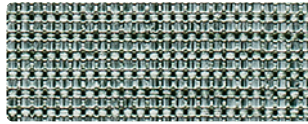
Ecotone  
Lichen 4092 - 14



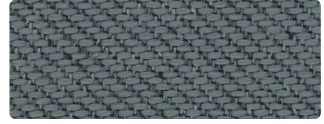
Heather Tech  
Sagebrush Tech 4059 - 10



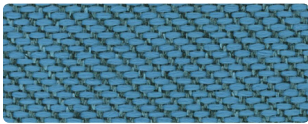
Complect  
Blue Ice 1032 - 14



Complect  
Agave 1032 - 19



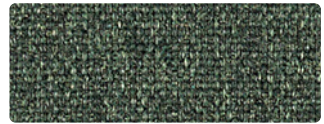
Ecotone  
Rocky Shore 4092 - 03



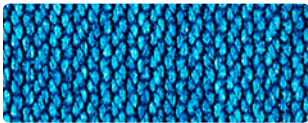
Ecotone  
Freshwater 4092 - 11



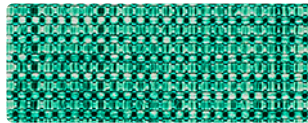
Crossgrain  
Springwood 4089 - 14



Heather Tech  
Loden Tech 4059 - 09



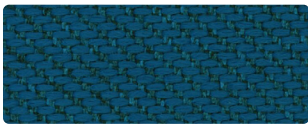
Percept  
Amplitude 4040 - 13



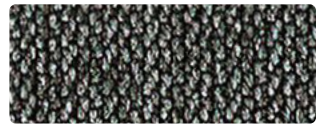
Complect  
Turquoise 1032 - 17



Actuate  
Favrile 4073 - 12

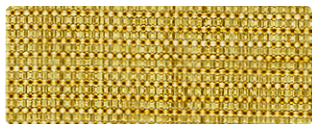


Ecotone  
Intertidal 4092 - 12

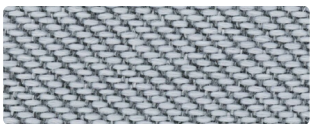


Percept  
Transmit 4040 - 20

# LUUM



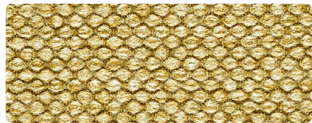
Complect  
Yolk 1032 - 06



Ecotone  
Permafrost 4092 - 04



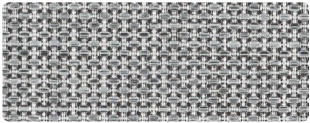
Actuate  
Syntax 4073 - 05



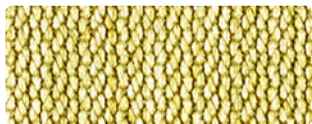
Digi Tweed  
Meadow Tweed 4058 - 11



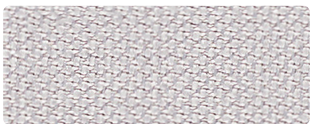
Digi Tweed  
Dust Tweed 4058 - 01



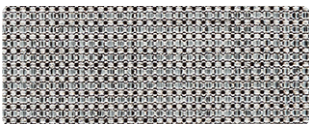
Graviton  
Cloud Chamber 1034 - 04



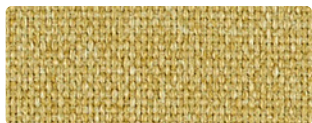
Percept  
Epiphany 4040 - 08



Crossgrain  
Underbrush 4089 - 01



Complect  
Silverleaf 1032 - 03



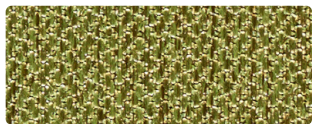
Heather Tech  
Meadow Tech 4059 - 11



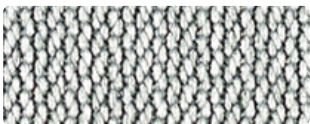
Heather Tech  
Dust Tech 4059 - 01



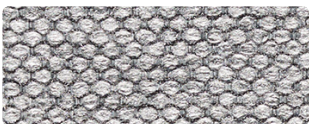
Graviton  
Echo 1034 - 03



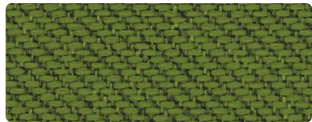
Percept  
Reason 4040 - 09



Percept  
Sublime 4040 - 02



Digi Tweed  
Crag Tweed 4058 - 07



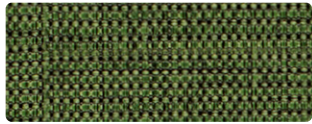
Ecotone  
Mangrove 4092 - 15



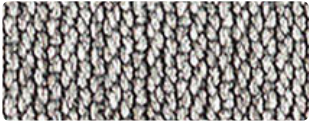
Heather Tech  
Basalt Tech 4059 - 08



Heather Tech  
Loam Tech 4059 - 06



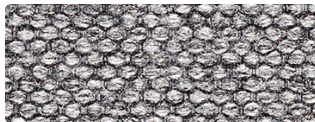
Complect  
Okra 1032 - 18



Percept  
Render 4040 - 21



Color Kit 2.0



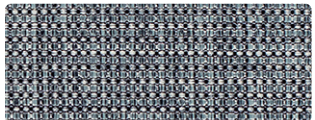
Digi Tweed  
Basalt Tweed 4058 - 08



Graviton  
Chain Reaction 1034 - 02



Complect  
Melanite 1032 - 01



Complect  
Quarry 1032 - 02



Heather Tech  
Crag Tech 4059 - 07



Digi Tweed  
Onyx Tweed 4058 - 23



Actuate  
Facet 4073 - 04



Graviton  
Dark Matter 1034 - 01



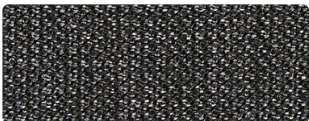
Heather Tech  
Onyx Tech 4059 - 23



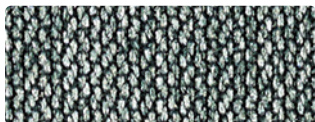
Crossgrain  
Dado 4089 - 02



Actuate  
Aether 4073 - 03



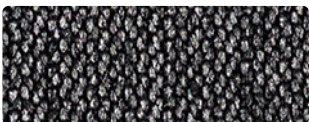
Crossgrain  
Blackwood 4089 - 03



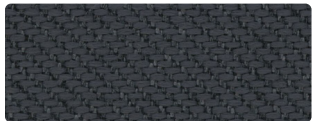
Percept  
Context 4040 - 03



Heather Tech  
Obsidian Tech 4059 - 24



Percept  
Essence 4040 - 04



Ecotone  
Ravine 4092 - 02



Digi Tweed  
Obsidian Tweed 4058 - 24



Ecotone  
Abyss 4092 - 01

Specification

Actuate

Upholstery,  
Wrapped Wall,  
Panel, Screens

**Content:** 60% Polyester +  
40% Recycled Polyester  
(Postconsumer)  
  
**Origin:** USA  
  
**Weight:** 18.8 oz/ly  
**Width:** 54"  
**Repeat:** None  
**Directional:** No

**Certifications:**  
Red List Free  
Clean Air Gold  
Declare

**Finish:** Latex Backing, Stain Repellent  
**Abrasion:** ASTM D4157 Wyzenbeek 100,000 double rubs  
**Breaking Strength:** ASTM D5034 Warp 272 lbf, Fill 374 lbf  
**Seam Slippage:** ASTM D4034 Warp 73 lbf, Fill 54 lbf  
**Colorfastness to Light:** AATCC 16, Grade 4 at 40 Hours  
**Colorfastness to Crocking:** AATCC 8, Wet Class 4.5, Dry Class 4.5  
**Pilling:** ASTM D3511 (Brush Pill), Class 5  
**Acoustical Rating\*:** Fabric Transparency 0.80, NRC 0.70  
**Flame Retardancy:** Cal TB 117-2013, UFAC Class 1 NFPA 260,  
ASTM E84 Unadhered Class A or 1  
**Maintenance:** WS, Clean with either a water-based or solvent-based cleaning agent.  
**Environmental:** Heavy Metal Free, PFOA/PFOS Free Stain Repellent, Recycled Content

Complect

Upholstery,  
Wrapped Wall,  
Panel, Screens

**Content:** 100% Recycled  
Polyester (Postconsumer)  
  
**Origin:** Mexico  
  
**Weight:** 15.88 oz/ly  
**Width:** 54"  
**Repeat:** None  
**Directional:** Yes

**Finish:** Stain Repellent  
**Abrasion:** ASTM D4157 Wyzenbeek 100,000 double rubs  
**Breaking Strength:** ASTM D5034 Warp 100 lbf, Fill 93 lbf  
**Seam Slippage:** ASTM D4034 Warp 34 lbf, Fill 85 lbf  
**Colorfastness to Light:** AATCC 16, Grade 4 at 40 Hours  
**Colorfastness to Crocking:** AATCC 8, Wet Class 4, Dry Class 4  
**Pilling:** ASTM D3511 (Brush Pill), Class 4  
**Acoustical Rating\*:** Fabric Transparency 0.65, NRC 0.60 tested to ISO 10534-2 standards  
**Flame Retardancy:** Cal TB 117-2013, UFAC Class 1, NFPA 260  
ASTM E84 Unadhered Class A  
**Maintenance:** WS, Clean with either a water-based or solvent-based cleaning agent.  
**Environmental:** Recycled Content, Heavy Metal Free, PFOA/PFOS Free Stain Repellent

Crossgrain

Upholstery,  
Wrapped Wall,  
Panel, Screens

**Content:** 61% Polyester  
+ 39% Recycled Polyester  
(Postconsumer)  
  
**Origin:** Mexico  
  
**Weight:** 21 ±0.5 oz/ly  
**Width:** 54"  
**Repeat:** None  
**Directional:** Yes

**Certifications:**  
Red List Free  
Clean Air Gold  
Declare

**Finish:** Stain Repellent, Latex Backing  
**Abrasion:** ASTM D4157 Wyzenbeek 100,000 double rubs  
**Breaking Strength:** ASTM D5034 Warp 290 lbf, Fill 357 lbf  
**Seam Slippage:** ASTM D4034 Warp 143 lbf, Fill 105 lbf  
**Colorfastness to Light:** AATCC 16, Grade 4-5 at 40 Hours  
**Colorfastness to Crocking:** AATCC 8, Wet Class 4, Dry Class 4  
**Pilling:** ASTM D3511 (Brush Pill), Class 4  
**Acoustical Rating\*:** Fabric Transparency 0.65, NRC 0.55 tested to ISO 10534-2 standards  
**Flame Retardancy:** Cal TB 117-2013, UFAC Class 1, NFPA 260  
ASTM E84 Unadhered Class A  
**Maintenance:** WS, Clean with either a water-based or solvent-based cleaning agent  
**Environmental:** Heavy Metal Free, PFOA/PFOS Free Stain Repellent, Recycled Content

Digi Tweed

Upholstery,  
Wrapped Wall,  
Panel, Screens

**Content:** 55% Recycled  
Polyester (Postconsumer) +  
45% Polyester  
  
**Origin:** USA  
  
**Weight:** 19.6 oz/ly  
**Width:** 54"  
**Pattern Repeat:** None  
**Directional:** Yes

**Certifications:**  
Red List Free  
Clean Air Gold  
Declare

**Finish:** Stain Repellent  
**Abrasion:** ASTM D4157 Wyzenbeek 100,000 double rubs  
**Breaking Strength:** ASTM D5034 Warp 331 lbf, Fill 368 lbf  
**Seam Slippage:** ASTM D4034 Warp 158 lbf, Fill 242 lbf  
**Colorfastness to Light:** AATCC 16, Grade 4 at 40 Hours  
**Colorfastness to Crocking:** AATCC 8, Wet Class 4, Dry Class 4  
**Pilling:** ASTM D3511 (Brush Pill), Class 4.5  
**Acoustical Rating\*:** Fabric Transparency 0.90, NRC 0.70  
**Flame Retardancy:** Cal TB 117-2013, ASTM E84 Unadhered Class A or 1  
**Maintenance:** WS, Clean with either a water-based or solvent-based cleaning agent.  
**Environmental:** Heavy Metal Free, PFOA/PFOS Free Stain Repellent, Recycled Content

\*Acoustical rating tested to ISO 10534-2 standards

\*\*Rate and extent of biodegradation into elements found in nature is 91% after 1,278 days under ASTM D5511 (Anaerobic Biodegradation of Plastic Materials Under High Solids Anaerobic Digestion Conditions.) The test was done with the same component (PET) polyester and biocatalyst additive. No evidence of further degradation.

Dyes lots may vary slightly from samples shown.

All samples shown off the bolt.

Abrasion test results exceeding ACT Performance Guidelines are not an indicator of product lifespan.



## Ecotone

Upholstery,  
Wrapped Wall,  
Panel, Screens

**Content:** 100% Recycled  
Biodegradable\*\* Polyester  
(Postconsumer)

**Origin:** Mexico

**Weight:** 20.5 oz/ly  
**Width:** 54"  
**Repeat:** None  
**Directional:** Yes

**Finish:** None  
**Abrasion:** ASTM D4157 Wyzenbeek 100,000 double rubs  
**Breaking Strength:** ASTM D5034 Warp 407 lbf, Fill 407 lbf  
**Seam Slippage:** ASTM D4034 Warp 129 lbf, Fill 105 lbf  
**Colorfastness to Light:** AATCC 16, Grade 4-5 at 40 Hours  
**Colorfastness to Crocking:** AATCC 8, Wet Class 4, Dry Class 4  
**Pilling:** ASTM D3511 (Brush Pill), Class 4  
**Acoustical Rating\*:** Fabric Transparency 0.80, NRC 0.60 tested to ISO 10534-2 standards  
**Flame Retardancy:** Cal TB 117-2013, UFAC Class 1, NFPA 260  
ASTM E84 Unadhered Class A  
**Maintenance:** WS, Clean with either a water-based or solvent-based cleaning agent.  
Bleach Cleanable: 9% (10:1 Ratio), wipe with water after solution  
**Environmental:** Biodegradable\*\*, Heavy Metal Free, REACH Regulation Compliant  
Recycled Content



**Certifications:**  
Clean Air Gold

## Graviton

Upholstery,  
Wrapped Wall,  
Panel, Screens

**Content:** 100% Recycled  
Polyester (Postconsumer)

**Origin:** Mexico

**Weight:** 18 oz/ly  
**Width:** 54"  
**Repeat:** None  
**Directional:** Yes

**Finish:** Stain Repellent  
**Abrasion:** ASTM D4157 Wyzenbeek 100,000 double rubs  
**Breaking Strength:** ASTM D5034 Warp 359 lbf, 372 Fill lbf  
**Seam Slippage:** ASTM D4034 Warp 49 lbf, Fill 55 lbf  
**Colorfastness to Light:** AATCC 16, Grade 4-5 at 40 Hours  
**Colorfastness to Crocking:** AATCC 8, Wet Class 5, Dry Class 5  
**Pilling:** ASTM D3511 (Brush Pill), Class 5  
**Flame Retardancy:** Cal TB 117-2013  
**Acoustical Rating\*:** Fabric Transparency 0.80, NRC 0.65 tested to ISO 10534-2 standards  
**Maintenance:** WS, Clean with either a water-based or solvent-based cleaning agent  
**Environmental:** Recycled Content, Heavy Metal Free, PFOA/PFOS Free Stain Repellent,  
REACH Regulation Compliant



## Heather Tech

Upholstery,  
Wrapped Wall,  
Panel, Screens

**Content:** 67% Recycled  
Polyester (Postconsumer) +  
33% Polyester

**Origin:** USA

**Weight:** 13.8 oz/ly  
**Width:** 54"  
**Pattern Repeat :** None  
**Directional:** No

**Finish:** Stain Repellent  
**Abrasion:** ASTM D4157 Wyzenbeek 100,000 double rubs  
**Breaking Strength:** ASTM D5034 Warp 294 lbf, Fill 219 lbf  
**Seam Slippage:** ASTM D4034 Warp 182 lbf, Fill 154 lbf  
**Colorfastness to Light:** AATCC 16, Grade 4 at 40 Hours  
**Colorfastness to Crocking:** AATCC 8, Wet Class 4, Dry Class 4  
**Pilling:** ASTM D3511 (Brush Pill), Class 4.5  
**Acoustical Rating\*:** Fabric Transparency 0.90, NRC 0.70  
**Flame Retardancy:** Cal TB 117-2013, ASTM E84 Unadhered Class A or 1  
**Maintenance:** WS, Clean with either a water-based or solvent-based cleaning agent.  
**Environmental:** Heavy Metal Free, PFOA / PFOS Free Stain Repellent, Recycled Content



**Certifications:**  
Red List Free  
Clean Air Gold  
Declare

## Percept

Upholstery,  
Wrapped Wall,  
Panel, Screens

**Content:** 81% Recycled  
Polyester (Postconsumer) +  
19% Polyester

**Origin:** USA

**Weight:** 18.5 ± 0.5 oz/ly  
**Width:** 54"  
**Pattern Repeat:** None  
**Directional:** No

**Finish:** Stain Repellent  
**Abrasion:** ASTM D4157 Wyzenbeek 95,000 double rubs  
**Breaking Strength:** ASTM D5034 Warp 404 lbf, Fill 372 lbf  
**Seam Slippage:** ASTM D4034 Warp 159 lbf, Fill 179 lbf  
**Colorfastness to Light:** AATCC 16, Grade 4 at 40 Hours  
**Colorfastness to Crocking:** AATCC 8, Wet Class 4, Dry Class 4  
**Pilling:** ASTM D3511 (Brush Pill) Class 5  
**Acoustical Rating\*:** Fabric Transparency 0.85, NRC 0.75  
**Flame Retardancy:** Cal TB 117-2013, ASTM E84 Unadhered Class A or 1  
**Maintenance:** WS, Clean with either a water-based or solvent-based cleaning agent  
**Environmental:** PFOA/PFOS Free Stain Repellent, Recycled Content



**Certifications:**  
Clean Air Gold  
Declare

\*Acoustical rating tested to ISO 10534-2 standards

\*\*Rate and extent of biodegradation into elements found in nature is 91% after 1,278 days under ASTM D5511 (Anaerobic Biodegradation of Plastic Materials Under High Solids Anaerobic Digestion Conditions.) The test was done with the same component (PET) polyester and biocatalyst additive. No evidence of further degradation.

Dyes lots may vary slightly from samples shown.

All samples shown off the bolt.

Abrasion test results exceeding ACT Performance Guidelines are not an indicator of product lifespan.

**Canada**  
877.705.LUUM  
luumtextiles.ca

**USA**  
877.705.LUUM  
luumtextiles.com

**International**  
919.464.2922  
luumtextiles.com

cdn/us/int/10/22

© Luum™ 2022, all rights reserved.  
\*,™ Trademarks used under license by Luum™, Actuate, Complect, Crossgrain, Digi Tweed,  
Ecotone, Graviton, Heather Tech, Percept

\*Certification marks owned by the Association for Contract Textiles.

SC-350-COLOR KIT