

LUUM

Organized Complexity Collection

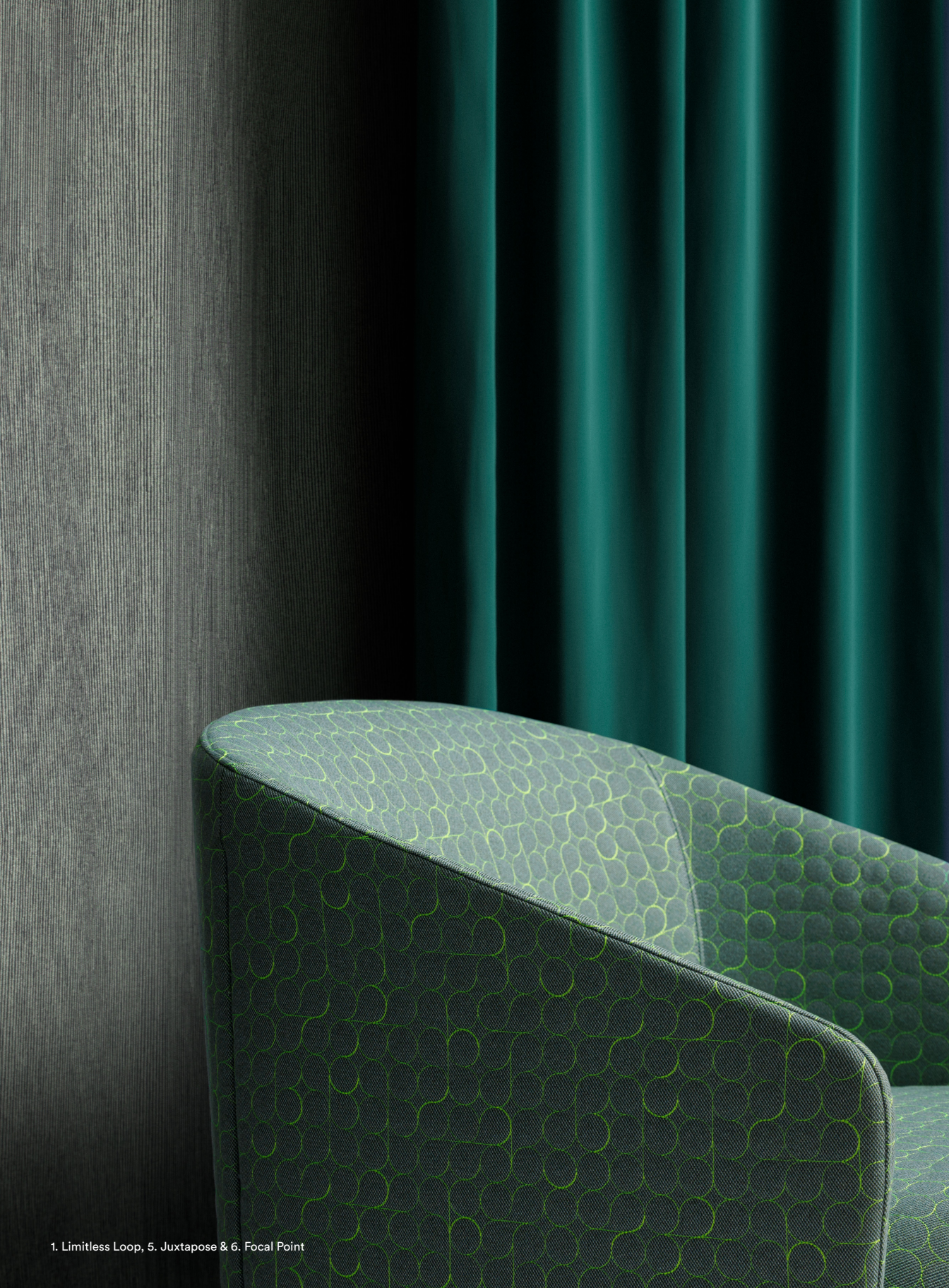
09 — 2023

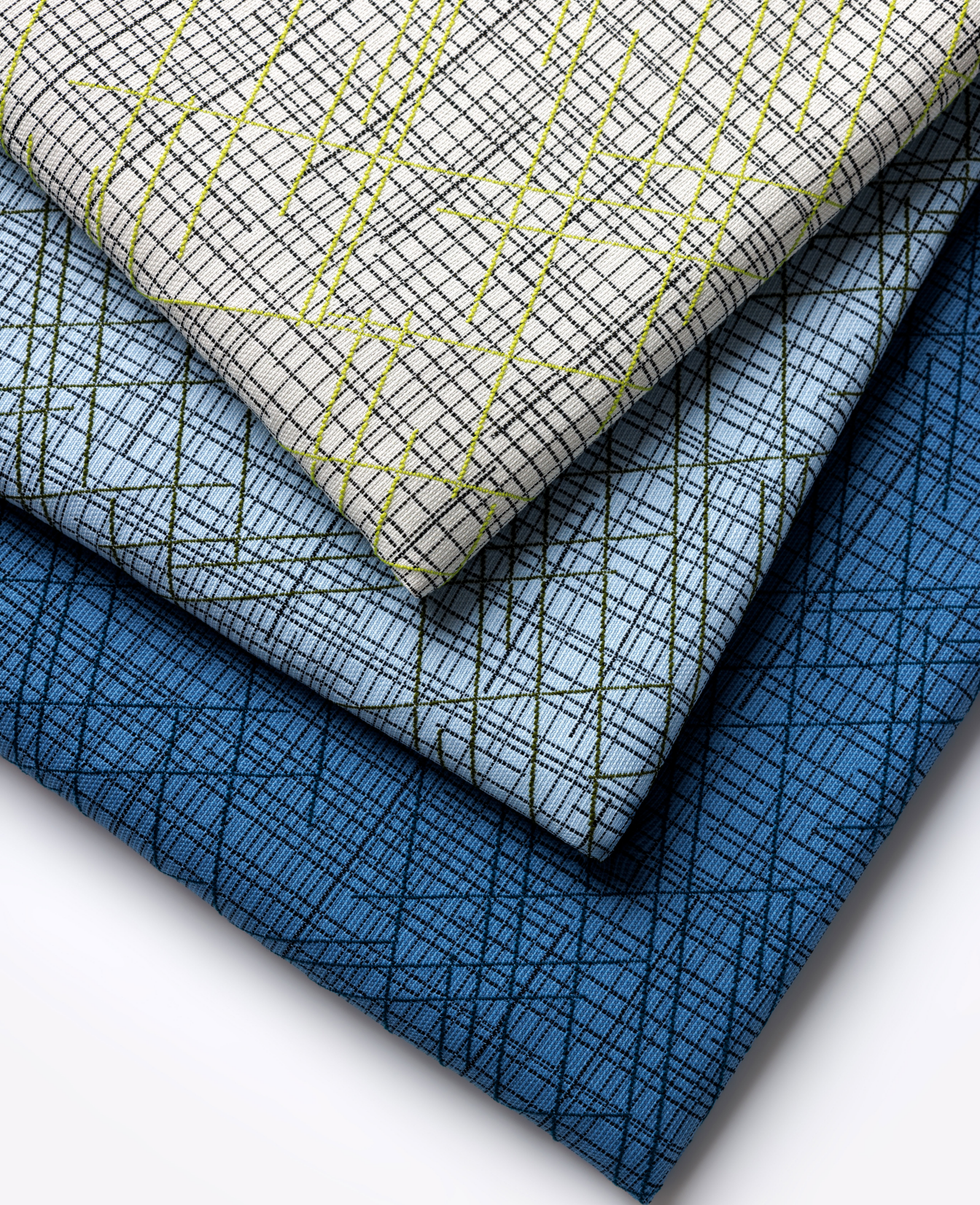


Organized Complexity Collection

The *Organized Complexity* collection by Suzanne Tick features 6 textiles that explore human connection in tandem with nature—which continuously finds ways to fit form to function, collectively-evolving in pursuit of a greater equilibrium. Through pattern work, manufacturing techniques, and materiality, *Organized Complexity* reveals the ways in which humans can mirror the natural systems around us to better relate with one another.

Pairing a bright, accented palette with biodegradable and recycled fibers, this integrated toolkit of multipurpose, wrapped wall, drapery, and upholstery textiles packs a colorful punch with deep reverence for nature—creating opportunities for renewed vitality in any space.





1 ——— Limitless Loop

Limitless Loop is a dimensional, quilted textile made for upholstery and wrapped wall. Inspired by the fractal patterns found in nature, *Limitless Loop*'s geometric curves pass through every point on its surface, tracing and retracing their paths for a subtle, in-and-out fade. Neutrals and pops of color are embroidered with nylon stitching to *Limitless Loop*'s base cloth, *Cult Classic*, as well as a polyfill base—creating a soft, pillowy surface.

Use: Upholstery

Content: 100% Polyester Ground + 50% Polyester + 50% Nylon Stitching

Number of Colorways: 6 (shown on left on chair): Mitosis

(shown on reverse with *Milieu*, top to bottom): Spring (*Milieu*), Mitosis (*Limitless Loop*), Loft (*Milieu*), Waveform (*Limitless Loop*), Bevy (*Milieu*)

Abrasion: Wyzenbeek 100,000 double rubs

Special Characteristics: Chemical Finish Free, Heavy Metal Free

2 ——— Intraweb

Intraweb is the fourth 100% recycled, biodegradable polyester textile in the Luum line, joining *Grid State*, *Ecotone* and *Biotope* to provide sustainable solutions for multipurpose spaces. Featuring recycled cationic, disperse and solution dyed polyester fibers enhanced with a bio-catalyst additive, *Intraweb* biodegrades in anaerobic environments in 3.5 years by attracting microorganisms to break down its polymer chains, leaving only naturally-occurring elements in their wake. *Intraweb*'s overlapping 3-color pattern references the impact of communication on social systems, connecting and splintering in a continuous conversation with nature.

Use: Multipurpose

Content: 100% Recycled Biodegradable Polyester (Post-Consumer)

Number of Colorways: 9 (shown here, top to bottom): Coaxial, Polarity, Isosurface

Abrasion: Wyzenbeek 100,000 double rubs

Special Characteristics: Recycled Content, Chemical Finish Free, Biodegradable, Fluorine Free Stain Repellent,

Facts 3-rd party certified to NSF/ANSI 336 Gold

3 ——— Milieu

Milieu's chenille construction offers a smooth hand and a heathered appearance to create a soft look on wrapped walls, panels, screens, and upholstery. Both soft and technical colors are made using cationic and disperse fiber dye technology, with variegation running through the weft of its matte surface—producing a striated expression up close and a more harmonious surface from afar. Composed of recycled polyester chenille yarns and a fluorine-free stain repellent, *Milieu* offers a range of 27 colors—from muted neutrals to saturated brights—to calm or uplift any interior surface.

Use: Multipurpose

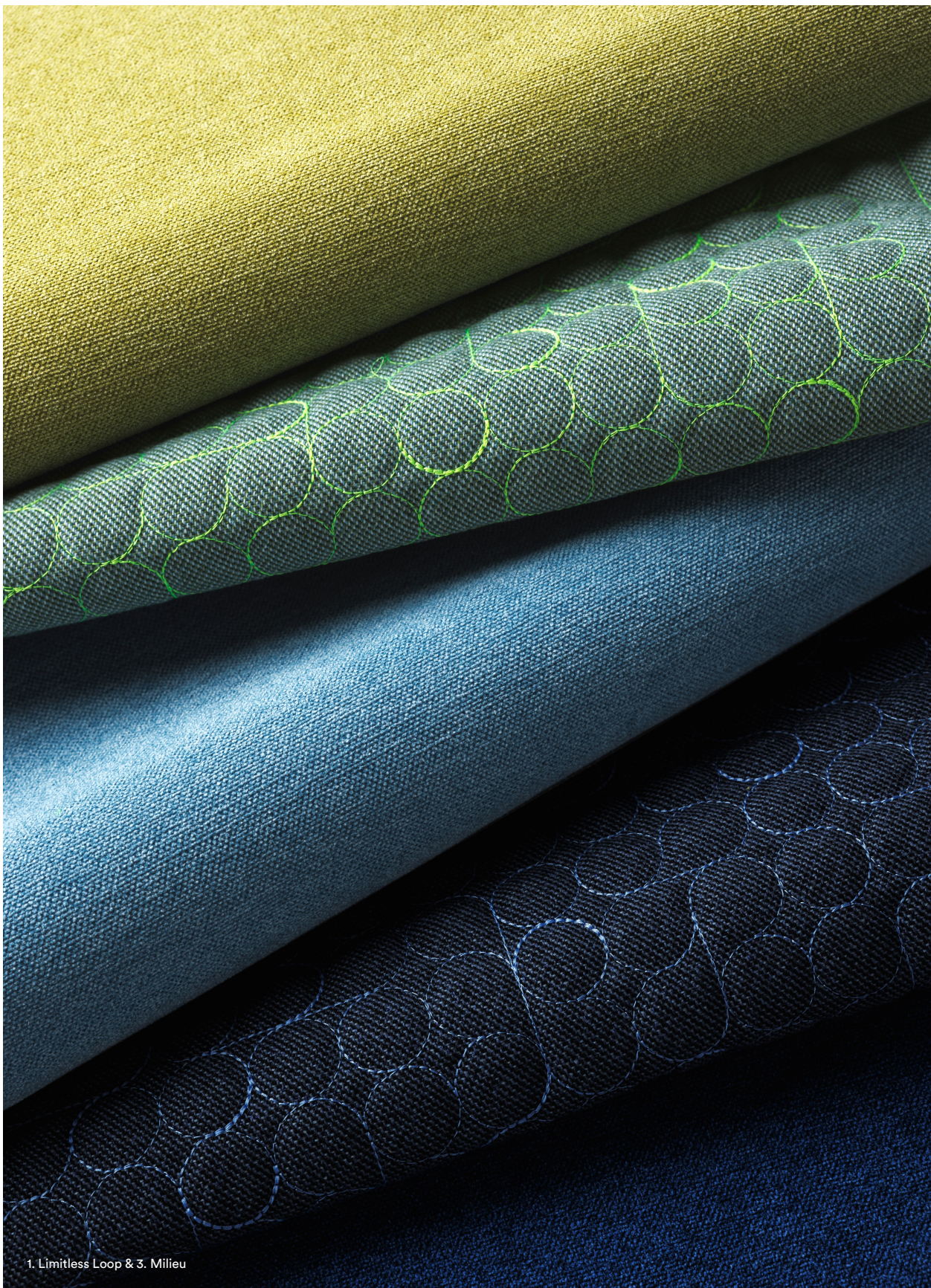
Content: 90% Recycled Polyester (Post-Consumer) + 10% Polyester

Number of Colorways: 27 (shown on reverse, top to bottom): Prickle, Leap, Nest, Herd, Fling

(shown on reverse with *Milieu*, top to bottom): Spring (*Milieu*), Mitosis (*Limitless Loop*), Loft (*Milieu*), Waveform (*Limitless Loop*), Bevy (*Milieu*)

Abrasion: Wyzenbeek 100,000 double rubs

Special Characteristics: Recycled Content, Fluorine Free Stain Repellent

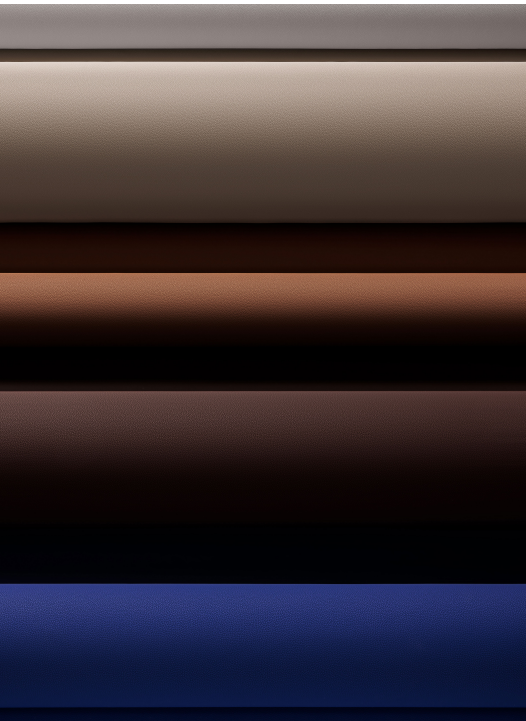


1. Limitless Loop & 3. Milieu



3. Milieu

4. Touch Tone



5. Juxtapose



4 ——— Touch Tone

Inspired by one of the most fundamental forms of communication, *Touch Tone* reimagines basic faux leathers with a coated polyurethane face and silicone topcoat technology: soft and supple, highly-upholsterable, and competitively priced, with the added benefits of bleach-cleanability and stain resistance—making it suitable for any corporate, education, healthcare, and hospitality setting. *Touch Tone*'s fresh palette of 22 highly-coordinative colorways work together with Luum's small, mid, and large scale patterns to create a holistic design solution for all types of seating.

Use: Upholstery

Content: Face: 90% Polyurethane + 10% Silicone

Backing: 100% Polyester knit

Number of Colorways: 22 (*shown at left, top to bottom*): Lily, Sycamore, Mulch, Vineyard, Levee

(*shown on left behind chair*): Greenheart

Abrasion: Wyzenbeek 500,000 double rubs

Special Characteristics: Bleach Cleanable, Ink/Stain Resistant, Chemical Finish Free, PVC Free, DMF Free, Phthalate Free,

Complies with California Section 01350 VOC Emission Standards

5 ——— Juxtapose

Juxtapose reflects the beauty of nature's imperfections with large-scale, wood-grain-like variation.

Fitting form to function, *Juxtapose*'s full-width organic pattern camouflages the seams for wallcovering installations with a subtle vertical flow—creating areas that are dense and others that are more open.

All 6 nature-inspired colorways are designed to work as a textile alternative to wood veneer, for the wall and for a more holistic space.

Use: Direct Glue

Content: 70% Recycled Polyester + 30% Polyester

Number of Colorways: 6 (*shown at left, top to bottom*): Greenheart, Rosewood, Lumber

Special Characteristics: Bleach Cleanable

6 ——— Focal Point

Acoustically absorbent, light-dimming, and soft to the touch, *Focal Point* drapery honors the role of acoustics in deep intrapersonal connection with fire-retardant and Clean Air Gold-certified velvet. *Focal Point*'s 8 rich colorways—dramatic reds, deep blues and greens—exist to create conversation between the areas in any space, from window backdrops in hospitality to breakout areas in corporate settings.

Use: Drapery

Content: 100% Polyester

Number of Colorways: 8 (*shown on reverse, with Limitless Loop and Juxtapose*): Green Screen

Special Characteristics: Chemical Finish Free, Heavy Metal Free, Clean Air Gold