

**Name**  
Barberpole Basket

**Designer**  
Suzanne Tick

**Style No.**  
4114

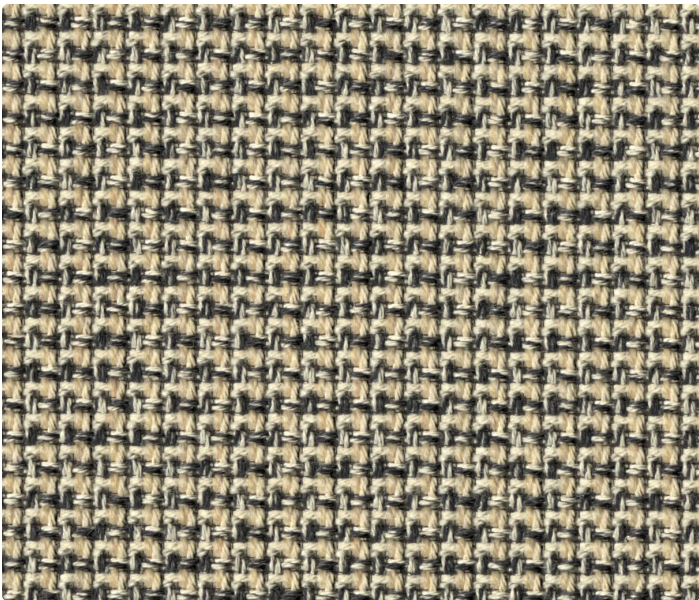
**Collection**  
Super Natural

**Use**  
Upholstery

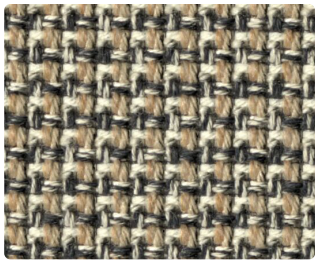
**Content**  
35% Cotton +  
28% Wool +  
26% Recycled Cotton +  
7% Recycled Polyester +  
4% Nylon

**Abrasion**  
Wyzenbeek  
100,000 double rubs

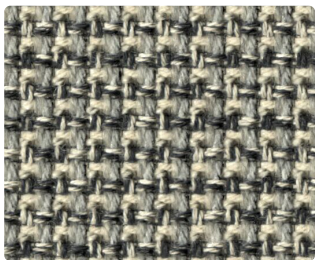
**Environmental**  
Renewable Content  
Recycled Content  
Heavy Metal Free



Mycelium 4114-05



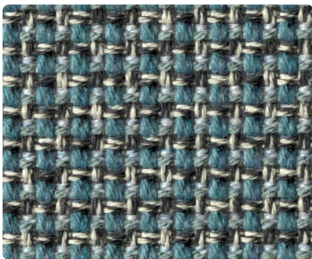
Braided Rope 4114-06



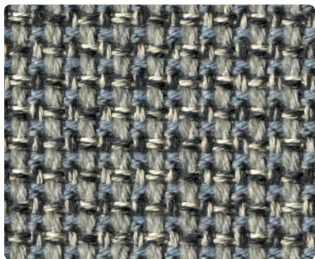
Wisp 4114-04



Uzumaki 4114-07



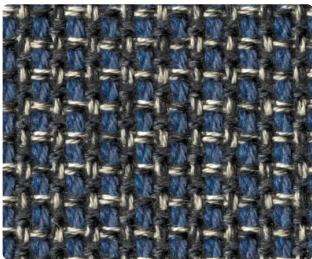
Meander 4114-11



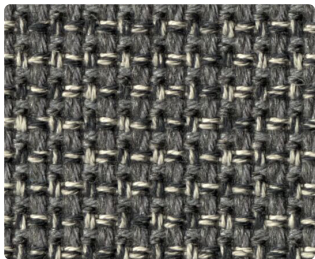
Double Helix 4114-03



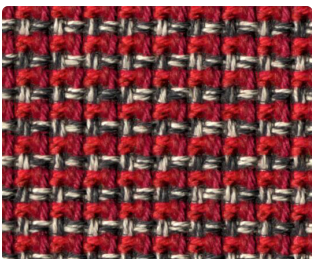
Copper Coil 4114-08



Tempest 4114-12



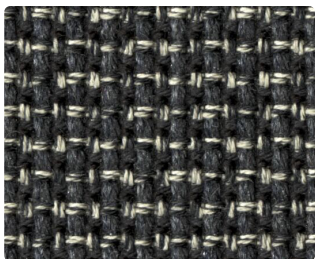
Maelstrom 4114-02



Cherry Twist 4114-09



Tendrill 4114-10



Licorice Root 4114-01

Name

Barberpole Basket

Style No.

4114

Specification

Use: Upholstery  
Content: 35% Cotton + 28% Wool + 26% Recycled Cotton (Preconsumer)  
+ 7% Recycled Polyester (Postconsumer) + 4% Nylon  
Weight: 21.25 oz per linear yard  
Width: 54"  
Pattern Repeat: 0.18" Horizontal, 0.18" Vertical  
Directional: Yes

Finish

Acrylic Backing

Performance

Abrasion: AASTM D4157 Wyzenbeek 100,000 double rubs  
Breaking Strength: ASTM D5034 Warp 133 lbf, Fill 142 lbf  
Seam Slippage: ASTM D4034 Warp 42.1 lbf, Fill 34.3 lbf  
Colorfastness to Light: AATCC 16, Grade 5 at 40 Hours  
Colorfastness to Crocking: AATCC 8, Wet Class 4, Dry Class 4-5  
Pilling: ASTM D3511 (Brush Pill), Class 3

Maintenance

S, Clean with a dry cleaning or solvent-based cleaning agent. Do not use water-based cleaning products.

Flame Retardancy

Cal TB 117-2013

Environmental

Renewable Content  
Recycled Content  
Heavy Metal Free

Origin

USA

Dye lots may vary slightly from samples shown. Samples shown off the bolt.  
Wool is a natural product. Color variations are part of the natural beauty of wool and are not considered a defect.



Canada

877.705.LUUM  
luumtextiles.ca

USA

877.705.LUUM  
luumtextiles.com

International

919.464.2922  
luumtextiles.com

cdn/us/int/2023

© Luum™ 2023, all rights reserved.  
\*™ Trademarks used under license by Luum™, Barberpole Basket™  
\*Certification Marks owned by the Association for Contract Textiles, Inc.  
Abrasion test results exceeding ACT Performance Guidelines are not an indicator of product lifespan.  
Multiple factors affect fabric durability and appearance retention.

U8-SC-305-4114