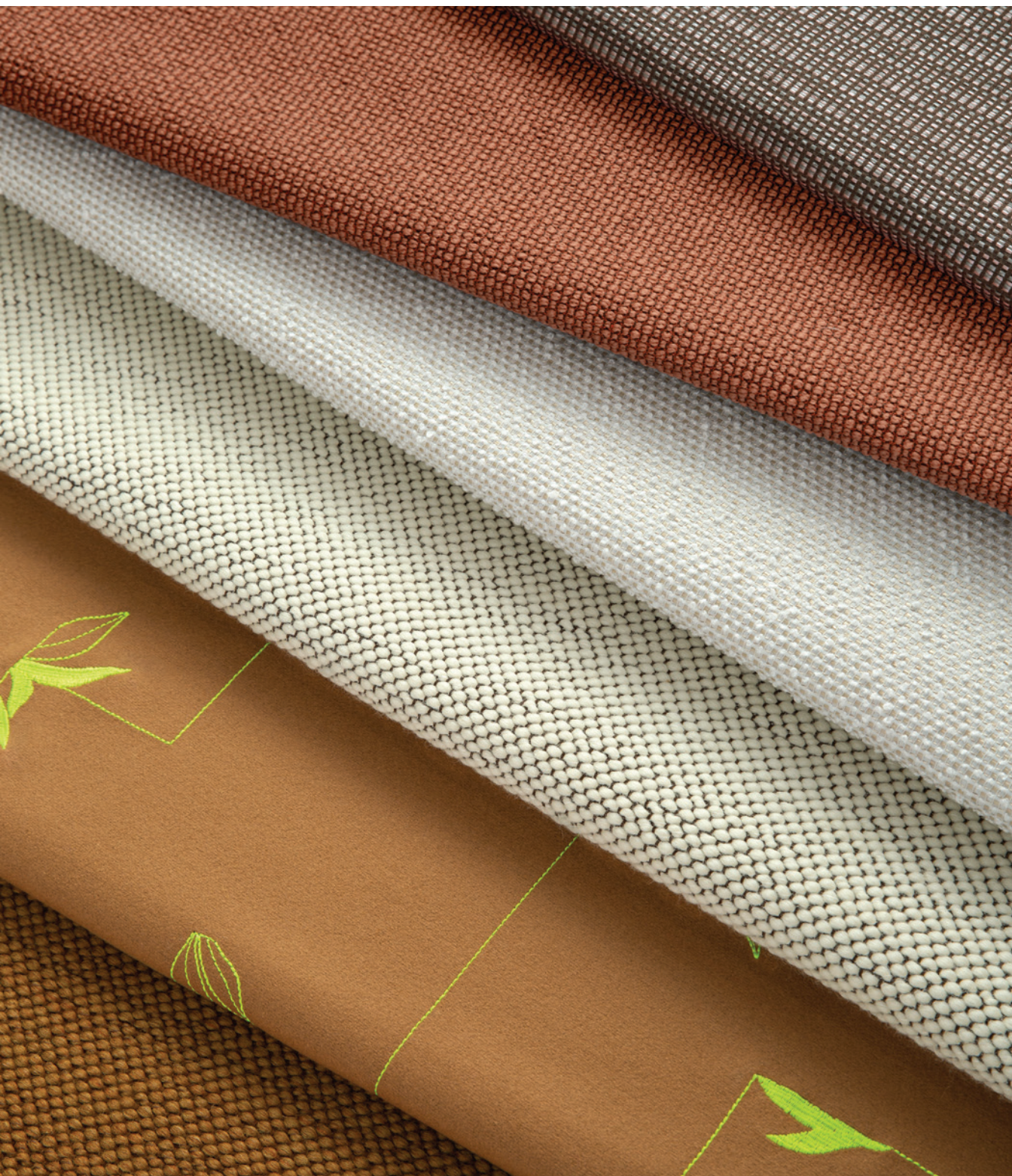


LUUM

Mutable Matter Collection

09 — 2020



Mutable Matter Collection

Exploring fiber, structure and process, the *Mutable Matter* collection of five textiles by Suzanne Tick seeks to transform renewable and recycled fibers into new surfaces with energy and texture.

Mutable Matter focuses on the conditions of the design process, both the craft of weaving and embroidery, as well as the chemistry of fiber and dye development. Here we explore the basic components of cloth — the torque of a yarn, fibers' natural variegation, the rationality of the weave structure, and a scientific approach to color. Ornament becomes architectural, and botanical motifs challenge our notion of the decorative. Optical phenomena reflect the wonders of the natural world; and renewable fibers create grounded, comforting surfaces.

Through this exploration, *Mutable Matter* provides a contemporary grouping of upholstery and wall covering options with a range of effects, from earthly to atmospheric.





Collection: Mutable Matter
Designer: Suzanne Tick

Use: Upholstery

Even through the smallest crack in the pavement, nature finds a way to break through. In *Second Nature*, Luum’s first contemporary floral pattern, a botanical motif emerges from an architectural stitched pattern, expressing nature’s ability to regenerate and challenging our perceptions of traditional floral patterns.

1 ——— Second Nature

Content: 78% Wool + 21% Nylon + 1% Polyester
Number of Colorways: 6
(shown here, left to right): Moonflower *(on chair)*, Moonflower, Muscadine
Abrasion: Martindale 100,000 cycles
Special Characteristics: Renewable Content

Even through the smallest crack in the pavement, nature finds a way to break through. In *Second Nature*, Luum’s first contemporary floral pattern, a botanical motif emerges from an architectural stitched pattern, expressing nature’s ability to regenerate and challenging our perceptions of traditional floral patterns. Using the wool-blend solid *Construct* as a base cloth, *Second Nature*’s linear stitching refers to structure while transforming the surface of the fabric, inviting us to reimagine our relationship with the natural environment.

2 — Fleece

Fleece’s lofty surface emerges from the volume and natural variegation of its wool fiber blend. Here, the interaction between raw material and design is inherently structural, rather than stylized or applied. Within its lush blend of twisted wool, cotton and polyester, the fibers bloom, cuddling the surfaces of furniture and grounding the user in a space.

Use: Upholstery
Content: 60% Wool + 24% Polyester + 16% Cotton
Number of Colorways: 9
(shown here, left to right): Glyph, Alum, Aer, Linseed, Nero
Abrasion: Martindale 60,000 cycles
Special Characteristics: REACH Regulation Compliant, Renewable Content

3 — Ample

A Luum collection mainstay, *Ample* has an energy that buzzes from its strong, textural surface, which results from the way its robust fill yarn plays against a darker warp color. *Ample’s* palette has been re-engineered by adding refreshed tones, both nuanced and bright. With its holistic approach to color, *Ample* continues to evolve as a toolkit for vibrancy and texture.

Use: Upholstery
Content: 77% Polyester + 17% Cotton + 6% Acrylic
Number of Colorways: 24
(shown here, left to right): Reaction, Radar, Conductor, Convection, Equilibrium, Quark, Halide, Evaporate, Neutron, Vortex
Abrasion: Wyzenbeek 100,000 double rubs

4 — Rhetoric

Rhetoric, a bleach cleanable wall covering for direct glue and wrapped wall application, is as elegantly simple as it is structurally complex. Composed of 80% recycled polyester, its luminosity and depth come from its structure, which was developed through hand-weaving trials at Tick Studio. Tactile boucle fibers emerge from its weave structure, while lustrous polypropylene tape yarn adds vibrancy. *Rhetoric* looks and feels distinctly like the textile that it is, transforming space by creating a soft, heavily textured sensation.

Use: Wrapped Wall/Direct Glue Wall
Content: 80% Recycled Polyester (50% Pre-Consumer, 30% Post-Consumer) + 20% Polypropylene
Number of Colorways: 6
(shown here, top to bottom): Nuance, Kairos, Logos, Pathos
Special Characteristics: Recycled Content, PFOA/PFOS-Free Stain Repellent, Bleach Cleanable

5 — Stratiform

Stratiform offers a large-scale striated pattern with luminescent hues and a handwoven sensibility for wrapped wall and panel applications. Joining vertical textiles *Rhetoric*, *Lustrado* and *Mica Shift*, which were also developed on the hand loom at Tick Studio, *Stratiform’s* modified jacquard structure also features metallic polypropylene tape which stands out against a solid warp, adding dimension and movement. *Stratiform* is made of 52% recycled polyester with a palette of classic light tones and sophisticated warms and cools.

Use: Wrapped Wall/Panel
Content: 52% Recycled Polyester (43% Pre-Consumer, 9% Post-Consumer) + 48% Polypropylene
Number of Colorways: 7
(shown here, top to bottom): Calcify, Moraine, Sandhill, Bedrock, Limestone
Special Characteristics: Recycled Content, Bleach Cleanable

USA, Canada 877.705.LUUM
International 919.464.2922

luumtextiles.com



3. Ample



5. Stratiform



4. Rhetoric



2. Fleece