



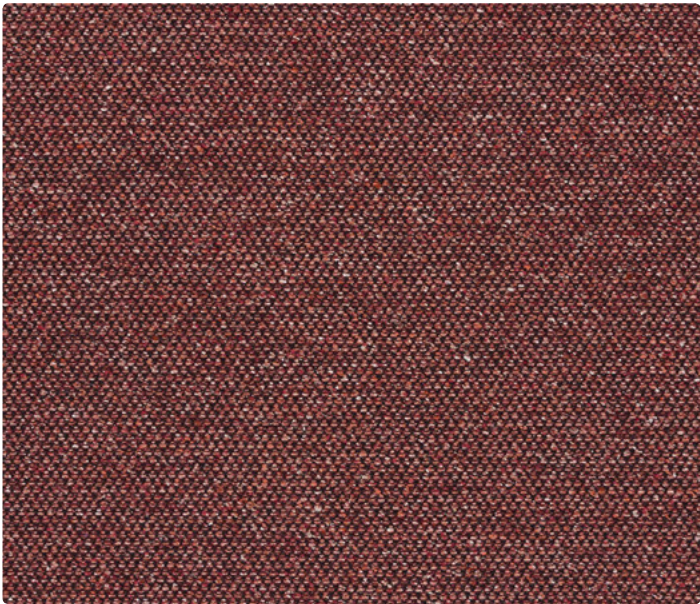
Authority 4035-05



Dashing 4035-04



Esteem 4035-03



Ardent 4077-05



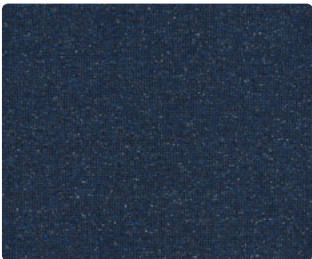
Austere 4077-03



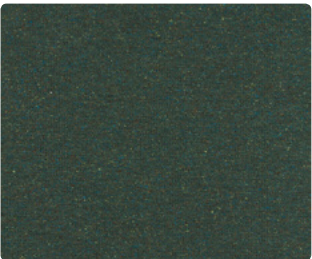
Blithe 4077-01



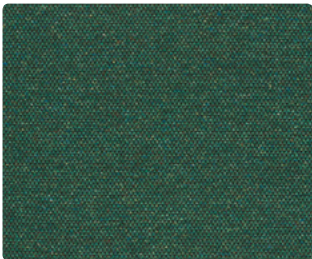
Guild 4035-11



Noble 4035-13



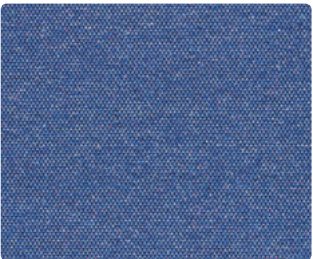
Pinnacle 4035-12



Charm 4077-10



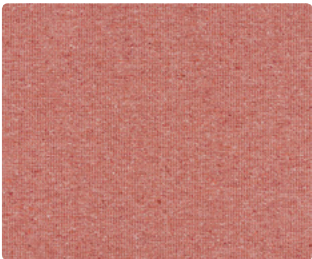
Crest 4077-12



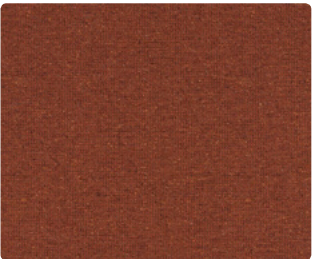
Deft 4077-11



Respect 4035-01



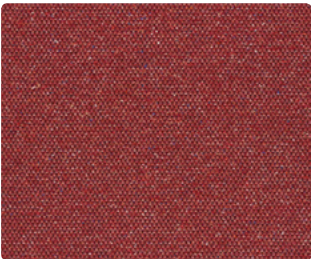
Sanguine 4035-09



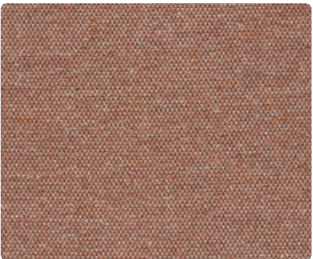
Soigne 4035-07



Earnest 4077-04



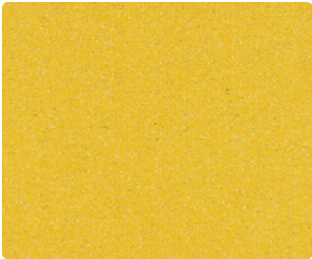
Fervor 4077-06



Finesse 4077-07



Valor 4035-08



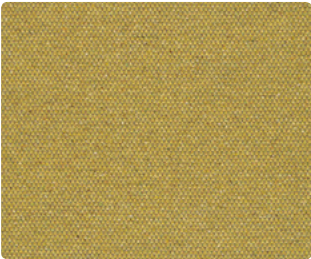
Vivant 4035-10



Winsome 4035-02



Flourish 4077-09



Mettle 4077-08



Salient 4077-02

Homage
Oeuvre



Homage & Oeuvre
by Luum

Honoring textiles of the 20th century, Oeuvre and Homage incorporate natural and synthetic fibers to create a visually tactile multipurpose experience. From handwoven drafts through industrial prototypes, to the final product, our process highlights the link between the hand and manufacturing. These multifaceted products bring dimensional quality while emulating volume and texture. The color palettes complement each other and create dynamic opportunities for experimentation. Oeuvre and Homage also address color and performance needs for both vertical and upholstery uses.

Specification

Homage
4035

Upholstery
Wrapped Wall

Content: 35% Wool +
21% Nylon + 18% Polyester +
14% Silk + 12% Cotton

Origin: Italy

Weight: 16.12 oz/ly
Width: 55"
Repeat: None
Directional: Yes

Abrasion: : ASTM D4157 Wyzenbeek 100,000 double rubs
Breaking Strength: ASTM D5034 Warp 193.9 lbf, Fill 141.3 lbf
Seam Slippage: ASTM D4034 Warp 54.7 lbf, Fill 29.3 lbf
Colorfastness to Light: AATCC 16, Grade 4 at 40 Hours
Colorfastness to Crocking: AATCC 8, Wet Class 4-5, Dry Class 4-5
Pilling: ASTM D3511 (Brush Pill), Class 3
Acoustical Rating: Fabric Transparency 0.65, NRC 0.65 tested to ISO 10534-2 standards
Flame Retardancy: Cal TB 117-2013, ASTM E84 Unadhered Class B or 2
Finish: None
Maintenance: S, Clean with a dry cleaning or solvent-based cleaning agent. Do not use water-based cleaning products.
Environmental: Heavy Metal Free



Oeuvre
4077

Upholstery
Wrapped Wall

Content: 30% Wool +
22% Polyester + 18% Nylon +
18% Cotton + 12% Silk

Origin: Italy

Weight: 13.18 oz/ly
Width: 55"
Repeat: None
Directional: Yes

Abrasion: : ASTM D4157 Wyzenbeek 100,000 double rubs
Breaking Strength: ASTM D5034 Warp 172.9 lbf, Fill 88.9 lbf
Seam Slippage: ASTM D4034 Warp 57.3 lbf, Fill 50.1 lbf
Colorfastness to Light: AATCC 16, Grade 5 at 40 Hours
Colorfastness to Crocking: AATCC 8, Wet Class 4-5, Dry Class 5
Pilling: ASTM D3511 (Brush Pill), Class 3
Acoustical Rating: Fabric Transparency 0.65, NRC 0.60 tested to ISO 10534-2 standards
Flame Retardancy: Cal TB 117-2013, ASTM E84 Unadhered Class B or 2
Finish: None
Maintenance: S, Clean with a dry cleaning or solvent-based cleaning agent. Do not use water-based cleaning products.
Environmental: Heavy Metal Free



Dye lots may vary slightly from samples shown.

All samples shown off the bolt.

Canada
877.705.LUUM
luumtextiles.ca

USA
877.705.LUUM
luumtextiles.com

International
919.464.2922
luumtextiles.com

cdn/us/int/09/19

© Lummm™ 2019, all rights reserved.
®,™ Trademarks used under license by Luum™, Homage™, Oeuvre™
*Certification marks owned by the Association for Contract Textiles.

H-U8,O-U7-SC-305-HOMOEUVRE