

teknion

aarea

Tailoring meets engineering, innovated through second-life materials. Designed by Pearson Lloyd for Teknion, Aarea is familiar and welcoming, intuitive and ergonomic in use, and made with a minimum of components and materials, which speaks to the ingenuity and intelligence of the chair's design. Aarea's mélange knit back is fabricated from retrieved marine plastic to minimize virgin materials and waste. The knit back is flexible and readily conforms to the shape of the body, creating seamless support through the tensions inherent in the knit. The knit back is made to size, creating no additional cut-off waste. A cushioned seat and angled armrests further enhance comfort and wellbeing for all users throughout a workday.

Available in three styles – conference, casual lounge, and worklounge – Aarea has solutions for the modern workplace.





WORKLOUNGE

overall dimensions:

w 34.5"

d 25.5"

h 47.5"-51.5" (high back),  
37"-41" (mid back)

arm height from seat: 8"

seat

w 23.5"

d 20"

h 16.5"-20.5"

height adjustment lever

adjustment range: 4"

synchro tilt mechanism with  
3 position tilt and lock

4-star base with glides

designed and tested  
for users up to 300lbs

also available in mid-back:



CASUAL LOUNGE

overall dimensions:

w 34.5"

d 27.5"

4-leg metal & wood height

high back 47"

mid-back 36.5"

4-star base height

high back 47.5"-51.5"

mid-back 37"-41"

arm height from seat: 8"

seat

w 23.5"

d 20"

4-leg metal & wood

h 18"

4-star base

h 16.5"-20.5"

alternate 4-star base:

alternate wood leg:

simple swivel mechanism

optional universal tablet  
(on 4-star base model only):

for left- and right-handed users  
surface dimensions: w 21.8" x 13"  
surface pivot: 360°x  
tablet arm pivot relative to seat: 132°x

CONFERENCE

overall dimensions:

4-star base & 5-star base

w 27.5"

d 26"

h 36"-40"

arm height from seat: 8.5"

seat

w 21"

d 18"

h 16.5"-20.5"

simple swivel tilt mechanism  
with tilt lock

height adjustment lever

adjustment range: 4"

(range limited when used  
with tablet option)

5-star base with  
casters or glides

alternate 4-star base  
with casters or glides:



optional universal tablet:



for left- or right-handed users  
surface dimensions: w 21.8" x 13"  
surface pivot: 360°x  
tablet arm pivot relative to seat: 132°x

OTTOMAN

overall dimensions:

4-star base & 5-star base

w 30"

d 30"

h 16.5"-20.5"

wood leg & metal leg

w 21"

d 21"

h 18"

4-star base

height adjustment lever

adjustment range: 4"

alternate 5-star base:

alternate wood leg:

alternate metal leg:

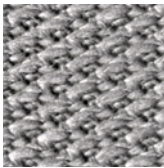


# MÉLANGE KNIT

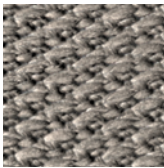
Rarea's mélange knit back is fabricated from retrieved marine plastic to minimize virgin materials and waste. The knit back is flexible and readily conforms to the shape of the body, creating seamless support through the tensions inherent in the knit. The knit back is made to size, creating no additional cut-off waste.

## COMPONENT FINISHES

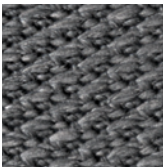
- seat + armrest + headrest | luum upholstery
- metal base + tablet arm | foundation, mica & accent paints
- wood leg | chroma wood & veneer subsets
- tablet surface | foundation & grade 2 laminates



pearl



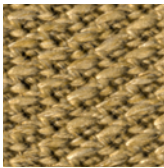
pebble



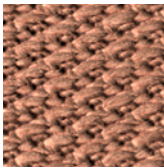
charcoal



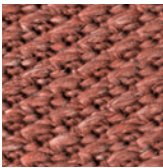
onyx



ochre



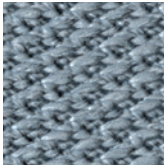
maple



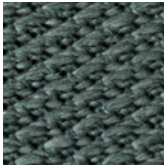
umber



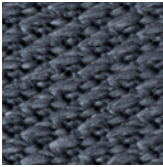
peat



cliffside



pine



celestial

environmental certifications



rating system compliance



LIVING  
BUILDING  
CHALLENGE™



material transparency & product lifecycle

Declare.

divert

