

LUUM

Structural Dimension Collection

09 — 2022



Structural Dimension Collection

What we build together creates the shape of our future. The *Structural Dimension* collection by Suzanne Tick is a grouping of four textiles that encourages us to explore a deeper vision of how spaces can be built. Multi-dimensional structures and classic building materials are created using fiber and construction technology, facilitating connection between users in the interior and providing opportunities for breaks from the use of two-dimensional screens. At once tactile and colorful, each textile in the *Structural Dimension* collection awakens the subtlety of our senses using the dimensional craft of weaving.

Inspired by expressionist color palettes and shapes found in architecture, weaving, felting and knitting techniques are used to promote flexibility and performance, which bring the essence of the exterior into the interior in new ways. Highlighting the integral role textiles play in the overall dimensionality of a space, *Structural Dimension* functions as a fully integrated toolkit for upholstery, wrapped walls, screens and direct glue wall applications.



1. Graph Speck



1. Graph Speck

Collection: Structural Dimension
Designer: Suzanne Tick

Use: Upholstery

Developed on the Tick Studio loom, *Graph Speck* breathes new life into discarded wool, acrylic, and polyester through each of its 16 colorways—emulating the angles of architecture with sustainable yarn-spinning practices. *Graph Speck* shreds pre- and post-consumer recycled garments into colorful fibers, transforming them into complex melange yarns with purpose and precision.

1 ——— Graph Speck

Content: 51% Recycled Wool + 39% Recycled Acrylic + 10% Recycled Polyester
(Pre-Consumer & Post-Consumer)

Number of Colorways: 16

(shown on chair): Waterwheel

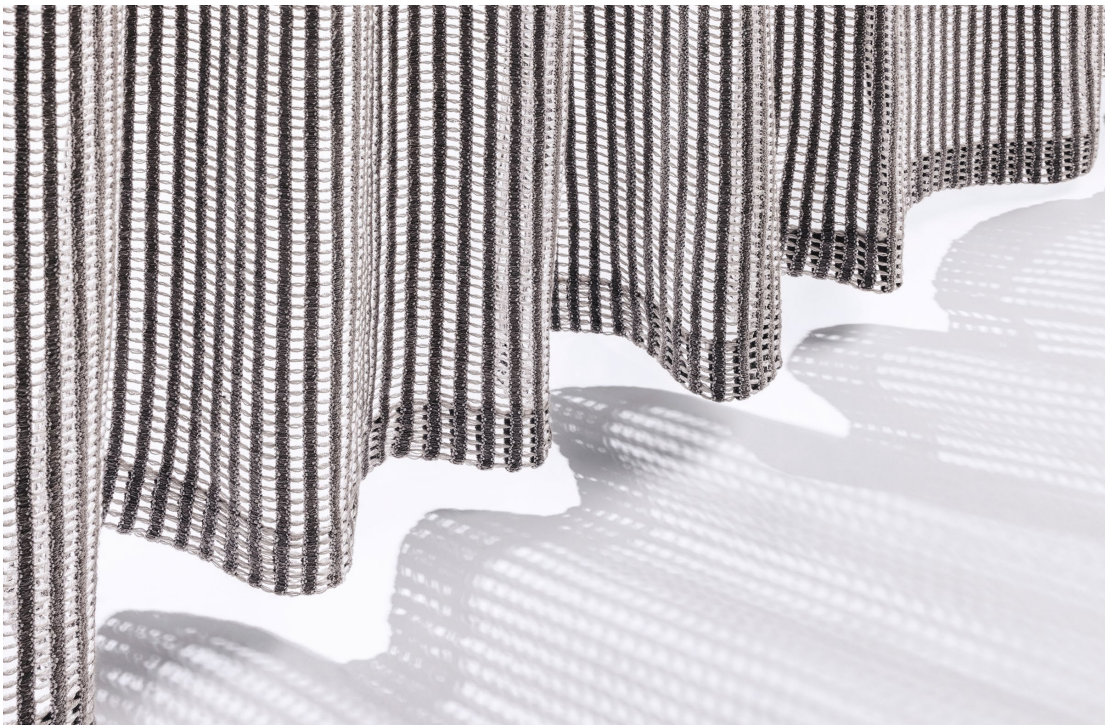
(shown on previous page, top to bottom): Breccia, Gypsum, Cob, Stonework, Earthworks

Abrasion: Martindale 110,000 cycles

Special Characteristics: Recycled Content, Heavy Metal Free, REACH Regulation Compliant, Renewable Content

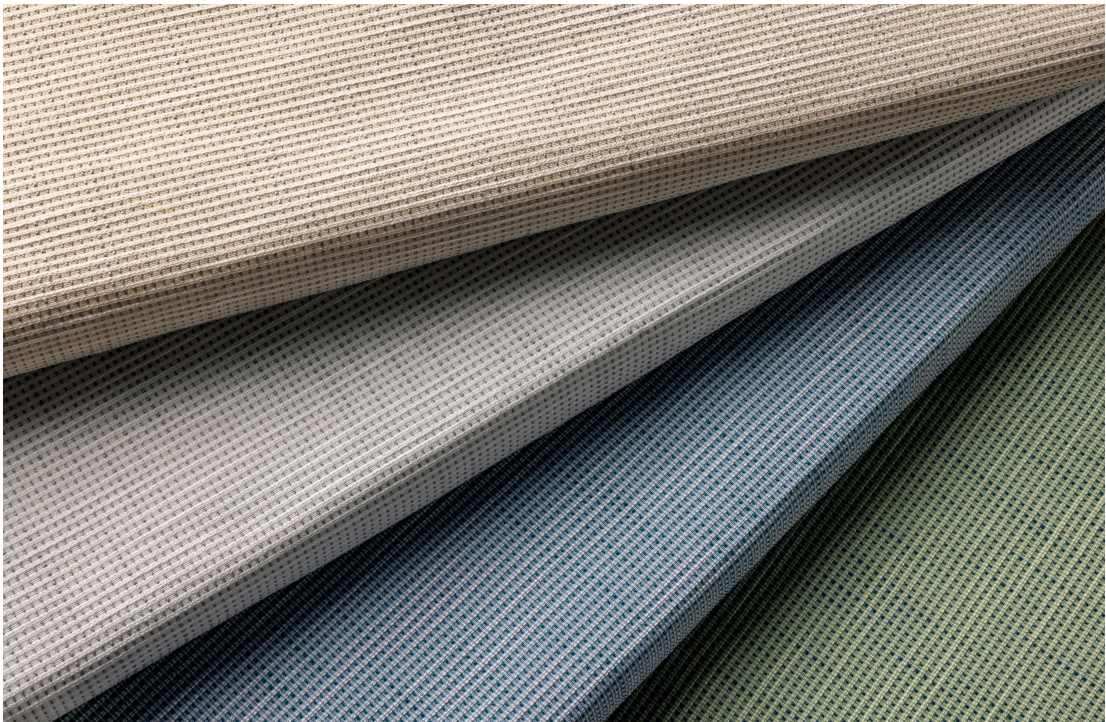
The textile's broken twill structure uses a color and weave effect to tailor dimensional multi-color patterns that coordinate directly with its predecessors, *Wool Fleck* and *Melange Check*. *Graph Speck* extends Luum's color offering from past to present—creating more opportunities for color, texture, and pattern within any space.





3. Newknit

4. Impression



2 — Full Wool

Full Wool is a felted 100% wool upholstery and wrapped wall textile that harnesses the versatile properties of wool. This foundational building material is created when wool fibers are closely entwined together in the weaving process and then treated to create a felted surface, giving it a soft finish. *Full Wool* is highly upholsterable, fire retardant, hypoallergenic and biodegradable. With a revived palette of 22 colors, this textile meets the demand for a rich and woolen textile with a thick and cushioned surface. This staple textile is appropriate for use on all types of seating and wrapped walls and is colored to coordinate with textiles past and present for applications in workplace, hospitality and education environments.

Use: Upholstery / Wrapped Wall

Content: 100% Wool

Number of Colorways: 22

(shown on page six, top to bottom): London Fog, Seashell, Starfruit, Eclair, Tigerlily, Vintage Red

Abrasion: Martindale 50,000 cycles

Special Characteristics: Chemical Finish Free, EU Ecolabel, Heavy Metal Free, Oeko-Tex 100 Certified

3 — Newknit

Newknit drapery's warp knit construction is inspired by mid-century openweave work from artist and weaver Dorothy Liebes. Warp knitting is a technique that combines the soft hand of knitting with the stability of a woven fabric, giving *Newknit* a balanced, grid pattern that evokes the tectonic structure of architecture. Light in form but technical in construction, this drapery contains three individual warp yarns in the vertical, lending a multi-color, dimensional effect in conversation with the yarn floats running across the horizontal. *Newknit*'s 8 colorways and pliant hand add a sculpted and textural effect to a space, whether installed on its own or layered with other draperies.

Use: Drapery

Content: 91% Trevira® CS Polyester + 9% Polyester

Number of Colorways: 5

(shown on previous page): Wireframe

4 — Impression

Unique in its construction, *Impression* is a textural, direct-glue wall-covering woven on a double beam loom. Its complex weave structure and multi-color warp setup use a combination of slub yarns and straight yarns to create a variegated sense of movement across vertical and horizontal planes—with partially-recycled polyester slub yarns planted in the warp and weft direction to create an organic and dimensional pattern. *Impression*'s seven bleach cleanable colorways range from neutrals to soft blues and greens, all featuring a woven surface and warm grasscloth aesthetic.

Use: Direct Glue

Content: 41% Recycled Polyester (Post-Consumer) + 59% Polyester

Number of Colorways: 7

(shown on previous page, top to bottom): Reed, Pampas, River Oats, Willow

Special Characteristics: Bleach Cleanable, Recycled Content