

**Name**  
Wool Fleck

**Designer**  
Suzanne Tick

**Style No.**  
4099

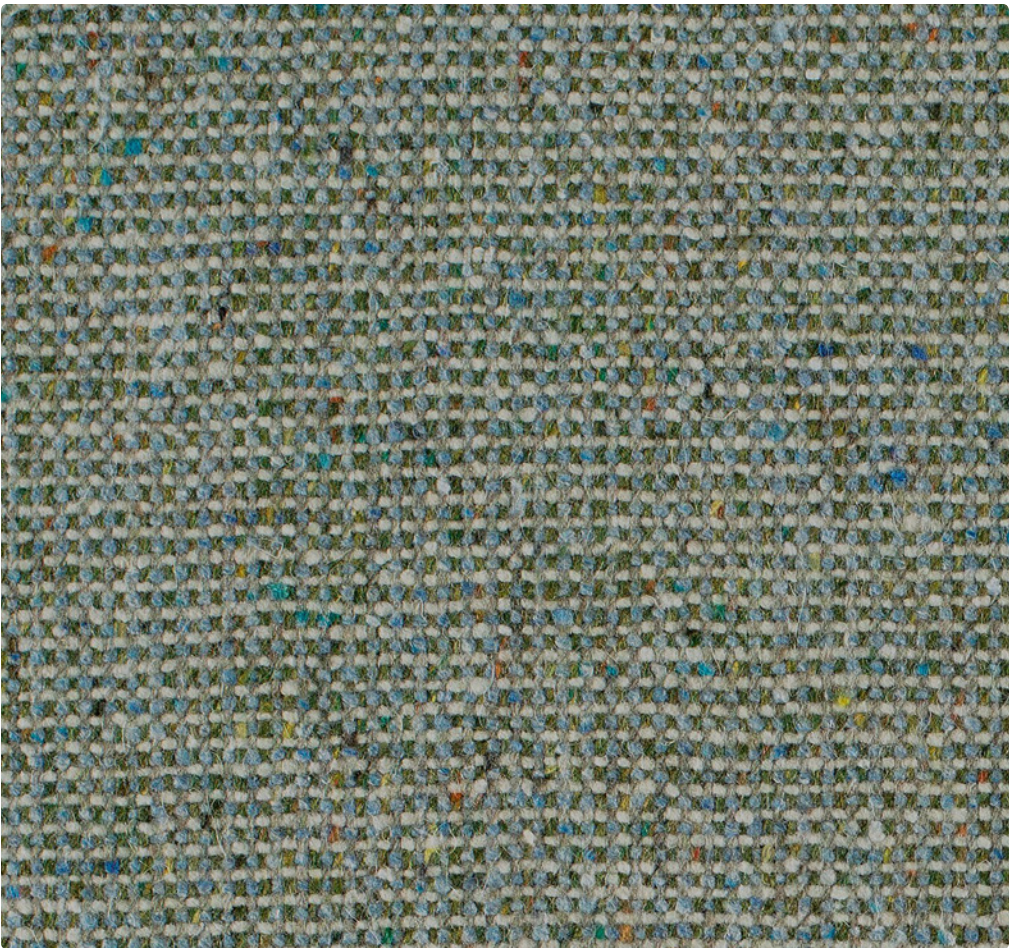
**Collection**  
Shared Ground

**Use**  
Upholstery

**Content**  
51% Recycled Wool +  
39% Recycled Acrylic +  
10% Recycled Polyester

**Abrasion**  
Martindale  
110,000 cycles

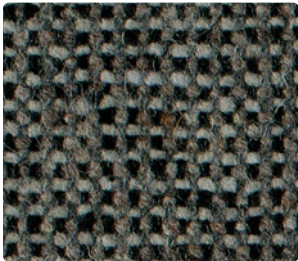
**Environmental**  
Recycled Content  
Renewable Content  
Heavy Metal Free  
REACH Regulation  
Compliant



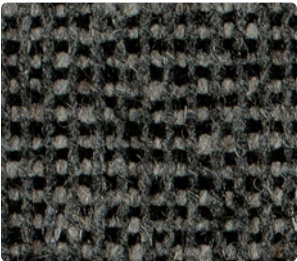
Oat Grass 4099-19



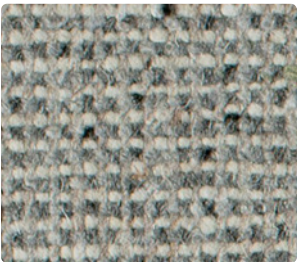
Coquina 4099-05



Packstone 4099-02



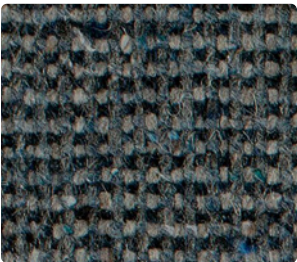
Boulder 4099-01



Micrite 4099-04



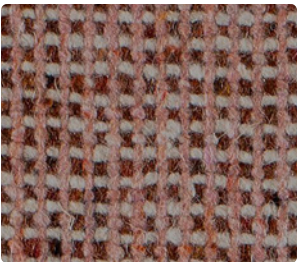
Zinc 4099-03



Mussel Dust 4099-14



Birchbark 4099-10



Pink Nacre 4099-09



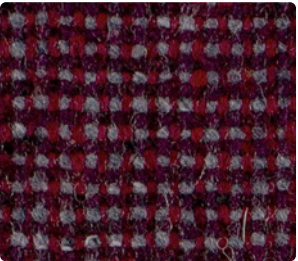
Firesand 4099-11



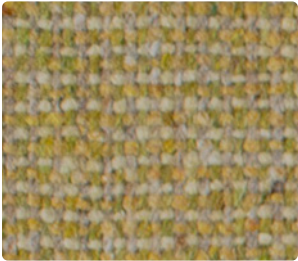
Tawny 4099-07



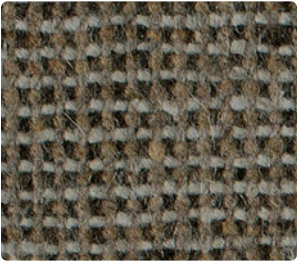
Corten 4099-08



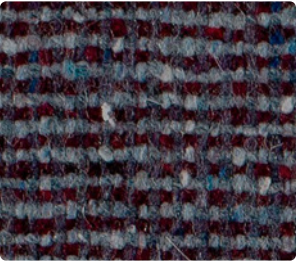
Chamotte 4099-12



Wild Mustard 4099-21



Beachrock 4099-06



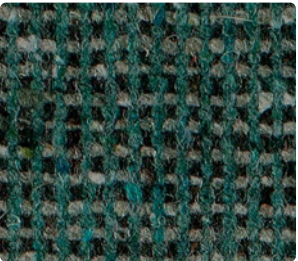
Blackberry 4099-13



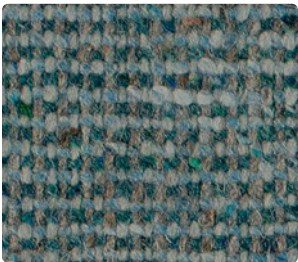
Oat Grass 4099-19



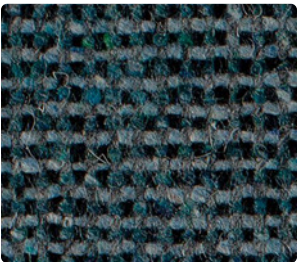
Aloe 4099-20



Bittercress 4099-18



Gitti 4099-15

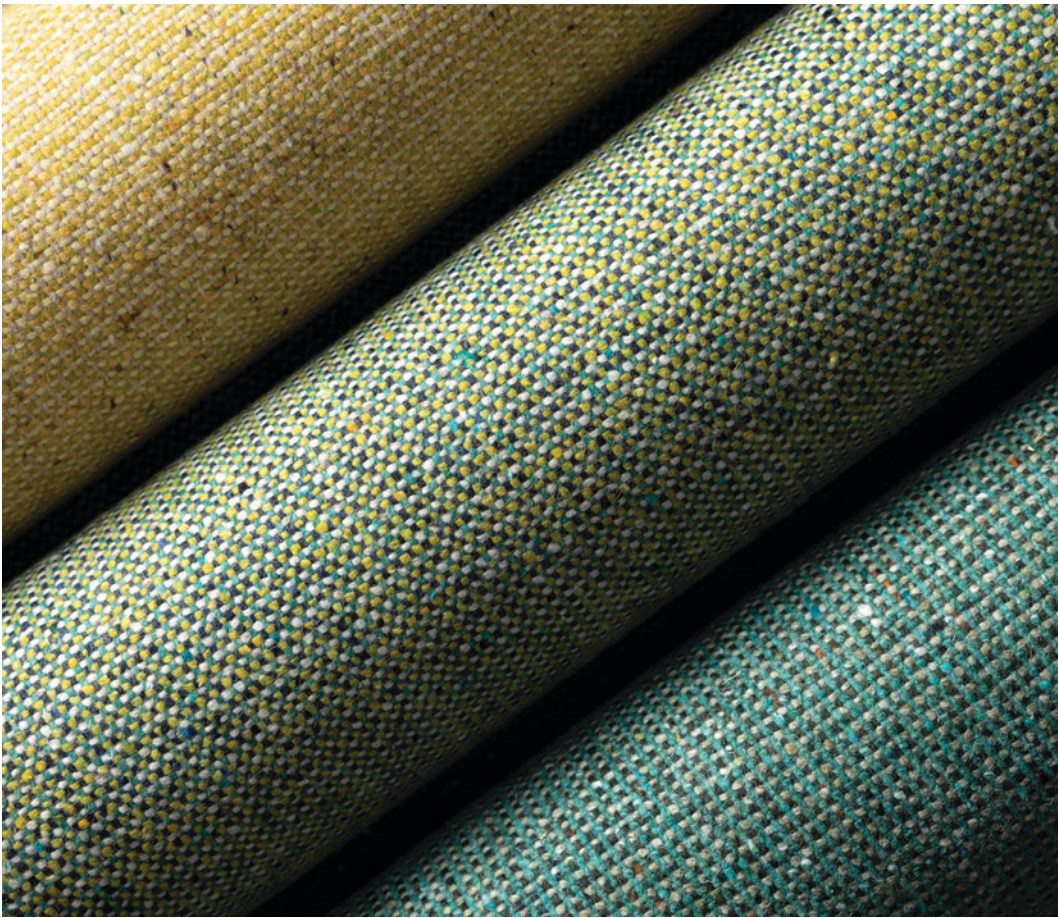


Iolite 4099-16



Storm Petrel 4099-17





# Wool Fleck by Luum

Developed on the Tick Studio loom, Wool Fleck modernizes the plain weave structure, transforming it with vivid color combinations. Using pre- and post-consumer recycled wool, acrylic and polyester, each colorway begins its second life when discarded garments and postindustrial textile waste are shredded back into fiber according to content. Multiple colors of the resulting fiber are mixed into a precise formula and spun together to create complex melange yarns. Dimensional color interactions emerge in the weaving process resulting in a soft, woolen textile for contract and hospitality interiors that minimize environmental impact. Wool Fleck's 21 colorways coordinate directly with Melange Check, the large scale plaid, which derived from the same handwoven weave blanket as Wool Fleck.

Name

Wool Fleck

Style No.

4099



Designer

Suzanne Tick

Specification

**Use:** Upholstery  
**Content:** 51% Recycled Wool + 39% Recycled Acrylic + 10% Recycled Polyester (Preconsumer & Postconsumer)  
**Weight:** 21.6 oz per linear yard  
**Width:** 55"  
**Pattern Repeat:** None  
**Directional:** Yes

Finish

Acrylic Backing

Performance

**Abrasion:** ASTM D4966 Martindale 110,000 cycles  
**Breaking Strength:** ASTM D5034 Warp 91.5 lbf, Fill 88.5 lbf  
**Seam Slippage:** ASTM D4034 Warp 47.4 lbf, Fill 47.6 lbf  
**Colorfastness to Light:** AATCC 16, Grade 5 at 40 Hours  
**Colorfastness to Crocking:** AATCC 8, Wet Class 4-5, Dry Class 4-5  
**Pilling:** ASTM D3511 (Brush Pill), Class 3

Flame Retardancy

Cal TB 117-2013

Maintenance

S, Clean with a dry cleaning or solvent-based cleaning agent.  
Do not use water-based cleaning products.

Environmental

Recycled Content  
Renewable Content  
Heavy Metal Free  
REACH Regulation Compliant

Origin

Italy  
  
Wool is a natural product.  
Color variations are part of the natural beauty of wool and are not considered a defect.  
Dye lots may vary slightly from samples shown. Samples shown off the bolt.



**Canada**

877.705.LUUM  
luumtextiles.ca

**USA**

877.705.LUUM  
luumtextiles.com

**International**

919.464.2922  
luumtextiles.com

cdn/us/int/02-22

© Luum™ 2022, all rights reserved.  
\*,™ Trademarks used under license by Luum™, Wool Fleck™  
\*Certification Marks owned by the Association for Contract Textiles, Inc.

U7-SC-305-4099