

LUUM

Name
Lithoprint

Designer
Suzanne Tick

Style No.
4128

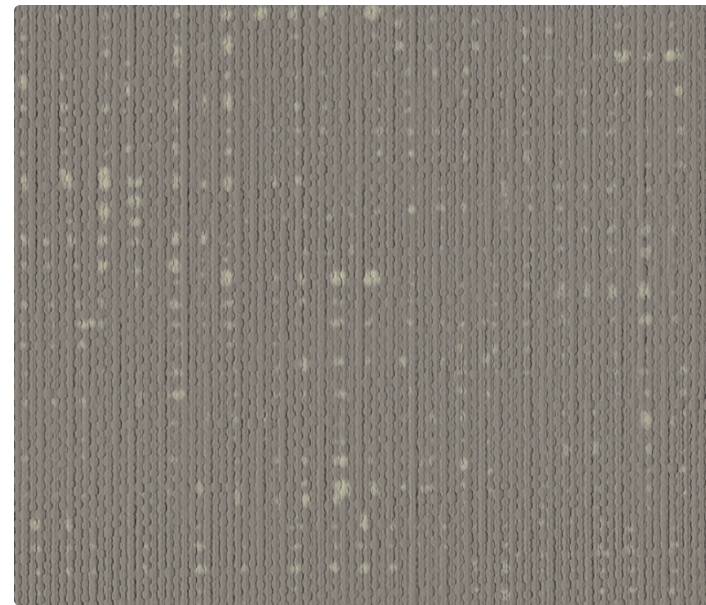
Collection
Kinetic Energy

Use
Upholstery

Content
Face: 95% Polycarbonate Polyurethane, 5% Silicone
Back: 100% Polyester Knit

Abrasion
Wyzenbeek
100,000 double rubs

Environmental
Heavy Metal Free
PVC Free



Chocolate Opal 4128-05



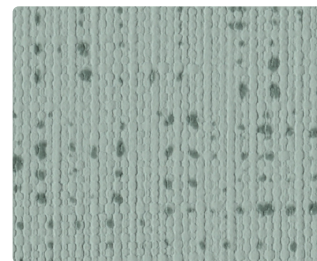
Zinc 4128-01



Cloudy Crystal 4128-02



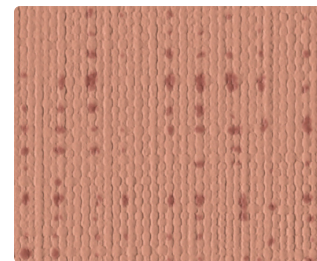
Citrine 4128-08



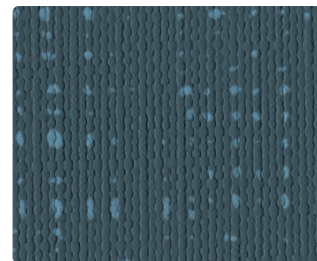
Jadeite 4128-09



Weathered Stone 4128-03



Pampel 4128-07



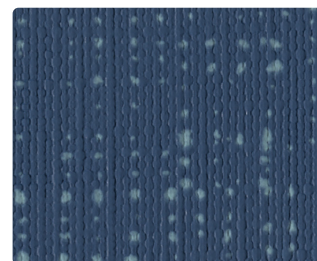
Sea Pearl 4128-10



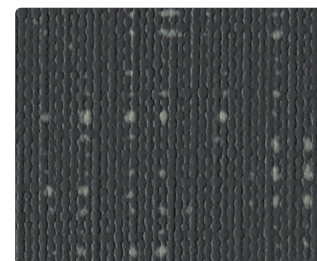
Space Rock 4128-04



Tiger's Eye 4128-06



Marquise 4128-11



Nephrite 4128-12

Name ————— **Lithoprint**

Style No. ————— **4128**

Designer Suzanne Tick

Specification

Use: Upholstery
Content: Face: 95% Polycarbonate Polyurethane + 5% Silicone
 Back: 100% Polyester Knit
Weight: 15.5 oz per linear yard
Width: 54"
Pattern Repeat: 22.5" Horizontal, 18" Vertical
Directional: Yes

Finish Inherently Ink and Stain Resistant

Performance

Abrasion: ASTM D4157 Wyzenbeek 100,000 double rubs
Print Retention: ASTM D3389 Grade 5
Adhesion of Coating: ASTM D751 Warp 7.9 lbf, Fill 230.5 lbf
Tear Strength: ASTM D2261 Warp 5.3 lbf, Fill 8.7 lbf
Breaking Strength: ASTM D5034 Warp 88.3 lbf, Fill 91.3 lbf
Seam Strength: ASTM D751 Warp 45.3 lbf, Fill 41.7 lbf
Flex Resistance: ASTM D2097 No Cracking
Hydrolysis Resistance: ISO 1419, 15 weeks
Colorfastness to Light: AATCC 16, Grade 4-5 at 200 Hours
Colorfastness to Crocking: AATCC 8, Wet Class 5, Dry Class 5

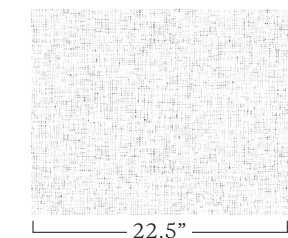
Flame Retardancy Cal TB 117-2013, NFPA 260, UFAC Class 1

Maintenance W, Clean with a water-based cleaning agent. Do not use solvent products.
 Bleach Cleanable: 9% (10:1 Ratio), wipe with water after solution.

Environmental Heavy Metal Free
PVC Free

Origin USA

Dye lots may vary slightly from samples shown. Samples shown off the bolt.



Graphic shows one full repeat.

Canada
877.705.LUUM
luumtextiles.ca

USA
877.705.LUUM
luumtextiles.com

International
919.464.2922
luumtextiles.com

cdn/us/int/09-24

© Luum™ 2024, all rights reserved.
 *,™ Trademarks used under license by Luum™, Lithoprint™
 *Certification Marks owned by the Association for Contract Textiles, Inc.
 Abrasion test results exceeding ACT Performance Guidelines are not an indicator of product lifespan.
 Multiple factors affect fabric durability and appearance retention.

U4-SC-305-4128