

**Name**

Subtle Stria

**Designer**

Suzanne Tick

**Style No.**

4133

**Collection**

Unified Field

**Use**

Upholstery

**Content**

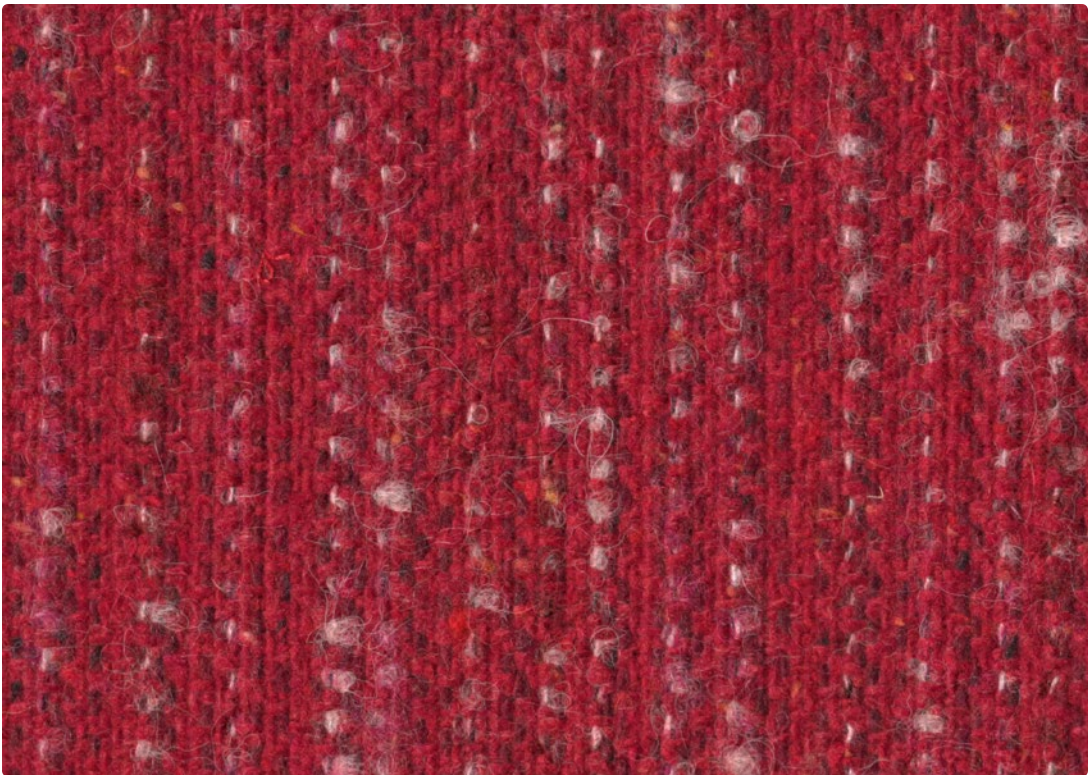
45% Recycled Wool,  
34% Recycled Acrylic,  
9.5% Recycled Polyester,  
2.5% Polyester, 6% Wool,  
2% Alpaca, 1% Nylon

**Abrasion**

Martindale  
90,000 cycles

**Environmental**

Recycled Content  
Renewable Content  
Heavy Metal Free



Tease 4133-07



Finespun 4133-04



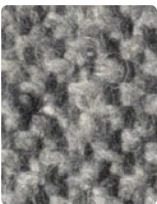
Murmur 4133-08



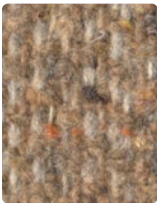
Dulcet 4133-11



Humbug 4133-15



Insight 4133-03



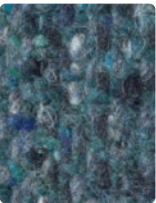
Craft 4133-05



Keen 4133-09



Secret 4133-12



Serene 4133-14



Undertone 4133-02



Trifle 4133-06



Refined 4133-10



Confidential 4133-13



Quell 4133-16



Nought 4133-01

Name

Subtle Stria

Style No.

4133

Designer

Suzanne Tick

Specification

Use: Upholstery  
Content: 45% Recycled Wool, 34% Recycled Acrylic, 9.5% Recycled Polyester, 2.5% Polyester, 6% Wool, 2% Alpaca, 1% Nylon (Pre Consumer & Post Consumer)  
Weight: 24.18 oz per linear yard  
Width: 55"  
Pattern Repeat: None  
Directional: Yes

Finish

Acrylic Backing

Performance

Abrasion: ASTM D4966 Martindale 90,000 cycles  
Breaking Strength: ASTM D5034 Warp 95 lbf, Fill 57 lbf  
Seam Slippage: ASTM D4034 Warp 76 lbf, Fill 68 lbf  
Colorfastness to Light: AATCC 16, Grade 5 at 40 Hours  
Colorfastness to Crocking: AATCC 8, Wet Class 4-5, Dry Class 4-5  
Pilling: ASTM D4970 (Martindale), Class 4

Flame Retardancy

Cal TB 117-2013

Maintenance

S, Clean with a dry cleaning or solvent-based cleaning agent.  
Do not use water-based cleaning products.

Environmental

Recycled Content  
Renewable Content  
Heavy Metal Free

Origin

Italy

Dye lots may vary slightly from samples shown. Samples shown off the bolt. Wool is a natural product. Color variations are part of the natural beauty of wool and are not considered a defect.



Canada

877.705.LUUM  
luumtextiles.ca

USA

877.705.LUUM  
luumtextiles.com

International

919.464.2922  
luumtextiles.com

cdn/us/int/05-25

© Luum™ 2025, all rights reserved.  
\*,™ Trademarks used under license by Luum™, Subtle Stria™  
\*Certification Marks owned by the Association for Contract Textiles, Inc.  
Abrasion test results exceeding ACT Performance Guidelines are not an indicator of product lifespan.  
Multiple factors affect fabric durability and appearance retention.

U7-SC-305-4133