

LUUM

Construct

Name

Construct

Designer

Suzanne Tick

Style No.

4079

Use

Upholstery

Content

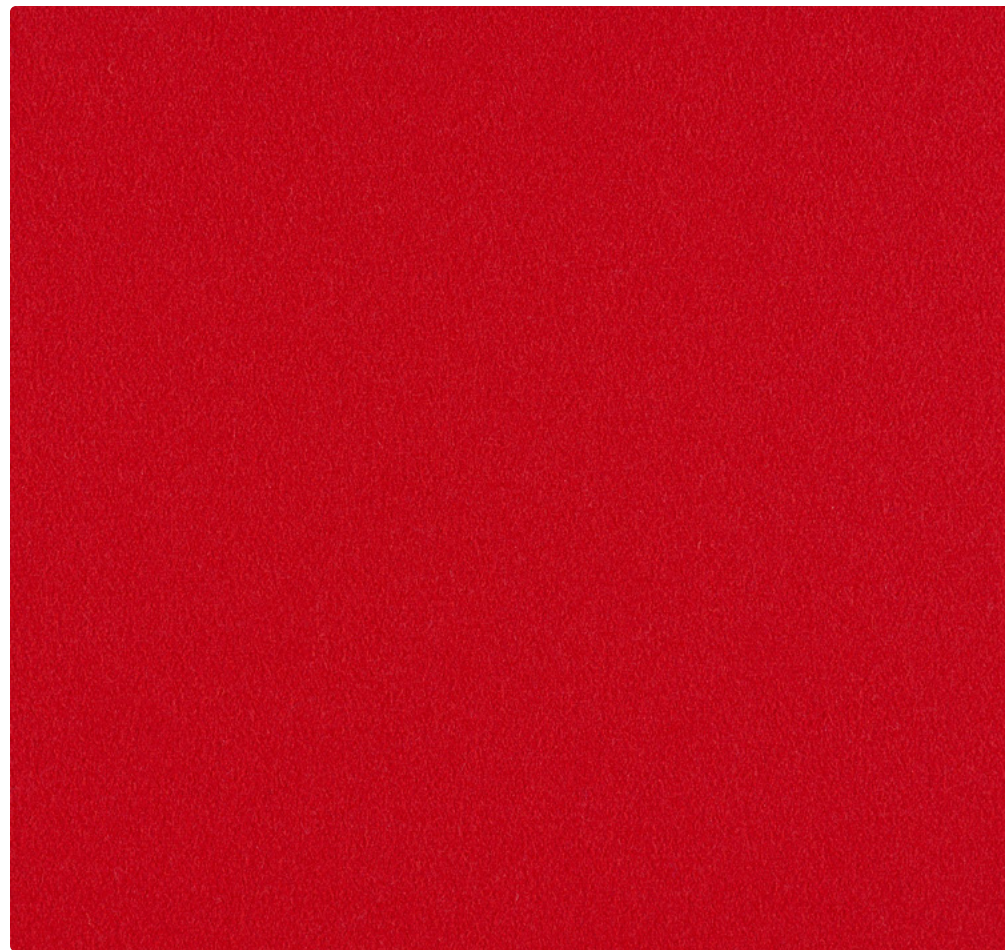
80% Wool + 20% Nylon

Abrasion

Martindale
100,000 cycles

Environmental

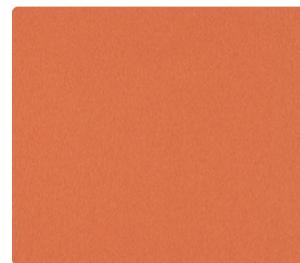
Renewable Content



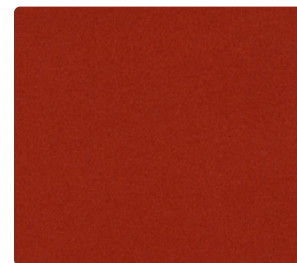
Vermilion 4079-04



Canary 4079-13



Zinnia 4079-06



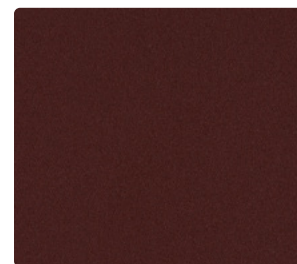
Auburn 4079-07



Turmeric 4079-14



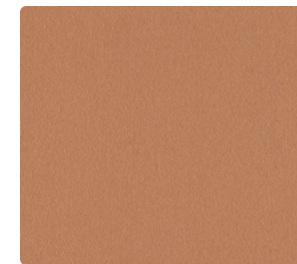
Cadmium Orange 4079-05



Brandy 4079-03



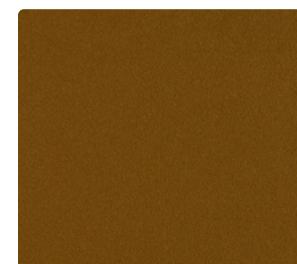
Ochre 4079-15



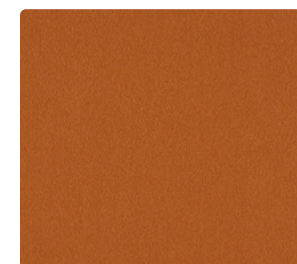
Fawn 4079-01



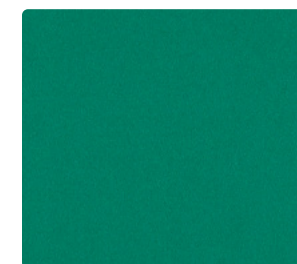
Celadon 4079-12



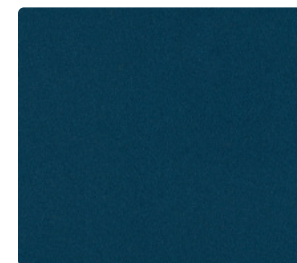
Beryl 4079-16



Clay 4079-02



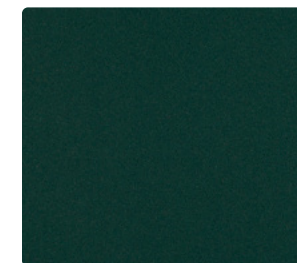
Viridian 4079-17



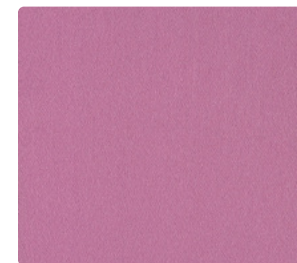
Pacific 4079-11



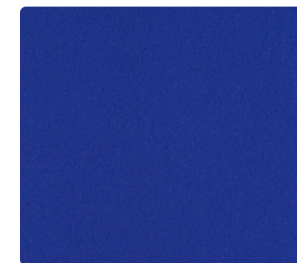
Cornflower 4079-10



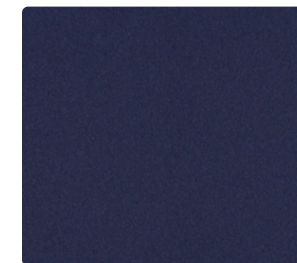
Fir 4079-18



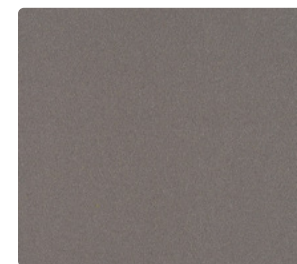
Wisteria 4079-08



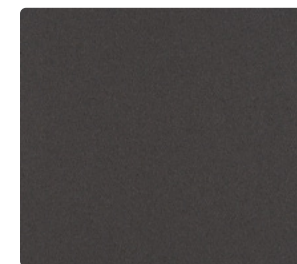
Ultramarine 4079-09



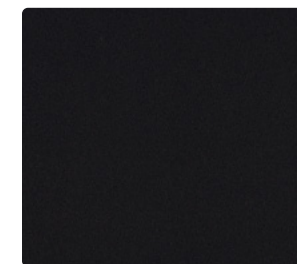
Midnight 4079-19



Argent 4079-20



Gunmetal 4079-21



Noir 4079-22

Construct



Construct by Luum

A celebration of raw materials, Construct elevates the classic wool solid. Construct is a vehicle for color, lending a new lease on design with a wide range of tinted neutrals, rich mainstays and saturated bright hues that are simple, playful and beautiful. The wool fiber's worsted quality has an inherent subtle luster and smooth hand, while the nylon content enhances the intrinsic performance of wool. Highly upholsterable, Construct's durable makeup and palette enhance the look and form of furniture.

Name **Construct**

Style No. **4079**

Designer Suzanne Tick

Specification
Use: Upholstery
Content: 80% Wool + 20% Nylon
Weight: 18.71 oz per linear yard
Width: 55"
Pattern Repeat: None
Directional: No

Finish None

Performance
Abrasion: ASTM D4966 Martindale 100,000 cycles
Breaking Strength: ASTM D5034 Warp 103.7 lbf, Fill 65.4 lbf
Seam Slippage: ASTM D4034 Warp 76.1 lbf, Fill 80 lbf
Colorfastness to Light: AATCC 16, Grade 5 at 40 Hours
Colorfastness to Crocking: AATCC 8, Wet Class 5, Dry Class 5
Pilling: ISO 12945 (Martindale), Class 3

Flame Retardancy Cal TB 117-2013, UFAC Class 1, NFPA 260

Maintenance S, Clean with a dry cleaning or solvent-based cleaning agent.
Do not use water-based cleaning products.

Environmental Renewable Content

Origin Italy

Wool is a natural product.
Color variations are part of the natural beauty of wool and are not considered a defect.
Dye lots may vary slightly from samples shown. Samples shown off the bolt.



Canada
877.705.LUUM
luumtextiles.ca

USA
877.705.LUUM
luumtextiles.com

International
919.464.2922
luumtextiles.com

cdn/us/int/01-20

© Luum™ 2020, all rights reserved.
*,™ Trademarks used under license by Luum™, Construct™
*Certification Marks owned by the Association for Contract Textiles, Inc.

SC-305-4079