

LUUM

Evolutionary Forces Collection



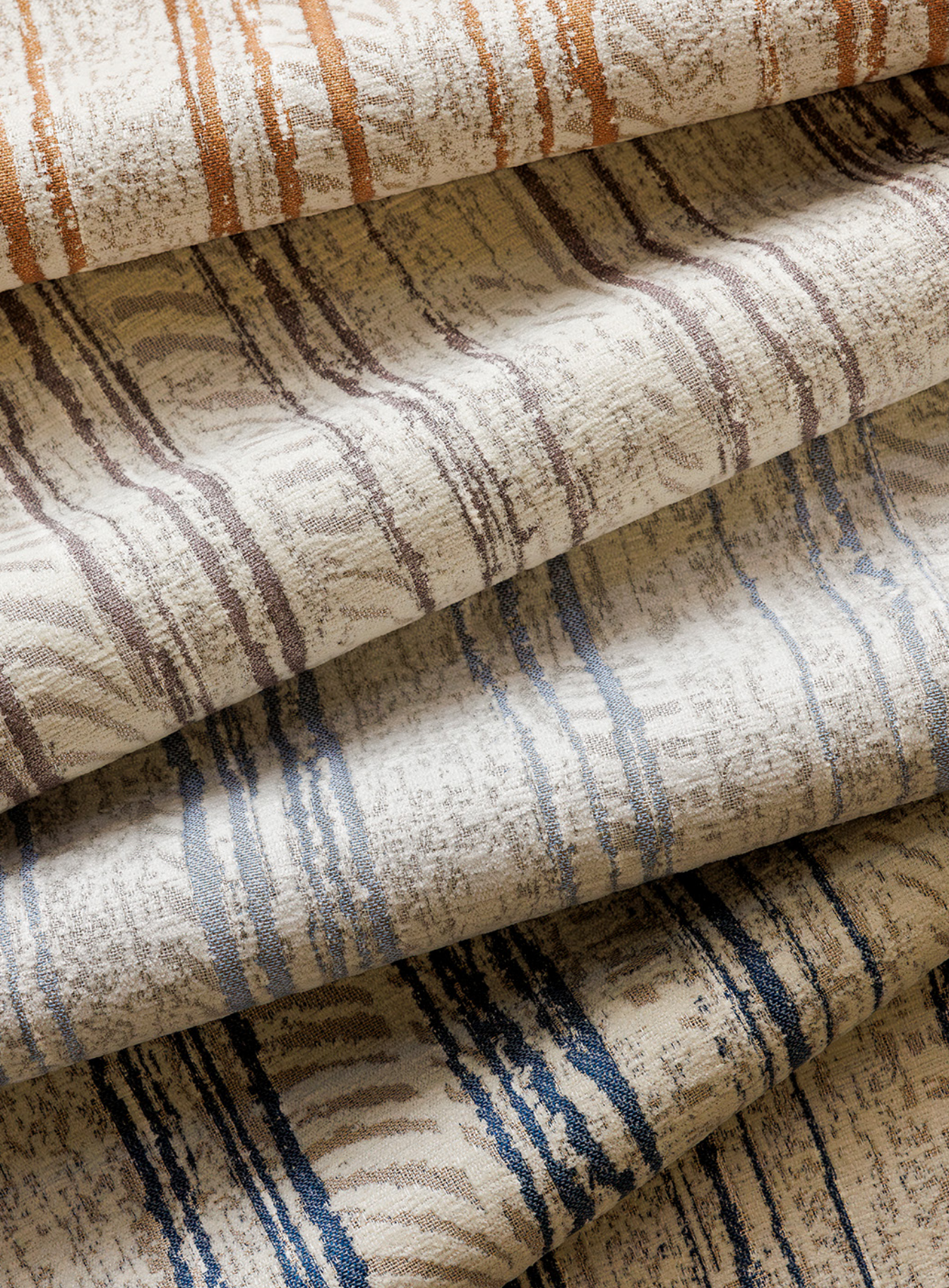
Evolutionary Forces Collection

Evolutionary Forces is a collection of 5 textiles by Suzanne Tick inspired by the natural cycle of evolution: how creation enables equilibrium, which passes to destruction, and allows the next wave to continue.

Featuring new types of recycled materials, an expanding range of multicolor textures, and indoor/outdoor upholstery and drapery with an emphasis on luxury performance—this collection opens up new ways to use the Luum line.

Evolutionary Forces' organic approach to pattern brings color, texture, and comfort to the forefront—grounding spaces in a renewed focus on wellness.





Collection: Evolutionary Forces
Designer: Suzanne Tick

Use: Indoor/Outdoor Upholstery

Adaptation is an indoor/outdoor upholstery inspired by the shape of footpaths on the shore after a winter snowstorm. With its sophisticated winter whites and tones of flora and fauna, this textile expresses the rawness of nature with soothing tactility. Using a soft acrylic chenille, fluid stripe flows down fragmented areas of de-lustered acrylic, bringing a contrasted effect.

1 ——— Adaptation

Content: 100% Acrylic

Number of Colorways: 7 (shown left, top to bottom): Feldspar, Plumrose, Snow Line, Sea Stack

Abrasion: Wyzenbeek 40,000 double rubs

Special Characteristics: Bleach Cleanable, PFAS Free Stain Repellent, North American Made, Indoor/Outdoor



2 — Cognition

Textural in surface, *Cognition* is an indoor/outdoor upholstery with softness and appeal made for many applications where cleanability is key: light-filled atriums, rooftop seating, and even healthcare. *Cognition's* bleach cleanable, multicolor boucle surface comes in nine diverse colorways—featuring warm neutrals, vibrant greens and blues, rich charcoals, and a bright pink.

Use: Indoor/Outdoor Upholstery

Content: 61% Polypropylene, 39% Acrylic

Number of Colorways: 9 (*shown here, top to bottom*): Sapien, Concentrate, Mull Over, Level Headed, Brainstorm

Abrasion: Wyzenbeek 30,000 double rubs

Special Characteristics: Bleach Cleanable, Indoor/Outdoor

3 — Unbounded

Unbounded is an all-over multipurpose textile that uses recycled SEAQUAL® YARN marine plastic in the warp to create a raw, tactile surface for many applications—weaving a 6-ply twisted habu yarn with chenille yarn for a subtle scattering of color. *Unbounded* works well for upholstery, wrapped walls, panels, and screens, is bleach cleanable and made in North America.

Use: Multipurpose

Content: 50% Polyester, 26% Post Consumer Recycled Polyester, 23% Post Consumer Recycled Polyester SEAQUAL® YARN, 1% Nylon

Number of Colorways: 16 (*shown here, top to bottom*): Janus, Blue Moon, Ceres, Polar Light, Ion, Retrograde, Neptune Diamond

Abrasion: Wyzenbeek 105,000 double rubs

Special Characteristics: Bleach Cleanable, Recycled Content, North American Made

4 — Observation

As Luum's first high-UV drapery, *Observation* creates comfort with a luxe lightweight feel and a range of colorways: ethereal neutrals, tinted clay, sky blue, and eggplant. 130" wide, bleach cleanable and made with 100% high-UV Trevira® CS polyester, *Observation* works for many applications, including covered outdoor patios, indoor atriums, wellness rooms, and more.

Use: Indoor/Outdoor Drapery

Content: 100% Trevira® CS Polyester

Number of Colorways: 7 (*shown here*): Redscale

Special Characteristics: Bleach Cleanable, Indoor/Outdoor

5 — Simplicity

Simplicity's tonal two-color effect comes from its cross-dye formula, which picks up lighter and darker colors in the cationic and disperse fibers to create a contrasted broken twill weave pattern. With a wool-like hand and matte color range, *Simplicity* lends a soft touch wherever it's applied—from social seating to wrapped walls, panels, and screens of all kinds. *Simplicity* is composed of 60% recycled polyester, has a PFAS free stain repellent and is North American made.

Use: Multipurpose

Content: 60% Post Consumer Recycled Polyester, 40% Polyester

Number of Colorways: 20 (*shown here, top to bottom*): Salmon, Greige, Paris Green, Maya Blue, Lazurite

Abrasion: Wyzenbeek 100,000 double rubs

Special Characteristics: Recycled Content, PFAS Free Stain Repellent, North American Made



USA, Canada 877.705.LUUM
International 919.464.2922

luumtextiles.com



4. Observation

2. Cognition



5. Simplicity

