

xpress

u.s.a

01.27.2020



teknion

contents

PROGRAM OVERVIEW

ORDER INFORMATION 2

SYSTEMS

LEVERAGE 6

FREESTANDING SYSTEMS

MARKETPLACE10

SEATING

WORK CHAIRS14

MULTI-USE CHAIRS18

STACKING CHAIRS19

SOFT SEATING20

FILING & STORAGE

LEDGER24

STANDARD STORAGE32

TABLES

THESES36

EXPANSION TRAINING38

EXPANSION CASEGOODS MEETING39

DESKING

EXPANSION DESKING42

CASEGOODS

EXPANSION CASEGOODS46

COMPLEMENTS

ERGONOMIC ACCESSORIES50

WORK FLOW ACCESSORIES56

LIGHTING58

ELECTRICAL59

FABRICS & FINISHES

FINISH LISTING60

program overview

ORDER INFORMATION

ORDERS MUST BE RECEIVED CLEAN AND READY TO BE PROCESSED BY 12:00 PM EASTERN STANDARD/EASTERN DAYLIGHT SAVINGS TIME. ORDERS RECEIVED AND READY TO BE PROCESSED AFTER 12:00 PM EASTERN STANDARD/EASTERN DAYLIGHT SAVINGS TIME WILL BE PROCESSED THE NEXT BUSINESS DAY.

TEKNION'S XPRESS PROGRAM IS DESIGNED TO OFFER EXPEDITED SHIPMENT TO A LARGE BASE OF TEKNION CUSTOMERS NEEDING DELIVERY IN AN ABBREVIATED TIME FRAME. IT IS NOT INTENDED TO REPLACE OUR STANDARD LEAD TIME PRODUCT. FOR THIS REASON, THE FOLLOWING GUIDELINES ARE IN EFFECT:

1. QUANTITIES MAY BE LIMITED ON INDIVIDUAL ITEMS BASED ON PRODUCT AVAILABILITY.

5 DAY PROGRAM:

- SEATING
 - PROGRAM MAXIMUM @ 50 CHAIRS (NON-WOOD)
- EXPANSION TRAINING, EXPANSION CASEGOODS & EXPANSION MEETING
 - PROGRAM MAXIMUM \$25,000 LIST
- EXPANSION DESKING - MAXIMUM \$50,000 LIST
- COMPLEMENTS
 - MAXIMUM 25 ALL ITEMS

10 DAY PROGRAM:

- LEVERAGE
 - PROGRAM MAXIMUM @ \$200,000 LIST
- MARKETPLACE
 - PROGRAM MAXIMUM @ 15 TABLES
- SEATING
 - PROGRAM MAXIMUM @ 25 CHAIRS (WOOD)
- FILING & STORAGE
 - PROGRAM MAXIMUM @ 50 PCS.
- COMPLEMENTS
 - MAXIMUM 5 HEIGHT ADJUSTABLE TABLES
- THESIS – MAXIMUM \$25,000 LIST

ORDERS EXCEEDING THESE MAXIMUMS WILL RECEIVE STANDARD LEAD-TIME.

FOR ORDER QUANTITIES LARGER THAN THE ABOVE MAXIMUMS, PLEASE FOLLOW TEKNION'S ORDER PREVIEW PROCESS.

2. ORDERS CAN ONLY BE ACCEPTED IN THE FABRICS, FINISHES AND SIZES OUTLINED IN TEKNION'S XPRESS PRICE LIST (SPECIAL VARIATIONS CANNOT BE ACCEPTED).

3. ONLY ELECTRONIC ORDERS WILL BE ACCEPTED, E-MAILED TO: XPTEKNIONOE@TEKUS.COM

CHANGES AND CANCELLATIONS

NO CHANGES OR CANCELLATIONS ARE ACCEPTED ON XPRESS ORDERS.

TERMS AND CONDITIONS

ALL OTHER TERMS AND CONDITIONS OF SALE CAN BE ACCESSED BY SELECTING THE LEGAL LINK ON THE TOP NAVIGATION BAR AT TEKNION.COM.

NOT ALL PRODUCTS SHOWN IN THE PHOTOGRAPHY ARE AVAILABLE THROUGH TEKNION XPRESS. PLEASE REFER TO THE SPECIFICATION SOFTWARE FOR COMPLETE PRODUCT OFFERING

Program Overview

5-Day Shipment Highlights

Non-Wood Seating (50 chairs max.), Expansion Training (\$25,000 max.), Expansion Casegoods Meeting (\$25,000 max.), Expansion Desking (\$50,000 max.) & Expansion Casegoods (\$25,000 max.), **Complements, *Thesis.



MONDAY	TUESDAY	WEDNESDAY	THURSDAY	FRIDAY	
Grey boxes represent days allotted for the manufacturing process.		DAY 0 Electronic Orders received by 12:00 noon at Teknion	DAY 1	DAY 2	SATURDAY
					SUNDAY
DAY 3	DAY 4	DAY 5 Order ready for shipment by Teknion			

Teknion business days do **not** include statutory holidays.
Delivery follows standard order shipping schedules.

- * For less than full truckloads, Teknion commonly ships via pool truck. Pool truck shipment may affect actual departure dates.
 - For pool truck schedules, please refer to TekniOnline's transportation maps.
 - For dedicated truck quotes, please contact Customer Service.

**Exclude Height Adjustable Table

10-Day Shipment Highlights

Leverage (\$0-\$200,000), Marketplace (15 tables max.), Wood Seating (25 chairs max.), Filing & Storage (50 pcs. max.) & Complements Height Adjustable Table (5 tables max.)



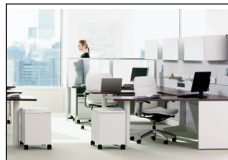
MONDAY	TUESDAY	WEDNESDAY	THURSDAY	FRIDAY	
Grey boxes represent days allotted for the manufacturing process.		DAY 0 Electronic Orders received by 12:00 noon at Teknion	DAY 1	DAY 2	SATURDAY
					SUNDAY
DAY 3	DAY 4	DAY 5	DAY 6	DAY 7	SATURDAY
					SUNDAY
DAY 8	DAY 9	DAY 10 Order ready for shipment by Teknion.			

Teknion business days do **not** include statutory holidays.
Delivery follows standard order shipping schedules.



systems

TEKNION, WITH ITS INNOVATIVE, INTEGRATED LINES OF FURNITURE, HAS BEEN AT THE FOREFRONT OF THE MODERN OFFICE FOR OVER TWO DECADES. THE ADAPTABILITY AND HIGH LEVEL OF FUNCTIONALITY INHERENT IN OUR SYSTEMS ALLOW CLIENTS TO EFFECTIVELY DIVIDE SPACE, CONTROL PRIVACY, AND PROVIDE ERGONOMICALLY CORRECT WORKSTATIONS TO ENHANCE EMPLOYEE COMFORT AND PRODUCTIVITY, AND CREATE A DISTINCTIVE CORPORATE AESTHETIC.



LEVERAGE.....6

Leverage



Leverage makes it easy to customize the office allowing you to specify the desired level of features for each workspace in order to meet diverse needs, while achieving a crisp, clean look at an affordable price.

The workstation examples below have been priced with the following finishes:

Surface Finish:	Foundation Laminate
Edge Trim Style:	Flat Trim
Paint Finish:	Foundation
Fabric:	Grade A (Quad Workstations) Grade 1 (Double Workstation)

Exceptions are listed for each example below.

Quad Workstation (Compact 6' X 6')			Unit	Total
2	KPWS6630	Semi-Segmented Panel - Conventional Frame, 66" h x 30" w Acoustic and Accessory Elements	971	1941
2	KPWS6642	Semi-Segmented Panel - Conventional Frame, 66" h x 42" w Acoustic, Accessory and Power/Comm. Elements	1281	2560
4	KSF11442	Overhead Cabinet, Leverage On-Module Mounting, 14" d x 42" w	602	2410
4	KSS30	Shelf, 30" w	169	678
8	HPS5136	Lyft Thin Panel - Standard, 51" h x 36" w	529	4232
1	HCML66	Mid Run 90 on-module connector/spacer 66" h	197	197
1	HCEL66	End Run 90 connector/spacer, 66" h	206	206
1	KTE66	Panel End Trim, 66" h	37	37
2	HET51	Thin Panel (Lyft) End Trim	24	47
2	KTRC72	Continuous Top Trim, 72" w	79	158
4	KWS2442	Rectangular Worksurface, 24" d x 42" w	291	1166
4	KWS3072	Rectangular Worksurface, 30" d x 72" w	561	2247
2	KFENM24	Flush End Gable, (1 Left, 1 Right)	253	506
4	HEG301	End Gable, 30" d with Panel	305	1221
4	CT22	Cantilever, 22" d (2 Left, 2 Right)	56	222
3	HWB	Fixed Height Thin Panel Mount Bracket (1 pair)	58	173
3	KBC	Corner Bracket	33	98
2	TLFP	Flush Plate	42	87
4	KDNLF2215	Pedestal, Large File, File, 22" d,	611	2441
4	DP150	Pencil Drawer	59	235
4	TU220	Universal Light, Standard Plug	299	1193
1	EKBFB8T72	Base Feed, 8-Wire Isolated Ground, 72" long	283	283
1	EBFQC	Communications Base Feed	36	36
1	EKBH8T024	Power Harness, 8-Wire, Isolated Ground, 24" long	139	139
1	EKBH8T072	Power Harness, 8-Wire, Isolated Ground, 72" long	186	186
2	EKQPD	Power Box, Double	189	378
8	EKR0S	Receptacle Outlet, Standard 15 Amp - CIRCUIT 1	32	253
			Total:	\$ 23331



Lyft Thin Panel Finish:
 - Bottom Fabric - Grade A
 - Top - Translucent

Quad Workstation (Compact 6' X 8')			Unit	Total
2	KPWC4236	Segmented Panel – Conventional Frame, 42" h x 36" w Acoustic Fabric and Accessory Elements	797	1591
2	KPWT4236	Segmented Panel – Conventional Frame, 42" h x 36" w Acoustic Fabric, Accessory and Power/Comm. Elements	905	1810
1	KPWT5148	Standard Panel – Conventional Frame, 51" h x 48" w Acoustic Fabric Elements, Top trim	788	779
2	KTE42	Panel End Trim, 42" h	36	72
2	KTI09	Intermediate Panel End Trim, 9" h	26	53
2	KTRC72	Continuous Top Trim, 72" w	89	176
4	KWRGQ3072	Guest Rectangle Worksurface (D-Style), 30" d x 72" w	573	2291
4	KWSQ2442	Rectangular Worksurface (D-Style), 24" d x 42" w	295	1185
8	KLP1	Slim Post Leg, Fixed	173	1383
4	UNRC60	Worksurface Reinforcement Channel, 60" w	92	366
2	KBC	Corner Bracket	33	65
4	KCM	Intermediate C-Leg (2 Left, 2 Right)	276	1102
4	CT22	Cantilever, 22" d (2 Left, 2 Right)	62	249
4	KWMPN1760	Modesty Panel, 60" w	273	1094
4	DP150	Pencil Drawer	59	235
4	LSLF4024	Front Opening Storage Locker, Four-High, 24" d, File, File (2 Left, 2 Right)	2582	10325
1	EKBF8T72	Base Feed, 8-Wire Isolated Ground, 72" long	283	283
1	EBFQC	Communications Base Feed	36	36
1	EKBH8T48	Power Harness, 8-Wire, Isolated Ground, 48" long	167	167
1	EKBH8T96	Power Harness, 8-Wire, Isolated Ground, 96" long	204	204
2	EKQPD	Double Power Box, Double-Sided	183	364
8	EKROS3AYY	Receptacle Outlet	32	253
			Total:	\$ 24091



Double Workstation (Manager 8' X 10')			Unit	Total
2	KPOGS3096	Panel Add-On – Single Glass, 30" h x 96" w	1301	2602
1	KPWS6642	Conventional Panel – Semi-Segmented, 66" h x 42" w Accessory and Power/Comm. Elements	1321	1321
1	KPWT6630	Conventional Panel – Standard, 66" h x 30" w Acoustic Elements	679	679
1	KPWT6648	Conventional Panel – Standard, 66" h x 48" w Acoustic Elements	914	914
4	KPXT3648	Floor Flush Panel – Standard, 36" h x 48" w Acoustic Elements	539	2156
2	KPXT6636	Floor Flush Panel – Standard, 66" h x 36" w Acoustic and Glazed Elements	1011	2023
2	KPXT6648	Floor Flush Panel – Standard, 66" h x 48" w Whiteboard and Acoustic Elements	1224	2448
2	KPXT6648	Floor Flush Panel – Standard, 66" h x 48" w Acoustic Elements	908	1817
2	KPXT6648	Floor Flush Panel – Standard, 66" h x 48" w Acoustic and Glazed Elements	1209	2419
4	KTE66	Panel End Trim, 66" h	37	150
1	KTRC78	Continuous Top Trim, 78" w	87	87
4	KTRC96	Continuous Top Trim, 96" w	98	394
4	KCCN6690	Two-Way Connector 90°, 66" h	195	782
2	KCC663	Three-Way Connector, 66" h	129	257
2	KPF6636R	Privacy Screen – Flat, 66" h x 36" w	1259	2518
2	KWBT3060	Bullet Worksurface, 30" d x 60" w	2206	4412
2	KWS2442	Rectangular Worksurface, 24" d x 42" w	797	1591
2	LPFNBBF2215D1A	Pedestal, Box, Box, File, 22" d x 15" w, Metal Front, Full Pull	766	1530
2	LMSF1514422	Sliding Door Storage Cabinet, 15" h x 14" d x 42" w, 2 Sides Inner Cover	715	1431
2	KMA42	Accessory Rail, 42" w	75	152
2	CT22	Cantilever, 22" d (1 Left, 1 Right)	56	111
2	CL29	C-Leg (1 Left, 1 Right)	168	337
2	CZ29	Monoleg	120	239
1	EKBF8T72	Base Feed, 8-Wire Isolated Ground, 72" long	283	283
1	EBFQC	Communications Base Feed	36	36
1	EKBH8T48	Power Harness, 8-Wire, Isolated Ground, 48" long	167	167
1	EKQPD	Power Box, Double Length	183	183
4	EKROS	Receptacle Outlet, Standard 15 Amp	32	127
2	TU220	Universal Light, Standard Plug	299	596
			Total:	\$ 31760





freestanding systems



MARKETPLACE 10

marketplace



Marketplace reinvents the worktable, achieving an uninterrupted span up to 20 feet that fosters creativity and collaboration in team-based office environments. Designed by Carl Gustav Magnusson, Marketplace is a visually sophisticated response for open workspaces, designed to accommodate multiple project teams.

By Nature, collaborative work requires less space and more opportunity to connect. Marketplace is scaled to respect space limitations while encouraging interaction and cleverly incorporating human aspects of work – such as personalization of space, storage and well-designed privacy options.

The benching examples below have been priced with the following finishes:

End Gable Finish: EXT: Mica, INT: Foundation Laminate
 Worksurface Finish: Foundation Laminate
 Edge Trim Style: Flat Trim
 Fabric: Grade 1
 Glazing Finish: Standard

Benching with Tackable Screens			Unit	Total
1	UMCE60	2 End Gables, Dual-Sided, 60" w	4554	4554
1	UMCT20S	Truss, 20' 1 (2 x 117" Modules), with Intermediate Support	5441	5441
3	UMCVD	Traverse, Dual-Sided	443	1328
1	UMQBFT8T72	Base Feed, Standard, Truss Mount, 8-Wire Isolated Ground, 72" l	456	440
8	UMQTL8T15	Table-Mounted Power/Communication Box, Standard-Capacity, 8-Wire Isolated Ground, Circuit 1 & 5 Outlet Configuration	488	3906
4	UMSCT60	Center Screen – Casual, Tackable, 60" l	469	1881
2	UMWE2760NNNL	Worksurface – End, 27" d x 60" w, No Grommet, No Cut out, Left Handed	962	1923
2	UMWE2760NNNR	Worksurface – End, 27" d x 60" w, No Grommet, No Cut out, Left Handed	962	1923
4	UMWI2760NNN	Worksurface – In-Line, 27" d x 60" w, No Grommet, No Cut out	962	3848
			Total:	\$ 25245



Benching with Glass Screens			Unit	Total
1	UMCE60	2 End Gables, Dual-Sided, 60" w	4554	4554
1	UMCT20S	Truss, 20' 1 (2 x 117" Modules), with Intermediate Support	5441	5441
3	UMCVD	Traverse, Dual-Sided	443	1328
1	UMQBFT8T72	Base Feed, Standard, Truss Mount, 8-Wire Isolated Ground, 72" 1	456	456
8	UMQTL8T15	Table-Mounted Power/Communication Box, Standard-Capacity, 8-Wire Isolated Ground, Circuit 1 & 5 Outlet Configuration	488	3906
4	UMSCG60	Center Screen – Casual, Glazed, 60" 1	570	2276
2	UMWE2760NNNL	Worksurface – End, 27" d x 60" w, No Grommet, No Cut out, Left Handed	962	1923
2	UMWE2760NNNR	Worksurface – End, 27" d x 60" w, No Grommet, No Cut out, Right Handed	962	1923
4	UMWI2760NNN	Worksurface – In-Line, 27" d x 60" w, No Grommet, No Cut out	962	3848
			Total:	\$ 25657



Benching with Glass Screens and Fabric Dividers			Unit	Total
1	UMCE60	2 End Gables, Dual-Sided, 60" w	4744	4744
1	UMCT20S	Truss, 20' 1 (2 x 117" Modules), with Intermediate Support	5441	5441
3	UMCVD	Traverse, Dual-Sided	443	1328
1	UMQBFT8T72	Base Feed, Standard, Truss Mount, 8-Wire Isolated Ground, 72" 1	456	456
8	UMQTL8T15	Table-Mounted Power/Communication Box, Standard-Capacity, 8-Wire Isolated Ground, Circuit 1 & 5 Outlet Configuration	488	3906
4	UMSCG60	Center Screen – Casual, Glazed, 60" 1	570	2276
6	UMSLT27	Lateral Screen – Tackable, 27" d	411	2467
2	UMWE2760NNNL	Worksurface – End, 27" d x 60" w, No Grommet, No Cut out, Left Handed	962	1923
2	UMWE2760NNNR	Worksurface – End, 27" d x 60" w, No Grommet, No Cut out, Right Handed	962	1923
4	UMWI2760NNN	Worksurface – In-Line, 27" d x 60" w, No Grommet, No Cut out	962	3848
			Total:	\$ 28313





Seating

CORPORATE AMERICA TYPICALLY SPENDS MORE TIME SEATED WHILE AT THE OFFICE THAN IN ANY OTHER POSITION. THAT IS WHY COMFORTABLE, ADJUSTABLE OFFICE SEATING IS IMPERATIVE. IDEALLY, PROPER SEATING MUST ACCOMMODATE THE DIFFERENT SIZES, SHAPES AND DISTINCT PERSONAL PREFERENCES AND JOB TYPES OF EACH USER. TEKNION XPRESS OFFERS A COMPREHENSIVE RANGE OF SEATING TO ADDRESS ALL THESE FACTORS – AND MORE.



WORK CHAIRS..... 14



MULTI-USE CHAIRS..... 18



STACKING CHAIRS 19



SOFT SEATING 20

seating



Teknion Work Chairs are available in a variety of styles and price points. The products are distinguished based on aesthetic design and feature sets.

Partially Upholstered chairs have the same upholstery applied to the seat and inside back. Exposed outside plastic back will be finished to match the frame.

Fully Upholstered chairs have the same upholstery applied to both the seat and full back.

Dual Upholstered chairs have different upholstery applied to the seat and back. Upholstery specified first will be applied to the back.

For detailed information please refer to the online Seating Price & User Guide.

Additional options may be available and additional pricing may apply. Please refer to specification software for details.

work chairs

Mid-Back – Single Upholstered		Gr. 1	Gr. 2	Leather LA
NACXF1NS	No Arms	919	964	1266
NACXF1TS	Fixed T-Arms	1022	1066	1367
NACXF1WS	2D Width- & Height-Adjustable T-Arms	1043	1091	1392
NACXF1PS	3D Width- & Height-Adjustable T-Arms	1096	1139	1442

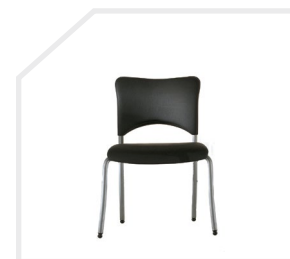
Mid-Back – Dual Upholstered		Gr. 1	Gr. 2	Leather LA
NACXF1ND	No Arms	1113	1157	1459
NACXF1TD	Fixed T-Arms	1215	1259	1560
NACXF1WD	2D Width- & Height-Adjustable T-Arms	1238	1284	1585
NACXF1PD	3D Width- & Height-Adjustable T-Arms	1289	1332	1635



Amicus® Task
Synchro-Tilt

Low-Back – Plastic Back		Gr. 1	Gr. 2	Leather LA
NAMGDFNZ	No Arms	357	387	563
NAMGDFKZ	Integrated Arms	400	429	607

Low-Back – Upholstered Pad on Plastic Back		Gr. 1	Gr. 2	Leather LA
NAMGDFNU	No Arms	409	440	617
NAMGDFKU	Integrated Arms	452	481	659



Amicus® Guest
Four Legs

work chairs

Dual Upholstered – No Lumbar		Gr. 1	Gr. 2	Leather LA
NSBYNN	No Arms	993	1014	1271
NSBYNNH	With Height-Adjustable T-Arms	1173	1195	1452

Dual Upholstered – With Lumbar		Gr. 1	Gr. 2	Leather LA
NSBYNYH	No Arms	1055	1073	1330
NSBYNYH	With Height-Adjustable T-Arms	1231	1253	1511



Sabrina
Synchro-Tilt

High-Back – Dual Upholstered		Gr. 1	Gr. 2	Leather LA
NPR TNN_F	No Arms	785	806	963
NPR TNF_F	Fixed Arms	871	893	1050
NPR TNW_F	2D Height- & Width-Adjustable T-Arms	899	919	1077
NPR TNP_F	3D Width-Height- & Depth-Adjustable Pivot Arms	954	974	1131



Projek Task
Synchro-Tilt

Mid-Back – Single Upholstered		Gr. 1	Gr. 2	Leather LA
NSAYF1NP	No Arms	688	717	904
NSAYF1FP	Fixed T-Arms	789	820	1005
NSAYF1WP	2D Width- & Height-Adjustable T-Arms	820	849	1037
NSAYF1QP	4D Width- & Height-Adjustable T-Arms	853	883	1070



Savera® Task
Synchro-Tilt

High-Back – Single Upholstered		Gr. 1	Gr. 2	Leather LA
NSAYH1NP	No Arms	714	745	972
NSAYH1FP	Fixed T-Arms	816	845	1073
NSAYH1WP	2D Width- & Height-Adjustable T-Arms	845	877	1105
NSAYH1QP	4D Width- & Height-Adjustable T-Arms	879	909	1137

seating

work chairs

Mid-Back – Single Upholstered		Gr. 1	Gr. 2	Leather LA
NSAWF1NP	No Arms	621	653	839
NSAWF1FP	Fixed T-Arms	723	754	940
NSAWF1WP	2D Width- & Height-Adjustable T-Arms	754	784	971
NSAWF1WP	4D Width- & Height-Adjustable T-Arms	787	817	1003

High-Back – Single Upholstered		Gr. 1	Gr. 2	Leather LA
NSAWH1NP	No Arms	649	679	906
NSAWH1FP	Fixed T-Arms	750	781	1008
NSAWH1WP	2D Width- & Height-Adjustable T-Arms	781	810	1038
NSAWH1QP	4D Width- & Height-Adjustable T-Arms	813	843	1071



Savera® General Use
Swivel-Tilt

Mid-Back – Mesh Back (Black)		Gr. 1	Gr. 2	Leather LA
NXXYF1NM	No Arms	567	581	732
NXXYF1FM	Fixed T-Arms	668	683	835
NXXYF1WM	Width- & Height-Adjustable T-Arms	692	707	860

Mid-Back – Fully Upholstered Back		Gr. 1	Gr. 2	Leather LA
NXXYF1NF	No Arms	608	637	959
NXXYF1FF	Fixed T-Arms	710	740	1060
NXXYF1WF	Width- & Height-Adjustable T-Arms	740	770	1091



t-3™ Task
Synchro-Tilt

work chairs

No Headrest		Ebony	Tess Silver	Very White w/ Polished Aluminum	Ebony w/ Polished Aluminum
NCSANPY	4D Arms, With Lumbar	1670	1670	1858	1858



Nuova Contessa Task
Synchro-Tilt, All Mesh

No Headrest		Gr. 1	Gr. 2	Leather LA
NCSMNPY	4D Arms, With Lumbar	1670	1688	1895



Nuova Contessa Task
Synchro-Tilt, Upholstered Seat,
Mesh Back

seating



Taiga™ shown above

Teknion Multi-Use Chairs are either stand alone products or part of a family of seating products that includes Work Chairs.

Fully Upholstered chairs have the same upholstery applied to both the seat and full back.

For detailed information please refer to the online Seating Price & User Guide.

Additional options may be available and additional pricing may apply. Please refer to specification software for details.

multi-use chairs

		Gr. 1	Gr. 2	Leather LA
NACSPR	Round Seat	290	312	475
NACSPT	Triangular Seat	281	302	459



Ability® Spinner Stool

Beech Wood Species, Single Stain		Gr. 1	Gr. 2	Leather LA
NSYNFBIS	Integrated Arms	1043	1067	1155

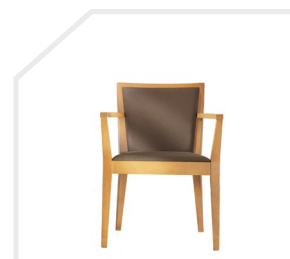


Synapse™ Wood Guest
Fully Assembled

Upper Back Upholstered		Gr. 1	Gr. 2	Leather LA
NTAGKM		1133	1163	1485

Fully Upholstered		Gr. 1	Gr. 2	Leather LA
NTAGKF		1222	1258	1744

Vertical Wood Slat Back Upholstered		Gr. 1	Gr. 2	Leather LA
NTAGKV		1234	1263	1567



Taiga™ Wood Guest



Volume™ shown above

Teknion Stacking Chairs are available in a variety of styles and price points.

For detailed information please refer to the online Seating Price & User Guide.

Additional options may be available and additional pricing may apply. Please refer to specification software for details.

stacking chairs

Not Upholstered		Price
NNACCN	No Arms	344
NNACCK	Integrated Arms	463



Nami®
Cantilever Frame

Not Upholstered		Price
NHDSNN	No Arms	205



Volume™

Not Upholstered		Price
NZOCAFNN	No Arms	226
NZOCAFFN	Cantilever Arms	277



Zone™
Four-Legs, Small

seating



Teknion Soft Seating are either stand alone products or part of a family of seating products that includes assorted sizes and types.

For detailed information please refer to the online Seating Price & User Guide.

Additional options may be available and additional pricing may apply. Please refer to specification software for details.

Round Collaborative Ottoman - Small Diameter, Teknion dna® shown above

soft seating

Round – Single Upholstered		Gr. 1	Gr. 2	Leather LA
NCORS DS	Small Diameter, Teknion dna Height	591	615	833
NCORS LS	Small Diameter, Lounge Height	615	638	859
NCORM DS	Medium Diameter, Teknion dna Height	761	784	1002
NCORM LS	Medium Diameter, Lounge Height	784	808	1028

Round – Dual Upholstered		Gr. 1	Gr. 2	Leather LA
NCORS DD	Small Diameter, Teknion dna Height	713	737	956
NCORS LD	Small Diameter, Lounge Height	737	761	980
NCORM DD	Medium Diameter, Teknion dna Height	883	906	1125
NCORM LD	Medium Diameter, Lounge Height	906	931	1150



Collaborative Ottoman

Square – Single Upholstered		Gr. 1	Gr. 2	Leather LA
NCORS DS	Small Diameter, Teknion dna Height	638	664	880
NCORS LS	Small Diameter, Lounge Height	664	688	905
NCORM LS	Medium Diameter, Lounge Height	833	859	1074

Square – Dual Upholstered		Gr. 1	Gr. 2	Leather LA
NCORS DD	Small Diameter, Teknion dna Height	761	786	1002
NCORS LD	Small Diameter, Lounge Height	786	810	1028
NCORM LD	Medium Diameter, Lounge Height	956	980	1196

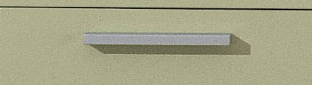
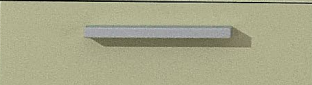


Teknion seating
installation guide

Teknion seating
price and
product index

Teknion seating
installation guide

Teknion seating
price and
product index



filing & storage

FILING AND STORAGE SYSTEMS ARE THE KEY TO AN ORGANIZED OFFICE. TEKNION SYSTEMS ARE DESIGNED TO HOUSE COMMONLY REFERENCED MATERIALS CONVENIENTLY WITHIN THE WORKSETTING – EVERYTHING FROM TRADITIONAL PAPER DOCUMENTS TO ADVANCED ELECTRONIC ARCHIVAL MEDIUMS OF TODAY. GET ORGANIZED FASTER WITH TEKNION XPRESS.



LEDGER 24



STANDARD STORAGE 32

Ledger



Ledger is a versatile, standalone storage and filing system that addresses a full range of storage needs in one complete, unified product line. It includes lateral files, storage cabinets, combination storage cabinets, and mobile and freestanding pedestals. Ledger complements any office furnished with Teknion or other products.

The workstation examples below have been priced with the following finishes:

Front Finish Style: Metal

Additional options may be available and additional pricing may apply. Please refer to specification software for details.

lateral files

Letter Height		Gr. 1	Gr. 2
LLF20L1830	18" d, 30" w, 25.6" h	976	1136
LLF20L1836	18" d, 36" w, 25.6" h	1043	1213
LLF20L1842	18" d, 42" w, 25.6" h	1116	1292
LLF20L2030	20" d, 30" w, 25.6" h	976	1136
LLF20L2036	20" d, 36" w, 25.6" h	1043	1213
LLF20L2042	20" d, 42" w, 25.6" h	1116	1292

Combo Height (Shown)		Gr. 1	Gr. 2
LLF20C1830	18" d, 30" w, 27.2" h	996	1154
LLF20C1836	18" d, 36" w, 27.2" h	1063	1234
LLF20C1842	18" d, 42" w, 27.2" h	1133	1316
LLF20C2030	20" d, 30" w, 27.2" h	996	1154
LLF20C2036	20" d, 36" w, 27.2" h	1063	1234
LLF20C2042	20" d, 42" w, 27.2" h	1133	1316



Two-High

Letter Height		Gr. 1	Gr. 2
LLF30L1830	18" d, 30" w, 36.8" h	1325	1537
LLF30L1836	18" d, 36" w, 36.8" h	1420	1648
LLF30L1842	18" d, 42" w, 36.8" h	1517	1757
LLF30L2030	20" d, 30" w, 36.8" h	1325	1537
LLF30L2036	20" d, 36" w, 36.8" h	1420	1648
LLF30L2042	20" d, 42" w, 36.8" h	1517	1757

Combo Height (Shown)		Gr. 1	Gr. 2
LLF30C1830	18" d, 30" w, 40" h	1361	1581
LLF30C1836	18" d, 36" w, 40" h	1455	1691
LLF30C1842	18" d, 42" w, 40" h	1551	1803
LLF30C2030	20" d, 30" w, 40" h	1361	1581
LLF30C2036	20" d, 36" w, 40" h	1455	1691
LLF30C2042	20" d, 42" w, 40" h	1551	1803



Three-High

lateral files

Letter Height		Gr. 1	Gr. 2
LLF40L1830	18" d, 30" w, 48" h	1639	1902
LLF40L1836	18" d, 36" w, 48" h	1757	2039
LLF40L1842	18" d, 42" w, 48" h	1876	2176
LLF40L2030	20" d, 30" w, 48" h	1639	1902
LLF40L2036	20" d, 36" w, 48" h	1757	2039
LLF40L2042	20" d, 42" w, 48" h	1876	2176

Combo Height (Shown)		Gr. 1	Gr. 2
LLF40C1830	18" d, 30" w, 51.2" h	1754	2035
LLF40C1836	18" d, 36" w, 51.2" h	1871	2173
LLF40C1842	18" d, 42" w, 51.2" h	1995	2310
LLF40C2030	20" d, 30" w, 51.2" h	1754	2035
LLF40C2036	20" d, 36" w, 51.2" h	1871	2173
LLF40C2042	20" d, 42" w, 51.2" h	1995	2310



Four-High

Letter Height		Gr. 1	Gr. 2
LLF50L1830	18" d, 30" w, 62.4" h	2170	2514
LLF50L1836	18" d, 36" w, 62.4" h	2307	2678
LLF50L1842	18" d, 42" w, 62.4" h	2452	2841
LLF50L2030	20" d, 30" w, 62.4" h	2170	2514
LLF50L2036	20" d, 36" w, 62.4" h	2307	2678
LLF50L2042	20" d, 42" w, 62.4" h	2452	2841

Combo Height (Shown)		Gr. 1	Gr. 2
LLF50C1830	18" d, 30" w, 65.6" h	2172	2518
LLF50C1836	18" d, 36" w, 65.6" h	2312	2683
LLF50C1842	18" d, 42" w, 65.6" h	2455	2847
LLF50C2030	20" d, 30" w, 65.6" h	2172	2518
LLF50C2036	20" d, 36" w, 65.6" h	2312	2683
LLF50C2042	20" d, 42" w, 65.6" h	2455	2847

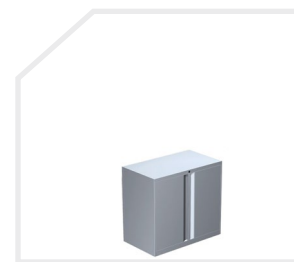


Five-High

storage cabinets

Letter Height		Gr. 1	Gr. 2
LSC21L1830	18" d, 30" w, 25.6" h	763	890
LSC21L1836	18" d, 36" w, 25.6" h	820	948
LSC21L1842	18" d, 42" w, 25.6" h	871	1010
LSC21L2030	20" d, 30" w, 25.6" h	763	890
LSC21L2036	20" d, 36" w, 25.6" h	820	948
LSC21L2042	20" d, 42" w, 25.6" h	871	1010

Combo Height (Shown)		Gr. 1	Gr. 2
LSC21C1830	18" d, 30" w, 27.2" h	781	907
LSC21C1836	18" d, 36" w, 27.2" h	837	971
LSC21C1842	18" d, 42" w, 27.2" h	890	1032
LSC21C2030	20" d, 30" w, 27.2" h	781	907
LSC21C2036	20" d, 36" w, 27.2" h	837	971
LSC21C2042	20" d, 42" w, 27.2" h	890	1032



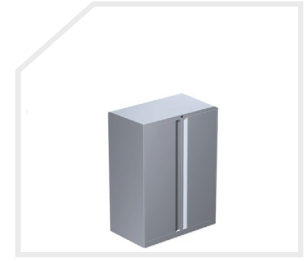
Two-High, One Shelf

Ledger

storage cabinets

Letter Height		Gr. 1	Gr. 2
LSC31L1830	18" d, 30" w, 36.8" h	1041	1214
LSC31L1836	18" d, 36" w, 36.8" h	1117	1293
LSC31L1842	18" d, 42" w, 36.8" h	1177	1370
LSC31L2030	20" d, 30" w, 36.8" h	1041	1214
LSC31L2036	20" d, 36" w, 36.8" h	1117	1293
LSC31L2042	20" d, 42" w, 36.8" h	1177	1370

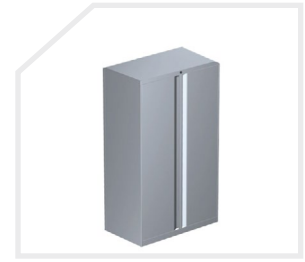
Combo Height		Gr. 1	Gr. 2
LSC31C1830	18" d, 30" w, 40" h	1080	1258
LSC31C1836	18" d, 36" w, 40" h	1154	1339
LSC31C1842	18" d, 42" w, 40" h	1215	1411
LSC31C2030	20" d, 30" w, 40" h	1080	1258
LSC31C2036	20" d, 36" w, 40" h	1154	1339
LSC31C2042	20" d, 42" w, 40" h	1215	1411



Three-High, Two Shelves

Letter Height		Gr. 1	Gr. 2
LSC41L1830	18" d, 30" w, 48" h	1242	1443
LSC41L1836	18" d, 36" w, 48" h	1327	1537
LSC41L1842	18" d, 42" w, 48" h	1396	1619
LSC41L2030	20" d, 30" w, 48" h	1242	1443
LSC41L2036	20" d, 36" w, 48" h	1327	1537
LSC41L2042	20" d, 42" w, 48" h	1396	1619

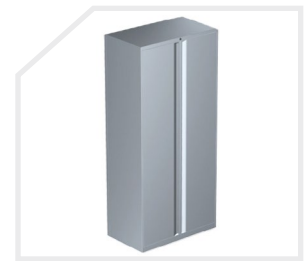
Combo Height		Gr. 1	Gr. 2
LSC41C1830	18" d, 30" w, 51.2" h	1280	1486
LSC41C1836	18" d, 36" w, 51.2" h	1364	1582
LSC41C1842	18" d, 42" w, 51.2" h	1432	1658
LSC41C2030	20" d, 30" w, 51.2" h	1280	1486
LSC41C2036	20" d, 36" w, 51.2" h	1364	1582
LSC41C2042	20" d, 42" w, 51.2" h	1432	1658



Four-High, Three Shelves

Letter Height		Gr. 1	Gr. 2
LSC51L1830	18" d, 30" w, 62.4" h	1476	1716
LSC51L1836	18" d, 36" w, 62.4" h	1572	1823
LSC51L1842	18" d, 42" w, 62.4" h	1649	1908
LSC51L2030	20" d, 30" w, 62.4" h	1476	1716
LSC51L2036	20" d, 36" w, 62.4" h	1572	1823
LSC51L2042	20" d, 42" w, 62.4" h	1649	1908

Combo Height		Gr. 1	Gr. 2
LSC51C1830	18" d, 30" w, 65.6" h	1516	1764
LSC51C1836	18" d, 36" w, 65.6" h	1612	1866
LSC51C1842	18" d, 42" w, 65.6" h	1683	1952
LSC51C2030	20" d, 30" w, 65.6" h	1516	1764
LSC51C2036	20" d, 36" w, 65.6" h	1612	1866
LSC51C2042	20" d, 42" w, 65.6" h	1683	1952



Five-High, Four Shelves

over head storage

Grade 1 Case		No Inner Cover (0) Metal Front		Inner Cover One Side (1) Metal Front		Inner Cover Two Sides (2) Metal Front	
		Gr. 1	Gr. 2	Gr. 1	Gr. 2	Gr. 1	Gr. 2
LMSU151430	15" h, 14" d, 30" w	596	606	644	651	689	697
LMSU141436	15" h, 14" d, 36" w	658	668	705	714	750	761
LMSU151442	15" h, 14" d, 42" w	715	727	761	771	807	819
LMSU151448	15" h, 14" d, 48" w	770	782	816	829	862	872

Grade 2 Case		No Inner Cover (0) Metal Front		Inner Cover One Side (1) Metal Front		Inner Cover Two Sides (2) Metal Front	
		Gr. 1	Gr. 2	Gr. 1	Gr. 2	Gr. 1	Gr. 2
LMSU151430	15" h, 14" d, 30" w	668	677	721	729	772	781
LMSU151436	15" h, 14" d, 36" w	724	734	775	786	826	836
LMSU151442	15" h, 14" d, 42" w	801	810	852	864	904	914
LMSU151448	15" h, 14" d, 48" w	863	874	913	927	965	976

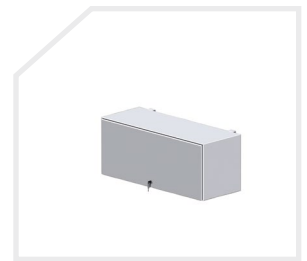
Can be mounted to Leverage, T/O/S and Transit.



Upmount Sliding Door Storage Cabinet

		Gr. 1	Gr. 2
LSF1330	15" h, 13" d, 30" w	737	855
LSF1336	15" h, 13" d, 36" w	813	935
LSF1342	15" h, 13" d, 42" w	893	1010
LSF1348	15" h, 13" d, 48" w	968	1088
LSF1354	15" h, 13" d, 54" w	1043	1166
LSF1360	15" h, 13" d, 60" w	1126	1245

Can be mounted to Leverage, T/O/S and Transit.



Flush Front

Ledger

combination storage cabinet

Letter Height		Gr. 1	Gr. 2
LCC51L1830	18" d, 30" w, 62.4" h	1925	2229
LCC51L1836	18" d, 36" w, 62.4" h	2048	2378
LCC51L1842	18" d, 42" w, 62.4" h	2175	2519
LCC51L2030	20" d, 30" w, 62.4" h	1925	2229
LCC51L2036	20" d, 36" w, 62.4" h	2048	2378
LCC51L2042	20" d, 42" w, 62.4" h	2175	2519

Combo Height		Gr. 1	Gr. 2
LCC51C1830	18" d, 30" w, 65.6" h	1960	2275
LCC51C1836	18" d, 36" w, 65.6" h	2085	2419
LCC51C1842	18" d, 42" w, 65.6" h	2211	2564
LCC51C2030	20" d, 30" w, 65.6" h	1960	2275
LCC51C2036	20" d, 36" w, 65.6" h	2085	2419
LCC51C2042	20" d, 42" w, 65.6" h	2211	2564



Five-High

storage lockers

Four-High – File, File		Gr. 1	Gr. 2
LSL4224S	24" d, 51.2" h, Half-Height Door	2685	2799

Five-High – File, File, File (Shown)		Gr. 1	Gr. 2
LSL5224S	24" d, 65.6" h, Half-Height Door	2843	2960
LSL5224F	24" d, 65.6" h, Full-Height Door	2843	2960



File, File (Shown)		Gr. 1	Gr. 2
LSLF40241212M	24" w, 24" d, 49.6" h, metal door with wardrobe (Shown)	2539	2672
LSLF40241212O	24" w, 24" d, 49.6" h, open shelf with wardrobe	2441	2572

Box, Box, File		Gr. 1	Gr. 2
LSLF40246612M	24" w, 24" d, 49.6" h, metal door with wardrobe	2606	2738
LSLF40246612O	24" w, 24" d, 49.6" h, open shelf with wardrobe	2507	2640



Four-High

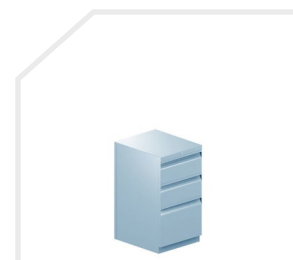
pedestals

Box, File		Gr. 1	Gr. 2
LPFNBF1815	18" d, 15" w, 20.8" h	654	747
LPFNBF2305	22" d, 15" w, 20.8" h	683	781
LPFNBF2815	28" d, 15" w, 20.8" h	714	820

Box, Box, File (Shown)		Gr. 1	Gr. 2
LPFNBBF1815	18" d, 15" w, 27.2" h	757	869
LPFNBBF2215	22" d, 15" w, 27.2" h	792	905
LPFNBBF2815	28" d, 15" w, 27.2" h	826	944

Large File, File		Gr. 1	Gr. 2
LPFNLF1815	18" d, 15" w, 27.2" h	689	802
LPFNLF2215	22" d, 15" w, 27.2" h	716	830
LPFNLF2815	28" d, 15" w, 27.2" h	745	865

File, File		Gr. 1	Gr. 2
LPFNFF1815	18" d, 15" w, 25.6" h	672	780
LPFNFF2215	22" d, 15" w, 25.6" h	699	810
LPFNFF2815	28" d, 15" w, 25.6" h	727	844



Pedestal

Box, File		Gr. 1	Gr. 2
LPWNBF1815	18" d, 15" w, 23.8" h	906	1002
LPWNBF2215	22" d, 15" w, 23.8" h	936	1038
LPWNBF2815	28" d, 15" w, 23.8" h	964	1070

Box, Box, File		Gr. 1	Gr. 2
LPWNBBF1815	18" d, 15" w, 30.2" h	1025	1143
LPWNBBF2215	22" d, 15" w, 30.2" h	1062	1184
LPWNBBF2815	28" d, 15" w, 30.2" h	1080	1223

Large File, File (Shown)		Gr. 1	Gr. 2
LPWNLF1815	18" d, 15" w, 30.2" h	955	1071
LPWNLF2215	22" d, 15" w, 30.2" h	980	1105
LPWNLF2815	28" d, 15" w, 30.2" h	1009	1136



Mobile Pedestal

Small Box, File (Shown)		Gr. 1	Gr. 2	Gr. 10
LPKNSF2215	22" d, 15" w, 24.4" h (Gr.1 case)	1265	1302	1869
LPKNSF2215	22" d, 15" w, 24.4" h (Gr.2 case)	1362	1399	1968

Box, File		Gr. 1	Gr. 2	Gr. 10
LPKNBF2215	22" d, 15" w, 26" h (Gr.1 case)	1278	1313	1882
LPKNBF2215	22" d, 15" w, 26" h (Gr.2 case)	1379	1415	1983



Mobile Pedestal with Seat

pedestals

Box, File		Gr. 1	Gr. 2
LPSBF1830	18" d, 30" w, 20.8" h	926	1075
LPSBF1836	18" d, 36" w, 20.8" h	997	1158
LPSBF1842	18" d, 42" w, 20.8" h	1067	1239

Box, Box, File (Shown)		Gr. 1	Gr. 2
LPSBBF1830	18" d, 30" w, 27.2" h	1192	1387
LPSBBF1836	18" d, 36" w, 27.2" h	1285	1495
LPSBBF1842	18" d, 42" w, 27.2" h	1383	1604

Large File, File		Gr. 1	Gr. 2
LPSLF1830	18" d, 30" w, 27.2" h	996	1154
LPSLF1836	18" d, 36" w, 27.2" h	1063	1234
LPSLF1842	18" d, 42" w, 27.2" h	1133	1316

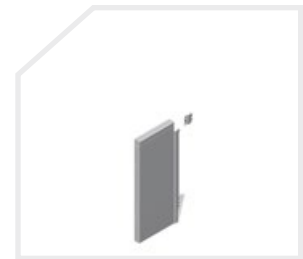
File, File		Gr. 1	Gr. 2
LPSFF1830	18" d, 30" w, 25.6" h	976	1136
LPSFF1836	18" d, 36" w, 25.6" h	1043	1213
LPSFF1842	18" d, 42" w, 25.6" h	1116	1292



Stretch Pedestal

pedestal accessories

		Gr. 1	Gr. 2
LSBN1824	18" storage depth, 24" worksurface depth	143	164
LSBN1830	18" storage depth, 30" worksurface depth	143	164
LSBN2024	20" storage depth, 24" worksurface depth	143	164
LSBN2030	20" storage depth, 30" worksurface depth	143	164
LSBN2224	22" storage depth, 24" worksurface depth	143	164
LSBN2230	22" storage depth, 30" worksurface depth	143	164
LSBN2830	28" storage depth, 30" worksurface depth	143	164



Pedestal Supporting Bracket

lateral file accessories

Hanging File Bars		Price
LFA01	30" w	36
LFA02	36" w	36
LFA03	42" w	36

Cross File Bars		Price
LFA0718	18" d,	34
LFA0720	20" d,	34

Counterweights		Price
LFA08	7" d, 12" w, 13" h	77
LFA09	7" d, 12" w, 13" h	77

Divider Plates		Price
LFA1018	13" d, 8" h	37
LFA1020	14" d, 8" h	37

Legal-to-Letter Adapter		Price
LFA11	30" w	22
LFA12	36" w	22
LFA13	42" w	22

EDP Adapters		Price
LFA2018	18" d	37
LFA2020	20" d	37

Half-Height Divider Plates		Price
LFA2418	4" h, 13" d	37
LFA2420	4" h, 14" d	37

Quarter-Height Module Divider Plates		Price
LFA3218	26" h, 13" d	37
LFA3220	26" h, 14" d	37



standard storage

Standard Storage is efficient and practical. This line offers Teknion quality at a value price.

The items below have been priced with the following finishes:

Front Finish Style: Metal

Additional options may be available and additional pricing may apply. Please refer to specification software for details.

pedestals

File, File (Shown)		Price
LCDM1212	22" d, 15" w, 27.2" h	542

Box, Box, File		Price
LCDM6612	22" d, 15" w, 27.2" h	576



Pedestal

File, File (Shown)		Price
LCE30	18" d, 30" w, 27.2" h	774
LCE36	18" d, 36" w, 27.2" h	874
LCE42	18" d, 42" w, 27.2" h	959



Stretch Pedestal



tables

TABLES PLAY AN INCREASINGLY INTEGRAL ROLE IN TODAY'S EVOLVING OFFICE ENVIRONMENT. TEKNION'S INTEGRATED TABLE DESIGNS ARE HIGHLY DURABLE FOR CONTINUOUS USE, SUPPORTING MULTIPLE APPLICATIONS IN MULTIPLE ENVIRONMENTS, INCLUDING TRAINING FACILITIES, CONFERENCE CENTERS, A/V ROOMS, PRESENTATION AREAS, CALL CENTERS AND CAFETERIAS.



THESIS 36



EXPANSION TRAINING..... 38



EXPANSION CASEGOODS MEETING 39



Thesis has been designed to address today's evolving learning trends. Similar to the changes seen over the past few years in office environments, educational institutions are also experiencing a shift in the way that students learn and interact. Thesis can be applied to create collaborative spaces for group work or conversational applications, or pulled apart for independent learning alternatives.

The workstation examples below have been priced with the following finishes:

Learning Tables

Worksurface 24 x 72: Foundation Laminate Very White
 Legs: Mica Very White

Leg detail and accessories (cup holder and grommet): Accent Gala

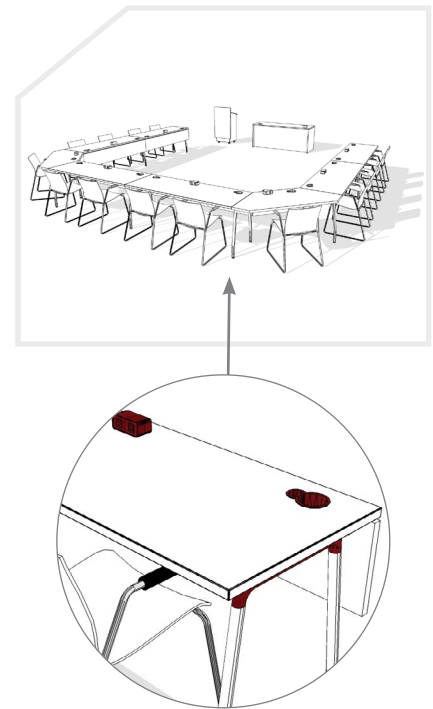
Study Tables

Library Tables: Foundation Laminate Walnut Rift

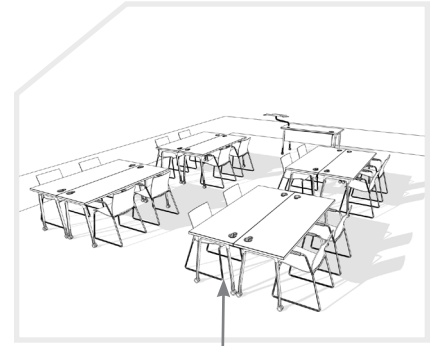
Carrel Dividers and Support End Screen: Source Laminate Walnut Rift

Square Post Legs: Clear Anodize

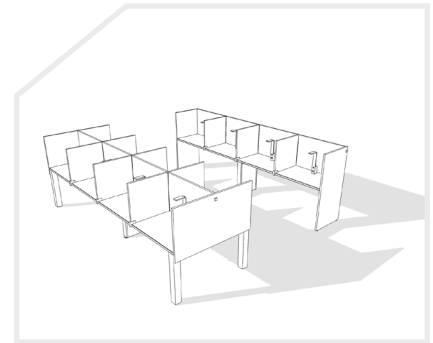
Benching with Tackable Screens			Unit	Total
2	THCCS2448W	Modesty Panel for Connecting Trapeze Worksurface - Solid, 24" d x 48" w, Without Built-In Cable Tray	148	296
9	THCLA2924P	Adaptable Leg, 29" h x 24" d, Levelers - PTFE Glides	361	3249
6	THCMSF72W	Modesty Panel - Solid, Flush Modesty, 72" w Worksurface, Without Built-In Cable Tray	283	1698
1	THPRMN2472GC	Rectangular Professor Desk, No Lectern, 24" d x 72" w, One Grommet/Cup Holder (1-3/16")	650	650
2	THWCM244890GC	Connecting Trapeze Worksurface, 24" d x 48" w, 90° Angle, One Grommet/Cup Holder (1-3/16")	591	1182
6	THWRM2472GC	Rectangular Worksurface, 24" d x 72" w, One Grommet/Cup Holder (1-3/16")	680	4080
9	THEWPD101Q120	Power/Data Cube, Power/Data, Square Grommet, 120" l	280	2520
1	THPLMW	Lectern Podium, Mobile, With Power & Data (1-3/16")	1591	1591
			Total:	\$ 15266



Classroom_TeamWork			Unit	Total
2	THCLA2924C	Adaptable Leg, 29" h x 24" d, Casters	361	722
16	THCLA2924C	Adaptable Leg, 29" h x 24" d, Casters	361	5776
1	THCMS60C	Modesty Panel - Solid, Casual Modesty, 60" w Worksurface, With Built-In Cable Tray	289	289
1	THPRMR2460GC	Rectangular Professor Worksurface, Right Lectern, 24" d x 60" w, One Grommet/Cup Holder (1-3/16")	1555	1555
8	THWRM2472NC	Rectangular Worksurface, 24" d x 72" w, Cup Holder(s) (1-3/16")	680	5440
			Total:	\$ 13782



Carrels			Unit	Total
12	THERLO	Led Reading Lamp, Standard	617	7404
2	THLBQD2948	Square Post Legs, Double-Sided, 29" h x 48" d	657	1314
1	THLDMW48083629GS	Library Table-Double-Sided, With Division, 8 Users, 48" d x 36" w x 29" h, Grommet(s) - One per User (1-3/16")	2840	2840
1	THLSMW24043629GS	Library Table-Single-Sided, With Division, 4 Users, 24" d x 36" w x 29" h, Grommet(s)-One per User(1-3/16")	1771	1771
1	THSCDSS51480836S	Carrel Dividers - Double-Sided, Solid, 8 Users, 51" h x 48" d x 36" w, Standard Corner	1978	1978
1	THSCSSS51240436S	Carrel Dividers - Single-Sided, Solid, 4 Users 51" h x 24" d x 36" w, Standard Corner	1529	1529
1	THSEEMSL5124SN	Carrel Supp. End Screen - Solid, Std, Left Handed, 51" h x 24" d, Std. Corner, No Grommet (1-3/16")	351	351
1	THSEEMSR5124SN	Carrel Supp. End Screen - Solid, Std, Right Handed, 51" h x 24" d, Std. Corner, No Grommet (1-3/16")	351	351
2	THSEMSD5148S	Carrel End Screen - Solid, Standard, Double-sided, 51" h x 48" w, Standard Corner (1-3/16")	426	852
			Total:	\$ 18390



expansion training

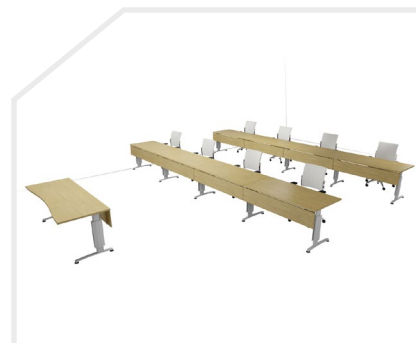


The Expansion Training Tables offering is designed to suit a variety of training scenarios in corporate and institutional environments. Expansion Training offered in Teknion Xpress have multiple applications to accommodate individual study, team seminars or large scale group presentations.

This training table examples below have been priced with the following finishes:

Surface Finish:	Foundation Laminate
Edge Trim Style:	Straight Edge Trim
Paint Finish:	Mica
Fabric:	Grade 1

Classroom			Unit	Total
1	CTCKA3078	Cockpit Worksurface, No Grommet/No Power Module, 30" d x 78" w	756	756
12	CTCLSB240	C-Leg, Slender, Fixed-Height, 24" d, Two Levelers	196	2352
8	CTLMS160	Modesty Panel, Laminate, Standard, without Cable Tray, 60" w	250	2000
1	CTLMS178	Modesty Panel, Laminate, Standard, without Cable Tray 78" w	290	290
8	CTRTA3060	Rectangular Worksurface, No Grommet/No Power Module, 30" d x 60" w	583	4664
12	CTVLN	Vertical Leg Cover, without Wire Management, 6" w x 18" h	115	1380
			Total:	\$ 11442



Collaborating			Unit	Total
1	BAWDT4844	Wall Mounted Display Board – Tackable, 48" w x 44" h	1996	1996
4	CTFTCS2472	Rectangular Flip-Top Table, C-Leg, Slender, 24" d x 72" w	1379	5516
			Total:	\$ 7512



Study Carrel			Unit	Total
7	CTCLSB240	C-Leg, Slender, Fixed-Height, 24" d, Two Levelers	189	1323
2	CTDSFS1542	Fabric Table Screen, Standard, 15" h x 42" w	383	766
6	CTLSF1524	Fabric Lateral Screen, 15" h x 24" d	300	1800
4	CTRTA2442	Rectangular Worksurface, No Grommet/No Power Module, 24" d x 42" w	325	1300
			Total:	\$ 5189



expansion casegoods meeting



As the work environment continues to evolve, meetings are increasingly being held any time, any place. The Expansion Casegoods Meeting Tables line was designed to embrace these varied meeting activities and forums. To support new presentation technologies, tables feature an integrate wire management system.

This meeting table examples below have been priced with the following finishes:

Surface Finish:	Foundation Laminate
Edge Trim Style:	Straight Edge Trim
Paint Finish:	Mica
Door Finish:	Source Laminate

Meeting - Convex Racetrack Conference Table			Unit	Total
1	BAWDT4844	Wall Mounted Display Board – Tackable, 48" w x 44" h	1996	1996
1	BCMCR481201	Convex Racetrack Conference Table – Rectangular Bases, 48" d x 120" w, with Flip-Up Power/Data Module, 1-3/16"	2638	2638
			Total:	\$ 4634



Meeting - Rectangular Conference Table			Unit	Total
1	BBASB0484	Light Shelf for Wall Panel, 04" d x 84" w – Wall Panel Mounted	213	213
1	BCMNRB481440	Rectangular Conference Table – Panel Bases, 48" d x 144" w, No Power/Data Module, 1-3/16"	2639	2639
1	BMWPOS7284NN	Wall Panel for Standard Overhead, with Rail, 72" h x 84" w, No Power & Data – Standard Desk, 1-3/16"	736	736
1	BMZAD2484	Credenza with Doors only, 24" d x 84" w, 1-3/16" h Worksurfaces	2610	2610
1	BOCLB168415	Overhead Cabinet – Laminate Hinged Doors, 16" d x 84" w x 15" h, Wall Panel Mounted	1117	1117
			Total:	\$ 7315



Meeting - Round Meeting Table			Unit	Total
1	BCMROF42	Round Meeting Table, Four-Point Base, 42" dia, 1-3/16"	863	863
			Total:	\$ 863





desking

TEKNION'S DESKING SOLUTIONS COMBINE THE
ADVANTAGES OF FREESTANDING AND SYSTEMS
FURNITURE. DESKING PRODUCTS WILL WORK EQUALLY
WELL IN THE CREATION OF SPACE-EFFICIENT AREAS
FOR BOTH OPEN SPACES AND ENCLOSED OFFICES.



EXPANSION DESKING 42

expansion desking



Expansion Desking is a comprehensive line that has the ability to reinvent the way of designing efficient configurations with the appropriate levels of intimacy. It's generous storage solutions and unique versatility contribute to a collaborative work environment with a feeling of spaciousness.

The workstation examples below have been priced with the following finishes:

Surface Finish:	Foundation Laminate
Edge Trim Style:	Straight Trim
Paint Finish:	Mica
Door & Drawer Finish:	Source Laminate
Fabric:	Grade 1

Open Plan – Small Clusters			Unit	Total
6	RBAT24426612L	Tower with Lateral Access & Drawers, 24" d x 42" h, Box, Box, File	904	5424
3	RDMLT72	Flush-Mounted Modesty Panel – Laminate, 3/4 Height, 72" w	209	627
6	RNDRRL24246372L	Semi-Supported L-Shaped Desk with Suspended Return – Laminate Full Gable, 24" dA x 24" dB x 63" wA	1371	8226
6	RPSWL1336	Worksurface Edge Screen – Laminate, 13" h x 36" w	198	1188
3	RSBHDRFS1672	Sit-On Cabinet – Hinged Doors, Right (Shared), Fabric Tackboard Accessory, Shelf Mounted, 16" d x 72" w	1200	3600
3	RSBMSDD071672	Desk-Mounted Shelf – Shared, Power & Data, 7" h x 16" d x 72" w	941	2823
			Total:	\$ 21888



Private Office			Unit	Total
1	RAMLF72	Inset Modesty Panel – Laminate, Flush, Camber Base, 1/2" Height, 72" w	129	129
1	RBCP183028R	Combo Pedestal, 18" d x 30" w x 28" h	1208	1208
1	RDBURLS3072L	D-Shaped Peninsula Desk – Laminate Half Gables, Recessed, Camber Base, 30" d x 72" w, Left	1350	1350
1	RDMLF30	Flush-Mounted Modesty Panel – Laminate, Full Height, 30" w	116	116
1	RDMLF72	Flush-Mounted Modesty Panel – Laminate, Full Height, 72" w	263	263
1	RDRRL2472	Rectangular Desk with Laminate Full Gables, 24" d x 72" w	1036	1036
1	ROARDC72	Accessory Rail	255	255
1	ROCCC1672	Overhead Cabinet, Laminate Hinged Doors – Column Mounted, 16" d x 72" w	1085	1085
2	RPSC37	Structural Column, 37" h	133	266
1	RPSF2270	Unframed Fabric Element, 22" h x 70" w	361	361
1	RTLDC2442C	Rectangular Worksurface with Cross Grain, 24" d x 42" w – Center Grommet	325	325
			Total:	\$ 6394



Open Plan – Collaborative			Unit	Total
2	RDMLT84	Flush-Mounted Modesty Panel – Laminate, 3/4" Height, 84" w	244	488
2	RNDRRL24248484L	Semi-Supported L-Shaped Desk with Suspended Return – Laminate Full Gable, 24" dA x 24" dB x 84" wA	1701	3402
2	RNDRRL24248484R	Semi-Supported L-Shaped Desk with Suspended Return – Laminate Full Gable, 24" dA x 24" dB x 84" wA	1702	3402
4	RPSLL5184	1" Laminate Floor Screen, 51" h x 84" w	631	2524
1	RSBHDFS1684	Sit-On Cabinet – Hinged Doors, Left (Shared), Fabric Tackboard Accessory, Shelf Mounted, 16" d x 84" w	1452	1452
1	RSBHDFS1684	Sit-On Cabinet – Hinged Doors, Right (Shared), Fabric Tackboard Accessory, Shelf Mounted, 16" d x 84" w	1452	1452
2	RSBMSDD071684	Desk-Mounted Shelf – Shared, Power & Data, 7" h x 16" d x 84" w	992	1984
2	RSCOLL2060	Freestanding Credenza – Open with Lateral Files, Low, Left (Single-Sided), 20" d x 60" w	1094	2188
2	RSCOLLR2060	Freestanding Credenza – Open with Lateral Files, Low, Right (Single-Sided), 20" d x 60" w	1094	2192
4	RSMD051816	Worksurface Drawer Support – Low Credenza, 18" d x 16" w	323	1291
			Total:	\$ 20372





casegoods

TEKNION CASEGOODS HAVE BEEN CLEVERLY DESIGNED TO FUNCTION AS THE STANDALONE UNITS THAT THEY HAVE BEEN TRADITIONALLY REGARDED AS, AND AS COMPONENTS THAT INTEGRATE WITH OTHER TEKNION OFFICE FURNITURE PRODUCTS. OUR TEKNION XPRESS CASEGOODS OFFERING ACCOMMODATES DIFFERENT TASTES AND BUDGETS WITH CUSTOMIZABLE COMPONENTS FOR A DISTINCT, CORPORATE APPEARANCE.



EXPANSION CASEGOODS 46

expansion casegoods



With Expansion Casegoods, Teknion offers a laminate casegoods furniture that creates inviting environments that stimulate collaborative leadership. The product's versatility allows individual to personalize their office to their management and workstyle at different budgets. Expansion Casegoods is easy to specify, assemble and install to minimize client costs. Get it fast, install it fast.

The workstation examples below have been priced with the following finishes:

Surface Finish:	Foundation Laminate
Edge Trim Style:	Straight Trim
Paint Finish:	Mica
Door & Drawer Finish:	Source Laminate
Fabric:	Grade 1

Open Plan – Small Clusters			Unit	Total
1	BADMF171703	Multi-Functional Drawer, 17" d x 17" w x 3" h	345	345
1	BBASB0442	Light Shelf for Wall Panel, 04" d x 42" w – Wall Panel Mounted	119	119
1	BLWPAR5066NN	Wall Panel, with Rail, 50" h x 66" w, No Power & Data – Low Secondary Desk (All Thick)	814	814
1	BMMPL30090N	Primary Worksurface, Laminate Leg, 30" d x 90" w, No Grommet – Low Secondary Desk, 1-3/16"	991	991
1	BMMSDL20102N	Secondary Desk – Low, 20" d x 102" w, 1-3/16"	980	980
1	BFRLW181872L	Freestanding Tower with Full Laminate Door, Wardrobe, 18" d x 18" w, 72" h	1079	1079
1	BRLLF181872L	Tower with Full Laminate Door, File Drawer, 18" d x 18" w, 72" h – Low Secondary Desk Mounted	1058	1058
1	BRLLF181872R	Tower with Full Laminate Door, File Drawer, 18" d x 18" w, 72" h – Low Secondary Desk Mounted	1058	1058
1	BSMSLL1836	Lateral File for Secondary Desk, Low, 18" d x 36" w	678	678
1	BWGLMS30	Laminate Leg, 29" h, 30" d, 1-3/16"	212	212
			Total:	\$ 7334



Contemporary Station (High)			Unit	Total
1	BADMF171703	Multi-Functional Drawer, 17" d x 17" w x 3" h	345	345
1	BASMLH58	Suspended Modesty Panel – Laminate, Half, 58" w	133	133
1	BBASB0430	Light Shelf for Wall Panel, 04" d x 30" w – Wall Panel Mounted	93	93
1	BBASB0472	Light Shelf for Wall Panel, 04" d x 72" w – Wall Panel Mounted	187	187
1	BBWATOR5072	Tackboard for Wall Panel for Overhead Cabinet, From Accessory Rail, 50" h, 72" w	162	162
1	BFCLFF181866L	Freestanding Cubic Tower, File Drawer, Laminate Door, Laminate Door, 18" d x 18" w	1521	1521
1	BHWPAR5030NN	Wall Panel, with Rail, 50" h x 30" w, No Power & Data – High Secondary Desk (All Thick)	430	430
1	BHWPOKR6672NN	Wall Panel for Cubic Overhead, with Rail, 66" h x 72" w, No Power & Data – High Secondary Desk (All Thick)	583	583
1	BMPH30090N	Primary Worksurface, 30" d x 90" w, No Grommet – High Secondary Desk, 1-3/16"	891	891
1	BMMSDH24102N	Secondary Desk – High, 24" d x 102" w, No Grommet, 1-3/16	1207	1207
1	BOKLB187216	Cubic Overhead Cabinet – Laminate Hinged Doors, 18" d x 72" w x 16" h, Wall Panel Mounted	978	978
1	BSSDCNH2430N	Storage Cabinet for Secondary Desk, High, 18" d x 30" w	665	665
1	BSSMCNH2430L	Multi-Functional Storage for Secondary Desk, High, 18" d x 30" w	660	660
1	BWWS30	Frame Leg – Open, 29" h, 30" d	366	366
			Total:	\$ 8221



Classic Station			Unit	Total
1	BMRB2442	Cross Grain Rectangular Bridge, 24" d x 42" w, 1-3/16"	325	325
1	BMRDFQ3084	Rectangular Peninsula Desk with Half Modesty, Square Post, 30" d x 84" w, 1-3/16"	1089	1089
1	BMZHC12484L	Credenza with Single Combo Pedestal, Flush Full Modesty, 24" d x 84" w, 1-3/16"	1999	1999
1	BOCLW168415	Overhead Cabinet – Laminate Hinged Doors, 16" d x 84" w x 15" h, Wall-Mounted	1117	1117
1	BOWTSW5084	Wall-Mounted Tackboard, From Worksurface, 50" h, 84" w	218	218
			Total:	\$ 4748



A close-up photograph of a polished metal handle. The handle has a distinctive cross-shaped top with rounded, slightly irregular edges. The metal is highly reflective, showing clear highlights and shadows. In the background, a blurred white keyboard is visible, suggesting the handle is part of a desk-mounted device. The lighting is soft and even, emphasizing the smooth texture of the metal.

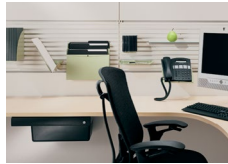
Teknion MAST™
CGM Design

complements

TEKNION HAS LEVERAGED ITS IN-DEPTH UNDERSTANDING OF TODAY'S WORKPLACE TO DEVELOP COMPLEMENTS. THE COMPLEMENTS PROGRAM WAS DEVELOPED TO HELP REDUCE WORKSTATION-RELATED ERGONOMIC INJURIES, AND INCREASE EMPLOYEE PRODUCTIVITY AND WELL-BEING. COMPLEMENTS ERGONOMIC TOOLS HELP MINIMIZE COMPUTER WORKSTATION STRESS, WHILE ACCESSORIES PROMOTE ORGANIZATION AND PERSONALIZATION. START WORKING HEALTHIER SOONER WITH TEKNION XPRESS.



ERGONOMIC ACCESSORIES 50



WORK FLOW ACCESSORIES..... 56



LIGHTING 58



ELECTRICAL..... 59

complements



Ergonomic Accessories include adjustable keyboard arms, visual display tools and Footrest for greater ease, efficiency and comfort while working. For effective ergonomics these workplace products should be selected to accommodate individual physical characteristics, job function and application.

Work Flow Accessories were designed to help users organize their workstations more effectively and efficiently, and enhance personal productivity. With Work Flow Accessories, documents, media and work supplies are visible and easily within reach when required.

Lighting products are offered to allow for proper illumination which is critical to human productivity at work. With adjustable lighting from Teknion's Complements Program, the user has complete control of the position of the lighting and the intensity of illumination required for the task at hand, reducing direct or reflected glare.

ergonomic accessories

Height Adjustable Table		Price
YHRE3	Height Adjustable Table, Increment	*
YHRE5	Height Adjustable Table, Top Crank	*
YHRE7	Height Adjustable Table, Standard Range Electric	*
YHRE9	Height-Adjustable Table, Extended Range Electric	*

*Refer to Complements: *Teknion's Ergonomics & Accessories Program* for product code and list pricing details.



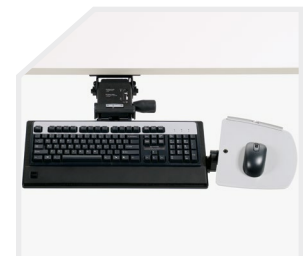
Tiers "T1" Aluminum		Price
YKT1A1	Aluminum Tray with Sit / Stand Arm, +10°/-15° Tilt Range	942
YKT1B1	Aluminum Tray with Extended Arm, +10°/-15° Tilt Range	724
YKT1C1	Aluminum Tray with Standard Arm, +10°/-15° Tilt Range	688
YKT1D1	Aluminum Tray with Space Saver Arm, +10°/-15° Tilt Range	676

Available in Anodized Aluminum only.



Tiers "T2" HDPE		Price
YKT2A1	HDPE Tray with Sit / Stand Arm, +10°/-15° Tilt Range	870
YKT2B1	HDPE Tray with Extended Arm, +10°/-15° Tilt Range	650
YKT2C1	HDPE Tray with Standard Arm, +10°/-15° Tilt Range	614
YKT2D1	HDPE Tray with Space Saver Arm, +10°/-15° Tilt Range	602

Available in Black only.



ergonomic accessories

Tiers "T3" Small Phenolic		Price
YKT3A1	Small Phenolic Tray with Sit / Stand Arm, +10°/-15° Tilt Range	770
YKT3B1	Small Phenolic Tray with Extended Arm, +10°/-15° Tilt Range	558
YKT3C1	Small Phenolic Tray with Standard Arm, +10°/-15° Tilt Range	523
YKT3D1	Small Phenolic Tray with Space Saver Arm, +10°/-15° Tilt Range	512

Available in Speckled Silver Grey Coordinate (YK) and Speckled Granite Coordinate (YN).



Tiers "T4" Large Phenolic		Price
YKT4A11	Large Phenolic, Sit/Stand Arm Mechanism, Standard Length Palmrest	821
YKT4A21	Large Phenolic, Sit/Stand Arm Mechanism, Full Length Palmrest	893
YKT4B11	Large Phenolic, Extended Arm Mechanism, Standard Length Palmrest	602
YKT4B21	Large Phenolic, Extended Arm Mechanism, Full Length Palmrest	673
YKT4C11	Large Phenolic, Standard Arm Mechanism, Standard Length Palmrest	567
YKT4C21	Large Phenolic, Standard Arm Mechanism, Full Length Palmrest	636
YKT4D11	Large Phenolic, Space Saver Arm Mechanism, Standard Length Palmrest	555
YKT4D21	Large Phenolic, Space Saver Arm Mechanism, Full Length Palmrest	625

Available in Speckled Silver Grey Coordinate (YK) and Speckled Granite Coordinate (YN).



Corner Creator		Foundation	Mica
YKCC100F	With Foam Palmrest, 1" Thick	194	208
YKCC100G	With Gel Palmrest, 1" Thick	229	242
YKCC125F	With Foam Palmrest, 1 1/4" Thick	194	208
YKCC125G	With Gel Palmrest, 1 1/4" Thick	229	242



Corner Keyboard Mount		Foundation	Mica
YKCK100	Corner Keyboard Mount, 1" Thick	111	126
YKCK125	Corner Keyboard Mount, 1 1/2" Thick	111	126



Palmrest & Mouse Pad		Price
ACGK	Keyboard Palmrest	98
ACGM	Mouse Pad with Palmrest	111
ACGTS	Tiers Thin Edge Palmrest – Standard Palmrest	93
ACGTT	Tiers Thin Edge Palmrest – T-Edge	98
ACGTE100	Tiers Thin Edge Palmrest – Edge Mounted, 1" Worksurface	149
ACGTE125	Tiers Thin Edge Palmrest – Edge Mounted, 1 1/4" Worksurface	149
ACGTM	Tiers Thin Edge Palmrest – Mouse Rest	87

Available in Black only.



Footrest		Price
YKFR	Fixed Height, Active Angle Adjust	196

Available in Black only.



MAST Dynamic Arm		Price
YMSTD11	MAST Dynamic Arm, Single, Bolt Thru Mount	571
YMSTD12	MAST Dynamic Arm, Single, Standard Edge Clamp	593
YMSTD13	MAST Dynamic Arm, Single, Marketplace Edge Clamp	616
YMSTD14	MAST Dynamic Arm, Single, Round Grommet	593
YMSTD15	MAST Dynamic Arm, Single, Expansion Grommet	616
YMSTD18	MAST Dynamic Arm, Single, Interpret Accessory Beam Mount	616
YMSTD21	MAST Dynamic Arm, Dual, Bolt Thru Mount	1119
YMSTD22	MAST Dynamic Arm, Dual, Standard Edge Clamp	1142
YMSTD23	MAST Dynamic Arm, Dual, Marketplace Edge Clamp	1164
YMSTD24	MAST Dynamic Arm, Dual, Round Grommet	1142
YMSTD25	MAST Dynamic Arm, Dual, Expansion Grommet	1164
YMSTD28	MAST Dynamic Arm, Dual, Interpret Accessory Beam Mount	1164



MAST Dynamic Arm Light		Price
YMSTX11	MAST Dynamic Arm Light, Single, Bolt Thru Mount	571
YMSTX12	MAST Dynamic Arm Light, Single, Standard Edge Clamp	593
YMSTX13	MAST Dynamic Arm Light, Single, Marketplace Edge Clamp	616
YMSTX14	MAST Dynamic Arm Light, Single, Round Grommet	593
YMSTX15	MAST Dynamic Arm Light, Single, Expansion Grommet	616
YMSTX18	MAST Dynamic Arm Light, Single, Interpret Accessory Beam Mount	616
YMSTX21	MAST Dynamic Arm Light, Dual, Bolt Thru Mount	1119
YMSTX22	MAST Dynamic Arm Light, Dual, Standard Edge Clamp	1142
YMSTX23	MAST Dynamic Arm Light, Dual, Marketplace Edge Clamp	1164
YMSTX24	MAST Dynamic Arm Light, Dual, Round Grommet	1142
YMSTX25	MAST Dynamic Arm Light, Dual, Expansion Grommet	1164
YMSTX28	MAST Dynamic Arm Light, Dual, Interpret Accessory Beam Mount	1164



ergonomic accessories

MAST Manual Arm		Price
YMSTM111N	Single, Bolt Thru Mount, None	582
YMSTM111Y	Single, Bolt Thru Mount, Wire Management	667
YMSTM112N	Single, Standard Edge Clamp, None	605
YMSTM112Y	Single, Standard Edge Clamp, Wire Management	689
YMSTM114N	Single, Round Grommet, None	605
YMSTM114Y	Single, Round Grommet, Wire Management	689
YMSTM211N	Dual - Single Height, Bolt Thru Mount, None	915
YMSTM211Y	Dual - Single Height, Bolt Thru Mount, Wire Management	1000
YMSTM212N	Dual - Single Height, Standard Edge Clamp, None	938
YMSTM212Y	Dual - Single Height, Standard Edge Clamp, Wire Management	1023
YMSTM214N	Dual - Single Height, Round Grommet, None	938
YMSTM214Y	Dual - Single Height, Round Grommet, Wire Management	1023
YMSTM221N	Dual - Dual Height, Bolt Thru Mount, None	948
YMSTM221Y	Dual - Dual Height, Bolt Thru Mount, Wire Management	1119
YMSTM224N	Dual - Dual Height, Round Grommet, None	972
YMSTM224Y	Dual - Dual Height, Round Grommet, Wire Management	1142
YMSTM311N	Triple, Bolt Thru Mount, None	1384
YMSTM311Y	Triple, Bolt Thru Mount, Wire Management	1470
YMSTM312N	Triple, Standard Edge Clamp, None	1407
YMSTM312Y	Triple, Standard Edge Clamp, Wire Management	1492
YMSTM314N	Triple, Round Grommet, None	1407
YMSTM314Y	Triple, Round Grommet, Wire Management	1492
YMSTM411N	Quad - Single Height, Bolt Thru Mount, None	1831
YMSTM411Y	Quad - Single Height, Bolt Thru Mount, Wire Management	2000
YMSTM412N	Quad - Single Height, Standard Edge Clamp, None	1876
YMSTM412Y	Quad - Single Height, Standard Edge Clamp, Wire Management	2046
YMSTM414N	Quad - Single Height, Round Grommet, None	1876
YMSTM414Y	Quad - Single Height, Round Grommet, Wire Management	2046
YMSTM421N	Quad - Dual Height, Bolt Thru Mount, None	1616
YMSTM421Y	Quad - Dual Height, Bolt Thru Mount, Wire Management	1785
YMSTM424N	Quad - Dual Height, Round Grommet, None	1639
YMSTM424Y	Quad - Dual Height, Round Grommet, Wire Management	1808



MAST Arm		Price
YMSTADAB	MAST Arm, Dynamic Arm, Angled, Beam / Accessory Element	673
YMSTADAS	MAST Arm, Dynamic Arm, Angled, Stanchion	571
YMSTADSB	MAST Arm, Dynamic Arm, Straight, Beam / Accessory Element	673
YMSTADSS	MAST Arm, Dynamic Arm, Straight, Stanchion	571
YMSTAXAB	MAST Arm, Dynamic Arm Light, Angled, Beam / Accessory Element	673
YMSTAXAS	MAST Arm, Dynamic Arm Light, Angled, Stanchion	571
YMSTAXSB	MAST Arm, Dynamic Arm Light, Straight, Beam / Accessory Element	673
YMSTAXSS	MAST Arm, Dynamic Arm Light, Straight, Stanchion	571
YMSTAMCB	MAST Arm, Manual Arm, Compact, Beam / Accessory Element	475
YMSTAMCS	MAST Arm, Manual Arm, Compact, Stanchion	373
YMSTAMKB	MAST Arm, Manual Arm, Knuckle, Beam / Accessory Element	362
YMSTAMKS	MAST Arm, Manual Arm, Knuckle, Stanchion	260
YMSTAMSB	MAST Arm, Manual Arm, Straight, Beam / Accessory Element	509
YMSTAMSS	MAST Arm, Manual Arm, Straight, Stanchion	407



complements

ergonomic accessories

MAST Stanchion		Price
YMSTSS1N	Single-Height Stanchion, Bolt Thru Mount, None	231
YMSTSS1Y	Single-Height Stanchion, Bolt Thru Mount, Wire Management	316
YMSTSS2N	Single-Height Stanchion, Standard Edge Clamp, None	254
YMSTSS2Y	Single-Height Stanchion, Standard Edge Clamp, Wire Management	340
YMSTSS4N	Single-Height Stanchion, Round Grommet, None	254
YMSTSS4Y	Single-Height Stanchion, Round Grommet, Wire Management	340
YMSTSD1N	Dual-Height Stanchion, Bolt Thru Mount, None	277
YMSTSD1Y	Dual-Height Stanchion, Bolt Thru Mount, Wire Management	362
YMSTSD4N	Dual-Height Stanchion, Round Grommet, None	300
YMSTSD4Y	Dual-Height Stanchion, Round Grommet, Wire Management	384



MAST Workstation Beam		Price
YMSTBW421NN	42" Width, Bolt Thru Mount, None	852
YMSTBW421Y1	42" Width, Bolt Thru Mount, Vertical Wire Column - Qty 1	938
YMSTBW421Y2	42" Width, Bolt Thru Mount, Vertical Wire Column - Qty 2	1023
YMSTBW422NN	42" Width, Standard Edge Clamp, None	899
YMSTBW422Y1	42" Width, Standard Edge Clamp, Vertical Wire Column - Qty 1	983
YMSTBW422Y2	42" Width, Standard Edge Clamp, Vertical Wire Column - Qty 2	1068
YMSTBW424NN	42" Width, Round Grommet, None	899
YMSTBW424Y1	42" Width, Round Grommet, Vertical Wire Column - Qty 1	983
YMSTBW424Y2	42" Width, Round Grommet, Vertical Wire Column - Qty 2	1068



MAST Laptop Holder		Price
YMSTL1	MAST Laptop Platform, Laptop Only	350
YMSTL2	MAST Laptop Platform, Laptop & Docking Station	396



MAST Quick Release Vesa Plate		Price
YMSTV	MAST Quick Release VESA Plate	68



CPU Holder		Price
ACPU1	Fixed, no Lock	193
ACPU2	Retractable, Swivel, no Lock	321
ACPU3	Retractable, Swivel, with Lock	446

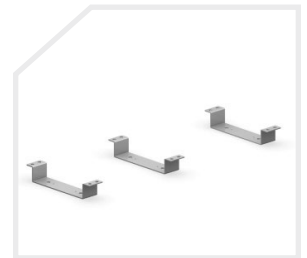
Available in Black only.



Technology Support Holder		Price
YKTS1	Technology Support Holder, Fixed / Swivel	354
YKTS2	Technology Support Holder, Retractable / Swivel	373



Accessories Offset Mount		Price
YKMT1100	Accessories Offset Mount, YKT_ Tiers Keyboards, 1" Offset	95
YKMT1125	Accessories Offset Mount, YKT_ Tiers Keyboards, 1.25" Offset	95
YKMT1150	Accessories Offset Mount, YKT_ Tiers Keyboards, 1.5" Offset	95
YKMT4100	Accessories Offset Mount, ACP2 & 3 CPU Holders, 1" Offset	95
YKMT4125	Accessories Offset Mount, ACP2 & 3 CPU Holders, 1.25" Offset	95
YKMT4150	Accessories Offset Mount, ACP2 & 3 CPU Holders, 1.5" Offset	95
YKMT4250	Accessories Offset Mount, ACP2 & 3 CPU Holders, 2.5" Offset	112



Keyboard Support Backstop		Price
YKST	Keyboard Support Backstop	38



complements

work flow accessories

Personal Organizers		Foundation/ Accent	Mica
PAX90	Divisional Sorter, Letter/A4	33	52
PAX91	Divisional Sorter, Legal	35	54
PAX92	Tray, Letter/A4	38	55
PAX93	Tray, Legal	39	56
PAX94	Pencil Tray	26	33
PAX95	Binder Bin	39	56
PAX96	Media Organizer	36	42
PAX97	Telephone Shelf, Small	57	66
PAX98	Telephone Shelf, Large	61	71
PAX99	Vertical Organizer, Letter/A4	59	69
PAX100	Vertical Organizer, Legal	64	71



Pencil Drawer		Price
DP150	Pencil Drawer	59

Drawer is available in Black only.
Mounting Brackets are available in Foundation colors.



Organizing Trays		Price
YW0T1	Table Top Kit (8 pcs.)	176
YW0T2	Stacker Tray Kit (3 pcs.)	136



Workstation Signage		Price
ACWS	For T/O/S, Transit, xm, Ability	95
ACWS1	For Leverage	95

Available in an Anodized Aluminum frame and Black Plastic end caps.



work flow accessories

Coat Hooks		Foundation	Accent	Mica
AP100	T/O/S, Coat Hook	27	27	33
AP600	T/O/S, All-Purpose Hook (package of 6 hooks)	44	44	56



Desk Pad		Price
YPDP	Desk Pad	517



Lighting

Sanna Lightbar		Mica Crisp Grey (25)
YLSR14007	Freestanding, A, Heather Felt	631
YLSR14046	Freestanding, A, Fine Grain	631
YLSR14007	Freestanding, C or G, Heather Felt	669
YLSR14046	Freestanding, C or G, Fine Grain	678
YLSR2N000	Edge Clamp, A, No Insert	581
YLSR2	Edge Clamp, C or G	619
YLSR3N000	Thru, A, No Insert	581
YLSR3	Thru, C or G	619

Country of installation option Canada/USA (A), Europlug (Schuko) or United Kingdom (BS1363)



electrical

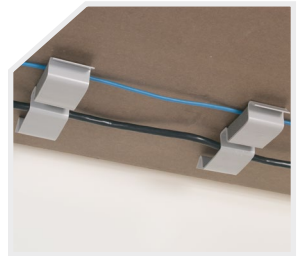
Power Rod		Price
YEPD1A	Power Rod, Desk Clamp w/ Self-Tapping Screws	196
YEPD2A	Power Rod, Under-Worksurface Mount	196
YEPD3A	Power Rod, Lyft Base Mount	196
YEPD4A	Power Rod, Accessories Element Mount	196
YEPD5A	Power Rod, Market Place Edge Mount	235



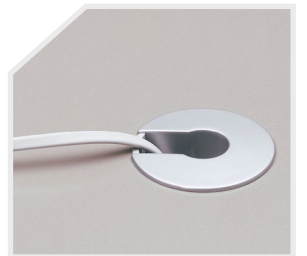
Vertical Wire Manager		Price
AETF1	Vertical Wire Manager, Grey	196
AETF2	Vertical Wire Manager, Black	196



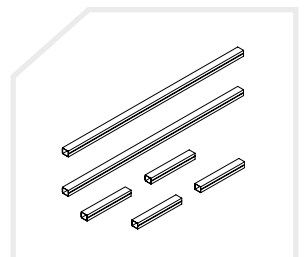
Worksurface Wire Clip		Price
YESW	Worksurface Wire Clips (6 clips)	38



Round Diecast Grommet		Price
YEDG1	Round Diecast Grommet, Round	55
YEDG2	Round Diecast Grommet, Square	65



Casual Wire Manager Kit		Price
ZOEW	Casual Wire Management Kit	44



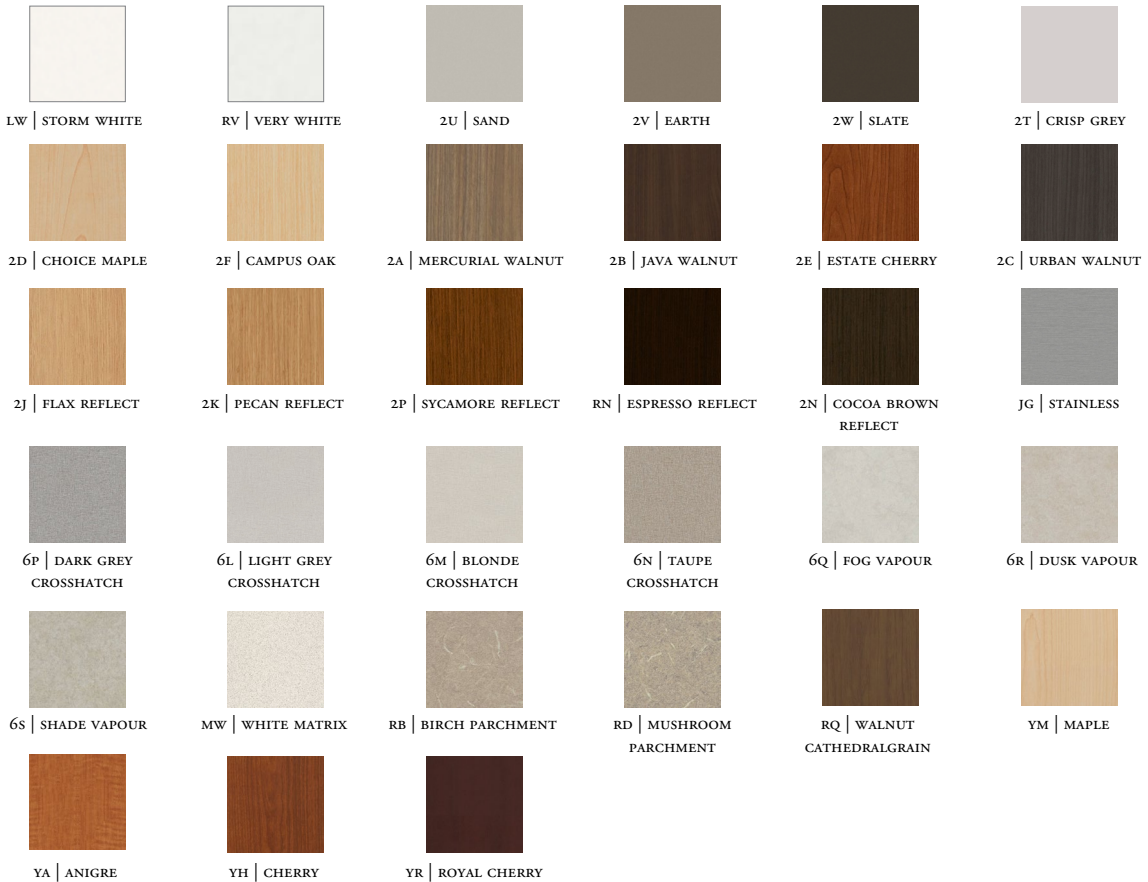
fabrics & finishes

Leverage, Marketplace, Tables, Desking, Expansion
Casegoods, Thesis & Complements

SOURCE LAMINATE




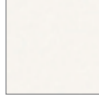
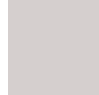







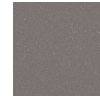

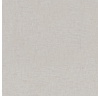


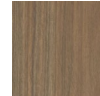
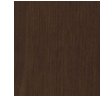

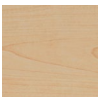

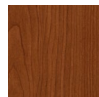
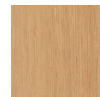

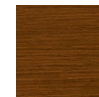
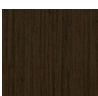
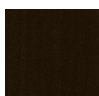
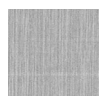


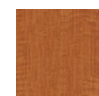
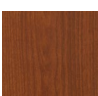
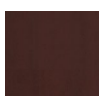
FOUNDATION LAMINATE



Finishes represented are digital and intended to provide an overview of the fabrics and finishes offered. Please refer to individual samples to view actual materials prior to specifying.

Leverage, Marketplace, Tables, Desking, Expansion Casegoods, Thesis & Complements (continued)

EDGE TRIM COLORS

					
SS VERY WHITE	ST STORM WHITE	4T CRISP GREY	4U SAND	4V EARTH	4W SLATE
					
JY GRANITE	BL BLACK	NV NEVADA	UT LATTE	DK EVENING STONE	SM ALUMINUM ACRYLIC
					
4Y LIGHT GREY CROSSHATCH	4X TAUPE CROSSHATCH	4Z DARK GREY CROSSHATCH	4A MERCURIAL WALNUT	4B JAVA WALNUT	4C URBAN WALNUT
					
4D CHOICE MAPLE	4F CAMPUS OAK	4E ESTATE CHERRY	4J FLAX REFLECT	4K PECAN REFLECT	4P SYCAMORE REFLECT
					
4N COCOA BROWN REFLECT	SW ESPRESSO REFLECT	SV STAINLESS	SZ WALNUT CATHEDRALGRAIN	SB MAPLE PRINT	SE ANIGRE PRINT
					
SD CHERRY PRINT	SJ ROYAL CHERRY PRINT				

FOUNDATION

					
N NEVADA	G GREY	J GRANITE	E EBONY	Q STORM WHITE	C LATTE
					
P ESPRESSO	6 CRISP GREY	B SOFT GRIS	3 SAND	4 EARTH	5 SLATE

Finishes represented are digital and intended to provide an overview of the fabrics and finishes offered. Please refer to individual samples to view actual materials prior to specifying.

fabrics & finishes

Leverage, Marketplace, Desking, Expansion Casegoods

MICA



V | VERY WHITE



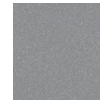
7 | PLATINUM



L | GRAPHIC STEEL



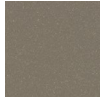
8 | ARCTIC



K | SILVER



9 | PATINA



R | BRONZE



M | GRAPHITE



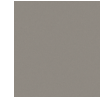
X | ANTHRACITE



S | SEPIA BRONZE



2 | BURNISHED BRONZE



F | TITANIUM GREY



I | GILDED ASH

ACCENT PAINT (FOR THESIS ONLY)



90 | TANGELO



91 | GALA



92 | AZURE



93 | AQUA



94 | VERDE



95 | GRIS



96 | AIRCRAFT PRIMER



12 | CRIMSON



14 | BUTTERNUT



13 | PALM



11 | MINERAL TEAL



16 | PLUM



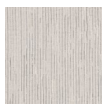
15 | TERRA COTTA

Finishes represented are digital and intended to provide an overview of the fabrics and finishes offered. Please refer to individual samples to view actual materials prior to specifying.

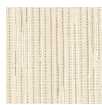
Seating

Panel Fabrics – Grade A

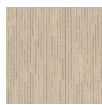
TANGLE



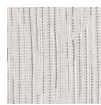
T532 | KNOT



T533 | INTERWEAVE

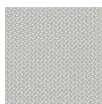


T534 | RAVEL

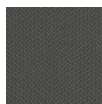


T531 | SNARL

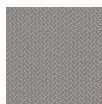
WALES



W417 | BANGOR



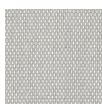
W414 | WREXHAM



W402 | SWANSEA

Panel Fabrics – Grade 1

INDIA



D418 | PUSHKAR



D417 | KASHMIR

MAKAH



M418 | SOLANO



M416 | LUMINOUS

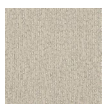


M415 | SHAKER



M419 | FLICH

PERU



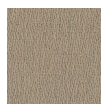
P402 | NAZCA



P405 | PUNO



P407 | TINGO MARIA

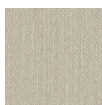


P403 | LIMA



P411 | TUMBES

WARP SPEED



W113 | REED ARROW



W110 | HEADWIND



W114 | JET

Finishes represented are digital and intended to provide an overview of the fabrics and finishes offered. Please refer to individual samples to view actual materials prior to specifying.

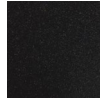
fabrics & finishes

Seating (continued)

NAMI



7Y | STORM WHITE



7F | EBONY

PROJEK

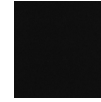


8B | EBONY



8C | VERY WHITE

SABRINA



52 | EBONY

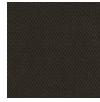
VOLUME



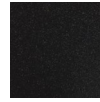
7Y | STORM WHITE



7L | LATTE

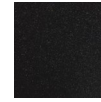


7E | ESPRESSO



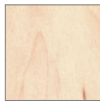
7F | EBONY

ZONE



E | EBONY

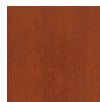
SYNAPSE & TAIGA



MP | NATURAL MAPLE



WW | WINDSOR
CHERRY



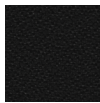
WH | CHESTNUT
CHERRY



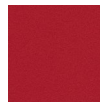
WT | MAHOGANY
WALNUT

Seating Fabrics – Grade 1

FUNDAMENTALS



E523 | BLACK



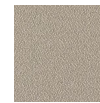
E505 | BANNER



E516 | PARAKEET



E532 | DOVE



E535 | LATTE

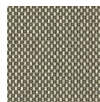
MAGNIFY



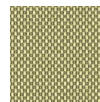
M143 | ZOOM LENS



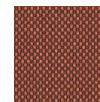
M145 | LONG WAVE



M140 | TELESCOPE



M147 | LIGHT BEAM



M148 | FLARE UP

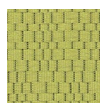
STIMULI



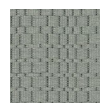
S146 | TURBINADO



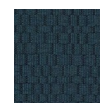
S147 | RUSH



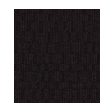
S148 | ZEST



S149 | TACTILE



S154 | CATALYST



S155 | BLACK TEA

Finishes represented are digital and intended to provide an overview of the fabrics and finishes offered. Please refer to individual samples to view actual materials prior to specifying.

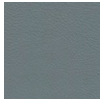
Filing & Storage

Seating Fabrics – Grade 2

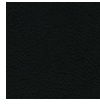
FINE GRAIN



F403 | SAW DUST



F407 | METALLIC SWARF



F409 | CARBON NEUTRAL

CROSS DYE



CI31 | ARTICHOKE



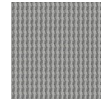
CI34 | AZURE



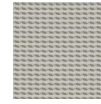
CI35 | LOGWOOD



CI28 | CRIMSON



CI24 | SOFT SHADOW



CI21 | LINEN

LEATHER – GRADE LA



LIO4 | BLACK

CONTESSA TESS MESH

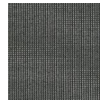


FBH3 | LIGHT GREY



FBHI | BLACK

PROJEK SHRINX MESH



S4 | VEIL NOIR



S6 | VEIL GRAU

SABRINA MESH



SBI5 | IRON

Finishes represented are digital and intended to provide an overview of the fabrics and finishes offered. Please refer to individual samples to view actual materials prior to specifying.

teknion

www.teknion.com

IN CANADA:

1150 Flint Road
Toronto, Ontario
M3J 2J5 Canada
Tel 866.teknion
866.835.6466

IN THE USA:

350 Fellowship Road
Mt Laurel, New Jersey
08054 USA
Tel 877.teknion
877.835.6466

OTHER OFFICES LOCATED IN:

Europe, South and Central America
Middle East, Asia and Russia
For regional contact information
go to www.teknion.com

US 01-27

©Teknion 2020

®, ™ trade marks of Teknion Corporation and/or its subsidiaries or licensed to it. Patents may be pending.

Some products may not be available in all markets. Contact your local Teknion Representative for availability.

JAN20-XPR-US