

# LUUM

**Name**

Median

**Designer**

Suzanne Tick

**Style No.**

2006

**Collection**

Kinetic Energy

**Use**

Upholstery  
 Wrapped Wall  
 Panel  
 Screens

**Content**

60% Polyester  
 40% Recycled Polyester

**Abrasion**

Wyzenbeek  
 60,000 double rubs

**Environmental**

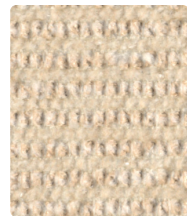
Recycled Content  
 PFAS Free Stain  
 Repellent



Jaune 2006-10



Calcofluor 2006-06



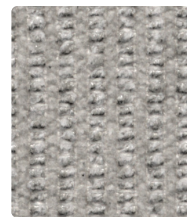
Leblanc 2006-09



Condensata 2006-05



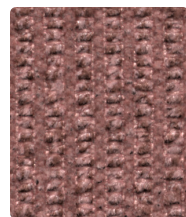
Birch Leaf 2006-08



Downy Phlox 2006-04



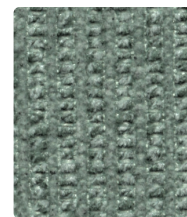
Alder Cone 2006-07



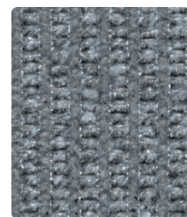
Rubia 2006-14



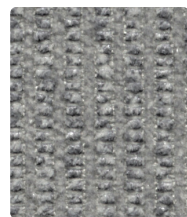
Grana 2006-11



Popinjay 2006-20



Prairie Bluet 2006-19



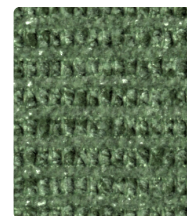
Metallic Salt 2006-03



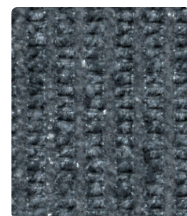
Murex 2006-15



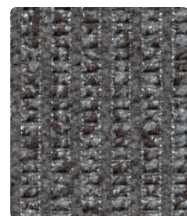
Comandra 2006-12



Herbal 2006-21



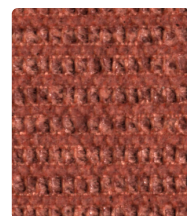
Tinctoria 2006-18



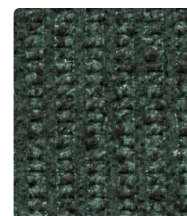
Cinquefoil 2006-02



Phoenician 2006-16



Mignonette 2006-13



Verdulet 2006-22



Isatia 2006-17



Bracken 2006-01

**Name**

**Median**

**Style No.**

**2006**

**Designer**

Suzanne Tick

**Specification**

**Use:** Upholstery/Wrapped Wall/Panel/Screens  
**Content:** 60% Polyester, 40% Recycled Polyester (Post Consumer)  
**Weight:** 11.6 +/- 0.5 oz per linear yard  
**Width:** 54"  
**Pattern Repeat:** None  
**Directional:** Yes

**Finish**

PFAS Free Stain Repellent

**Performance**

**Abrasion:** ASTM D4157 Wyzenbeek 60,000 double rubs  
**Breaking Strength:** ASTM D5034 Warp 300 lbf, Fill 200 lbf  
**Seam Slippage:** ASTM D4034 Warp 100 lbf, Fill 125 lbf  
**Colorfastness to Light:** AATCC 16, Grade 4 at 40 Hours  
**Colorfastness to Crocking:** AATCC 8, Wet Class 3-4, Dry Class 4  
**Pilling:** ASTM D3511 (Brush Pill), Class 4

**Acoustical Rating**

Fabric Transparency 0.80, NRC 0.70 tested to ISO 10534-2 standards

**Flame Retardancy**

Cal TB 117-2013, NFPA 260, UFAC Class 1  
 ASTM E84 Unadhered Class A or 1

**Maintenance**

W, Clean with a water-based cleaning agent. Do not use solvent products.

**Environmental**

Recycled Content  
 PFAS Free Stain Repellent

**Origin**

USA

Dye lots may vary slightly from samples shown. Samples shown off the bolt.



**Canada**

877.705.LUUM  
 luumtextiles.ca

**USA**

877.705.LUUM  
 luumtextiles.com

**International**

919.464.2922  
 luumtextiles.com

cdn/us/int/09-24

© Luum™ 2024, all rights reserved.

\* ,™ Trademarks used under license by Luum™, Median™

\*Certification Marks owned by the Association for Contract Textiles, Inc.

Abrasion test results exceeding ACT Performance Guidelines are not an indicator of product lifespan. Multiple factors affect fabric durability and appearance retention.

U4-A3-P5-SC-305-2006