

LUUM

Twisted Tweed

Name

Twisted Tweed

Designer

Suzanne Tick

Style No.

4096

Collection

Outdoor In

Use

Upholstery
Wrapped Wall
Panel
Screens

Content

100% Recycled Polyester

Abrasion

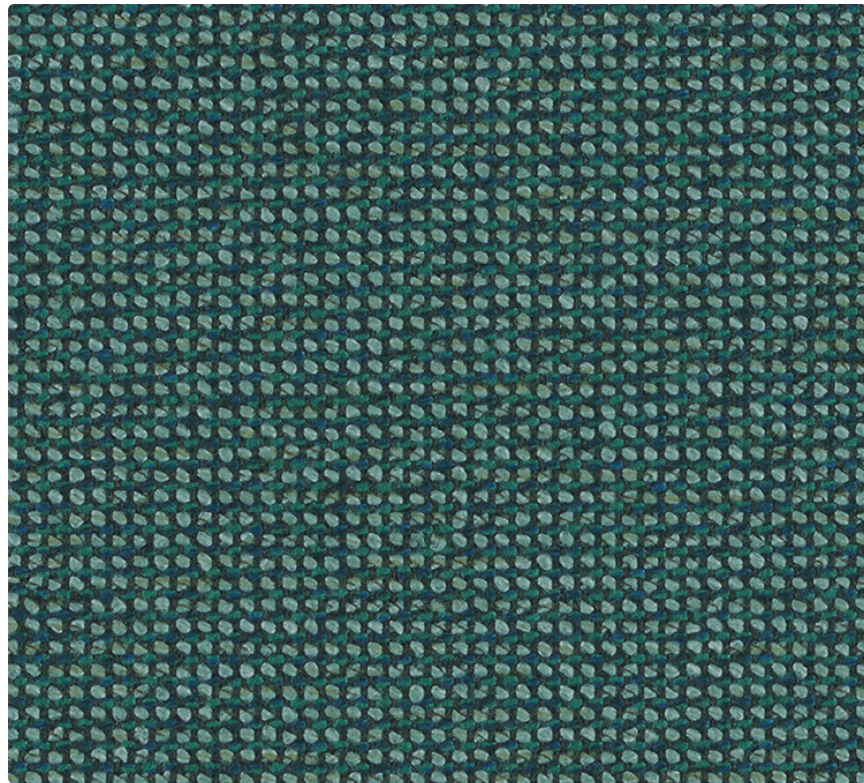
Wyzenbeek
102,000 double rubs**

Special

Characteristics
Bleach Cleanable

Environmental

Recycled Content
PFOA/PFOS Free Stain
Repellent



Veranda 4096-19



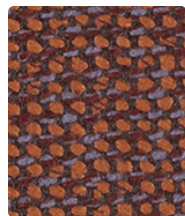
Stucco 4096-06



Plaster 4096-05



Moongate 4096-04



Koi Pond 4096-11



Sundial 4096-10



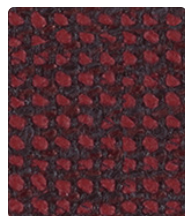
Daylight 4096-09



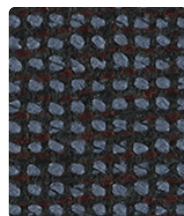
Thatch 4096-07



Shady Patch 4096-03



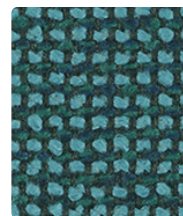
Brickwork 4096-12



Annual 4096-13



Water Feature 4096-17



Terrace 4096-18



Rock Garden 4096-02



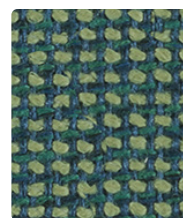
Perennial 4096-14



Rain Chain 4096-15



Open Air 4096-16



Arbor 4096-08



Wrought Iron 4096-01

Name **Twisted Tweed**

Style No. **4096**

Designer Suzanne Tick

Specification Use: Upholstery/Wrapped Wall/Panel/Screens
Content: 100% Recycled Polyester (Postconsumer)
Weight: 19 oz per linear yard
Width: 54"
Pattern Repeat: None
Directional: Yes

Finish Acrylic Backing
Stain Repellent

Performance Abrasion: ASTM D4157 Wyzenbeek 102,000 double rubs**
Breaking Strength: ASTM D5034 Warp 196 lbf, Fill 180 lbf
Seam Slippage: ASTM D4034 Warp 81 lbf, Fill 90 lbf
Colorfastness to Light: AATCC 16, Grade 5 at 40 Hours
Colorfastness to Crocking: AATCC 8, Wet Class 5, Dry Class 5
Pilling: ASTM D3511 (Brush Pill), Class 4

Acoustical Rating Fabric Transparency 0.90, NRC 0.65 tested to ISO 10534-2 standards

Flame Retardancy Cal TB 117-2013

Maintenance WS, Clean with either a water-based or solvent-based cleaning agent.
Bleach Cleanable: 9% (10:1 Ratio), wipe with water after solution.

Environmental Recycled Content
PFOA/PFOS Free Stain Repellent

Origin USA

Dye lots may vary slightly from samples shown. Samples shown off the bolt.



Canada
877.705.LUUM
luumtextiles.ca

USA
877.705.LUUM
luumtextiles.com

International
919.464.2922
luumtextiles.com

cdn/us/int/09-21

© Luum™ 2021, all rights reserved.

*™ Trademarks used under license by Luum™, Twisted Tweed™

** Multiple factors affect fabric durability and appearance retention, including end-user application and proper maintenance.

Wyzenbeek results over 100,000 double rubs have not been shown to be a reliable indicator of increased fabric lifespan.

*Certification Marks owned by the Association for Contract Textiles, Inc.

U3-A3-P4-SC-305-4096