

LUUM

Good Vibrations Collection

01 — 2024



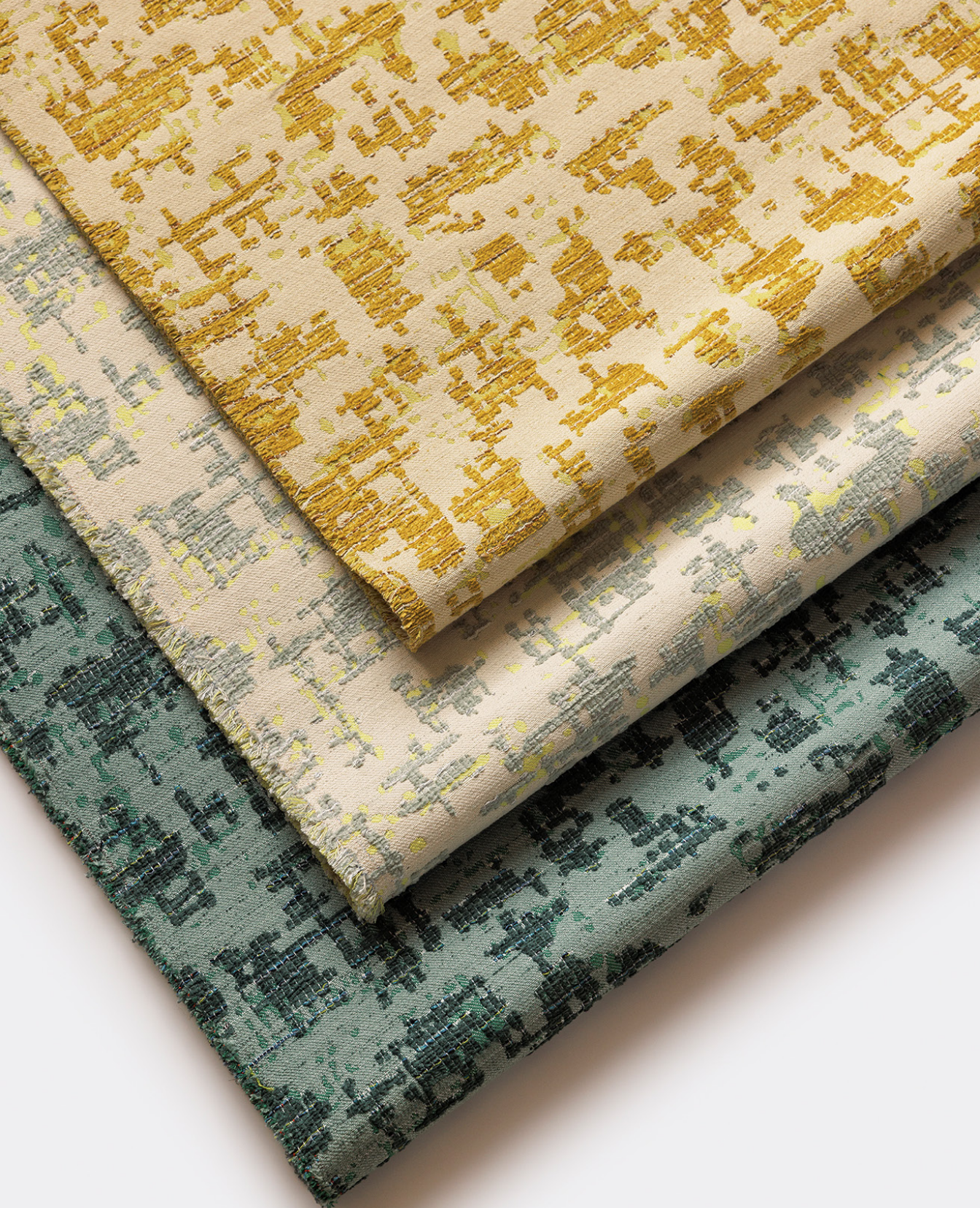
Good Vibrations Collection

The *Good Vibrations* collection by Suzanne Tick features five sustainable textiles that invite us to get on the same wavelength and put nature first. Gestures of static, frequency, and vibration are emulated in textile form, promoting the powerful forces of energy that connect us worldwide—evoking warmth, adaptability, and joy.

Organic, heathered, textural and dappled, the *Good Vibrations* collection offers color studies that are both bold and complementary. Blends of hues within abstract patterns create an overall complex plane of color to transform contemporary spaces into impactful places to repose and connect.

Most importantly, the five materials in the collection—spanning upholstery, wrapped wall, panel and direct glue—are all North American made and contain a percentage of recycled content, for a true climate-conscious toolkit that embodies both luxury and performance.





1. Soft Static

Collection: Good Vibrations
Designer: Suzanne Tick

Use: Upholstery

Soft Static is a multi-color, midscale upholstery textile inspired by the concept of energy at rest. Welcoming and tactile, *Soft Static* uses a combination of materials to play with positive and negative space, lifting an organic pattern across a reverberating plane for a feeling of static.

1 ——— **Soft Static**

Use: Upholstery

Content: 77% Recycled Polyester (Postconsumer) + 22% Polyester + 1% Nylon

Number of Colorways: 9

(shown on chair): Whirr

(shown left, top to bottom): Carrilon, Whirr, Ambient Nature

Abrasion: Wyzenbeek 102,000 double rubs

Special Characteristics: Bleach Cleanable, Heavy Metal Free, REACH Regulation Compliant

To create a variegated surface on a backdrop of dappled color, moments of chenille weave softness throughout the textile while a 6-ply multi-color habu boucle yarn runs through the weft. *Soft Static's* 9 bleach cleanable colors contain 76% recycled content, sharing yarns with High Frequency for ease of coordination.



2 — High Frequency

Inspired by its namesake, *High Frequency* visualizes the energy of sound with an abundance of boucle habu yarn. Like high frequencies, the most noticeable pitches on the auditory scale, the material makeup of this yarn creates a visual texture that's both impactful and instantaneous—twisting 6 yarns together at different levels of tension. This multi-purpose and acoustically-transparent textile amplifies the energy of walls, panels, and furniture with color and texture. Featuring 87% recycled polyester, *High Frequency* coordinates with *Soft Static* in 16 bleach cleanable colorways.

Use: Multipurpose

Content: 87% Recycled Polyester (Postconsumer) + 12% Polyester + 1% Nylon

Number of Colorways: 16 (*shown here, top to bottom*): Moon Illusion, Plane Wave

Abrasion: Wyzenbeek 105,000 double rubs

Special Characteristics: Bleach Cleanable, Heavy Metal Free, REACH Regulation Compliant

3 — Super Shearling

Super Shearling's fluffy, nubby pile is due to its weave structure, which allows renewable wool fiber to express the volume and softness of its natural character. Plush to the touch and incredibly upholsterable, *Super Shearling* forms beautifully to the curves of furniture, elevating the texture of seating. With 20 custom piece dyed colors, *Super Shearling* weaves the timeless luxury of wool with pops of bold and contemporary color to create cozy, classic interiors.

Use: Upholstery

Content: 60% Wool + 28% Recycled Nylon (Preconsumer) + 12% Nylon

Number of Colorways: 20 (*shown here, top to bottom*): Green Sap, Conifer, Carissa, Blackcurrant, Lupine

Abrasion: Martindale 50,000 Cycles

Special Characteristics: Renewable Content, Recycled Content, Heavy Metal Free, REACH Regulation Compliant

4 — Texture Map

As Luum's fifth recycled, biodegradable, polyester textile, *Texture Map* joins *Grid State*, *Ecotone*, *Biotope*, and *Intraweb* as yet another sustainable solution for multipurpose spaces—with a biocatalyst additive in its cationic, disperse, and solution-dyed fibers that will biodegrade the textile at the end of its life. Yarn by yarn, *Texture Map's* jacquard construction creates a staccato-like surface, punctuated by heathered weft yarns for a structural feel.

Use: Multipurpose

Content: 100% Recycled Biodegradable* Polyester (Postconsumer)

Number of Colorways: 16 (*shown here, top to bottom*): Windblown Silt, Elm Pollen, Miocene, Green Algae, Water Table

Abrasion: Wyzenbeek 70,000 double rubs

Special Characteristics: Recycled Content, Biodegradable*, PFAS Free Stain Repellent, Facts 3rd-party certified to NSF/ANSI 33t

5 — Impasto

Impasto is an organic, direct-glue wall-covering that evokes the natural texture of grasscloth. Its jacquard pattern and slub yarn give the illusion of movement through warp and weft—adding intrigue, dimension, and multidirectionality to walls. Comprised of 51% recycled content, *Impasto's* 6 bleach cleanable light neutrals pair low product maintenance with high visual impact.

Use: Direct Glue Wall

Content: 51% Recycled Polyester (Postconsumer) + 49% Polyester

Number of Colorways: 6 (*shown here, left to right*): Eggshell, Alabaster, Perlite

Special Characteristics: Bleach Cleanable, Recycled Content, Heavy Metal Free, PFAS Free Stain Repellent



USA, Canada 877.705.LUUM
International 919.464.2922

luumtextiles.com



5. Impasto

1. Soft Static & 2. High Frequency

4. Texture Map

