

**Name**  
Actuate

**Designer**  
Suzanne Tick

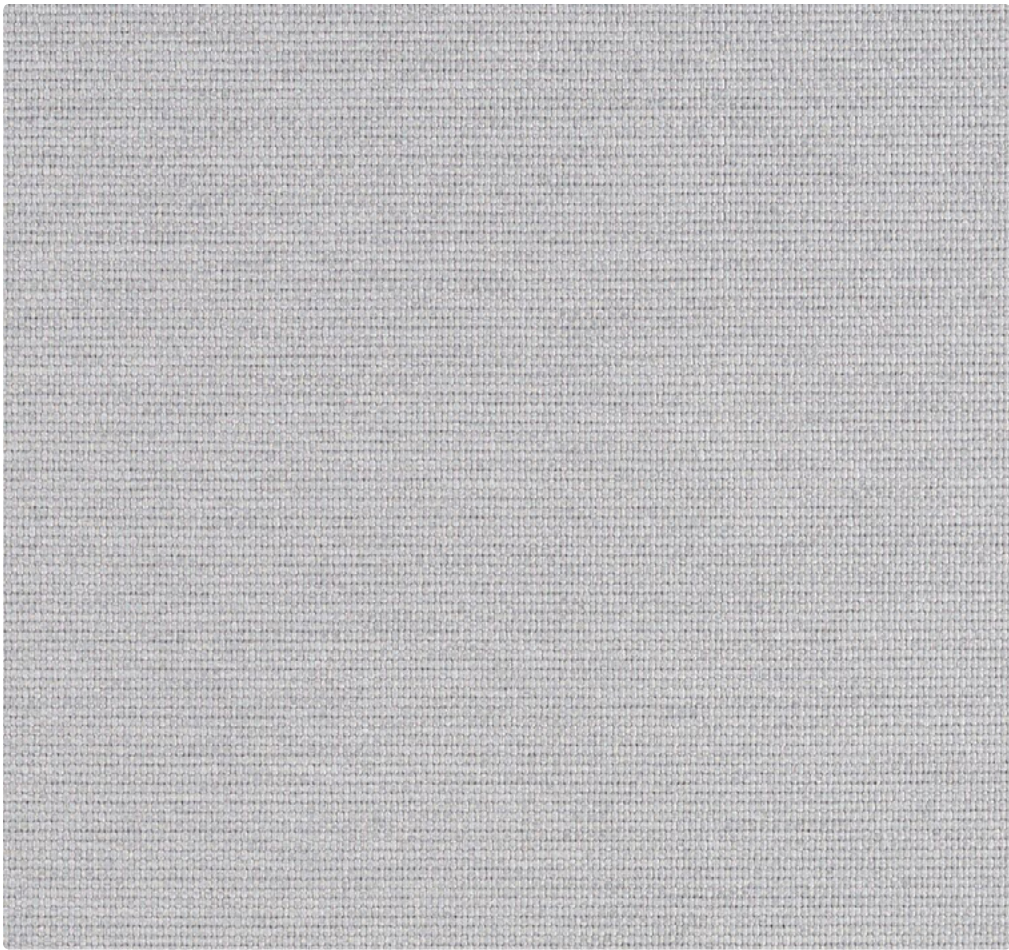
**Style No.**  
4073

**Use**  
Upholstery  
Wrapped Wall  
Panel

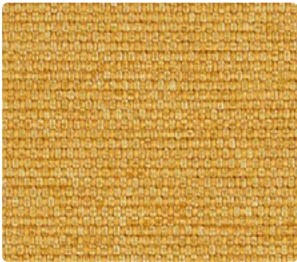
**Content**  
60% Polyester +  
40% Recycled Polyester

**Abrasion**  
Wyzenbeek  
100,000 double rubs

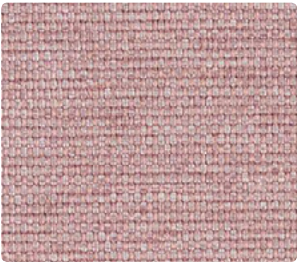
**Environmental**  
Heavy Metal Free  
PFOA/PFOS Free  
Stain Repellent  
Recycled Content



Syntax 4073-05



Lambent 4073-09



Prelude 4073-13



Thermal 4073-15



Conscious 4073-10



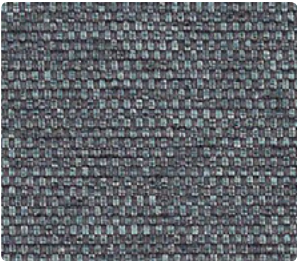
Meridian 4073-14



Induction 4073-16



Fortify 4073-11



Favrile 4073-12



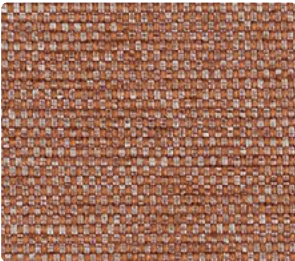
Aqueous 4073-01



Vanish 4073-06



Suffuse 4073-07



Mordant 4073-08



Facet 4073-04



Aether 4073-03



Spectral 4073-02



Actuate



Actuate  
by Luum

Actuate is a classic and versatile tonal texture. Technical fibers in a multifaceted basket weave are softened by integrating a unique yarn that combines rich colors with subtle luster. This blended yarn interrupts the balanced weave structure to create organic movement and visual interest. The next evolution of Percept, Actuate expands the offering of resonant colors in this versatile and high performance construction. Archetypal colors pair with harmonious light tones for an unexpected and contemporary palette.

Name

Style No.

Designer

Specification

Finish

Performance

Flame Retardancy

Maintenance

Environmental

Origin

Actuate  
4073

Suzanne Tick

**Use:** Upholstery/Wrapped Wall/Panel  
**Content:** 60% Polyester + 40% Recycled Polyester (Postconsumer)  
**Weight:** 18.8 oz per linear yard  
**Width:** 54"  
**Pattern Repeat:** None  
**Directional:** No

Latex Backing, Stain Repellent

**Abrasion:** ASTM D4157 Wyzenbeek 100,000 double rubs  
**Breaking Strength:** ASTM D5034 Warp 272 lbf, Fill 374 lbf  
**Seam Slippage:** ASTM D4034 Warp 73 lbf, Fill 54 lbf  
**Colorfastness to Light:** AATCC 16, Grade 4 at 40 Hours  
**Colorfastness to Crocking:** AATCC 8, Wet Class 4.5, Dry Class 4.5  
**Pilling:** ASTM D3511 (Brush Pill), Class 5

Cal TB 117-2013, UFAC Class 1, NFPA 260  
ASTM E84 Unadhered Class A

WS, Clean with either a water-based or solvent-based cleaning agent.

Heavy Metal Free  
PFOA/PFOS Free Stain Repellent  
Recycled Content

USA

Dye lots may vary slightly from samples shown. Samples shown off the bolt.



**Canada**  
877.705.LUUM  
luumtextiles.ca

**USA**  
877.705.LUUM  
luumtextiles.com

**International**  
919.464.2922  
luumtextiles.com

cdn/us/int/05-19

© Luum™ 2019, all rights reserved.  
\*,™ Trademarks used under license by Luum™, Actuate™  
\*Certification Marks owned by the Association for Contract Textiles, Inc.

U2-P2-SC-305-4073