

LUUM

Demi Boucle

Name

Demi Boucle

Designer

Suzanne Tick

Style No.

2005

Collection

Twist on a Classic

Use

Upholstery
Wrapped Wall
Panel
Screens

Content

100% Recycled Polyester

Abrasion

Wyzenbeek
100,000 double rubs

Special Characteristics

Bleach Cleanable

Environmental

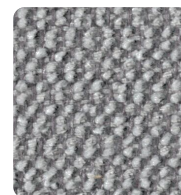
Recycled Content
Heavy Metal Free
REACH Regulation
Compliant



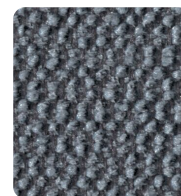
Wishbone
2005-03



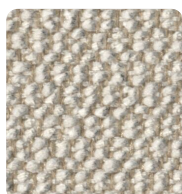
Epsom
2005-04



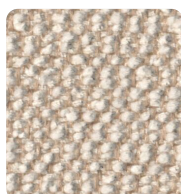
Talc
2005-05



Igneous
2005-06



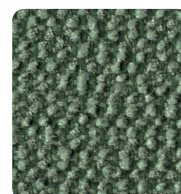
Wishbone
2005-03



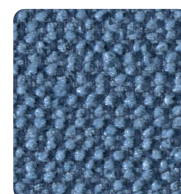
Spun Sugar
2005-13



Moss-Rose
2005-12



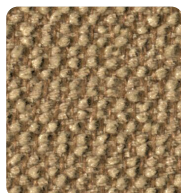
Sea Glass
2005-16



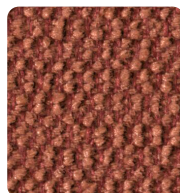
Cloudberry
2005-07



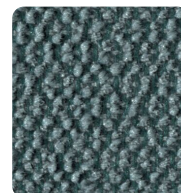
Chia
2005-02



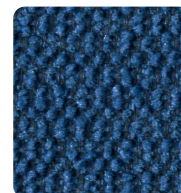
Sanddollar
2005-14



Desert Peach
2005-11



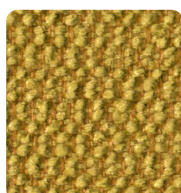
Scarab
2005-17



Downpour
2005-08



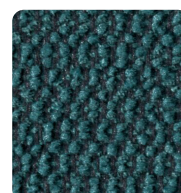
Caviar
2005-01



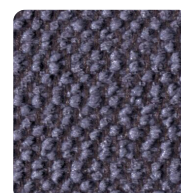
Chamomile
2005-15



Keemun
2005-10



Nori
2005-18



Crocus
2005-09

LUUM

Name	—————	Demi Boucle
Style No.	—————	2005
Designer		Suzanne Tick
Specification		Use: Upholstery, Wrapped Wall, Panel, Screens Content: 100% Recycled Polyester (Postconsumer) Weight: 25 oz per linear yard Width: 54" Pattern Repeat: None Directional: Yes
Finish		Acrylic Backing
Performance		Abrasion: ASTM D4157 Wyzenbeek 100,000 double rubs Breaking Strength: ASTM D5034 Warp 141 lbf, Fill 274 lbf Seam Slippage: ASTM D4034 Warp 61.4 lbf, Fill 112 lbf Colorfastness to Light: AATCC 16, Grade 5 at 40 Hours Colorfastness to Crocking: AATCC 8, Wet Class 5, Dry Class 5 Pilling: ASTM D3511 (Brush Pill), Class 5
Acoustical Rating		Fabric Transparency 0.95, NRC 0.65 tested to ISO 10534-2 standards
Flame Retardancy		Cal TB 117-2013, ASTM E84 Unadhered Class A or 1
Maintenance		WS, Clean with either a water-based or solvent-based cleaning agent. Bleach Cleanable: 9% (10:1 Ratio), wipe with water after solution.
Environmental		Recycled Content Heavy Metal Free REACH Regulation Compliant
Origin		Canada



Canada
877.705.LUUM
luumtextiles.ca

USA
877.705.LUUM
luumtextiles.com

International
919.464.2922
luumtextiles.com

cdn/us/int/05-24

© Luum™ 2024, all rights reserved.

*,™ Trademarks used under license by Luum™, Demi Boucle™

*Certification Marks owned by the Association for Contract Textiles, Inc.

Abrasion test results exceeding ACT Performance Guidelines are not an indicator of product lifespan. Multiple factors affect fabric durability and appearance retention.

U4-P6-A4-SC-305-2005