

**Name**  
Contrast Slub

**Designer**  
Suzanne Tick

**Style No.**  
4115

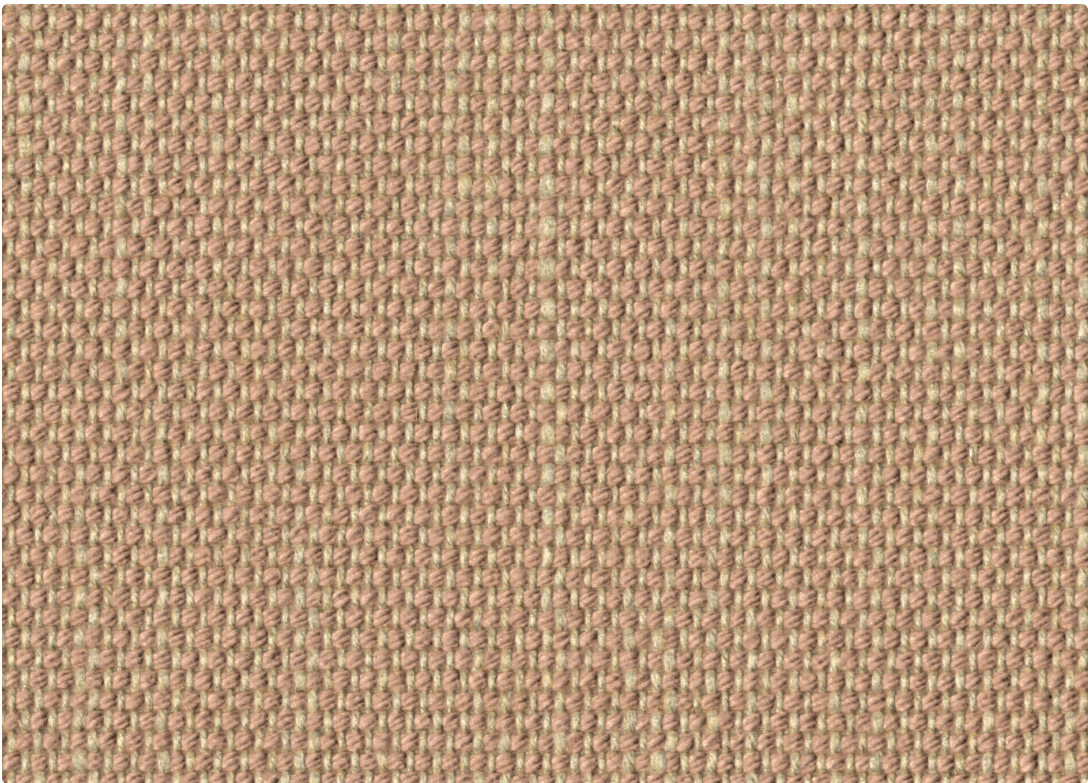
**Collection**  
Super Natural

**Use**  
Upholstery

**Content**  
62% Cotton +  
17% Polyester +  
14% Viscose +  
7% Linen

**Abrasion**  
Wyzenbeek  
100,000 double rubs

**Environmental**  
Renewable Content  
Fluorine Free Stain  
Repellent  
Heavy Metal Free  
REACH Regulation  
Compliant



Cactus Flower  
4115-07



Cotton Blossom  
4115-03



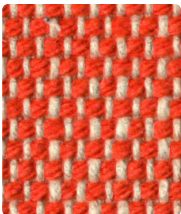
Tumbleweed  
4115-04



Lemongrass  
4115-16



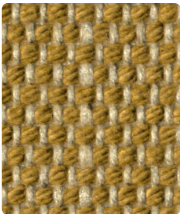
Cenote  
4115-13



Anemone  
4115-09



Silver Thyme  
4115-02



Bramble  
4115-05



Eucalyptus  
4115-15



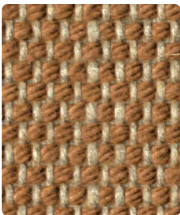
Jacaranda  
4115-12



Scarlet Sage  
4115-08



Charred Seed  
4115-01



Manzanita  
4115-06



Oleander  
4115-14



Wild Indigo  
4115-11



Crepe Myrtle  
4115-10



Name

Contrast Slub

Style No.

4115

Specification

Use: Upholstery  
Content: 62% Cotton + 17% Polyester + 14% Viscose + 7% Linen  
Weight: 32 oz per linear yard  
Width: 55"  
Pattern Repeat: None  
Directional: Yes

Finish

Fluorine Free Stain Repellent

Performance

Abrasion: ASTM D4157 Wyzenbeek 100,000 double rubs  
Breaking Strength: ASTM D5034 Warp 351.7 lbf, Fill 304.2 lbf  
Seam Slippage: ASTM D4034 Warp 28.8 lbf, Fill 64.8 lbf  
Colorfastness to Light: AATCC 16, Grade 4-5 at 40 Hours  
Colorfastness to Crocking: AATCC 8, Wet Class 3, Dry Class 4-5  
Pilling: ASTM D3511 (Brush Pill), Class 4

Flame Retardancy

Cal TB 117-2013

Maintenance

S, Clean with a dry cleaning or solvent-based cleaning agent. Do not use water-based cleaning products.

Environmental

Renewable Content  
Fluorine Free Stain Repellent  
Heavy Metal Free  
REACH Regulation Compliant

Origin

Italy

Dye lots may vary slightly from samples shown. Samples shown off the bolt.  
Wool is a natural product. Color variations are part of the natural beauty of wool and are not considered a defect.



Canada

877.705.LUUM  
luumtextiles.ca

USA

877.705.LUUM  
luumtextiles.com

International

919.464.2922  
luumtextiles.com

cdn/us/int/2023

© Luum™ 2023, all rights reserved.  
\*™ Trademarks used under license by Luum™, Contrast Slub™  
\*Certification Marks owned by the Association for Contract Textiles, Inc.  
Abrasion test results exceeding ACT Performance Guidelines are not an indicator of product lifespan.  
Multiple factors affect fabric durability and appearance retention.