

Name

Earthshine

Designer

Suzanne Tick

Style No.

1035

Collection

Kinetic Energy

Use

Wrapped Wall

Content

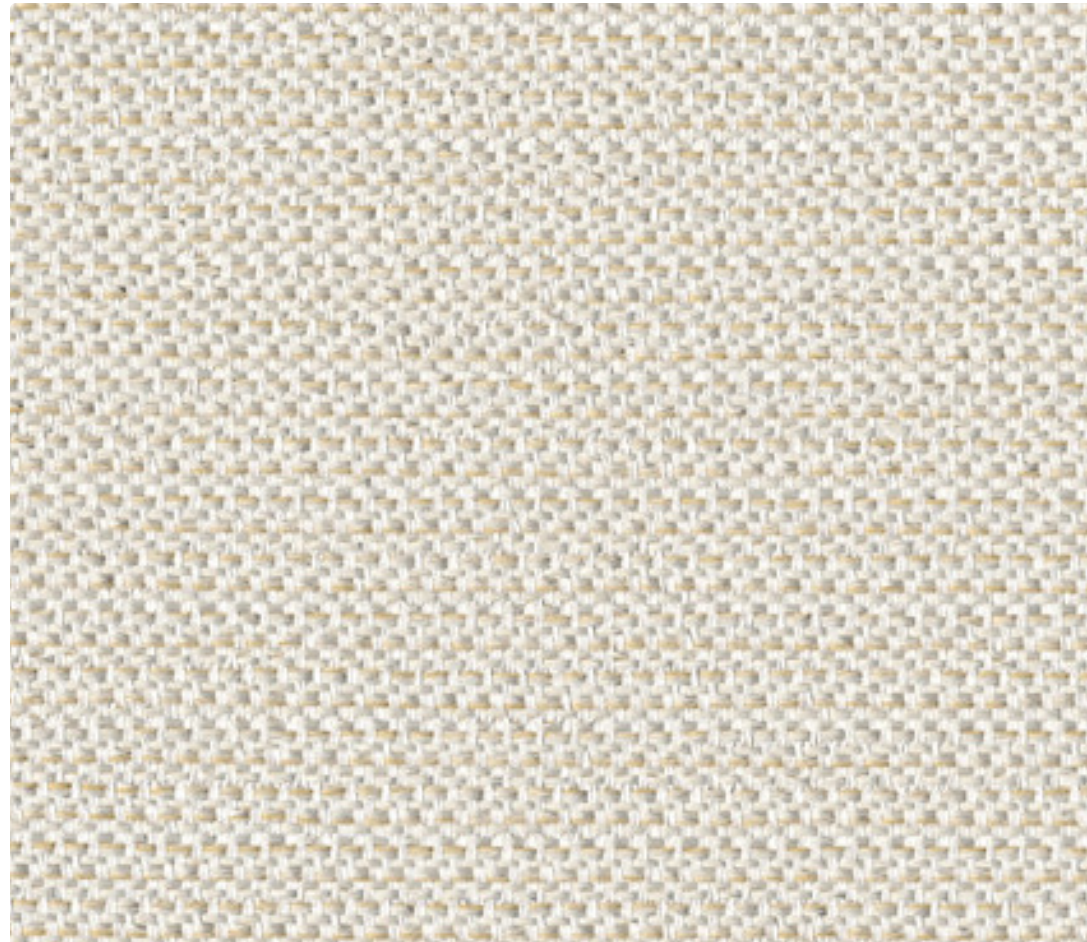
73% Polyethylene
27% Olefin

Special Characteristics

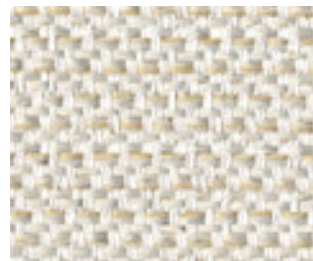
Bleach Cleanable

Environmental

Chemical Finish Free
Heavy Metal Free
Facts 3rd-party certified to
NSF/ANSI 336 Compliant
REACH Regulation
Compliant



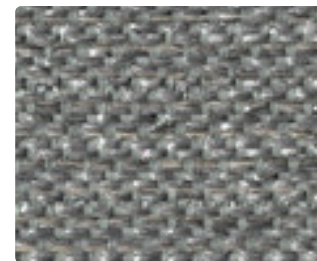
Lux 1035-02



Lux 1035-02



Scatter 1035-03



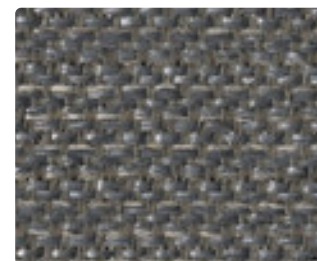
Shade 1035-05



Candlewick 1035-01



Argon Flash 1035-04



Umbra 1035-06

Name

Earthshine

Style No.

1035

Designer

Suzanne Tick

Specification

Use: Wrapped Wall
Content: 73% Polyethylene, 27% Olefin
Weight: 20.8 oz per linear yard
Width: 54"
Pattern Repeat: None
Directional: Yes

Finish

None

Performance

Breaking Strength: ASTM D5034 Warp 311 lbf, Fill 371 lbf
Colorfastness to Light: AATCC 16, Grade 5 at 40 Hours
Colorfastness to Crocking: AATCC 8, Wet Class 5, Dry Class 5

Acoustical Rating

Fabric Transparency 0.60, NRC 0.60 tested to ISO 10534-2 standards

Flame Retardancy

ASTM E84 Unadhered Class A or 1

Maintenance

WS, Clean with either a water-based or solvent-based cleaning agent.
Bleach Cleanable: 9% (10:1 Ratio), wipe with water after solution.

Environmental

Chemical Finish Free
Heavy Metal Free
Facts 3rd-party certified to NSF/ANSI 336 Compliant
REACH Regulation Compliant

Origin

USA

Dye lots may vary slightly from samples shown. Samples shown off the bolt.



Canada

877.705.LUUM
luumtextiles.ca

USA

877.705.LUUM
luumtextiles.com

International

919.464.2922
luumtextiles.com

cdn/us/int/09-24

© Luum™ 2024, all rights reserved.

*™ Trademarks used under license by Luum™, Earthshine™

*Certification Marks owned by the Association for Contract Textiles, Inc.

SC-305-1035