



STK  
2020

FOR  
ALL THE  
WAYS   
WE WORK  
TOGETHER

NEW  
4-45   
EXTENSIONS  
46-59   
PORTFOLIO  
60-63 



Christophe Pillet

2020

## REC

The industrial age meets the modern era. The Rec work table, available in three heights and designed by Christophe Pillet, leans into its utilitarian form and raw simplicity, while breaking with conventions of what an office table should be.



# HIGH LOW



# BAR-HEIGHT AND BELOW, FOR ONE OR FOR ALL

## Space-Defining

Designed for perimeter and open space planning, the table and its varying lengths can be used to augment the layout and flow of any space.

## Top and Bottom

Multiple finishes atop and a palette of powdercoating options below create opportunities for high and low contrast, to blend in or stand out.

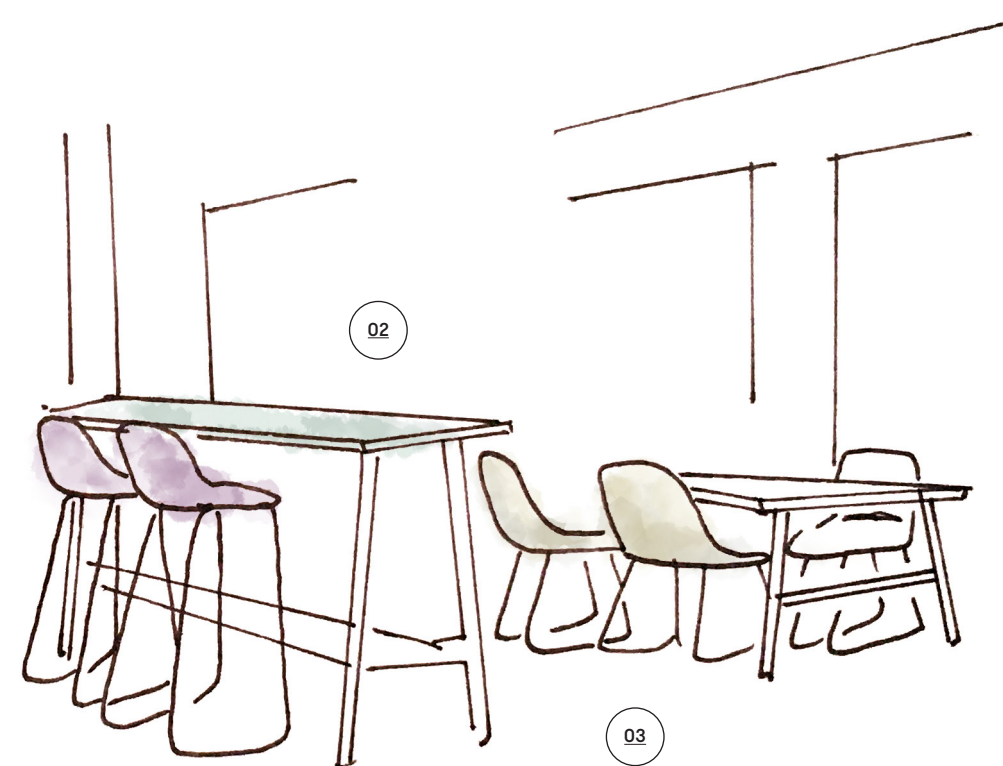
## Versatile

With three heights and multiple tabletop sizes, the collection supports working alone or together for sitting, standing or perching.



“This was an environment with a lot of hard architectural features and rather than playing into the textures of the textiles, it was aesthetically pleasing to play into the heights of the furniture.”

Kyla Glen,  
Studio TK Interior Designer



#### 01 Influences

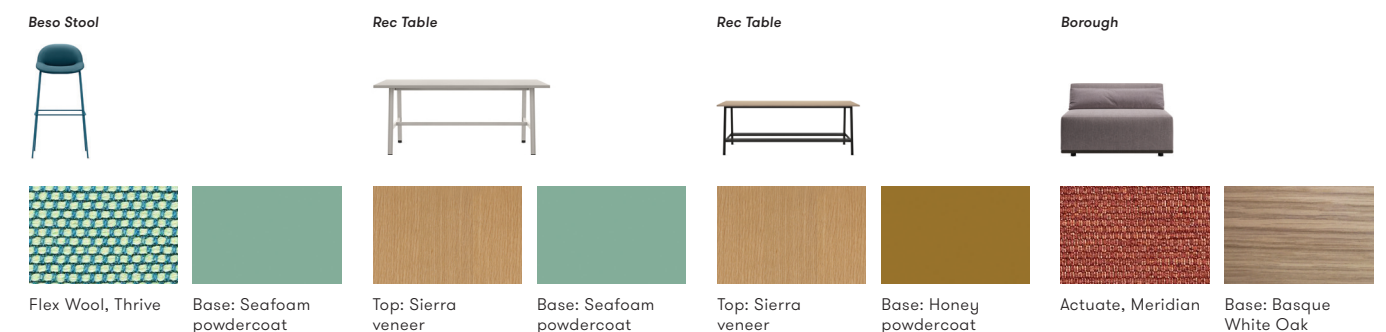
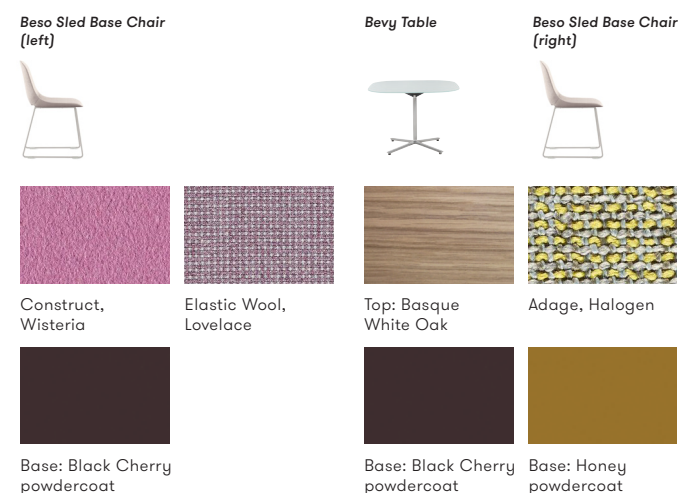
“We did a lot of research into the color trends, pulling from art, textiles, fashion, and other interiors, leading us to lean more towards those neon hues, which create an exciting environment without being too overwhelming.”

#### 02 Choice

“In this space I wanted people to be able to choose their work posture. The high work Rec tables offer a standing height quick touchdown space but can also be used to sit around and get work done.”

#### 03 Analogous Palette

“There are a lot of different colors in the space, so rather than mixing them all between the settings it was best to keep them grouped together, allowing for the variety without it getting too chaotic.”





“I like simplicity.  
I like elegance.  
I like modernity.  
Those things aren’t  
style, they’re more  
a point of view.  
I want what I make  
to be timeless.”



Christophe Pillet

**Features**

- Configurations: Rectangular tabletops in multiple sizes
- Table Heights: 29", 36", 42"
- Surface Materials: Laminate, Veneer, Linoleum
- Base Finishes: Fundamental and Fashion powdercoat colors





Vondom + Studio TK

2020

## VONDOM

Indoor optional. Our newest partnership with Spanish furniture company, Vondom, expands the Studio TK portfolio to provide a modern collection of seating and tables designed to work indoors, outdoors and everywhere in between.

# IN OUT





# LIGHTWEIGHT, YET STRONG, FOR INDOORS OR OUT

## Stackable

All seating can stack six chairs high, allowing for dynamic space planning and effortless storage.

## Durable

Light to the touch, every product is deceptively durable, able to withstand repeated use, inside and out.

## All-Weather

Each product is built to weather the elements, be it a warm sun, a cold rain, or a knocked over mug of hot coffee.





**Vondom— KES**

The two-chair series, created by designer duo Gabriele + Oscar Buratti, maintains its subtle sophistication as it transitions from open space to open air environments.

**Features**

Configurations:  
Armless Chair, Armchair

Finishes: Black, White, Ecu

Injected Polypropylene  
for Indoor/Outdoor Use

Stacks 6 high



**Vondom— MARI-SOL**

Versatile enough to work in any environment or pair with any Vondom or Studio TK chair, Eugeni Quitllett's work and occasional table collection makes the understated feel sublime.

**Features**

Configurations: Occasional, Work, Bar Height

Top Surface Materials: Ebony and White Solid Core Laminate

Base Finishes: Ebony and White powdercoat colors



**Vondom— AFRICA**

Comprised of three chairs, the Eugeni Quitllett-designed collection reflects a return to simplicity and an embrace of natural forms.

**Features**

Configurations: Armless Chair, Armchair, Bar Stool

Finishes: Black, White, Ecu

Injected Polypropylene  
for Indoor/Outdoor Use

Stacks 6 high

**Vondom— DELTA**

Designed by Jorge Pensi, the Delta chair evokes a timelessness, blending the real with the surreal, and striking a balance between structured lines and negative space.

**Features**

Configuration: Armchair

Finishes: Black, White, Ecu

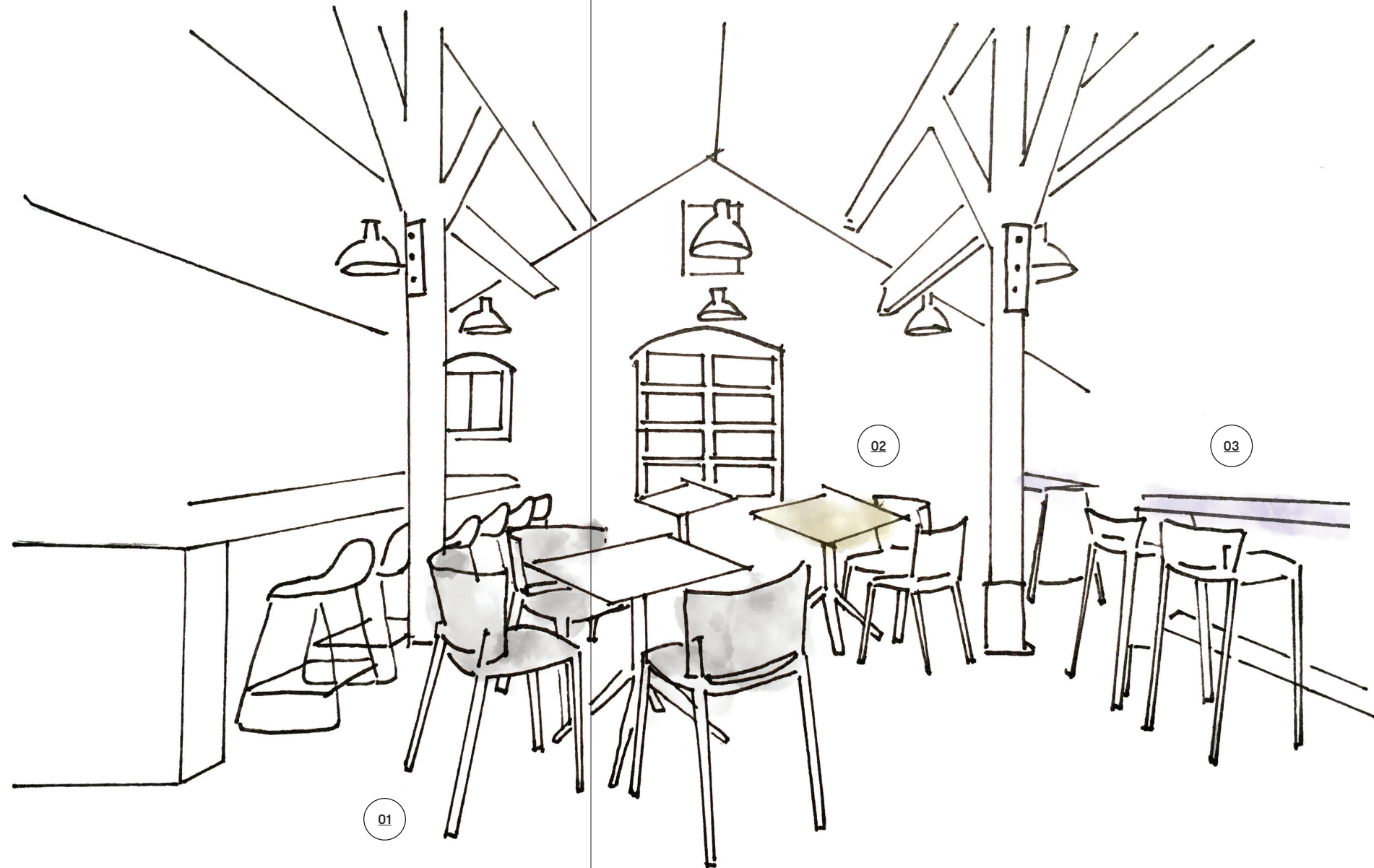
Injected Polypropylene for Indoor/Outdoor Use

Stacks 6 high



“When designing a café space, it helps me to think of it more holistically. Rather than just imagining the space as somewhere people will go to eat, I try to imagine it as a respite from their desks.”

Kyla Glen,  
Studio TK Interior Designer



#### 01 Food

“Whenever food is involved, I need things to be durable. These plastic chairs provided the perfect way to keep the dining space clean.”

#### 02 Dynamic

“By using chairs with a light-weight design, I wanted to give people the ability to create a dynamic space where a group of people could easily push together tables and reconfigure the chairs to meet their dining or gathering needs.”

#### 03 Flow

“We wanted to play with different table heights to break up the room, allowing your eyes to flow through the space, while creating a clear pathway to enter and exit.”

Africa Armless Chair



White plastic

Mari-Sol Work Table



Top: White solid core laminate

Base: Ebony powdercoat

Beso Stool



Digi Tweed, Obsidian Tweed

Base: Ebony powdercoat

Rec Table



Top: Very White laminate

Base: Ebony powdercoat

Africa Stool



White plastic



Artifort + Studio TK

2020

## JIMA

Sensible meets the sophisticated. From our Artifort partnership, Jima, designed by Patrick Nourget, provides elevated comfort for long conference room meetings and a casual elegance for open floor environments.



# SIT STAY



# CLEAN LINES AND COMFORT, FOR MIND AND BODY

## "Kalm"-ing

Jima draws its design language from our lounge chair, Kalm, also offered through our Artifort partnership.

## Crafted

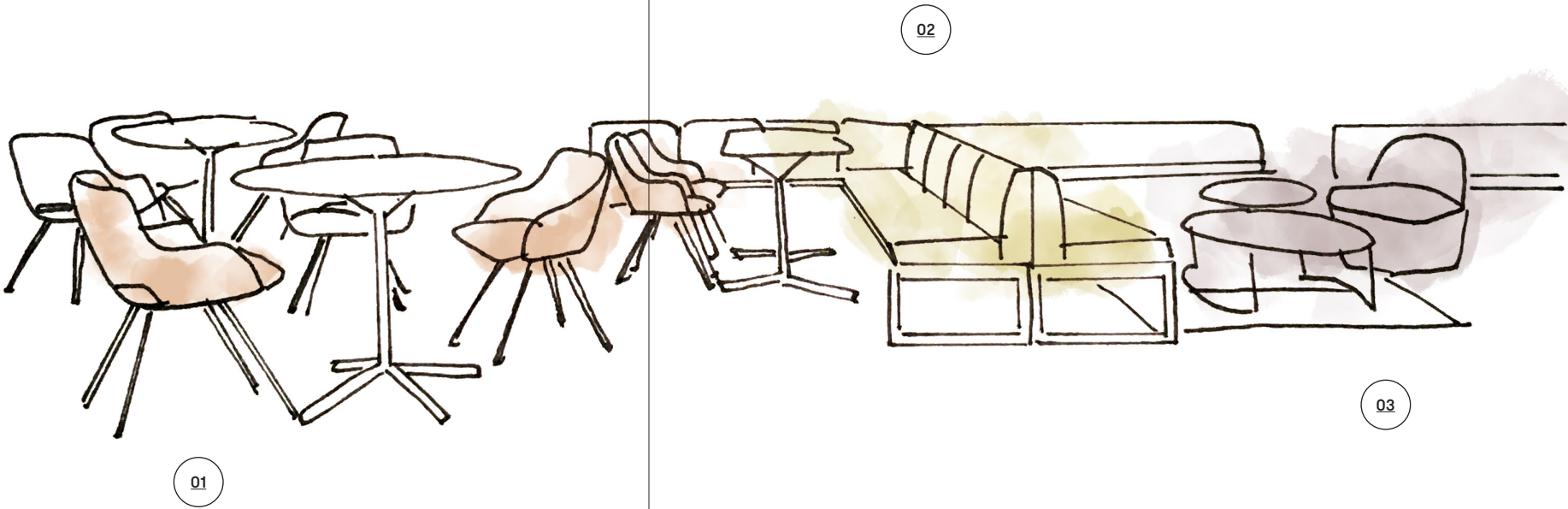
The back of the chair wraps the body, culminating in an integrated armrest, while a cutout allows for improved airflow and breathability.





“When working with such a large space, I like to start with the largest piece of furniture we have to help delineate and create a mixture of lounge and dining settings.”

Kyla Glen,  
Studio TK Interior Designer



01 Color

“While Jima offers many different base style and back height combinations, it was fun to see how applying color to one of the more traditional versions of the chair could help mix up the space.”

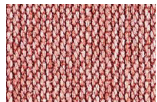
02 Options

“The bench seating provided great foundational structure for back-to-back seating, allowing us to create different settings with a variety of posture options.”

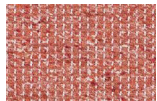
03 Culture Hub

“When creating this space, we wanted it to be multifunctional allowing large groups to sit in on a presentation or small groups to congregate.”

Jima Chair



Percept, Pulse



Homage, Sanguine



Actuate, Prelude



Base: Black Cherry powdercoat

Bevy Table



Top: Black Cherry backpainted glass



Base: Black Cherry powdercoat

Clique Bench



Adage, Photon



Base: Honey powdercoat

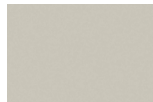


Table top surface: Sand laminate

Sly Table

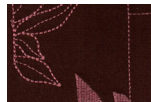


Top: Basque White Oak veneer



Base: Black Cherry powdercoat

Cesto with Back



Seat and back upholstery: Second Nature, Nightshade



Base upholstery: Adage, Quartzite

Cesto Pouf



Seat upholstery: Construct, Zinnia



Base upholstery: Adage, Quartzite

“Today, good design is a blend of innovation, creativity and singularity. To be a designer is to think. To think about something new and something interesting.”



Patrick Nourget



#### **Features**

Configurations:  
Mid or High Back Armchair

Base Styles:  
5-star task with casters  
4-star swivel, 4-leg

Base Finishes:  
5-star task / polished aluminum  
4-star swivel / polished aluminum  
or Fundamental and Fashion  
powdercoat colors  
4-Leg / chrome or Fundamental  
and Fashion powdercoat colors





Studio TK

2020

## SLY

Perception meets reality. Representing Studio TK's first in-house design, Sly is a series of occasional tables that plays an illusory trick on the eyes. Creating the appearance of an angled surface, the top inset lies perfectly flat within its metal base.

# FLAT FLUSH



## SURREAL AND SOPHISTICATED, FOR EVERY OCCASION

### Nested

The three sizes of Sly allow the tables to nest and overlap to create a stair-step of table-top surfaces.

### Balanced

The optical play of the top and base resolves itself to strike the perfect balance of proportion and form, with a dash of whimsy.



“I wanted to play off the architecture and symmetry of the space. Using four chairs helped us create the balance we were looking for, while the soft materials provided a nice contrast to the ruggedness of the space.”

Kyla Glen,  
Studio TK Interior Designer



#### 01 Natural Light

“In person this space is much smaller than it appears. I wanted to harness the natural light to not only brighten the space, but to make it seem larger than it really is.”

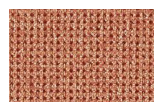
#### 02 Grounding

“While the rug is a neutral piece of the puzzle, so as not to take attention away from the furniture, it’s a great element that allowed us to soften the space made up of mostly hard surfaces.”

#### 03 Palettes

“On the chairs, we went with a classic neutral feel to play off the natural light, while using dark colors in the table’s glass and powdercoating to reflect the space’s architectural features.”

Beso Lounge Chair



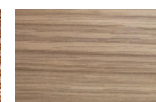
Doyenne,  
Copperplate



Base: Basque  
White Oak

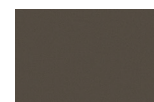


Actuate,  
Mordant



Base: Basque  
White Oak

Sly Table



Top: Gilded Ash  
backpainted glass



Base: Ebony  
powdercoat



“We wanted to find a way to extend utility into the illusionary, using the contrast of the top and inset to create a happy tension that naturally resolves itself.”



Studio TK Factory



#### Features

Configurations: three sizes of occasional table

Table Heights: differ per size for ease of nesting

Surface Finishes: Laminate, Veneer, Linoleum, Backpainted glass

Base Finishes: Fundamental and Fashion powdercoat colors





# EX- TENSIONS



Busk + Hertzog

2020

# HAVN TABLES

A match made in Havn. Building off the success of Busk+Hertzog’s lounge series, the collection extends its reach into occasional and coffee tables. Each table carries Havn’s design language to make the perfect pairing, while offering multiple configurations to accommodate other products, spaces and interior concepts.



Considered

Havn Tables are quietly subtle and yet keenly crafted with an attention to detail.

Havn Seating



Rounded

A variety of table top sizes, configurations and finishes create endless combinations.

Havn Occasional





“In this setting, my goal was to show how you are able to achieve that soft residential feel without sacrificing the quality of the furniture.”

Kyla Glen,  
Studio TK Interior Designer



#### 01 Residential Posture

“This lounge posture of both the sofa and the chair mimic what you would find in someone’s living room, whether they are working from home full time or just checking some emails in their living room while catching up on their favorite TV program.”

#### 02 Propping

“I usually lean towards very minimal accessories, items with clean lines that won’t take away from the space. In this particular setting, I wanted it to feel much more lived in and relatable.”

#### 03 Comfort

“This was a great space to play with different textures and patterns. The choice of soft leather and nubby textiles helped to make the space feel more comforting and inviting rather than your usual solid color commercial textile.”

Havn Table



Top: Sierra veneer

Base: Sierra

Havn Lounge



Macrotweed,  
Watershed

Base: Sierra

AC Lounge



Upholstery: COM

Mario Ruiz

2020

BEVY  
TABLES

Our most versatile table grows stronger. The Mario Ruiz-designed Bevy Table collection now includes new height options for Y-leg pedestal tables, two large conference leg tables, and an additional round tabletop option, all with the ability to customize the entire collection with our back-painted glass color.



New Heights

Bevy allows designers to use different heights and configurations to affect the way people work and move through space.

Bevy Leg

Glass Colors



Bevy Leg

Bevy Occasional

Bevy Pedestal



Mario Ruiz

2020

CLIQUE

An extension without the cord. As part of our perimeter benching and open floor seating solution, Clique, designed by Mario Ruiz, now offers an integrated table top configuration as well as direct-access power.



Integrated

Optional power sits right below the seat for convenient, hassle-free access.

Clique



Topped Off

The table top fits within the Clique architecture, creating a continuous line from seat to surface.

Clique w/ table



Artifort + Studio TK

2020

## BESO

It's all about that base. Our newest addition to the Beso family, designed by Khodi Feiz, introduces a sled base and additional configurations of our 4-star wire base to create the perfect balance of versatility and elegance.



### Paired Up

The sled base is designed to work with all three versions of Beso, while maintaining each chair's intended sitting angle.

#### Beso



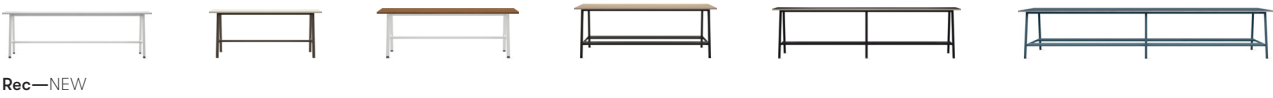
PORTFOLIO

Seating



# PORTFOLIO

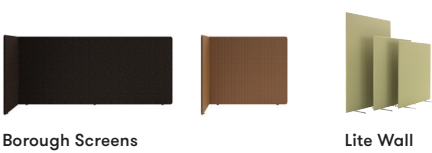
## Tables



## Casegoods



## Screens



APPENDIX

Photography

REC

Pg 4–5  
Rec Table  
Top finish: Sierra veneer  
Base finish: Honey powdercoat

Pg 6  
Rec Table & Beso Chairs  
Table top: Sierra veneer  
Table base: Honey powdercoat  
Chair upholstery: Adage, Halogen  
Chair base: Honey powdercoat

Pg 7  
Rec Tables  
(left table)  
Top finish: Very White laminate  
Base finish: Chili powdercoat  
(middle table)  
Top: Pistachio linoleum  
Base: Seafoam powdercoat  
(right table)  
Top: Basque White Oak veneer  
Base: Gilded Ash powdercoat

Pg 8–9  
Bevy Tables  
Top: Basque White Oak  
Base: Black Cherry powdercoat  
Beso Sled Base Chairs (left)  
Upholstery: Construct, Wisteria and Elastic Wool, Lovelace  
Base: Black Cherry powdercoat  
Rec Table  
Top: Sierra veneer  
Base: Seafoam powdercoat  
Beso Stools  
Upholstery: Flex Wool, Thrive  
Base: Seafoam powdercoat  
Rec Table (29" H)  
Top: Sierra Veneer  
Base: Honey powdercoat  
Beso Sled Base Chairs (right)  
Upholstery: Adage Halogen  
Base: Honey powdercoat  
Borough (in back)  
Upholstery: Actuate, Meridian  
Base: Basque White Oak

Pg 12  
Rec Table  
Top: Pebble linoleum  
Base: Very White powdercoat

Pg 13  
Rec Table  
Top: Sierra veneer  
Base: Honey powdercoat

VONDOM

Pg 14–15  
Africa Armless (left) Ecru plastic  
Africa Stool (middle) Black plastic  
Africa Armchair (right) White plastic

Pg 16  
Africa Armless Chair White plastic  
Kes Armless Chair Ecru plastic  
Africa Stool White plastic  
Delta Chair Black plastic

Pg 17 (from left to right)  
Mari-Sol Work Table (left)  
Top: Black solid core laminate  
Base: Ebony powdercoat  
Mari-Sol Occasional Table  
Top: White solid core laminate  
Base: Ebony powdercoat

VONDOM (cont'd)

Pg 17  
Mari-Sol Café Table  
Top: White solid core laminate  
Base: Very White powdercoat  
Mari-Sol Occasional Table (right)  
Top: Black solid core laminate  
Base: Very White powdercoat

Pg 18–19  
Mari-Sol Work Tables  
Top: Black solid core laminate  
Base: Ebony powdercoat  
Kes Armless Chairs White plastic

Pg 20–21  
Africa Stools White plastic  
Kes Chairs Ecru plastic  
Mari-Sol Table  
Top: White solid core laminate  
Ebony powdercoat  
Delta Chair Black plastic

Pg 22–23  
Beso Stools  
Upholstery: Digi Tweed, Obsidian Tweed  
Base: Ebony powdercoat  
Mari-Sol Work Tables  
Top: White solid core laminate  
Base: Ebony powdercoat  
Africa Armless Chairs White plastic  
Africa Stool White plastic  
Rec Tables  
Top: Very White laminate  
Base: Ebony powdercoat

JIMA

Pg 26–27  
Bevy Leg Table  
Top: Truffle veneer  
Castings: Ebony powdercoat  
Legs: Truffle Oak  
Jima Chairs  
Upholstery: Macrotweed, Goldstone  
Base: Polished Aluminum

Pg 28  
Jima Chair  
Upholstery: Percept, Pulse  
Base: Black Cherry powdercoat

Pg 29  
Jima Chair  
Upholstery: Actuate, Prelude  
Base: Black Cherry powdercoat

Pg 30–31  
Jima Chairs  
Upholsteries: Percept, Pulse  
Actuate, Prelude  
Homage, Sanguine  
Base: Black Cherry powdercoat  
Bevy Tables  
Top: Black Cherry backpainted glass  
Base: Black Cherry powdercoat  
Clique Bench  
Upholstery: Adage, Photon  
Base: Honey powdercoat  
Table top surface: Sand laminate  
Sly Tables  
Top: Basque White Oak veneer  
Base: Black Cherry powdercoat  
Cesto with Back  
Seat and back upholstery: Second Nature, Nightshade  
Base upholstery: Adage, Quartzite

JIMA (cont'd)

Pg 30–31  
Cesto Pouf  
Seat upholstery: Construct, Zinnia  
Base upholstery: Adage, Quartzite

Pg 34  
Jima Chair  
Upholstery: Macrotweed, Goldstone  
Base: Polished Aluminum

Pg 35  
Jima Chair Upholstery: Percept, Pulse

SLY

Pg 36–37  
Sly Table  
Top: Ocean backpainted glass  
Base: Ocean powdercoat  
Sly Table  
Top: Chili backpainted glass  
Base: Chili powdercoat  
Sly Table  
Top: Basque White Oak veneer  
Base: Sand powdercoat  
Sly Table  
Top: Pistachio linoleum  
Base: Hunter powdercoat

Pg 38  
Sly Table (left)  
Base: Hunter powdercoat  
Top: Basque White Oak veneer  
Sly Table (middle)  
Top: Basque White Oak  
Base: Honey powdercoat  
Sly Table (right)  
Top: Basque White Oak veneer  
Base: Seafoam powdercoat  
Kalm Lounge Chair  
Upholstery: Homage, Pinnacle  
Base: Basque White Oak

Pg 40–41  
Beso Lounge Chair  
Upholstery: Doyenne, Copperplate  
Base: Basque White Oak  
Beso Lounge Chair  
Upholstery: Actuate, Mordant  
Base: Basque White Oak  
Sly Tables  
Top: Gilded Ash backpainted glass  
Base: Ebony powdercoat

Pg 44  
Sly Table (top left)  
Top: Burgundy linoleum  
Base: Black Cherry powdercoat  
Kalm Chairs (bottom right)  
Upholstery: Homage, Pinnacle  
Base: Basque White Oak  
Sly Tables  
Top: Basque White Oak veneer  
Base: Seafoam, Hunter and Honey powdercoat

Pg 45  
Sly Table  
Top: Gilded Ash backpainted glass  
Base: Ebony powdercoat  
Sly Table  
Top: Burgundy linoleum  
Base: Black Cherry powdercoat  
Sly Table  
Top: Basque White Oak veneer  
Base: Honey powdercoat

HAVN

Pg 46–47  
Havn Table  
Top: Basque White Oak veneer  
Base: Basque White Oak  
Havn Table  
Top: Truffle veneer  
Base: Truffle Oak  
Havn Table  
Top: Basque White Oak veneer  
Base: Basque White Oak  
Havn Table  
Top: Truffle veneer  
Base: Truffle oak

Pg 48  
Havn Tables  
Basque White Oak  
Sierra  
Truffle

Pg 49  
Havn Lounge Chair  
Upholstery: Macrotweed, Watershed  
Base: Sierra Oak  
Havn Table  
Top: Sierra veneer  
Base: Sierra Oak

Pg 50–51  
Havn Tables  
Top: Sierra veneer  
Base: Sierra  
AC Lounge  
Upholstery: COM  
Havn Lounge  
Upholstery: Macrotweed, Watershed  
Base: Sierra

BEVY

Pg 54–55  
Clique Bench  
Upholstery: Homage, Sanguine  
Bevy Tables  
Top: Basque White Oak veneer  
Base: Ebony powdercoat  
Beso Stools  
Upholstery: Superspun, Treadle  
Base: Ebony powdercoat

CLIQUE

Pg 56–57  
Clique Bench  
Upholstery: Adage, Photon  
Top: Sand laminate  
Base: Honey powdercoat

BESO

Pg 58–59  
Beso Lounge  
Upholstery: Homage, Sanguine  
Upholstery: Oeuvre, Finesse  
Upholstery: Actuate, Conscious  
Base: Gilded Ash powdercoat  
Freehand Table  
Top: Gold backpainted glass  
Base: Gold lacquer  
Freehand Table  
Top: Nickel backpainted glass  
Base: Nickel lacquer

